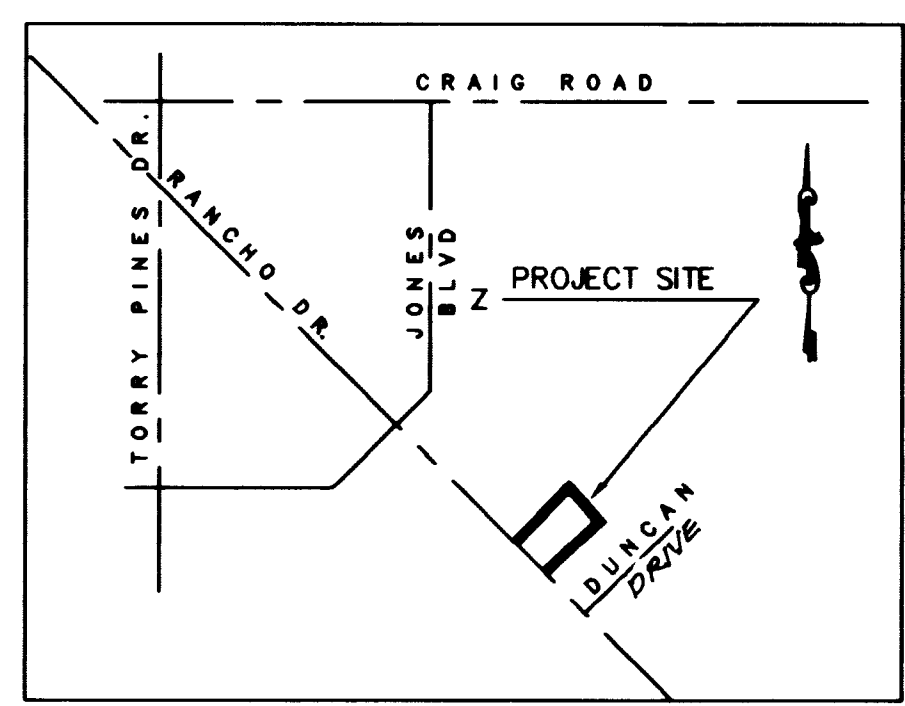
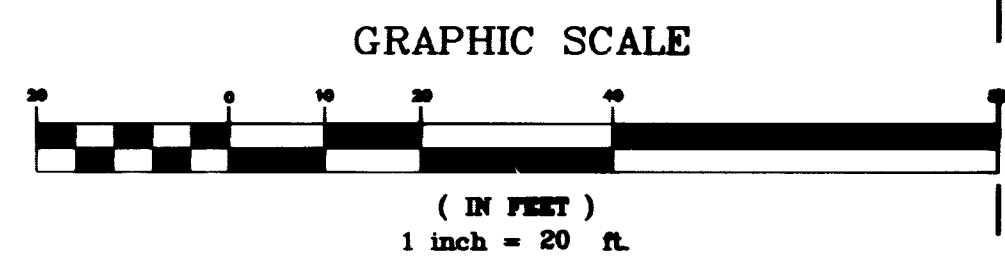
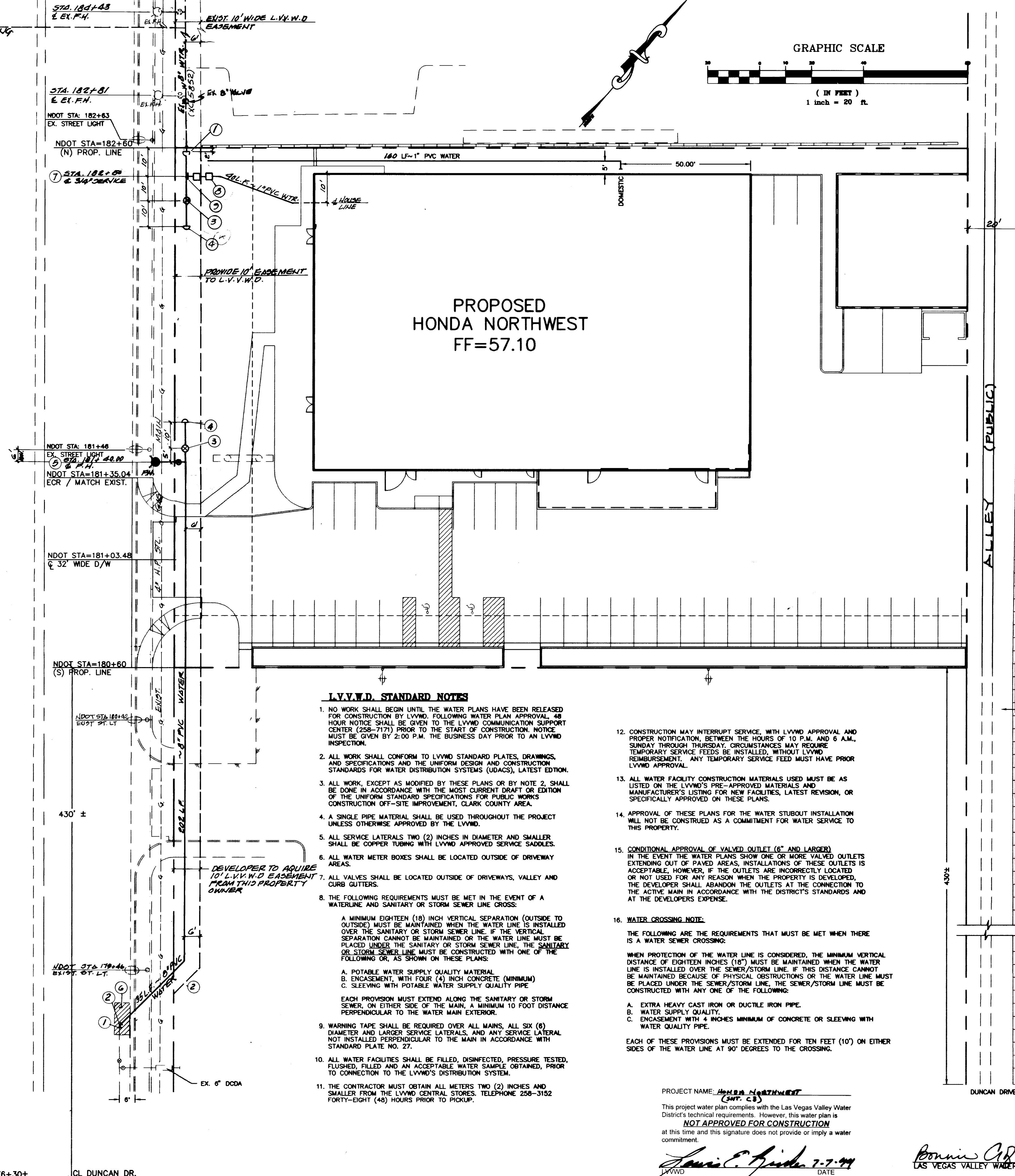


RANCHO DRIVE (U.S. HIGHWAY 95)



BASIS OF BEARING
BEING THE CENTERLINE OF US HIGHWAY 95 (RANCHO DRIVE)
N 30°28'00" W

BENCHMARK
#7C0012NES. RIVET & PLATE IN TOP OF HEADWALL NORTH SIDE OF RANCHO ROAD AT JONES BOULEVARD ELEV. 2263.076 FT OR 690.5204 METERS PER CURRENT CLV DATUM (NAVD 89)

LAS VEGAS FIRE DEPARTMENT
FIRE FLOW IS 3000 GPM AT 20 PSI RESIDUAL PRESSURE

BASED ON:
 SQUARE FOOTAGE: 19038 SF
 AREA BETWEEN 4-HR AREA SEPARATION WALLS:
 BUILDING HEIGHT: 28' MAX.
 NUMBER OF STOREYS: 1
 OCCUPANCY: I-N
 FULL AUTOMATIC FIRE SYSTEM: NO

NOTES:

REDUCED PRESSURE PRINCIPLE ASSEMBLY 1" - 3/4"
 APPROVED REDUCED PRESSURE PRINCIPLE ASSEMBLY(S) SHALL BE INSTALLED PER THE UDACS PLATE NO. 11A. NO WATER SHALL BE TAKEN FROM A SERVICE REQUIRING BACKFLOW PREVENTION UNTIL THE REDUCED PRESSURE PRINCIPLE ASSEMBLY HAS BEEN SUCCESSFULLY TESTED BY THE L.V.V.W.D.

ANY BLOCK WALL OR OTHER FENCE SHALL BE DESIGNED AND CONSTRUCTED AROUND THE OUTSIDE OF THE EASEMENT(S), SO AS TO ALLOW THE DISTRICT DIRECT ACCESS FROM THE ADJACENT RIGHT-OF-WAY.

QUANTITIES:

	PUBLIC	PRIVATE
EX. 20' WIDE PUBLIC, FULLY IMPROVED ALLEY	0 LF	40' L.F.
1" PVC WATER	1 BA	
F.H. ASSEMBLY	2 EA	
8" GATE VALVE	2 EA	
8" WATER MAIN	280 L.F.	
8" 45° ELL	2 EA	
3/4" METER	1 EA	
3/4" RPPA	1 EA	

CONSTRUCTION NOTES:

- REMOVE CAP, MAKE CONNECTION TO EX. 8" WATER
- 8" 45° ELL
- 8" GATE VALVE
- 8" CAP
- F.H. ASSEMBLY PER UDS PLATE NO. 7.
- 6" x 12" REMOVE AND REPLACE A.C. AND BASE, A.C. AND BASE TO MATCH EXIST.
- 3/4" SERVICE & METER PER UDS PLATE NO. 10
- 3/4" RPPA PER UDS PLATE NO. 11A.
- 8" x 1" SERVICE SADDLE, 1" CORR STOP AND 1" TYPE "K" COPPER LATERAL PER UDACS PLATE 1-3

[Signature] 5/11/99
CITY FIRE MARSHAL DATE

NOTES:

- ALL EXISTING UTILITY STRUCTURES WITH IN CONSTRUCTION AREA SHALL BE ADJUSTED TO MATCH FINISH GRADE (I.E. W. BOX, W.M., ANNOCE BOX, F.H., TEL. BOX, ETC.)
- ALL DIMENSIONS TO UTILITIES ARE TO THE CENTERLINE OF PIPE UNLESS INDICATED OTHERWISE
- CONTRACTOR SHALL VERIFY HORIZONTAL AND VERTICAL ALIGNMENT OF EXISTING UTILITIES AND NOTIFY THE DESIGN ENGINEER IMMEDIATELY ON ANY DISCREPANCIES PRIOR TO CONSTRUCTION

L.V.V.W.D. STANDARD NOTES

- NO WORK SHALL BEGIN UNTIL THE WATER PLANS HAVE BEEN RELEASED FOR CONSTRUCTION BY LVVWD. FOLLOWING WATER PLAN APPROVAL, 48 HOUR NOTICE SHALL BE GIVEN TO THE LVVWD COMMUNICATION SUPPORT CENTER (258-7171) PRIOR TO THE START OF CONSTRUCTION. NOTICE MUST BE GIVEN BY 2:00 P.M. THE BUSINESS DAY PRIOR TO AN LVVWD INSPECTION.
- ALL WORK SHALL CONFORM TO LVVWD STANDARD PLATES, DRAWINGS, AND SPECIFICATIONS AND THE UNIFORM DESIGN AND CONSTRUCTION STANDARDS FOR WATER DISTRIBUTION SYSTEMS (UDACS), LATEST EDITION.
- ALL WORK, EXCEPT AS MODIFIED BY THESE PLANS OR BY NOTE 2, SHALL BE DONE IN ACCORDANCE WITH THE MOST CURRENT DRAFT OR EDITION OF THE UNIFORM STANDARD SPECIFICATIONS FOR PUBLIC WORKS CONSTRUCTION OFF-SITE IMPROVEMENT, CLARK COUNTY AREA.
- A SINGLE PIPE MATERIAL SHALL BE USED THROUGHOUT THE PROJECT UNLESS OTHERWISE APPROVED BY THE LVVWD.
- ALL SERVICE LATERALS TWO (2) INCHES IN DIAMETER AND SMALLER SHALL BE COPPER TUBING WITH LVVWD APPROVED SERVICE SADDLES.
- ALL WATER METER BOXES SHALL BE LOCATED OUTSIDE OF DRIVEWAY AREAS.
- ALL VALVES SHALL BE LOCATED OUTSIDE OF DRIVEWAYS, VALLEY AND CURB GUTTERS.
- THE FOLLOWING REQUIREMENTS MUST BE MET IN THE EVENT OF A WATERLINE AND SANITARY OR STORM SEWER LINE CROSS:
 - A. A MINIMUM EIGHTEEN (18) INCH VERTICAL SEPARATION (OUTSIDE TO OUTSIDE) MUST BE MAINTAINED WHEN THE WATER LINE IS INSTALLED OVER THE SANITARY OR STORM SEWER LINE. IF THE VERTICAL SEPARATION CANNOT BE MAINTAINED OR THE WATER LINE MUST BE PLACED UNDER THE SANITARY OR STORM SEWER LINE, THE SANITARY OR STORM SEWER LINE MUST BE CONSTRUCTED WITH ONE OF THE FOLLOWING OR, AS SHOWN ON THESE PLANS:
 - A. POTABLE WATER SUPPLY QUALITY MATERIAL
 - B. ENCASMENT, WITH FOUR (4) INCH CONCRETE (MINIMUM)
 - C. SLEEVING WITH POTABLE WATER SUPPLY QUALITY PIPE
 EACH PROVISION MUST EXTEND ALONG THE SANITARY OR STORM SEWER, ON EITHER SIDE OF THE MAIN, A MINIMUM 10 FOOT DISTANCE PERPENDICULAR TO THE WATER MAIN EXTERIOR.
 - 9. WARNING TAPE SHALL BE REQUIRED OVER ALL MAINS, ALL SIX (6) DIAMETER AND LARGER SERVICE LATERALS, AND ANY SERVICE LATERAL NOT INSTALLED PERPENDICULAR TO THE MAIN IN ACCORDANCE WITH STANDARD PLATE NO. 27.
 - 10. ALL WATER FACILITIES SHALL BE FILLED, DISINFECTED, PRESSURE TESTED, FLUSHED, FILLED AND AN ACCEPTABLE WATER SAMPLE OBTAINED, PRIOR TO CONNECTION TO THE LVVWD'S DISTRIBUTION SYSTEM.
 - 11. THE CONTRACTOR MUST OBTAIN ALL METERS TWO (2) INCHES AND SMALLER FROM THE LVVWD CENTRAL STORES. TELEPHONE 258-3152 FORTY-EIGHT (48) HOURS PRIOR TO PICKUP.
- CONSTRUCTION MAY INTERRUPT SERVICE, WITH LVVWD APPROVAL AND PROPER NOTIFICATION, BETWEEN THE HOURS OF 10 P.M. AND 6 A.M., SUNDAY THROUGH THURSDAY. CIRCUMSTANCES MAY REQUIRE TEMPORARY SERVICE FEEDS BE INSTALLED, WITHOUT LVVWD REIMBURSEMENT. ANY TEMPORARY SERVICE FEED MUST HAVE PRIOR LVVWD APPROVAL.
- ALL WATER FACILITY CONSTRUCTION MATERIALS USED MUST BE AS LISTED ON THE LVVWD'S PRE-APPROVED MATERIALS AND MANUFACTURER'S LISTING FOR NEW FACILITIES, LATEST REVISION, OR SPECIFICALLY APPROVED ON THESE PLANS.
- APPROVAL OF THESE PLANS FOR THE WATER STUBOUT INSTALLATION WILL NOT BE CONSTRUED AS A COMMITMENT FOR WATER SERVICE TO THIS PROPERTY.
- CONDITIONAL APPROVAL OF VALVED OUTLET (6" AND LARGER) IN THE EVENT THE WATER PLANS SHOW ONE OR MORE VALVED OUTLETS EXTENDING OUT OF PAVED AREAS, INSTALLATIONS OF THESE OUTLETS IS ACCEPTABLE, HOWEVER, IF THE OUTLETS ARE INCORRECTLY LOCATED OR NOT USED FOR ANY REASON WHEN THE PROPERTY IS DEVELOPED, THE DEVELOPER SHALL ABANDON THE OUTLETS AT THE CONNECTION TO THE ACTIVE MAIN IN ACCORDANCE WITH THE DISTRICT'S STANDARDS AND AT THE DEVELOPER'S EXPENSE.
- WATER CROSSING NOTE:**

THE FOLLOWING ARE THE REQUIREMENTS THAT MUST BE MET WHEN THERE IS A WATER SEWER CROSSING:

WHEN PROTECTION OF THE WATER LINE IS CONSIDERED, THE MINIMUM VERTICAL DISTANCE OF EIGHTEEN INCHES (18") MUST BE MAINTAINED WHEN THE WATER LINE IS INSTALLED OVER THE SEWER/STORM LINE. IF THIS DISTANCE CANNOT BE MAINTAINED BECAUSE OF PHYSICAL OBSTRUCTIONS OR THE WATER LINE MUST BE PLACED UNDER THE SEWER/STORM LINE, THE SEWER/STORM LINE MUST BE CONSTRUCTED WITH ANY ONE OF THE FOLLOWING:

 - A. EXTRA HEAVY CAST IRON OR DUCTILE IRON PIPE.
 - B. WATER SUPPLY QUALITY.
 - C. ENCASMENT WITH 4 INCHES MINIMUM OF CONCRETE OR SLEEVING WITH WATER QUALITY PIPE.

EACH OF THESE PROVISIONS MUST BE EXTENDED FOR TEN FEET (10') ON EITHER SIDES OF THE WATER LINE AT 90° DEGREES TO THE CROSSING.

DEVELOPER TO ACQUIRE 10' L.V.V.W.D. EASEMENT FROM THIS PROPERTY OWNER

PROJECT NAME: HONDA NORTHWEST
(SHT. C3)

This project water plan complies with the Las Vegas Valley Water District's technical requirements. However, this water plan is **NOT APPROVED FOR CONSTRUCTION** at this time and this signature does not provide or imply a water commitment.

[Signature] 7-7-99
LVVWD DATE

[Signature]
LAS VEGAS VALLEY WATER DISTRICT

8-04-99
DATE

RANCHO DR NDOT STA=176+30±
CL DUNCAN DR.
STA=10+00 DUNCAN DR.

<p>DOLE & MARGE BOWREN 3800 NORTH RANCHO LAS VEGAS, NEVADA (702) 656-1955</p>	<p>AGRA Infrastructure, Inc. ENGINEERING GLOBAL SOLUTIONS 3016 W. LAS VEGAS, NEVADA 89102 PHONE: (702) 878-3817</p>	REV. DATE	BY
		REV. DATE	BY
<p>WATER PLAN</p>		<p>HONDA NORTHWEST SVC RANCHO & DUNCAN APN 138-012-110-013 CITY OF LAS VEGAS</p>	
<p>DRAWN BY: STAFF 3/10/99</p>	<p>DESIGNED BY: STAFF 3/10/99</p>	<p>CHECKED BY: KRE 3/10/99</p>	<p>PROJECT NO.: 02-1998-082 SCALE: 1" = 20'</p>
<p>Call before you Dig. It's a Law. 1-800-227-2600</p> <p>CALL BEFORE YOU DO OVERHEAD</p> <p>CALL 1-702-593-6111</p>		<p>C3 3 OF 7 SHEETS DRAWING NO. 107-V3120</p>	

