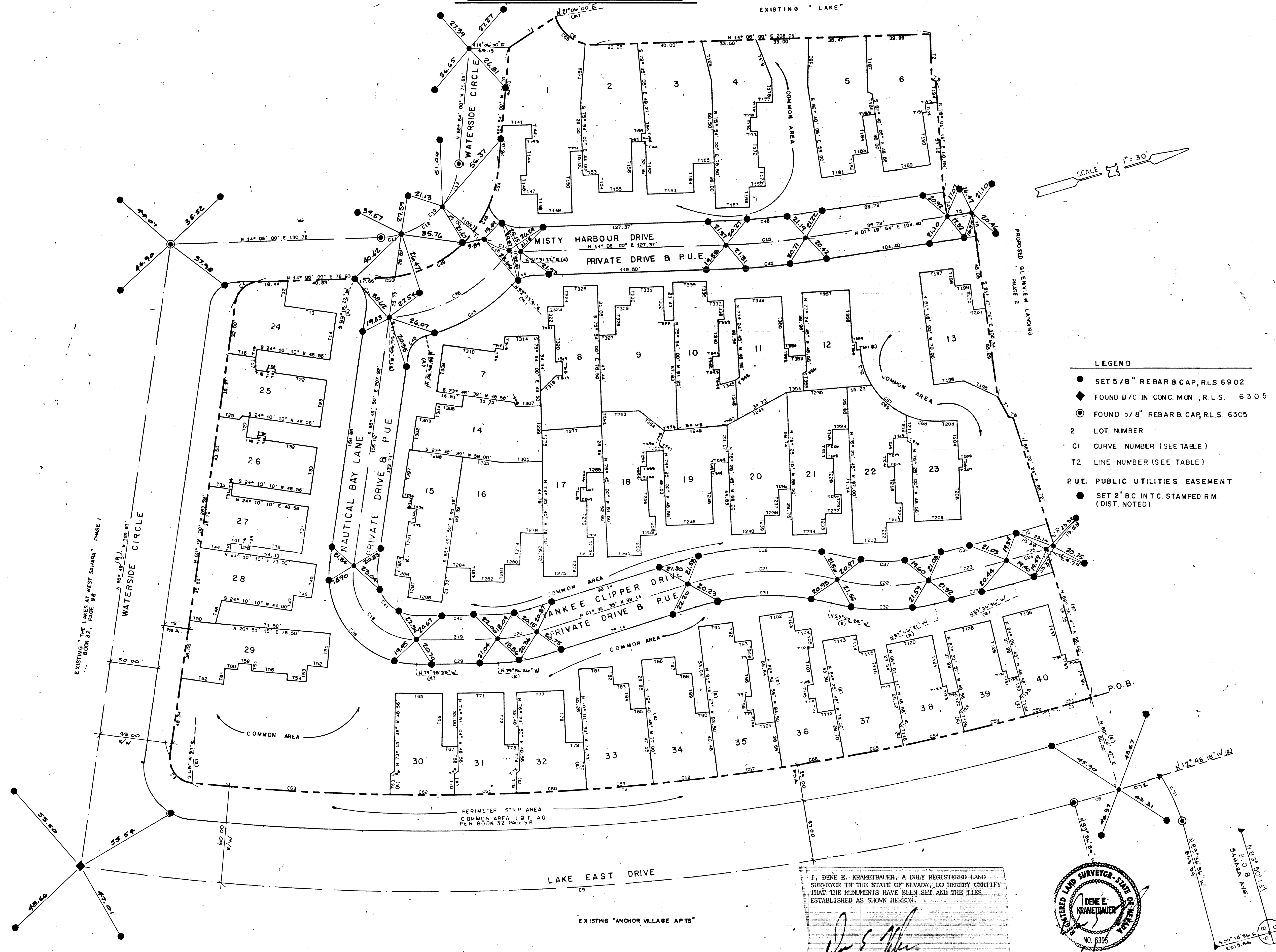


GLENVIEW LANDING PHASE I

A PORTION OF THE EAST HALF OF SECTION 8, T.21 S., R.60 E., M.D.M.

(TOWNHOMES) MONUMENT TIE MAP



- LEGEND**
- SET 5/8" REBAR & CAP, R.L.S. 6902
 - ◆ FOUND B/C IN CONC. MON., R.L.S. 6305
 - ⊙ FOUND 5/8" REBAR & CAP, R.L.S. 6305
 - 2 LOT NUMBER
 - C1 CURVE NUMBER (SEE TABLE)
 - T2 LINE NUMBER (SEE TABLE)
 - P.U.E. PUBLIC UTILITIES EASEMENT
 - SET 2" B.C. IN T.C. STAMPED R.M. (DIST. NOTED)

I, DENE E. KRAMEITRAUER, A DAILY REGISTERED LAND SURVEYOR IN THE STATE OF NEVADA, DO HEREBY CERTIFY THAT THE MONUMENTS HAVE BEEN SET AND THE TIES ESTABLISHED AS SHOWN HEREON.

Dene E. Krametrauer

DENE E. KRAMEITRAUER, R.L.S. 6305

