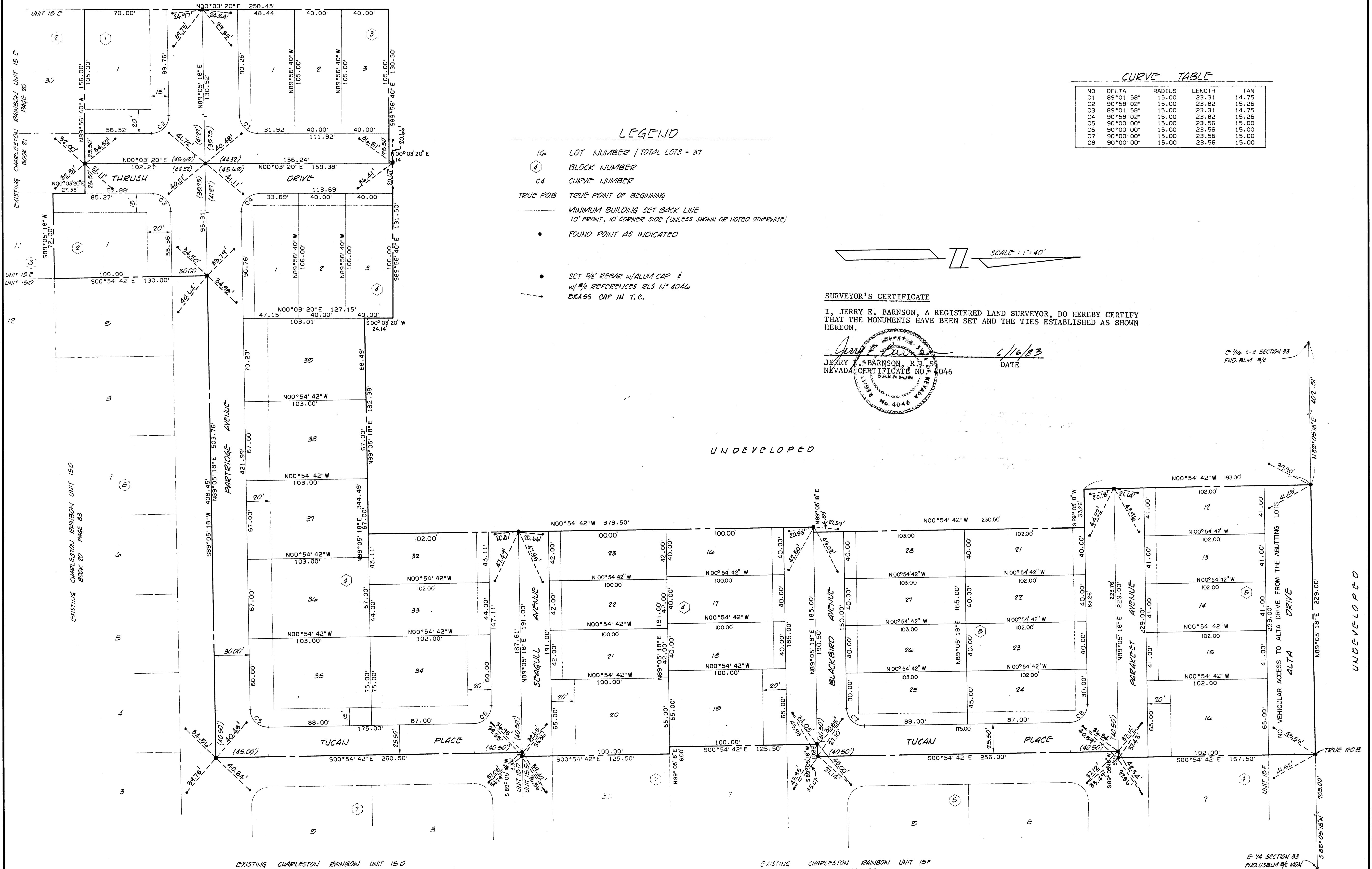


# FORESTCREST - UNIT NO. 1

A PORTION OF THE NE 1/4 OF THE SE 1/4 OF SECTION 33,  
T. 20 S., R. 60 E., M.D.M., CITY OF LAS VEGAS,  
CLARK COUNTY, NEVADA

## MONUMENT TIE MAP

UNDEVELOPED



CURVE TABLE

NO	DELTA	RADIUS	LENGTH	TAN
C1	89°01'58"	15.00	23.31	14.75
C2	90°58'02"	15.00	23.82	15.26
C3	89°01'58"	15.00	23.31	14.75
C4	90°58'02"	15.00	23.82	15.26
C5	90°00'00"	15.00	23.56	15.00
C6	90°00'00"	15.00	23.56	15.00
C7	90°00'00"	15.00	23.56	15.00
C8	90°00'00"	15.00	23.56	15.00

### LEGEND

- 16 LOT NUMBER (TOTAL LOTS = 37)
- 4 BLOCK NUMBER
- C4 CURVE NUMBER
- TRUE POB TRUE POINT OF BEGINNING
- MINIMUM BUILDING SET BACK LINE  
10' FRONT, 10' CORNER SIDE (UNLESS SHOWN OR NOTED OTHERWISE)
- FOUND POINT AS INDICATED
- SET 5/8" REBAR W/ALUM CAP & W/1/4" REFERENCES RLS N° 4046  
BRASS CAP IN T.C.

SCALE: 1" = 40'

### SURVEYOR'S CERTIFICATE

I, JERRY E. BARNSON, A REGISTERED LAND SURVEYOR, DO HEREBY CERTIFY THAT THE MONUMENTS HAVE BEEN SET AND THE TIES ESTABLISHED AS SHOWN HEREON.

Jerry E. Barnson  
JERRY E. BARNSON, R.L.S.  
NEVADA CERTIFICATE NO. 4046

6/16/23  
DATE

E 1/4 SECTION 33  
FND. BLM 1/4

UNDEVELOPED

UNDEVELOPED

EXISTING CHARLESTON RAINBOW UNIT 15 D  
BOOK 20 PAGE 83

EXISTING CHARLESTON RAINBOW UNIT 15 F  
BOOK 20 PAGE 89

E 1/4 SECTION 33  
FND. USBLM 1/4 MON.

