

920430

01465

AMENDED FINAL MAP OF A PORTION OF FOOTHILLS COUNTRY CLUB UNIT NO. 4

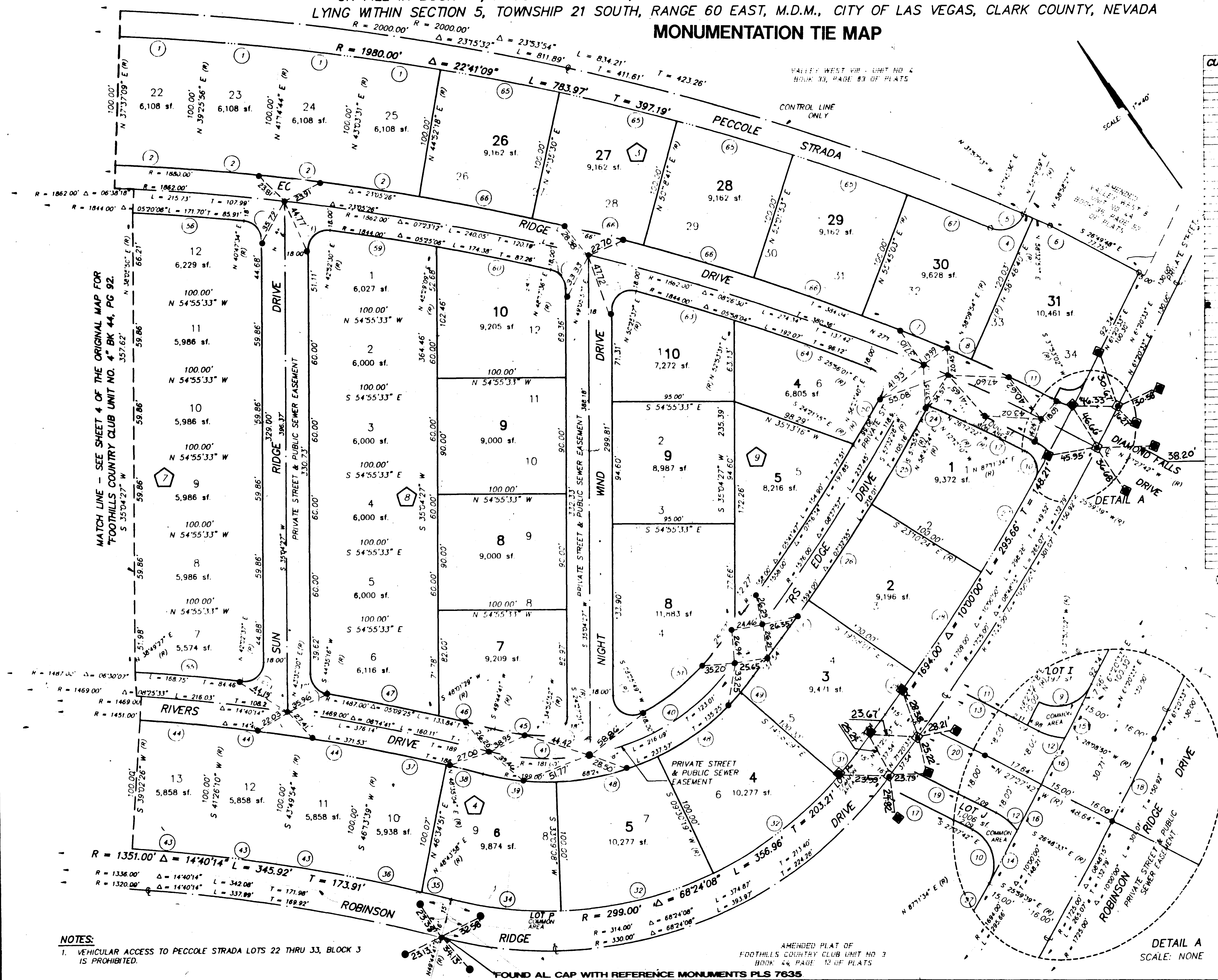
A PLANNED RESIDENTIAL DEVELOPMENT

LOTS 26 THRU 34 OF BLOCK 3, LOTS 1 THRU 10 OF BLOCK 4, LOTS 7 THRU 12 OF BLOCK 8, & LOTS 1 THRU 6 OF BLOCK 9 AS SHOWN ON THE
SUBDIVISION PLAT OF "FOOTHILLS COUNTRY CLUB UNIT NO. 4"

ON FILE IN BOOK 44, PAGE 92 OF PLATS, IN THE CLARK COUNTY RECORDER'S OFFICE, CLARK COUNTY, NEVADA
LYING WITHIN SECTION 5, TOWNSHIP 21 SOUTH, RANGE 60 EAST, M.D.M., CITY OF LAS VEGAS, CLARK COUNTY, NEVADA

MONUMENTATION TIE MAP

I, STEPHEN P. GURLIDES, A PROFESSIONAL LAND SURVEYOR IN THE STATE OF NEVADA, DO HEREBY CERTIFY THAT THE MONUMENTS HAVE BEEN SET AND THE TIE DISTANCE ESTABLISHED AS SHOWN HEREON. THIS SURVEY WAS COMPLETED ON 5-15-98
STEPHEN P. GURLIDES
NEVADA CERTIFICATION NO. 9185



CURVE	DELTA	RADIUS	LENGTH	TANGENT
1	01°48'47"	1980.00'	62.86'	31.33'
2	01°48'47"	1880.00'	59.48'	29.75'
3	00°37'26"	1862.00'	20.28'	10.14'
4	00°12'49"	2000.00'	7.44'	3.77'
5	00°25'24"	2000.00'	31.35'	15.50'
6	00°25'24"	2000.00'	14.28'	7.39'
7	02°24'50"	1880.00'	78.21'	39.61'
8	00°38'49"	1869.24'	12.05'	6.03'
9	01°17'45"	15.00'	25.08'	15.32'
10	01°28'03"	15.00'	23.95'	15.39'
11	03°43'58"	1069.24'	69.56'	34.79'
12	24°39'16"	25.00'	10.76'	5.46'
13	04°22'24"	1069.24'	61.63'	40.83'
14	00°46'56"	1694.00'	23.13'	11.56'
15	00°30'36"	1694.00'	15.05'	7.54'
16	00°41'08"	1694.00'	20.27'	10.14'
17	04°36'31"	1023.24'	82.30'	41.17'
18	01°17'45"	1725.00'	36.00'	18.00'
19	03°48'54"	1033.24'	68.80'	34.41'
20	04°22'24"	1051.24'	60.24'	40.14'
21	04°55'46"	15.00'	22.23'	13.73'
22	07°40'19"	15.00'	25.57'	17.16'
23	14°00'12"	15.00'	31.67'	18.84'
24	20°55'34"	15.00'	38.57'	24.08'
25	03°01'58"	1594.00'	84.37'	42.20'
26	03°12'29"	1594.00'	89.21'	44.62'
27	02°49'15"	1694.00'	63.40'	31.71'
28	03°12'29"	1694.00'	94.01'	47.47'
29	01°16'34"	1694.00'	36.71'	18.36'
30	01°16'34"	1594.00'	36.43'	18.22'
31	04°30'58"	299.00'	23.22'	11.79'
32	23°38'48"	299.00'	123.40'	62.59'
33	OMITTED			
34	16°35'33"	299.00'	86.59'	43.60'
35	01°00'43"	1351.00'	23.86'	11.93'
36	02°30'19"	1351.00'	59.07'	29.54'
37	02°21'25"	1451.00'	59.69'	29.85'
38	01°09'37"	1451.00'	29.39'	14.69'
39	16°35'33"	189.00'	37.83'	19.02'
40	02°08'20"	181.00'	136.18'	71.49'
41	25°17'40"	181.00'	79.91'	40.62'
42	09°51'25"	15.00'	23.52'	14.96'
43	02°21'44"	1351.00'	56.49'	28.25'
44	02°21'44"	1451.00'	60.67'	30.34'
45	14°48'49"	163.00'	42.14'	21.19'
46	01°43'12"	1487.00'	44.64'	22.32'
47	03°26'13"	1487.00'	89.20'	44.61'
48	23°38'48"	199.00'	82.13'	41.66'
49	04°30'58"	199.00'	15.69'	7.85'
50	01°34'46"	1558.00'	42.95'	21.48'
51	27°05'16"	163.00'	77.06'	39.26'
52	116°34'34"	15.00'	30.54'	24.31'
53	80°29'11"	15.00'	21.07'	12.70'
54	06°58'10"	15.00'	25.39'	16.95'
55	03°17'10"	1487.00'	83.55'	41.79'
56	02°14'44"	1844.00'	86.75'	43.38'
57	04°16'53"	15.00'	22.66'	13.57'
58	07°48'03"	15.00'	25.60'	17.20'
59	08°36'39"	1844.00'	84.03'	42.02'
60	02°48'27"	1844.00'	90.36'	45.18'
61	76°46'51"	15.00'	20.10'	11.06'
62	103°21'10"	15.00'	27.58'	19.67'
63	02°27'54"	1844.00'	79.34'	39.67'
64	03°10'09"	1844.00'	112.22'	56.56'
65	02°43'11"	1980.00'	93.99'	47.00'
66	02°43'11"	1880.00'	89.24'	44.63'
67	02°00'32"	1980.00'	69.43'	34.72'

NOTE:
MIN. SETBACK
16' FRONT YARD - FRONT ENTRY GARAGES
10' FRONT YARD - SIDE ENTRY GARAGES
5' SIDE YARD CORNER

LEGEND

- SET TYPE III MONUMENT - AL CAP WITH P.L.S. 9105 W/ BRASS CAP TIES IN TOP OF CURB (UNLESS OTHERWISE NOTED)
- MONUMENTATION AS SHOWN AND DESCRIBED
- POINT NOT FOUND OR SET
- ⑤ BLOCK NUMBER
- ⑩ CURVE NUMBER
- SUBDIVISION BOUNDARY LINE
- 10 ORIGINAL UNIT #4 LOT NUMBER
- 10 ORIGINAL UNIT #4 LOT LINE
- 10 AMENDED UNIT #4 LOT NUMBER
- 10 AMENDED UNIT #4 LOT LINE
- AMENDED LOTS
- FOUND AL CAP PLS 6201 WITH BRASS CAP REFERENCE TIES

NOTES:
1. VEHICULAR ACCESS TO PECCOLE STRADA LOTS 22 THRU 33, BLOCK 3 IS PROHIBITED.

AMENDED PLAT OF FOOTHILLS COUNTRY CLUB UNIT NO. 4
BOOK 44, PAGE 12 OF PLATS

FOUND AL CAP WITH REFERENCE MONUMENTS PLS 7635

DETAIL A
SCALE: NONE

SHEET 2 OF 2

AMENDED FINAL MAP OF A PORTION OF FOOTHILLS COUNTRY CLUB UNIT NO. 4

A PLANNED RESIDENTIAL DEVELOPMENT

LOTS 20 THRU 24 OF BLOCK 3, LOTS 1 THRU 6 OF BLOCK 4, LOTS 7 THRU 13 OF BLOCK 5, & LOTS 1 THRU 6 OF BLOCK 6 AS SHOWN ON THE

SUBSEQUENT PLAN OF Foothills Country Club Unit No. 4

ON FILE IN BOOK 44, PAGE 68 OF PLATS, IN THE CLARK COUNTY RECORDER'S OFFICE, CLARK COUNTY, ARIZONA

LIVING WITHIN SECTION 4, TOWNSHIP 21 SOUTH, RANGE 20 EAST, MERIDIAN, CITY OF LAS VEGAS, CLARK COUNTY, NEVADA

MONUMENTATION THE MAP

