

BOOK 291029
 Book 291029

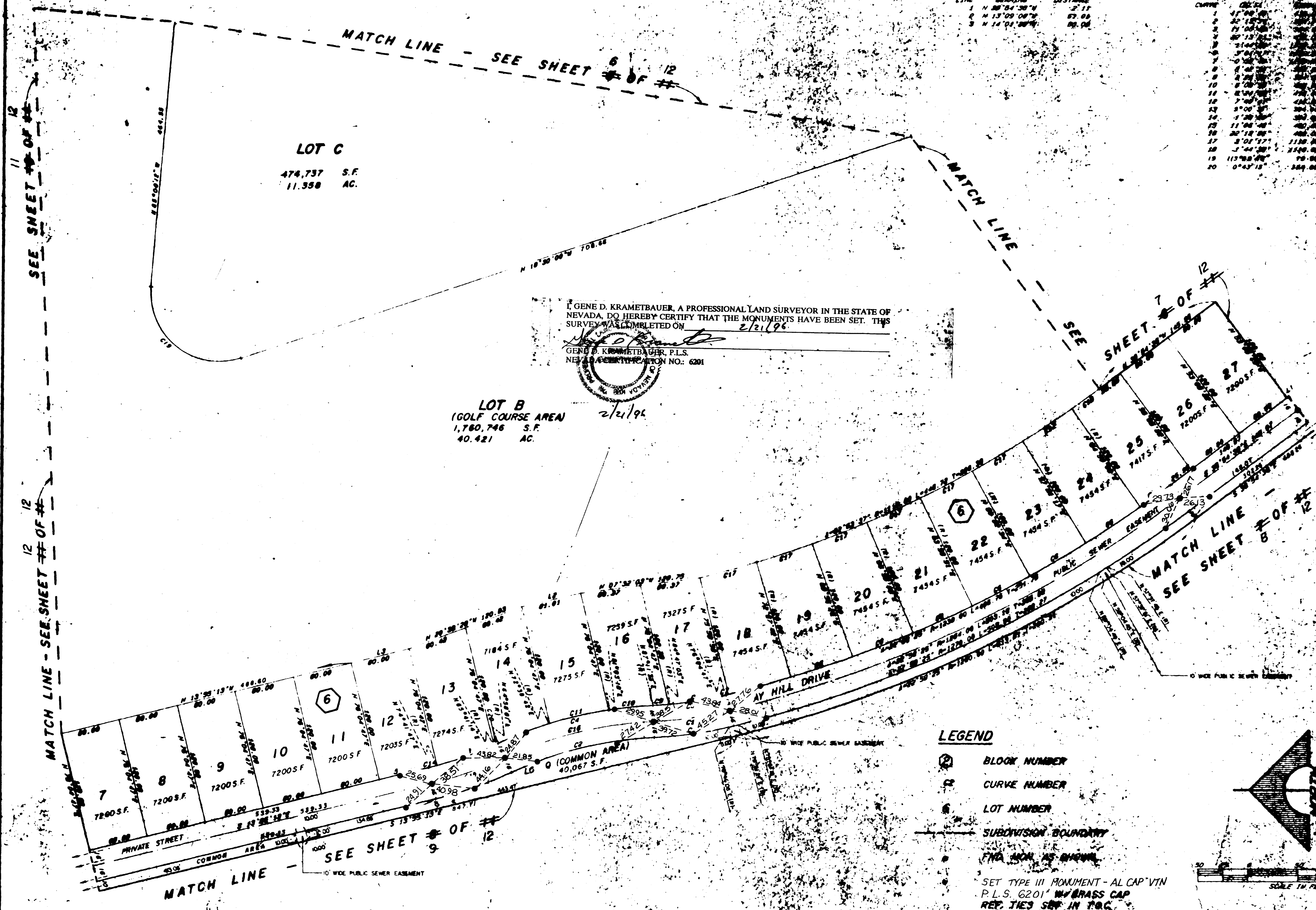
00976
 00977

AMENDED PLAT OF FOOTHILLS COUNTRY CLUB UNIT NO. 3

A PORTION OF SECTION 5, T. 21 S., R. 60 E., M. D. M.,
 CITY OF LAS VEGAS, CLARK COUNTY, NEVADA
 MONUMENTATION TIE MAP

LINE	BEARING	DISTANCE
1	N 89° 04' 30" W	27.17
2	N 13° 09' 00" W	67.00
3	N 14° 01' 00" W	68.00

CURVE	CHORD	ARC	AREA	PERCENT
1	11.00	11.00	0.00	0.00
2	11.00	11.00	0.00	0.00
3	11.00	11.00	0.00	0.00
4	11.00	11.00	0.00	0.00
5	11.00	11.00	0.00	0.00
6	11.00	11.00	0.00	0.00
7	11.00	11.00	0.00	0.00
8	11.00	11.00	0.00	0.00
9	11.00	11.00	0.00	0.00
10	11.00	11.00	0.00	0.00
11	11.00	11.00	0.00	0.00
12	11.00	11.00	0.00	0.00
13	11.00	11.00	0.00	0.00
14	11.00	11.00	0.00	0.00
15	11.00	11.00	0.00	0.00
16	11.00	11.00	0.00	0.00
17	11.00	11.00	0.00	0.00
18	11.00	11.00	0.00	0.00
19	11.00	11.00	0.00	0.00
20	11.00	11.00	0.00	0.00



I, GENE D. KRAMETBAUER, A PROFESSIONAL LAND SURVEYOR IN THE STATE OF NEVADA, DO HEREBY CERTIFY THAT THE MONUMENTS HAVE BEEN SET. THIS SURVEY WAS COMPLETED ON 2/21/96.

GENE D. KRAMETBAUER, P.L.S.
 NEVADA LICENSE NUMBER NO. 6201

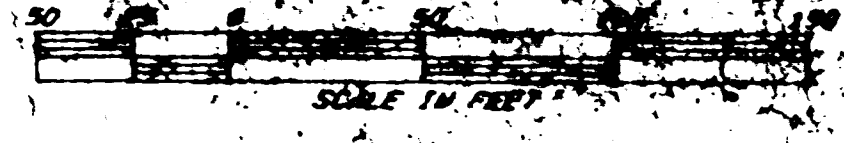
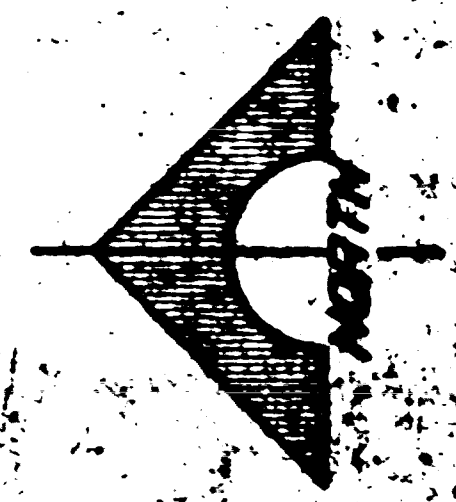
LOT B
 (GOLF COURSE AREA)
 1,760,746 S.F.
 40.421 AC.

LOT C
 474,737 S.F.
 11.558 AC.

LEGEND

- BLOCK NUMBER
- CURVE NUMBER
- LOT NUMBER
- SUBDIVISION BOUNDARY
- MONUMENT AS SHOWN

SET TYPE III MONUMENT - ALL CAP VIN
 P.L.S. 6201 W/ BRASS CAP
 REF. TIES SET IN P.C.



058-1407-3
 2609

AMENDED PLAN OF
FOOTHILLS COUNTRY CLUB UNIT NO. 3

A PORTION OF SECTION 5, T 21 N., R 59 E., M 4 N.,

CITY OF LAS VEGAS, CLARK COUNTY, NEVADA
NONREVENUE TO MAP

