

BOOK 891025
 Book 891025

009
 009

AMENDED PLAT OF FOOTHILLS COUNTRY CLUB UNIT NO. 3

A PORTION OF SECTION 5, T 21 N, R 60 E, M 8 W
 CITY OF LAS VEGAS, CLARK COUNTY, NEVADA

LEGEND

- ⊙ BLOCK NUMBER
- C# CURVE NUMBER
- Ⓛ LOT NUMBER
- SUBDIVISION BOUNDARY
- FND. MON. AS SHOWN
- SET TYPE III MONUMENT - AL CAP
 P.L.S. 6201" W/ BRASS CAP
 REF TIES SET IN T.O.C. UNLESS
 OTHERWISE NOTED.

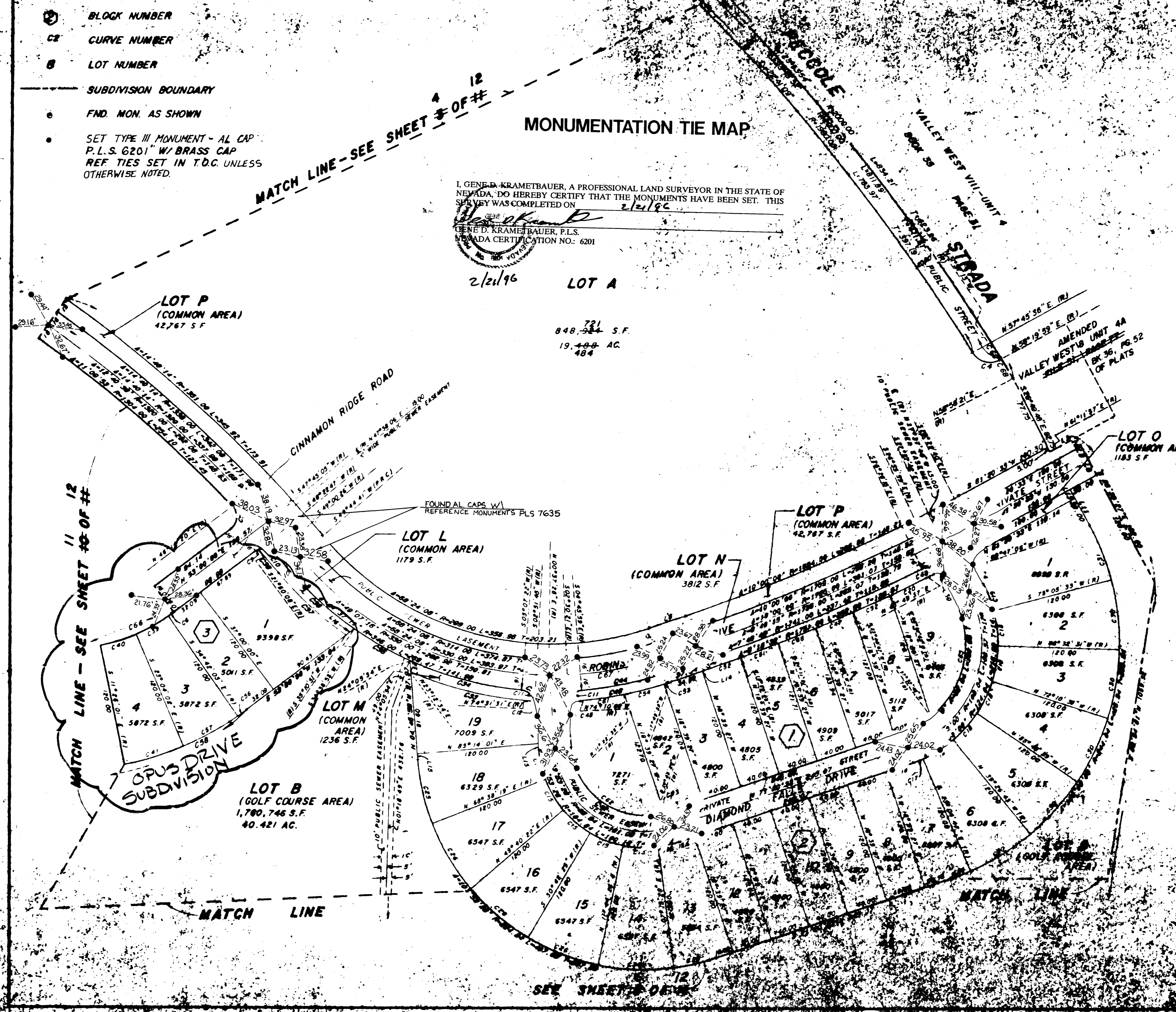
MONUMENTATION TIE MAP

I, GENE D. KRAMETBAUER, A PROFESSIONAL LAND SURVEYOR IN THE STATE OF NEVADA, DO HEREBY CERTIFY THAT THE MONUMENTS HAVE BEEN SET. THIS SURVEY WAS COMPLETED ON 2/21/96

Gene D. Krametbauer, F.L.S.
 NEVADA CERTIFICATION NO.: 6201

2/21/96 LOT A

721
 848,324 S.F.
 19,400 AC
 484



LINE	BEARING	DISTANCE
1	N 81° 28' 28" W	29.87
2	S 73° 28' 28" W	37.80
3	S 04° 45' 00" E	79.48
4	N 24° 30' 28" W	80.38
5	S 71° 20' 50" E	27.54
6	N 71° 20' 50" E	37.54
7	N 20° 30' 27" W	16.00
8	N 20° 30' 27" W	16.00
9	N 20° 30' 27" W	16.00
10	N 20° 30' 27" W	16.00
11	S 04° 45' 00" E	40.88
12	S 04° 45' 00" E	11.27
13	N 20° 30' 27" W	16.00
14	S 71° 20' 50" E	27.54
15	N 24° 30' 28" W	80.38
16	N 81° 28' 28" W	29.87

CURVE	DELTA	CHORDS	LENGTH	TANGENT
1	1° 11' 48"	1725.00	30.00	18.00
2	1° 39' 37"	1360.00	40.00	20.00
3	2° 15' 37"	2020.00	50.00	25.00
4	06° 24' 55"	20.00	30.17	15.75
5	06° 48' 40"	15.00	40.33	18.00
6	2° 17' 57"	181.00	7.26	3.43
7	00° 00' 20"	15.00	20.00	13.00
8	0° 44' 13"	1304.00	30.70	8.30
9	15° 05' 58"	15.00	3.87	2.00
10	70° 50' 34"	15.00	18.25	18.87
11	60° 24' 00"	15.00	18.17	10.30
12	10° 42' 30"	15.00	2.80	1.41
13	80° 00' 30"	15.00	20.87	12.81
14	10° 44' 42"	104.84	30.39	15.23
15	10° 37' 87"	104.84	34.70	17.51
16	11° 25' 58"	104.84	20.82	10.49
17	4° 25' 20"	124.04	8.57	4.78
18	16° 21' 58"	124.04	25.43	17.84
19	13° 45' 00"	124.04	28.77	14.86
20	11° 48' 11"	174.00	25.18	27.57
21	30° 36' 42"	35.00	20.00	15.00
22	07° 08' 42"	1791.00	4.00	2.40
23	70° 45' 18"	15.00	18.51	10.84
24	18° 20' 30"	15.00	8.89	2.57
25	18° 35' 37"	224.84	65.12	32.78
26	01° 57' 57"	224.84	37.84	37.84
27	09° 42' 48"	20.00	31.18	19.90
28	11° 25' 58"	224.84	44.84	22.81
29	4° 25' 20"	224.84	19.84	9.40
30	16° 21' 58"	244.04	48.71	33.00
31	13° 45' 00"	244.04	58.57	39.40
32	11° 48' 11"	174.00	40.20	20.10
33	20° 20' 40"	320.00	126.40	63.00
34	18° 58' 18"	340.00	124.50	67.00
35	10° 30' 18"	340.00	63.74	31.80
36	13° 05' 40"	340.00	81.17	40.00
37	14° 53' 28"	320.00	80.38	40.00
38	1° 21' 54"	1204.00	60.00	42.00
39	11° 38' 01"	181.00	36.75	18.44
40	11° 38' 01"	181.00	36.75	18.44
41	11° 38' 01"	301.00	81.12	30.86
42	103° 50' 00"	72.84	130.00	63.00
43	02° 00' 00"	15.00	25.00	15.00
44	13° 53' 20"	340.00	83.00	42.25
45	20° 35' 51"	15.00	5.30	2.73
46	18° 08' 04"	320.00	100.30	50.31
47	14° 18' 41"	1751.00	40.13	20.06
48	14° 18' 41"	1751.00	40.06	20.06
49	70° 17' 50"	15.00	18.40	14.40
50	17° 30' 50"	15.00	4.30	2.31
51	1° 18' 35"	1751.00	40.03	20.01
52	14° 13' 18"	1751.00	37.34	18.87
53	01° 49' 20"	350.00	9.12	2.56
54	11° 45' 24"	350.00	40.12	20.08
55	07° 40' 40"	18.00	20.00	14.44
56	2° 17' 57"	301.00	12.08	6.04
57	1° 38' 01"	301.00	61.12	30.86
58	64° 00' 00"	301.00	339.22	188.00
59	01° 01' 47"	1709.00	30.71	18.76
60	01° 01' 47"	1694.00	30.44	18.22
61	8° 52' 14"	356.00	53.12	27.61
62	39° 47' 23"	72.84	127.07	64.74
63	3° 36' 03"	72.84	5.00	2.50
64	10° 18' 16"	92.84	30.40	15.38
65	81° 01' 44"	92.84	130.16	70.83
66	84° 00' 00"	181.00	308.00	113.10
67	13° 16' 53"	330.00	111.83	56.08
68	00° 00' 00"	2000.00	22.32	11.16

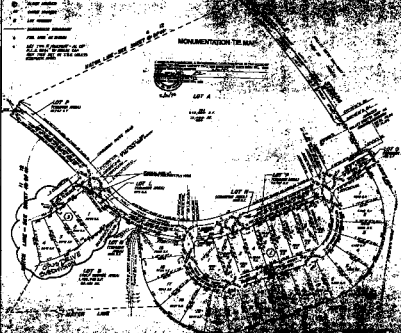
058-1401-3

2611

FOOTHILLS COMMUNITY CLUB LOTS, MAP 3

A PORTION OF SECTION 36, T.13N. R.10E. S.10E.
CITY OF LOS ANGELES

- 1. LOT NUMBER
- 2. LOT AREA
- 3. LOT DIMENSIONS
- 4. LOT PERCENTAGE
- 5. LOT AREA IN ACRES
- 6. LOT PERCENTAGE OF TOTAL LOT AREA
- 7. LOT AREA IN SQUARE FEET
- 8. LOT PERCENTAGE OF TOTAL LOT AREA



MONUMENTATION TABLE

THESE LOTS ARE THE PROPERTY OF THE CITY OF LOS ANGELES AND ARE BEING OFFERED FOR SALE BY THE CITY ENGINEER. THE CITY ENGINEER HAS BEEN ADVISED BY THE CITY ATTORNEY THAT THE CITY HAS THE RIGHT TO TAKE THESE LOTS FOR PUBLIC USE AND THAT THE CITY IS NOT RESPONSIBLE FOR THE ACCURACY OF THE INFORMATION CONTAINED HEREIN. THE CITY ENGINEER HAS BEEN ADVISED BY THE CITY ATTORNEY THAT THE CITY HAS THE RIGHT TO TAKE THESE LOTS FOR PUBLIC USE AND THAT THE CITY IS NOT RESPONSIBLE FOR THE ACCURACY OF THE INFORMATION CONTAINED HEREIN.

