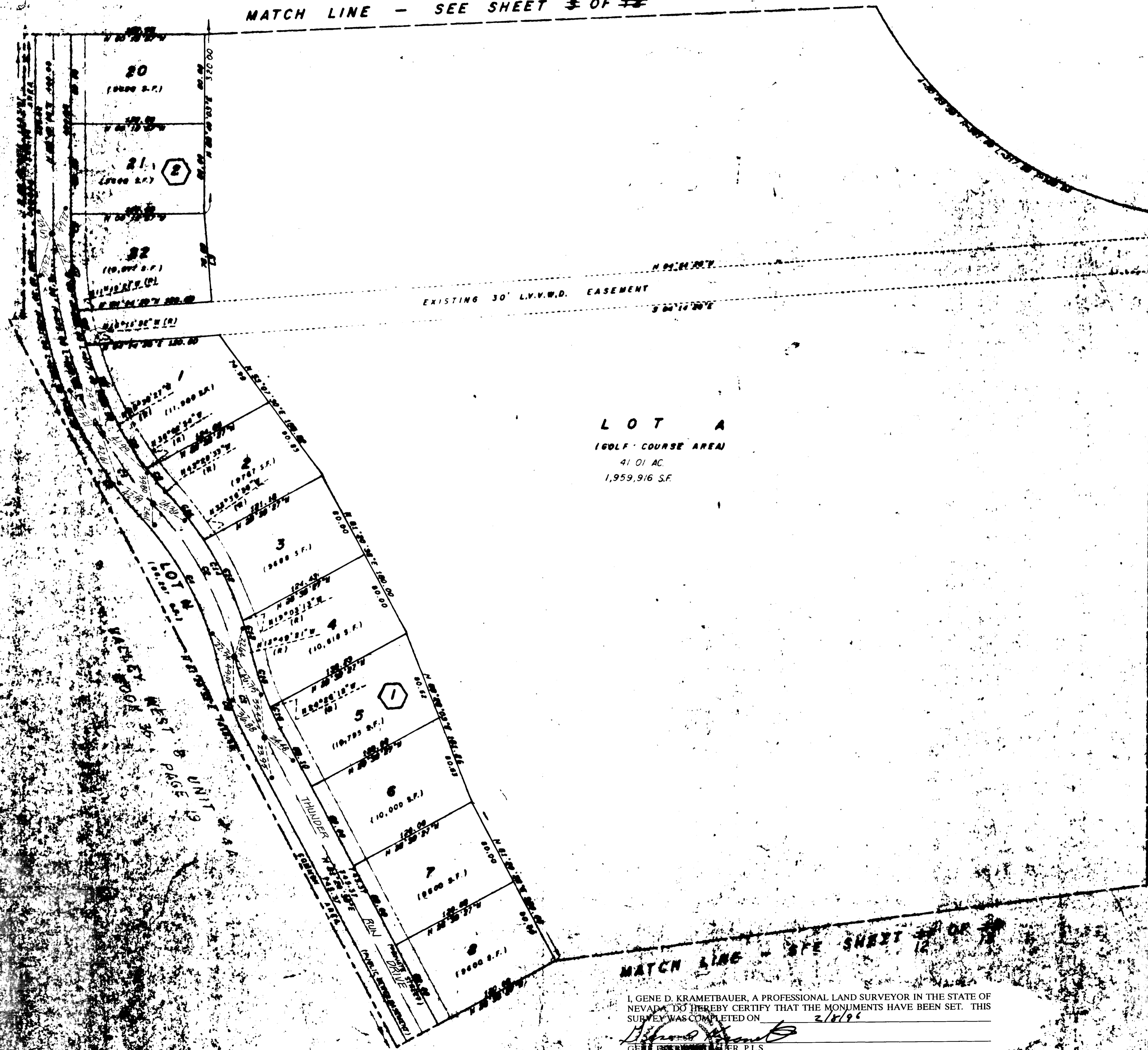


8005 870313

# AMENDED PLAT OF FOOTHILLS COUNTRY CLUB UNIT NO. 2 MONUMENTATION TIE MAP

00525

MATCH LINE - SEE SHEET 4 OF 13



LINE	BEARING	DISTANCE
1	S 04°14'30"W	13.77
2	N 89°40'00"E	18.37
3	N 89°08'00"E	79.89

LINE	BEARING	DISTANCE	AREA	PERCENT
1	S 14°30'00"W	300.00	77.00	38.00
2	S 89°40'00"E	300.00	150.00	70.00
3	S 89°08'00"E	300.00	150.00	70.00
4	S 89°08'00"E	300.00	150.00	70.00
5	S 89°08'00"E	300.00	150.00	70.00
6	S 89°08'00"E	300.00	150.00	70.00
7	S 89°08'00"E	300.00	150.00	70.00
8	S 89°08'00"E	300.00	150.00	70.00
9	S 89°08'00"E	300.00	150.00	70.00
10	S 89°08'00"E	300.00	150.00	70.00
11	S 89°08'00"E	300.00	150.00	70.00
12	S 89°08'00"E	300.00	150.00	70.00
13	S 89°08'00"E	300.00	150.00	70.00
14	S 89°08'00"E	300.00	150.00	70.00
15	S 89°08'00"E	300.00	150.00	70.00
16	S 89°08'00"E	300.00	150.00	70.00
17	S 89°08'00"E	300.00	150.00	70.00
18	S 89°08'00"E	300.00	150.00	70.00
19	S 89°08'00"E	300.00	150.00	70.00
20	S 89°08'00"E	300.00	150.00	70.00

**LOT A**  
 (GOLF COURSE AREA)  
 41.01 AC  
 1,959,916 S.F.

MATCH LINE - SEE SHEET 12 OF 13

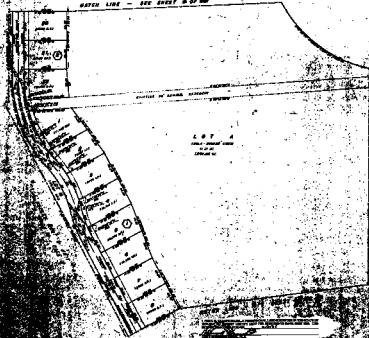
I, GENE D. KRAMETBAUER, A PROFESSIONAL LAND SURVEYOR IN THE STATE OF NEVADA, DO HEREBY CERTIFY THAT THE MONUMENTS HAVE BEEN SET. THIS SURVEY WAS COMPLETED ON 2/1/96

*Gene D. Krametbauer*  
 GENE D. KRAMETBAUER, P.L.S.  
 NEVADA CERTIFICATION NO. 6201

Sheet 13 of 13  
 056-1407

AMENDED PLAT OF  
**FOOTHILLS COUNTRY CLUB UNIT NO. 2**  
MONUMENTATION THE MAP

WATER LINE - SEE SHEET 2 OF 24



LOT 1  
AREA - 10000 SQ. FT.  
10000 SQ. FT.  
10000 SQ. FT.

