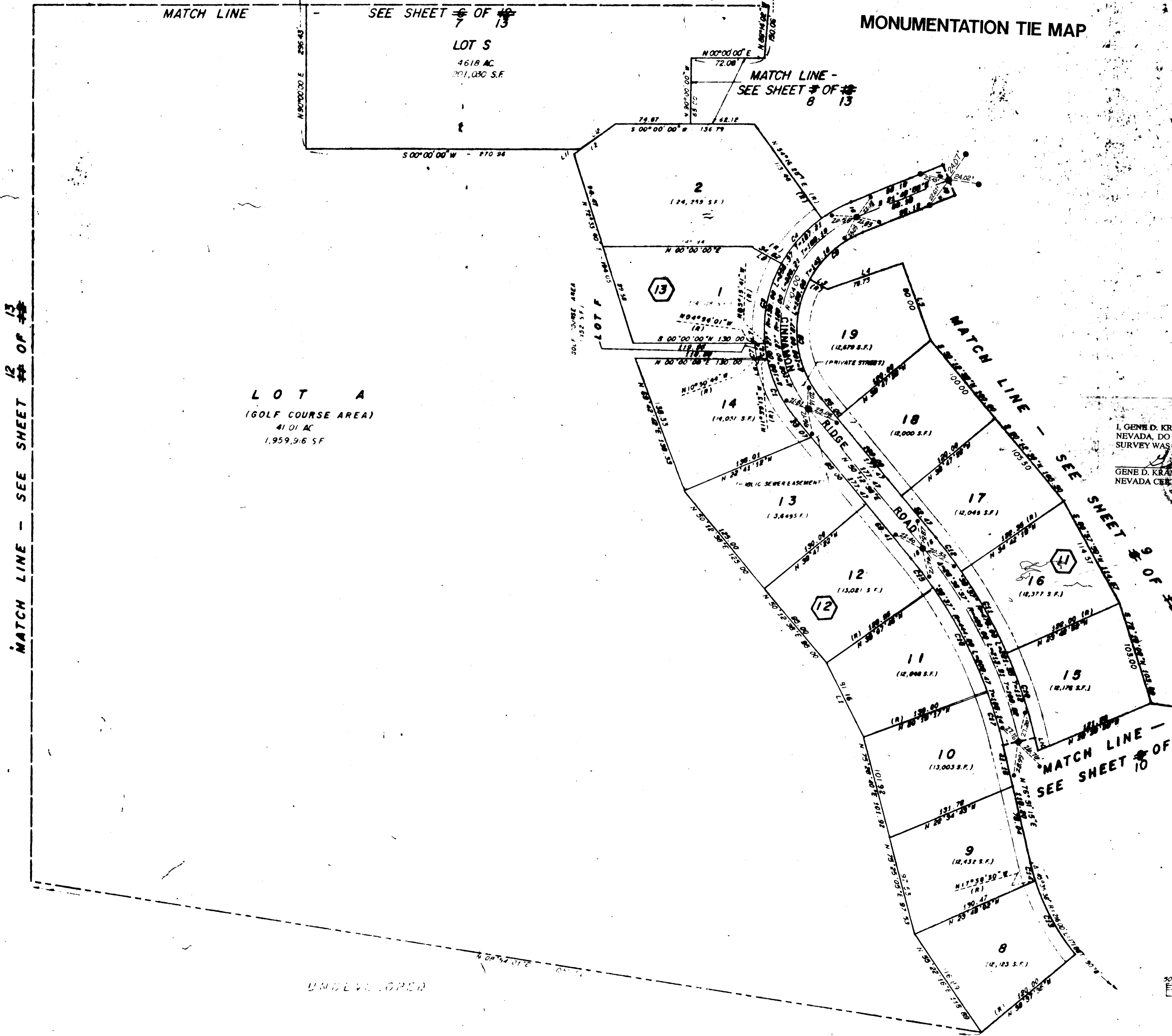


Book 890313

AMENDED PLAT OF FOOTHILLS COUNTRY CLUB UNIT NO. 2

00525

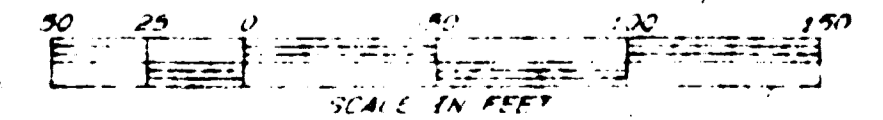
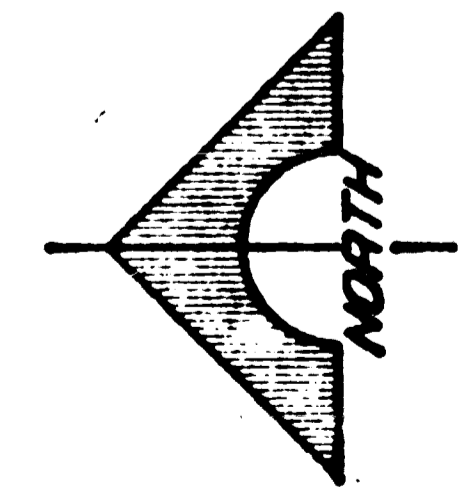


LINE	BEARING	DISTANCE
1	N 83° 00' 43" E	81.88
2	N 34° 00' 00" W	50.82
3	S 28° 57' 17" W (R)	76.70
4	S 18° 57' 45" E	76.70
5	S 70° 00' 00" W	80.00
6	S 00° 00' 00" N	10.00
7	N 00° 00' 00" E	10.00
8	S 84° 38' 26" W (R)	18.00
9	N 00° 00' 00" W (R)	24.00
10	N 78° 31' 18" E	18.00
11	N 56° 00' 00" W	18.00
12	N 36° 00' 00" W	48.88

CURVE	DELTA	RADIUS	LENGTH	TANGENT
1	28° 00' 00"	136.00	86.70	34.00
2	8° 28' 30"	136.00	15.17	7.90
3	34° 11' 30"	136.00	87.15	41.80
4	28° 00' 00"	136.00	86.70	34.00
5	13° 58' 45"	136.00	39.10	18.00
6	5° 58' 45"	136.00	13.15	7.90
7	8° 28' 30"	136.00	15.17	7.90
8	34° 11' 30"	136.00	87.15	41.80
9	28° 00' 00"	136.00	86.70	34.00
10	13° 58' 45"	136.00	39.10	18.00
11	5° 58' 45"	136.00	13.15	7.90
12	8° 28' 30"	136.00	15.17	7.90
13	34° 11' 30"	136.00	87.15	41.80
14	28° 00' 00"	136.00	86.70	34.00
15	13° 58' 45"	136.00	39.10	18.00
16	5° 58' 45"	136.00	13.15	7.90
17	8° 28' 30"	136.00	15.17	7.90

I, GENE D. KRAMEBAUER, A PROFESSIONAL LAND SURVEYOR IN THE STATE OF NEVADA, DO HEREBY CERTIFY THAT THE MONUMENTS HAVE BEEN SET. THIS SURVEY WAS COMPLETED 2/12/96

GENE D. KRAMEBAUER, P.L.S.
NEVADA CERTIFICATION NO. 6201



MATCH LINE - SEE SHEET 12 OF 13

LOT A
(GOLF COURSE AREA)
41.01 AC
1,959,916 SF

LOT S
4618 AC
201,030 SF

LOT F
(122 SF)

2
(24,253 SF)

13
(14,041 SF)

19
(12,478 SF)

14
(14,041 SF)

18
(12,000 SF)

13
(13,845 SF)

17
(12,048 SF)

12
(13,021 SF)

16
(10,377 SF)

11
(12,000 SF)

15
(10,176 SF)

10
(13,003 SF)

9
(12,432 SF)

8
(12,123 SF)

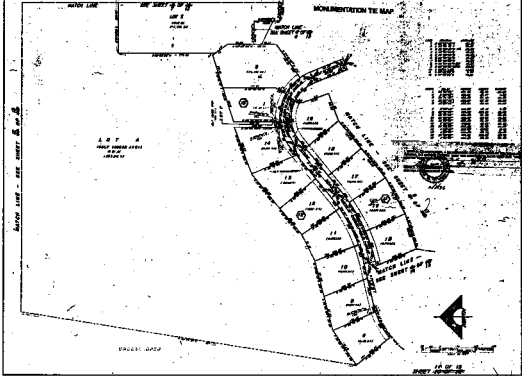
UNDEVELOPED

MATCH LINE - SEE SHEET 10 OF 13

APR 1 1930

AMENDED PLAT OF FOOTHILLS COUNTRY CLUB UNIT NO. 2

00526



Match Line - See Sheet 10 of 12

LOT A
HALF INTEREST
AS SHOWN
HEREIN

PROCESSED