

Book 890313

AMENDED PLAT OF FOOTHILLS COUNTRY CLUB UNIT NO. 2

00525

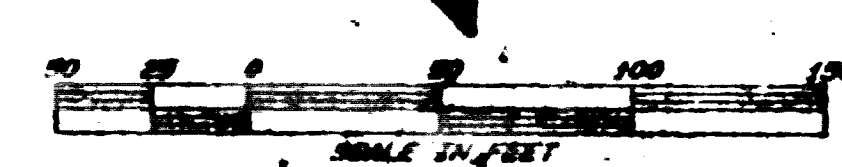
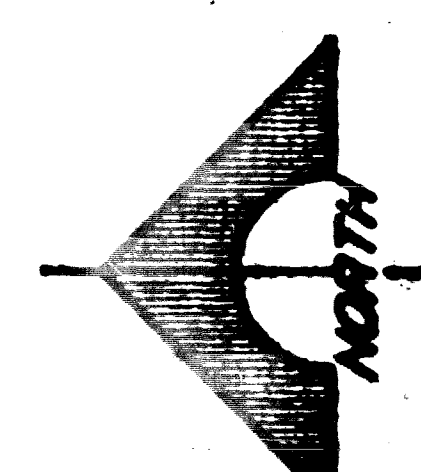
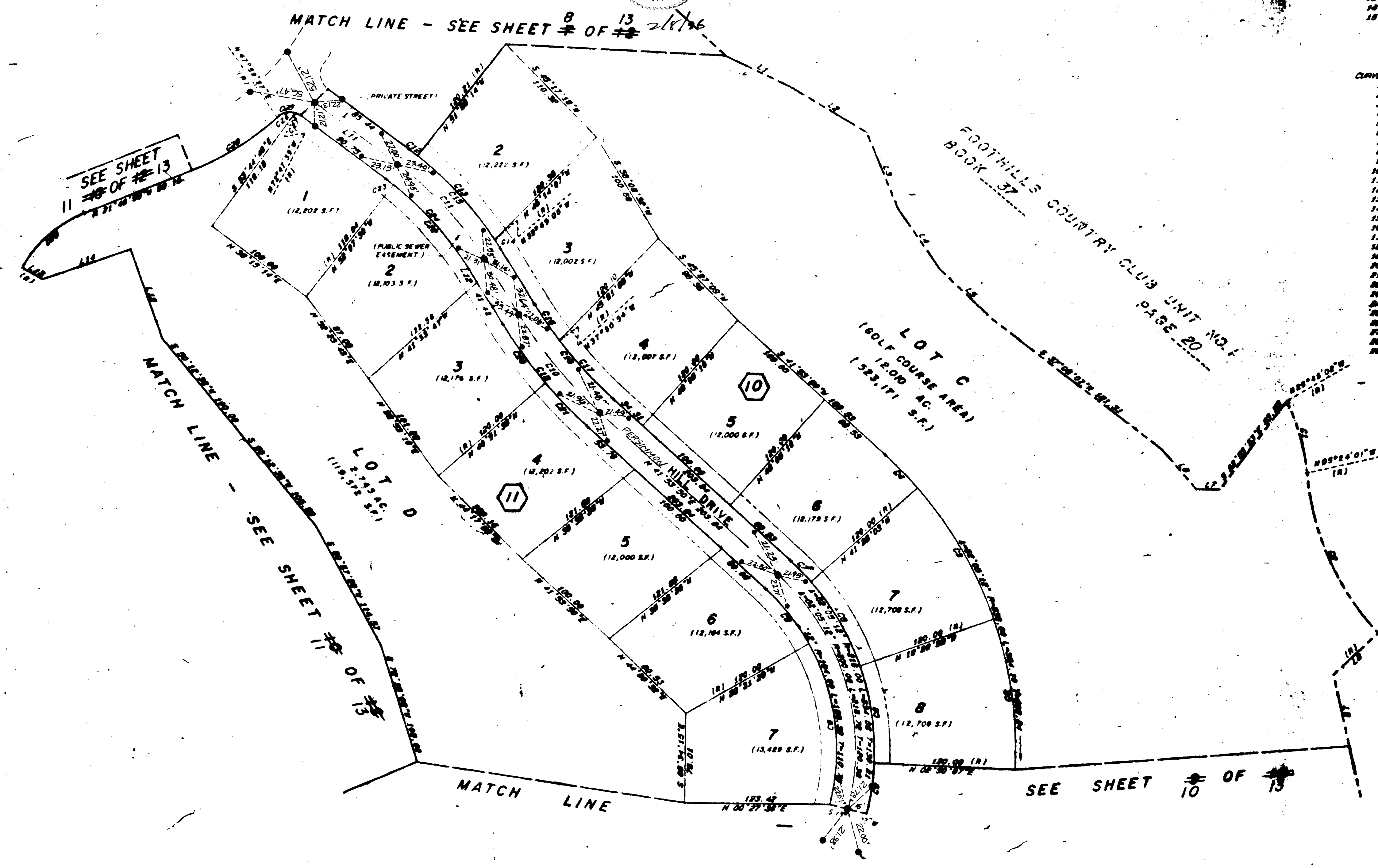
MONUMENTATION TIE MAP

I, GENE D. KRAMETBAUER, A PROFESSIONAL LAND SURVEYOR IN THE STATE OF NEVADA, DO HEREBY CERTIFY THAT THE MONUMENTS HAVE BEEN SET. THIS SURVEY WAS COMPLETED ON 2/8/46

GENE D. KRAMETBAUER, P.L.S.
NEVADA CERTIFICATION NO. 6201

LINE	BEARING	DISTANCE
1	S 25° 15' 00" W	60.00
2	S 20° 57' 00" W	74.40
3	S 07° 54' 00" W	60.00
4	S 54° 23' 30" W	60.00
5	S 43° 00' 00" W	60.00
6	S 08° 10' 00" W	60.00
7	S 20° 30' 00" W	20.00
8	S 44° 21' 00" W (12')	12.00
9	S 27° 10' 00" W	12.00
10	N 27° 00' 00" E	20.00
11	N 30° 15' 14" E	60.00
12	S 07° 00' 00" W	24.00
13	S 20° 30' 17" W	20.00
14	S 20° 57' 00" W	70.00
15	S 70° 00' 00" W	60.00

CLAVE	DEG. TA	RADIUS	LENGTH	TANGENT
1	21° 21' 00"	174.00	64.04	32.00
2	57° 42' 12"	100.00	140.00	77.00
3	21° 30' 00"	320.00	100.00	60.00
4	0° 30' 00"	200.00	30.00	18.00
5	18° 34' 00"	104.00	60.00	30.10
6	43° 30' 00"	104.00	50.00	20.00
7	0° 30' 00"	140.00	60.00	41.00
8	21° 30' 00"	210.00	60.00	31.00
9	11° 30' 00"	210.00	40.00	21.00
10	18° 37' 00"	300.00	100.00	54.00
11	21° 30' 00"	200.00	100.00	60.00
12	1° 00' 00"	300.00	0.00	4.00
13	18° 37' 00"	300.00	60.00	40.00
14	0° 30' 00"	200.00	0.00	4.00
15	21° 30' 00"	300.00	110.00	60.00
16	0° 41' 40"	374.00	57.10	10.00
17	10° 18' 10"	374.00	60.00	30.00
18	15° 37' 00"	374.00	104.12	50.00
19	18° 37' 00"	400.00	110.00	60.00
20	0° 40' 00"	400.00	61.00	30.00
21	7° 14' 34"	400.00	51.00	20.00
22	18° 30' 00"	274.00	60.00	40.00
23	1° 37' 10"	274.00	7.00	3.00
24	21° 30' 00"	274.00	100.00	60.00
25	70° 00' 00"	60.00	20.00	10.00
26	30° 12' 44"	70.00	30.00	0.00
27	10° 10' 00"	10.00	4.00	0.00
28	20° 10' 00"	100.00	60.00	40.00
29	30° 17' 40"	104.00	61.00	37.00



9 OF 13
SHEET 8 OF 12

2602

Book 42 Page 4

05B-1467-2

