

Book 8790313

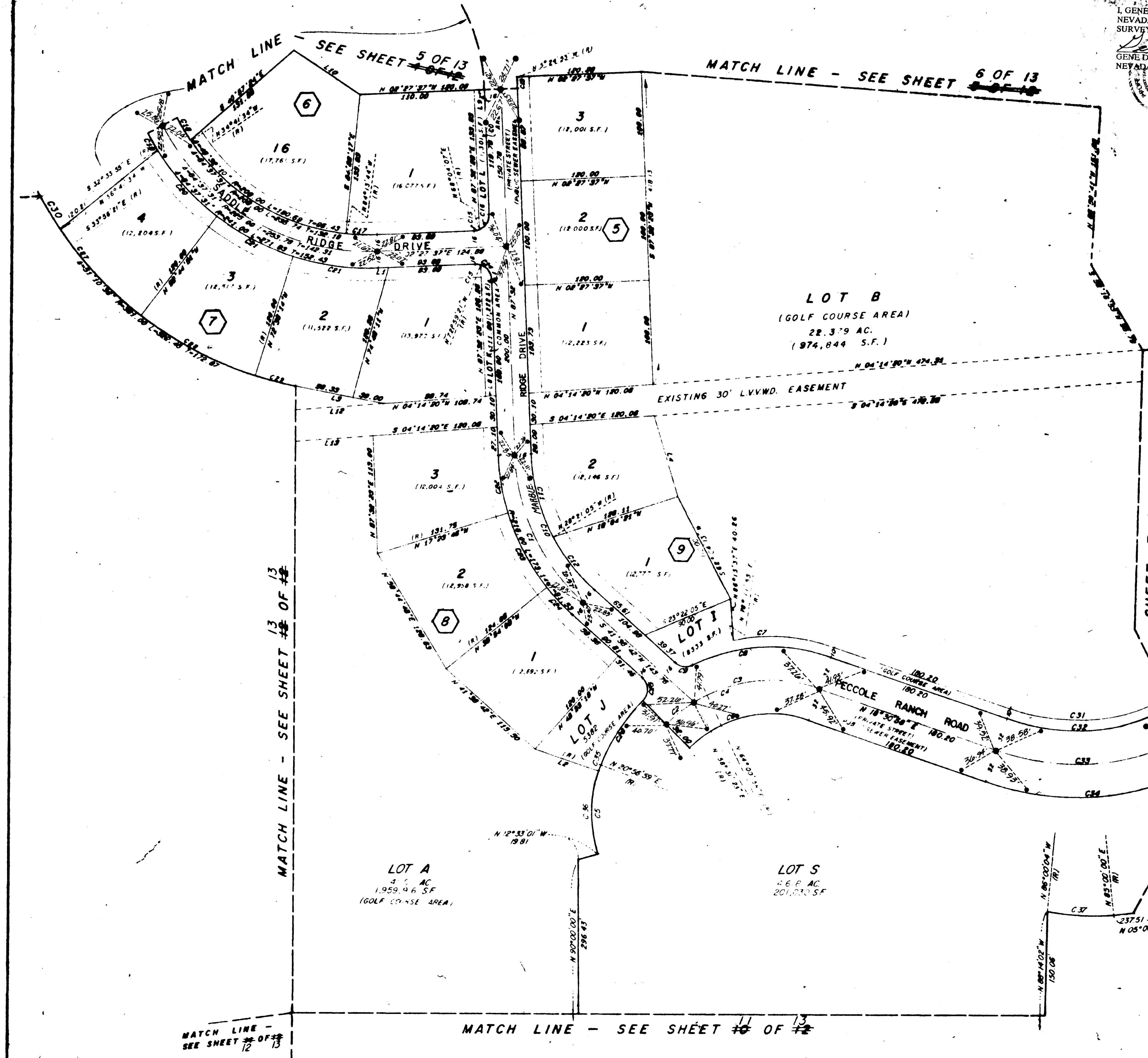
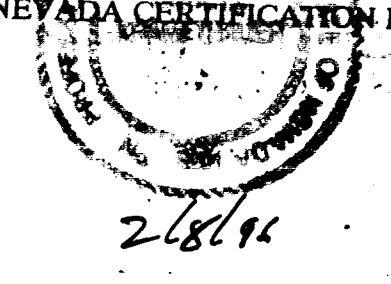
AMENDED PLAT OF FOOTHILLS COUNTRY CLUB UNIT NO. 2

00535

MONUMENTATION TIE MAP

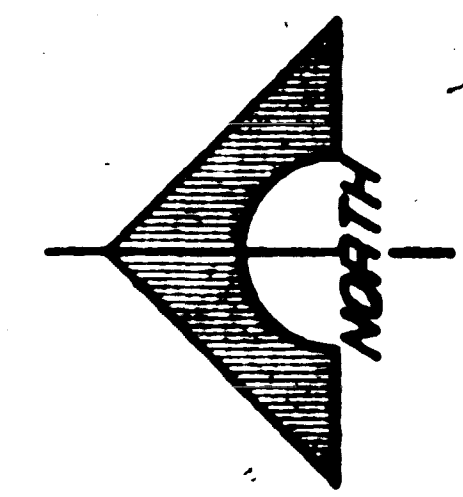
I, GENE D. KRAMETBAUER, A PROFESSIONAL LAND SURVEYOR IN THE STATE OF NEVADA, DO HEREBY CERTIFY THAT THE MONUMENTS HAVE BEEN SET, THIS SURVEY WAS COMPLETED ON 2/18/96

GENE D. KRAMETBAUER, P.L.S.
NEVADA CERTIFICATION NO. 6201



LINE	BEARING	DISTANCE
1	N 02° 27' 37" W	10.00
2	N 10° 22' 37" E (R)	65.00
3	N 10° 00' 10" E	86.39
4	S 75° 14' 50" W	80.74
5	S 41° 30' 40" W	63.00
6	S 06° 38' 48" W	35.30
7	S 06° 38' 48" W	38.00
8	N 04° 14' 20" W	10.00
9	S 02° 27' 37" E	10.00
10	N 53° 20' 44" E	76.71
11	N 44° 20' 30" E	10.00
12	S 04° 14' 20" E	64.80
13	S 04° 14' 20" E	74.80

CURVE	DELTA	RADIUS	LENGTH	TANGENT
1	45° 03' 41"	180.00	84.78	84.78
2	13° 34' 24"	148.00	34.30	17.98
3	48° 25' 34"	145.00	68.88	67.08
4	63° 25' 00"	145.00	100.87	66.88
5	33° 30' 00"	137.00	60.10	41.23
6	63° 33' 00"	113.00	45.37	70.62
7	30° 18' 00"	107.00	44.88	60.88
8	44° 30' 00"	177.00	117.47	78.41
9	87° 53' 44"	18.00	17.70	10.04
10	45° 03' 41"	184.00	147.40	77.87
11	29° 53' 20"	184.00	63.18	46.30
12	20° 02' 13"	184.00	64.38	32.51
13	2° 57' 18"	218.00	11.14	8.87
14	80° 00' 00"	15.00	20.30	15.00
15	18° 20' 18"	15.00	8.10	8.97
16	70° 31' 44"	15.00	18.40	10.61
17	8° 13' 53"	208.00	30.03	15.04
18	8° 51' 00"	208.00	28.01	12.50
19	4° 43' 40"	241.00	18.80	8.88
20	20° 10' 00"	241.00	64.80	46.80
21	19° 51' 23"	241.00	68.30	46.10
22	14° 28' 00"	218.00	60.30	28.32
23	21° 30' 20"	218.00	61.80	41.00
24	8° 00' 10"	218.00	39.70	17.80
25	63° 20' 17"	18.00	24.44	15.30
26	24° 00' 00"	177.00	74.70	37.62
27	14° 01' 50"	301.00	136.00	69.10
28	19° 51' 23"	301.00	123.11	63.19
29	6° 24' 28"	301.00	40.97	20.21
30	11° 00' 00"	301.00	9.00	2.40
31	44° 35' 35"	100.00	47.00	43.00
32	40° 30' 30"	100.00	104.00	87.48
33	44° 35' 35"	100.00	100.00	100.00
34	40° 30' 30"	100.00	200.00	174.32
35	137° 00' 00"	6.00	6.00	3.00
36	30° 55' 30"	137.00	73.00	37.00
37	00° 30' 30"	385.00	60.00	30.30
38	18° 40' 30"	181.00	118.00	59.70
39	04° 04' 04"	161.00	38.48	19.24



7 OF 13
SHEET 5 OF 12

058-1407-2

MATCH LINE - SEE SHEET 12 OF 13

MATCH LINE - SEE SHEET 11 OF 13

2604

