

Book 890313

# AMENDED PLAT OF FOOTHILLS COUNTRY CLUB UNIT NO. 2

00525

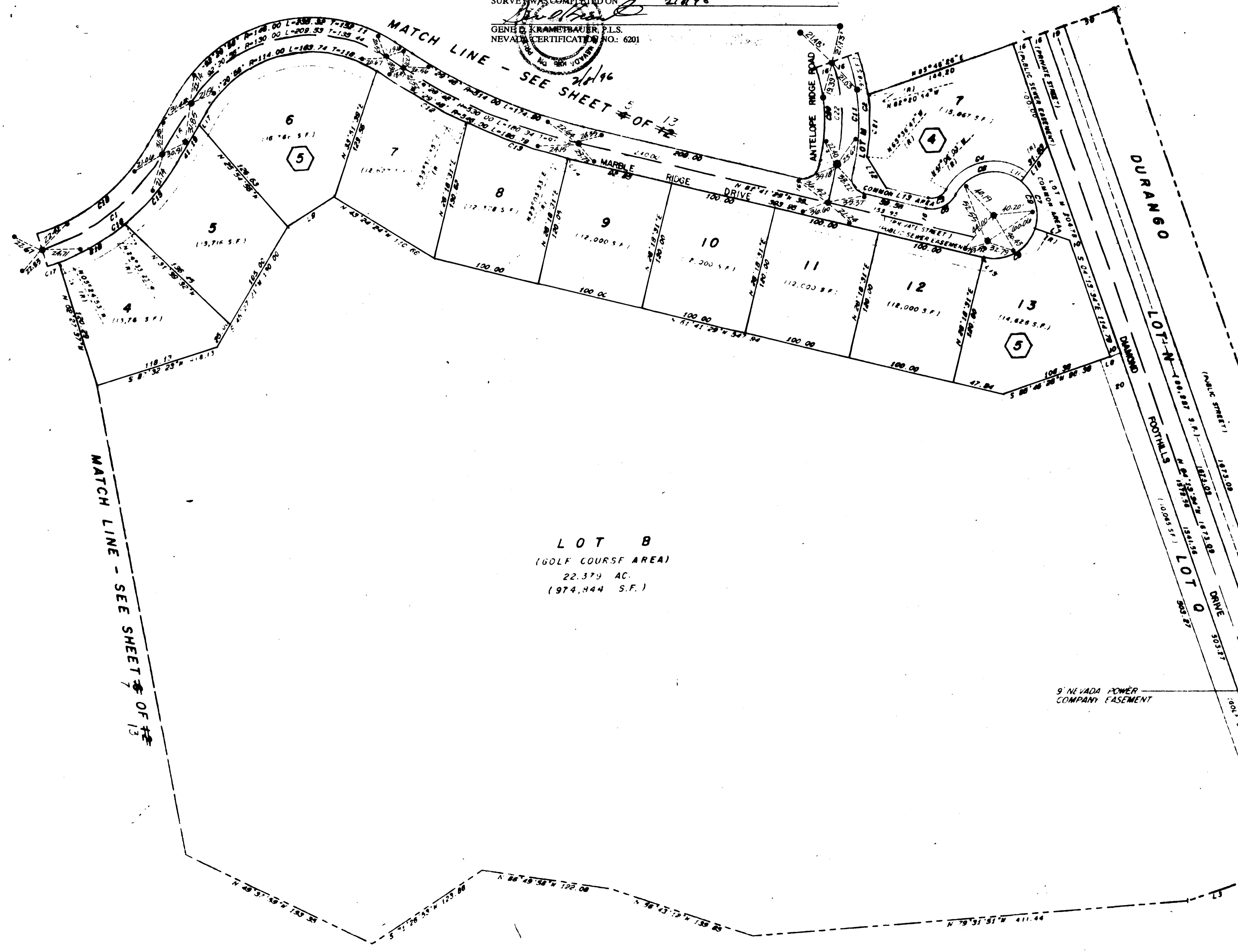
## MONUMENTATION TIE MAP

I, GENE D. KRAMETBAUER, A PROFESSIONAL LAND SURVEYOR IN THE STATE OF NEVADA, DO HEREBY CERTIFY THAT THE MONUMENTS HAVE BEEN SET, THIS SURVEY WAS COMPLETED ON 2/18/96

GENE D. KRAMETBAUER, P.L.S.  
NEVADA CERTIFICATION NO. 6201

LINE	BEARING	DISTANCE
1	N 04° 13' 34" W	84.00
2	S 00° 46' 00" W	55.00
3	S 00° 00' 00" W	70.00
4	S 20° 10' 31" W	24.00
5	N 45° 11' 43" W	18.17
6	S 40° 37' 21" W	24.24
7	S 20° 42' 00" W	24.00
8	S 00° 46' 00" W	10.00
9	S 70° 21' 10" W	23.00
10	S 23° 18' 49" W (R)	45.00
11	S 33° 18' 49" W (R)	10.00
12	S 17° 24' 44" W	36.70
13	S 01° 41' 00" E	40.00
14	N 20° 30' 36" E	4.00
15	S 01° 41' 00" E	1.50
16	N 45° 11' 43" W	18.17
17	N 40° 27' 01" W	13.00
18	S 40° 37' 21" W	18.17
19	N 20° 10' 31" E	5.00
20	N 20° 10' 31" E	36.00

CURVE	DELTA	RADIUS	LENGTH	TANGENT
1	43° 00' 00"	140.00	140.00	70.00
2	20° 30' 47"	100.00	67.00	40.00
3	75° 04' 34"	15.00	18.74	11.00
4	100° 20' 50"	50.00	60.00	60.00
5	75° 04' 34"	30.00	36.00	18.00
6	100° 20' 52"	40.00	70.00	40.00
7	70° 01' 11"	40.00	48.00	60.00
8	75° 04' 34"	40.00	60.00	37.00
9	205° 04' 34"	40.00	100.00	—
10	80° 00' 00"	15.00	23.00	18.00
11	30° 30' 00"	100.00	100.00	84.00
12	8° 10' 40"	540.00	77.00	30.00
13	10° 34' 00"	540.00	100.70	30.00
14	0° 40' 00"	540.00	7.10	3.00
15	18° 00' 18"	210.00	70.00	30.00
16	18° 00' 30"	210.00	72.00	30.00
17	2° 57' 18"	210.00	11.70	8.00
18	48° 08' 02"	210.00	180.00	60.00
19	48° 08' 02"	184.00	135.10	70.00
20	32° 38' 08"	184.00	87.00	44.00
21	16° 44' 07"	184.00	57.26	29.00
22	32° 38' 08"	170.00	94.53	49.41



LOT B  
(GOLF COURSE AREA)  
22,379 AC.  
(974,444 S.F.)

FOOTHILLS COUNTRY CLUB UNIT NO. 2  
BOOK 890313 PAGE 6

6 OF 13  
SHEET 6 OF 13 058-1407-2

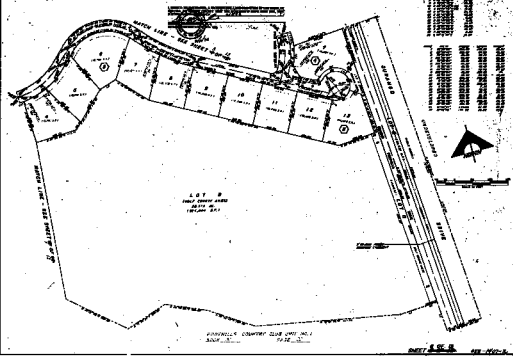
Book 40 Page 4

2605

2nd 1993.13

# AMENDED PLAT OF FOOTHILLS COUNTRY CLUB UNIT NO. 2 MONUMENTATION TE MAP

00320



LOT 2  
FOOTHILLS COUNTRY CLUB  
2017th St  
IRVING, TX

FOOTHILLS COUNTRY CLUB UNIT NO. 2  
BOOK 13 PAGE 13

SHEET 2 OF 2