

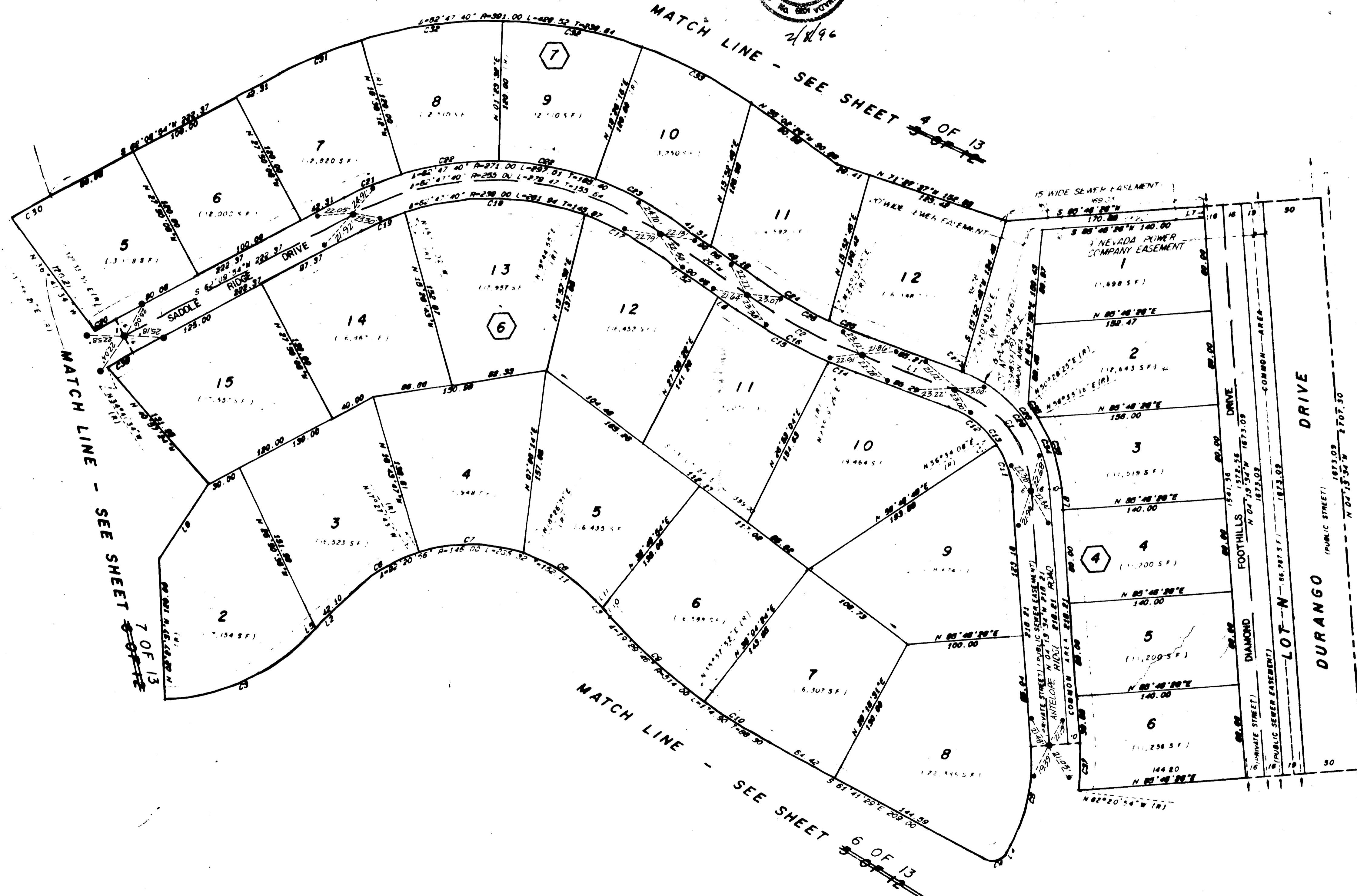
Book 890313

AMENDED PLAT OF FOOTHILLS COUNTRY CLUB UNIT NO. 2 MONUMENTATION TIE MAP

00525

I, GENE D. KRAMETBAUER, A PROFESSIONAL LAND SURVEYOR IN THE STATE OF NEVADA, DO HEREBY CERTIFY THAT THE MONUMENTS HAVE BEEN SET. THIS SURVEY WAS COMPLETED ON 2/18/96

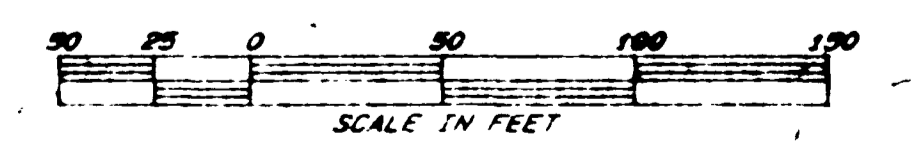
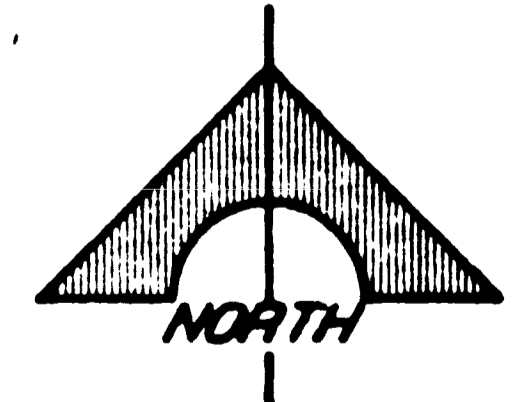
GENE D. KRAMETBAUER, P.L.S.
NEVADA CERTIFICATE NO. 6201



LINE	BEARINGS	DISTANCE
1	N 89° 54' 18" W	89.21
2	N 45° 27' 21" E	54.21
3	S 42° 11' 43" E	18.17
4	N 28° 18' 31" E	5.84
5	S 45° 27' 21" N	12.11
6	S 55° 00' 28" E	18.14
7	S 04° 13' 34" E	10.00
8	N 04° 13' 34" N	18.38
9	N 53° 20' 44" E	78.71
10	N 42° 11' 43" N	10.00
11	N 42° 11' 43" N	8.17

CURVE	DELTA	RADIUS	LENGTH	TANGENT
1	65° 43' 44"	100.00	114.63	64.54
2	14° 51' 52"	433.00	112.33	56.48
3	42° 05' 08"	184.00	135.15	70.78
4	20° 00' 00"	15.00	23.56	15.00
5	32° 38' 03"	154.00	87.45	44.84
6	27° 04' 58"	148.00	89.01	38.16
7	35° 54' 14"	148.00	81.48	47.30
8	28° 21' 48"	148.00	74.82	38.23
9	12° 10' 25"	514.00	108.21	54.81
10	7° 18' 21"	514.00	85.88	32.88
11	29° 12' 18"	84.00	42.82	21.88
12	38° 28' 08"	84.00	53.47	27.88
13	63° 40' 44"	84.00	98.28	54.88
14	3° 13' 42"	448.00	25.31	12.88
15	11° 38' 08"	448.00	91.88	45.75
16	14° 51' 52"	448.00	118.48	58.57
17	15° 18' 38"	288.00	83.45	31.81
18	37° 54' 58"	288.00	128.18	65.18
19	9° 40' 04"	288.00	40.53	20.21
20	4° 43' 48"	341.00	18.88	8.53
21	11° 10' 54"	271.00	52.88	26.53
22	18° 08' 44"	271.00	88.53	43.83
23	15° 31' 18"	271.00	73.48	38.83
24	8° 44' 08"	417.00	78.88	39.51
25	5° 01' 43"	417.00	37.53	18.88
26	14° 51' 52"	417.00	108.18	54.48
27	0° 31' 20"	118.00	1.28	0.83
28	85° 03' 24"	118.00	131.71	73.88
29	85° 40' 44"	118.00	132.87	74.87
30	6° 45' 00"	381.00	4.88	2.47
31	11° 10' 54"	381.00	78.31	38.88
32	18° 02' 44"	381.00	128.15	65.18
33	15° 31' 18"	381.00	108.88	53.28
34	38° 18' 01"	128.00	77.88	40.88
35	6° 08' 51"	128.00	13.48	6.73
36	29° 11' 10"	128.00	64.18	32.88
37	11° 58' 40"	188.00	40.83	20.38
38	8° 51' 28"	288.00	28.04	12.38
39	6° 04' 15"	351.00	58.46	19.25

UNDEVELOPED



2606

