

FOOTHILLS COUNTRY CLUB UNIT NO. 1

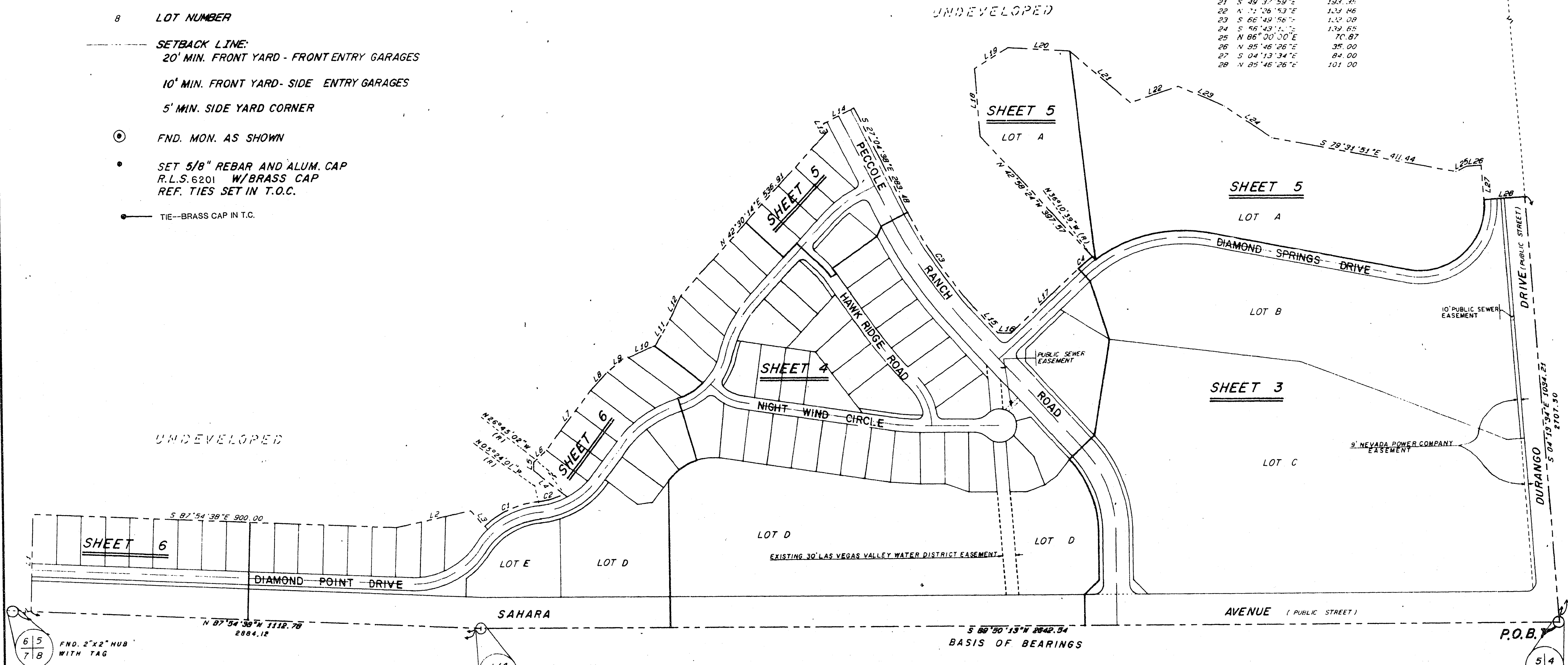
D-I.T.A	RADIUS	LENGTH	TANGENT
1 37°47'17"	226.00	149.05	77.35
2 21°21'01"	174.00	64.84	32.80
3 16°00'24"	1008.00	281.60	141.72
4 6°47'45"	376.00	44.60	22.32

LINE	BEARING	DISTANCE
1	N 02°05'22"E	237.00
2	N 77°28'44"E	186.01
3	S 43°11'18"E	51.38
4	N 52°53'53"W	93.83
5	N 00°39'40"E	19.78
6	N 49°37'40"E	45.00
7	N 37°06'07"E	181.31
8	N 43°06'55"E	60.33
9	N 54°53'32"E	63.01
10	N 67°24'06"E	69.43
11	N 30°27'08"E	74.15
12	N 25°15'12"E	62.83
13	N 27°04'38"W	21.26
14	N 62°55'32"E	84.00
15	S 43°05'02"E	84.99
16	S 88°01'42"E	30.30
17	N 47°01'38"E	229.36
18	N 04°14'00"W	164.12
19	N 58°16'53"E	95.79
20	S 86°50'41"E	151.28
21	S 49°37'59"E	193.35
22	N 71°26'53"E	113.46
23	S 66°49'56"E	112.08
24	S 56°43'11"E	139.65
25	N 86°00'00"E	70.87
26	N 85°46'26"E	35.00
27	S 04°13'34"E	84.00
28	N 85°46'26"E	101.00

MONUMENT TIE MAP

LEGEND

- 2 BLOCK NUMBER
- C4 CURVE NUMBER
- 8 LOT NUMBER
- SETBACK LINE:
20' MIN. FRONT YARD - FRONT ENTRY GARAGES
10' MIN. FRONT YARD - SIDE ENTRY GARAGES
5' MIN. SIDE YARD CORNER
- ⊙ FND. MON. AS SHOWN
- SET 5/8" REBAR AND ALUM. CAP
R.L.S. 6201 W/BRASS CAP
REF. TIES SET IN T.O.C.
- TIE--BRASS CAP IN T.C.



I, GENE D. KRAMETBAUER, A PROFESSIONAL LAND SURVEYOR IN THE STATE OF NEVADA, DO HEREBY CERTIFY THAT THE MONUMENTS HAVE BEEN SET AND THE TIE DISTANCE ESTABLISHED AS SHOWN HEREON. THIS SURVEY WAS COMPLETED ON 1/8/90.

Gene D. Krametbauer
 GENE D. KRAMETBAUER, P.L.S.
 NEVADA SURVEYOR NO.: 6201

