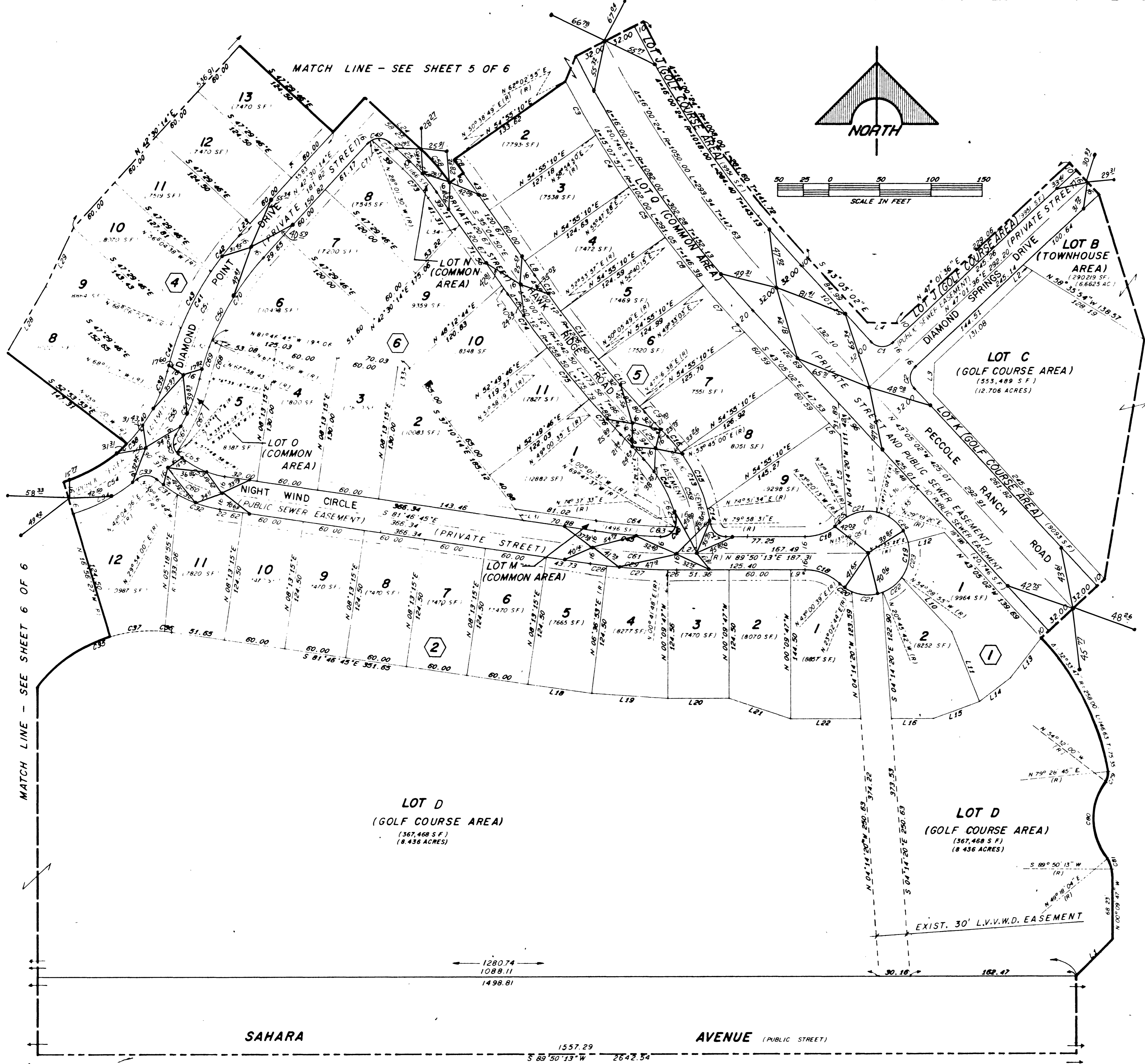


FOOTHILLS COUNTRY CLUB UNIT NO. 1

008



CURVE	DELTA	RADIUS	LENGTH	TANGENT
1	89° 53' 22"	15.00	23.53	14.97
2	90° 06' 38"	15.00	29.59	15.03
3	3° 08' 05"	1102.00	60.29	30.15
4	3° 07' 22"	1102.00	60.06	30.04
5	3° 07' 13"	1102.00	60.01	30.01
6	3° 07' 12"	1102.00	60.01	30.01
7	2° 38' 05"	1102.00	50.67	25.34
8	4° 16' 21"	216.00	15.11	8.06
9	0° 21' 40"	1226.50	7.73	3.87
10	2° 49' 11"	1226.50	60.36	30.19
11	2° 48' 08"	1226.50	59.99	30.00
12	2° 01' 13"	1226.50	43.25	21.63
13	33° 03' 33"	166.00	55.79	49.66
14	5° 05' 52"	166.00	14.82	7.42
15	21° 06' 34"	166.00	61.16	30.93
16	6° 30' 02"	166.00	19.80	9.91
17	80° 08' 18"	15.00	20.98	12.62
18	43° 10' 26"	50.00	37.68	19.78
19	266° 20' 52"	40.50	188.27	49.17
20	19° 57' 55"	40.50	14.11	7.13
21	43° 48' 26"	40.50	30.97	16.28
22	33° 43' 13"	40.50	23.84	12.27
23	50° 35' 49"	40.50	35.76	19.14
24	45° 16' 70"	40.50	32.70	16.89
25	11° 48' 14"	40.50	8.35	4.18
26	0° 16' 35"	576.00	8.54	4.32
27	5° 55' 05"	576.00	59.49	29.77
28	1° 36' 22"	576.00	15.15	8.07
29	8° 23' 02"	576.00	64.28	42.22
30	33° 50' 51"	116.00	68.53	33.30
31	12° 10' 06"	116.00	24.64	12.36
32	21° 40' 45"	116.00	43.89	22.21
33	81° 40' 50"	15.00	21.38	12.97
34	22° 40' 17"	181.00	71.62	36.28
35	61° 07' 08"	139.50	148.81	82.37
36	2° 34' 20"	139.50	7.07	3.54
37	26° 15' 28"	139.50	54.19	27.44
38	59° 44' 38"	149.00	155.29	85.43
39	8° 27' 59"	149.00	22.02	11.03
40	22° 53' 57"	149.00	59.81	30.91
41	29° 09' 30"	296.00	150.64	76.88
42	8° 34' 52"	296.00	44.33	22.21
43	12° 01' 24"	296.00	62.11	31.17
44	8° 33' 14"	296.00	44.19	22.14
45	6° 43' 18"	544.00	63.82	31.95
46	106° 52' 24"	15.00	27.98	20.28
47	27° 42' 35"	134.00	64.81	33.05
48	12° 24' 56"	184.00	39.87	20.01
49	90° 00' 00"	15.00	23.58	15.00
50	29° 09' 30"	264.00	134.35	68.88
51	18° 50' 18"	181.00	59.51	30.23
52	79° 24' 45"	15.00	20.79	12.48
53	34° 33' 02"	84.00	50.65	26.12
54	31° 46' 06"	165.00	91.49	46.85
55	27° 56' 43"	165.00	80.48	41.06
56	59° 42' 49"	165.00	171.96	94.71
57	29° 09' 30"	280.00	142.49	72.83
58	12° 24' 56"	200.00	43.34	21.75
59	42° 55' 15"	150.00	112.37	58.97
60	33° 04' 12"	100.00	57.72	29.69
61	8° 23' 02"	580.00	81.94	41.04
62	35° 34' 50"	15.00	9.31	4.81
63	71° 17' 34"	15.00	18.66	10.76
64	8° 14' 46"	534.00	76.85	38.49
65	10° 57' 52"	15.00	8.87	4.54
66	68° 26' 53"	15.00	17.98	10.20
67	23° 01' 38"	181.00	76.78	38.81
68	9° 13' 50"	254.00	40.92	20.50
69	8° 40' 33"	264.00	39.98	20.03
70	20° 28' 57"	264.00	94.38	47.70
71	19° 28' 18"	15.00	5.10	2.57
72	70° 31' 44"	15.00	18.46	10.83
73	12° 24' 56"	174.00	37.70	18.83
74	2° 58' 51"	1258.50	64.74	32.38
75	2° 57' 41"	1258.50	65.06	32.54
76	2° 58' 39"	1258.50	45.98	23.90
77	15° 40' 14"	40.50	11.08	5.57
78	01° 42' 03"	40.50	1.20	0.60
79	45° 59' 15"	15.00	12.04	6.36
80	76° 09' 56"	60.00	79.76	47.02
81	40° 32' 09"	15.00	10.61	5.54

MATCH LINE - SEE SHEET 3 OF 6

SAHARA

AVENUE (PUBLIC STREET)