

PUBLIC AND PRIVATE SITE ESTIMATE OF QUANTITIES

DESCRIPTION	PUBLIC	PRIVATE
2" ASPHALTIC CONCRETE	0 SY	1,379 SY
3" ASPHALTIC CONCRETE	0 SY	2,327 SY
TYPE I AGGREGATE BASE	0 CY	0 CY
TYPE II AGGREGATE BASE (INCLUDES UNDER SIDEWALK NEXT TO BUILDING)	0 CY	535 CY
TYPE II AGGREGATE BASE (UNDER BUILDING SLAB)	0 CY	187 CY
24" "L" TYPE CURB AND GUTTER	0 LF	815 LF
6" "A" TYPE CURB	0 LF	1,366 LF
4" THICK CONCRETE SIDEWALK	0 SF	5,005 SF
6" CONCRETE VALLEY GUTTER	0 LF	275 SF
COMMERCIAL DRIVEWAY	0 SF	0 SF
2" WIDE SIDEWALK UNDERDRAIN	0 EA	1 EA
HANDICAP RAMP IN SIDEWALK	0 EA	0 EA
3" CONCRETE SWALE	0 SF	530 SF
RAW EXCAVATION (CUT)	0 CY	500 CY
RAW EMBANKMENT (FILL)	0 CY	5,100 CY

NOTE:

THE RAW EARTHWORKS CUT AND FILL VOLUMES ARE BASED UPON THE SITE TOPOGRAPHY WITH THE EXISTING STOCKPILE REMOVED.

EARTHWORKS QUANTITIES SHOWN DO NOT ACCOUNT FOR SITE EARTHWORK LOSSES SUCH AS SHRINKAGE AND SUBSIDENCE AND LOSSES DUE TO THE CLEARING AND GRUBBING OPERATIONS, ETC. IT IS THE RESPONSIBILITY OF THE GENERAL CONTRACTOR TO DETERMINE FINAL EARTHWORK QUANTITIES.

PRIVATE WATER ESTIMATE OF QUANTITIES

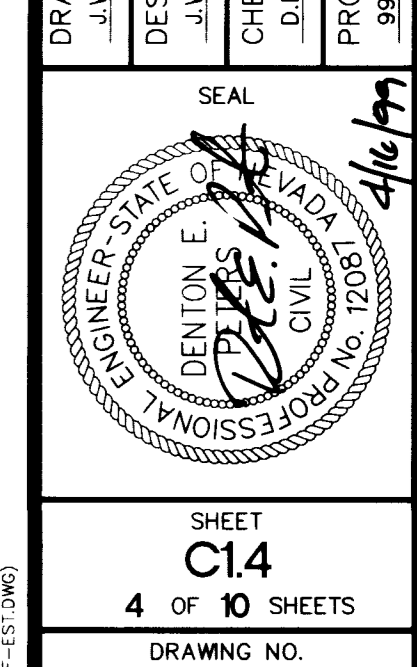
8" PVC WATER MAIN	353 LF±
6" PVC WATER MAIN (FIRE)	257 LF±
4" PVC WATER MAIN (DOM)	53 LF±
2" PVC WATER LATERAL (DOM)	129 LF±
1 1/2" PVC WATER (LANDSCAPE)	2 LF±
STANDARD FIRE HYDRANT ASSEMBLY (FIRE)	3 EA
8"x6"x6" TEE (FIRE)	1 EA
6" 90° BEND (FIRE)	2 EA
8" 90° BEND (FIRE)	4 EA
6" GATE VALVE (FIRE)	1 EA
8"x6" REDUCER (FIRE)	2 EA
8"x8"x6" TEE (FIRE)	2 EA
6" GATE VALVE (FIRE)	4 EA
4" PVC MANIFOLD (DOM)	1 EA
2" CORPORATION STOP (DOM)	2 EA
2" METER (DOM)	2 EA
1 1/2" CORPORATION STOP (LANDSCAPE)	1 EA
1 1/2" METER (LANDSCAPE)	1 EA
1 1/2" RPPA (LANDSCAPE)	1 EA

PRIVATE TRAFFIC ESTIMATE OF QUANTITIES

HANDICAP SIGN	5 EA
STOP SIGN (R1-1)	1 EA

PRIVATE SEWER ESTIMATE OF QUANTITIES

8" PVC SEWER MAIN	78 LF±
4" DIAMETER SEWER MANHOLE	1 EA



SHEET C14
4 OF 10 SHEETS
DRAWING NO. 107-Y 3073

ESTIMATE OF QUANTITIES
HAWTHORN SUITES LTD
SAHARA AVE. AND FORT APACHE ROAD
CITY OF LAS VEGAS, NEVADA

HOSPITALITY ASSOCIATES
EKN ENGINEERING

3809 N SULLIVAN RD. BLDG. 804
SPOKANE, WA 99216
(509) 928-3736
Engineers/Planners/Surveyors
205 East Warm Springs Road Suite 108
LAS VEGAS, NV 89118 (702) 866-6604

REV	DATE	REVISION
1	2/27/99	REVISED QUANTITIES PER VTN'S REVISED UTILITIES

