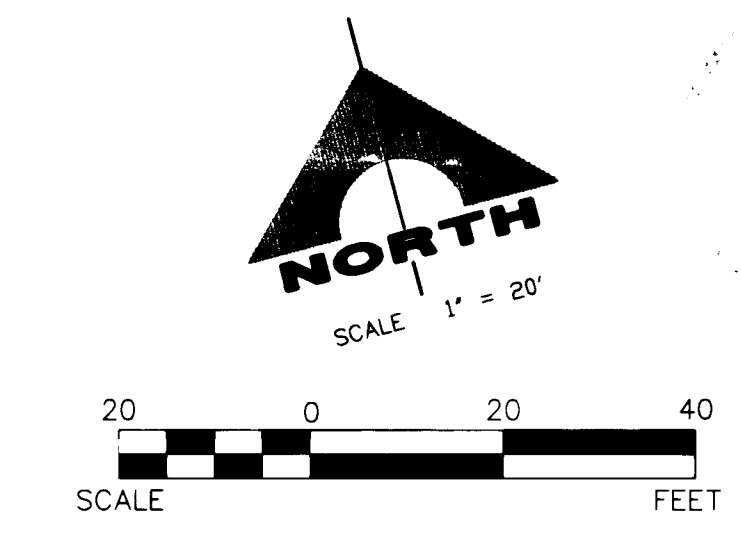
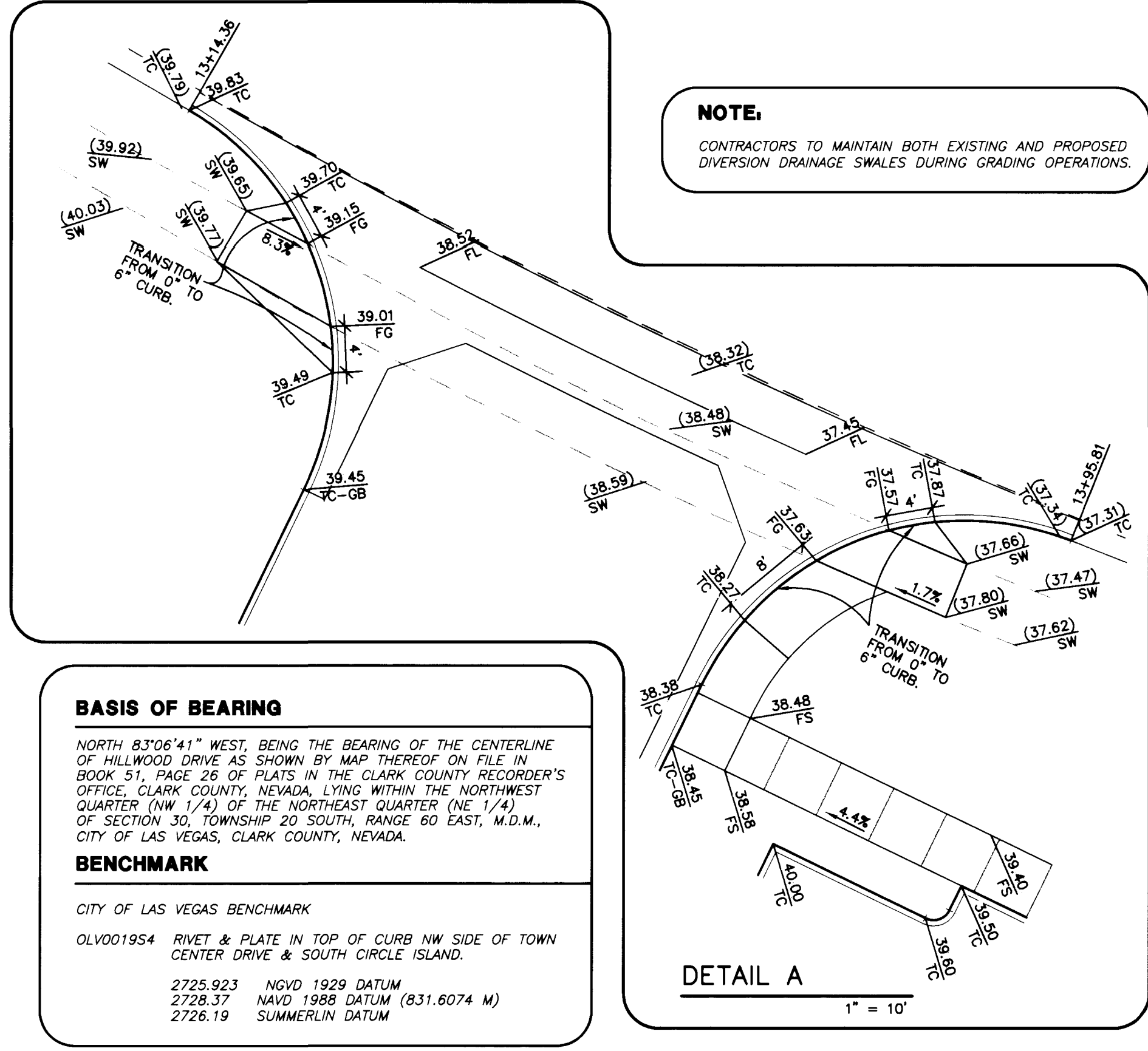


Call before you Dig.
1-800-227-2600
UNDERGROUND SERVICE (USA)

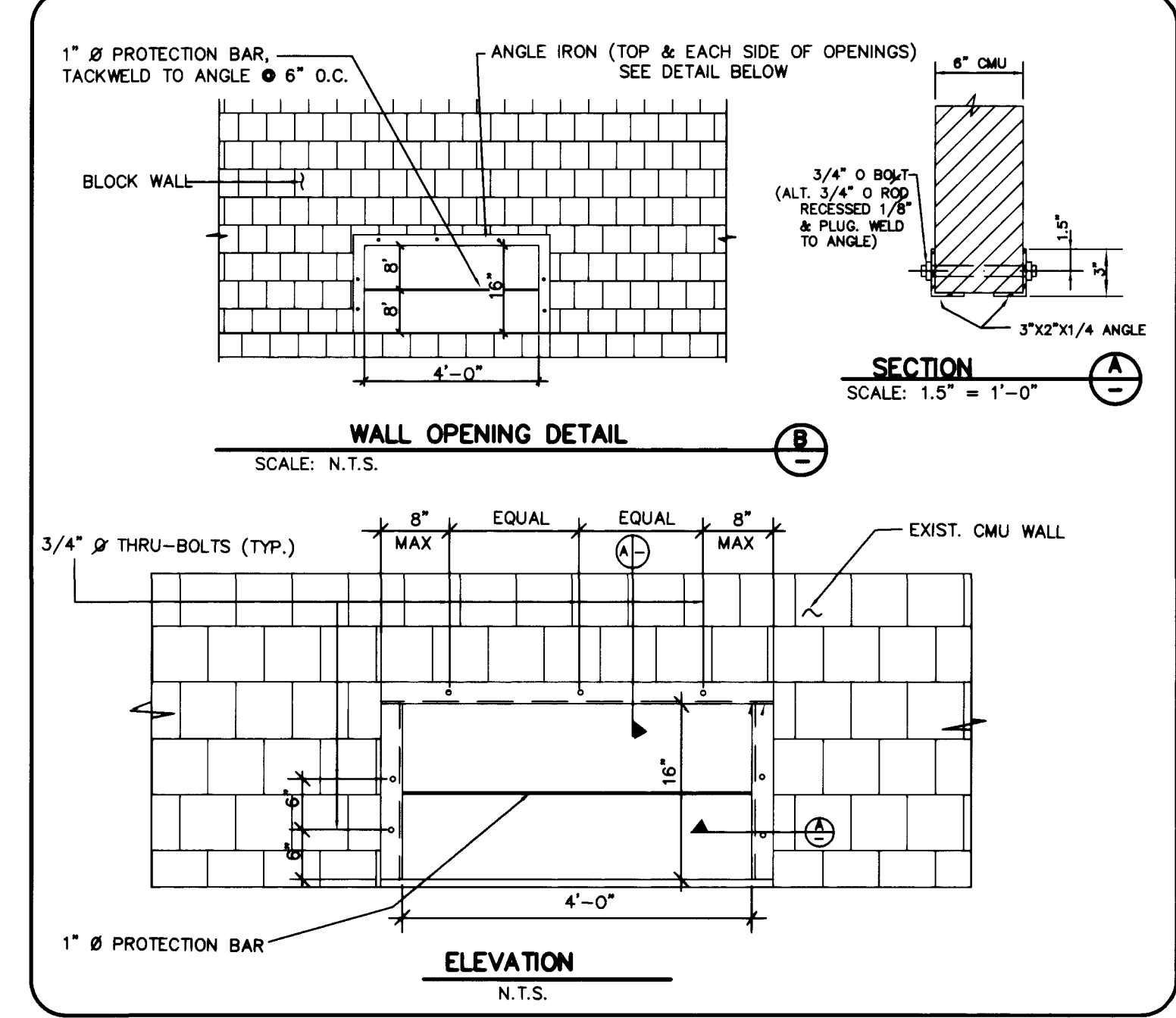


NOTE:
CONTRACTORS TO MAINTAIN BOTH EXISTING AND PROPOSED DIVERSION DRAINAGE SWALES DURING GRADING OPERATIONS.



BASIS OF BEARING
NORTH 83°06'41" WEST, BEING THE BEARING OF THE CENTERLINE OF HILLWOOD DRIVE AS SHOWN BY MAP THEREOF ON FILE IN BOOK 51, PAGE 26 OF PLATS IN THE CLARK COUNTY RECORDER'S OFFICE, CLARK COUNTY, NEVADA, LYING WITHIN THE NORTHWEST QUARTER (NW 1/4) OF THE NORTHEAST QUARTER (NE 1/4) OF SECTION 30, TOWNSHIP 20 SOUTH, RANGE 60 EAST, M.D.M., CITY OF LAS VEGAS, CLARK COUNTY, NEVADA.

BENCHMARK
CITY OF LAS VEGAS BENCHMARK
OLV001954 RIVET & PLATE IN TOP OF CURB NW SIDE OF TOWN CENTER DRIVE & SOUTH CIRCLE ISLAND.
2725.923 NAVD 1929 DATUM
2728.37 NAVD 1988 DATUM (831.6074 M)
2726.19 SUMMERLIN DATUM



- GRADING NOTES**
- CONSTRUCT COMMERCIAL DRIVEWAY & 8" WIDE VALLEY GUTTER, PER SUMMERLIN DWG NO. S-61.
 - CONSTRUCT "L" TYPE CURB PER SUMMERLIN DWG. NO. S-47
 - CONSTRUCT 3" WIDE VALLEY GUTTER PER DETAIL 1 SHEET C-8.
 - CONSTRUCT 2" AC PAVING OVER 4" TYPE II AGGREGATE BASE OVER 12" COMPACTED SUBGRADE PER DETAIL 2 SHEET C-8. SEE SOILS REPORT FOR MORE INFORMATION.
 - CONSTRUCT 3" AC PAVING OVER 6" TYPE II AGGREGATE BASE OVER 12" COMPACTED SUBGRADE PER DETAIL 2 SHEET C-8. SEE SOILS REPORT FOR MORE INFORMATION.
 - CONSTRUCT CONCRETE CHANNEL PER DETAIL 3 SHEET C-8.
 - CONSTRUCT TYPE "A" CURB PER DETAIL 4 SHEET C-8.
 - PROVIDE 3' VALLEY GUTTER TRANSITION.
 - CONSTRUCT SIDEWALK DRAIN PER SUMMERLIN DWG. NO. D-28.
 - CONSTRUCT 4" THICK SIDEWALK PER USD NO. 234 SEE PLAN FOR WIDTH. SEE ALSO ARCH. PLANS FOR EXACT LOCATION, COLOR AND FINISH, AND PER DETAIL 6 SHEET C-8.
 - PROVIDE 3' TRANSITION FROM 0" TO 6" CURB.
 - 0" CURB FLUSH WITH PAVEMENT
 - AND 18" X 18" GRATE PER NDS DRAINAGE PRODUCTS.
 - SAWCUT EXISTING CURB AND GUTTER (C & G) AND MATCH.
 - CONSTRUCT RETAINING WALL PER DETAIL 14 SHEET C-8. SEE STRUCTURAL PLANS FOR MORE DETAIL.
 - CONSTRUCT TRASH ENCLOSURE PER ARCH. PLAN
 - CONSTRUCT LANDSCAPE/WALKWAY UNDERDRAIN PER SUMMERLIN DWG. D-31.
 - ROOF DRAIN. SEE PLUMBING PLANS FOR EXACT LOCATION AND DETAILS
 - HANDICAP ACCESS PATH WITH MAXIMUM SLOPE OF 5% AND MAXIMUM CROSS SLOPE OF 2%
 - INSTALL #3 TYPE L ADAPTOR PER FOUNDRY SERVICE & SUPPLIES, INC.
 - CONSTRUCT 1" WIDE LANDSCAPING SWALE PER DETAIL 5 SHEET C-8.
 - INSTALL #5 TYPE L ADAPTOR PER FOUNDRY SERVICE & SUPPLIES, INC. END OF ADAPTOR MATCH WITH BACK OF EXIST. SIDEWALK. FLOWLINE OF ADAPTOR MATCH WITH FLOWLINE OF EXISTING SIDEWALK UNDERDRAIN.
 - EXISTING SIDEWALK, TREES AND SHRUBS, TO BE REMOVED.
 - CONSTRUCT TYPE "A" DROP INLET PER SUMMERLIN DWG NO. D-12. SEE PLAN FOR "L" AND "D" DIMENSION.
 - CONSTRUCT 48" WIDE BY 16" HIGH WALL OPENING FOR EMERGENCY OVERFLOW PER DETAIL B THIS SHEET.
 - INSTALL 2-8" DIAMETER PIPE UNDER SIDEWALK AND EXTEND 2' BOTH SIDES FOR DRAINAGE.
 - CONSTRUCT 1' SIDE OPENING IN BACK OF DROP INLET FOR DRAINAGE.
 - EXISTING UNDER SIDEWALK DRAIN TO REMAIN.
 - INSTALL TEMPORARY "GOECKE" PAVING.

DATE: 10/26/08
ISSUE DATE: 10/26/08
95% COMPLETE

DESIGN: GDN
DRAWN: JMW
CHECK: JMW
ISSUE DATE: GDN
ISSUE EDITOR: GDN
PLOT DATE: 03-03-99
PLOT TIME: 17:05:05
REV. DATE: 17:05:05
REV. DATE: 17:05:05

G.C. WALLACE, INC.
Engineering/Architecture
1555 SOUTH RANDAZO BLVD./LAS VEGAS, NEVADA 89146
TELEPHONE: 702-734-2000 • FAX: (702) 604-2299
E: 619-262-3440 • WWW: RANDAZO.COM

HILLS/RANDAZO OFFICE COMPLEX
JMA ARCHITECTURE STUDIOS
GRADING PLAN

SHEET
C-7
7 OF 8 SHTS
107-V3052

"I CERTIFY THAT THIS GRADING PLAN IS IN CONFORMANCE WITH THE APPROVED DRAINAGE STUDY ON FILE WITH THE CITY OF LAS VEGAS FOR THIS PROJECT."
John Wallace
LICENSED CIVIL ENGINEER No. 12779
DATE 10/31/08

