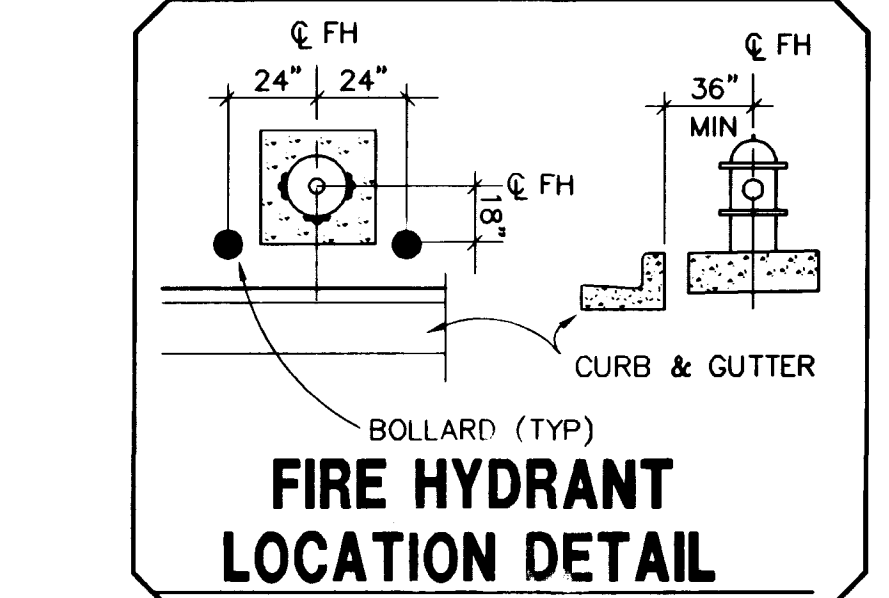


ENGINEER'S NOTES

- CONTRACTOR TO VERIFY LOCATION AND SIZES OF ALL EXISTING UTILITIES PRIOR TO CONSTRUCTION
- SEE MECHANICAL PLANS FOR LOCATIONS, SIZES AND DEPTHS OF ALL ON-SITE UTILITIES AT THE PROPOSED BUILDINGS
- SEE ELECTRICAL PLAN FOR ON-SITE LIGHTING AND POWER SUPPLY
- SEE LANDSCAPE PLANS FOR ON-SITE IRRIGATION
- NOTIFY ENGINEER FOR ANY DISCREPANCIES IMMEDIATELY

FIRE HYDRANT INSTALLATION

FIRE HYDRANT(S) TO BE INSTALLED IN ACCORDANCE WITH THE UDACS STANDARD PLATE NO. 7.



FIRE FLOW CALCULATIONS

THE FIRE FLOW REQUIREMENT IS: 1500 GALLONS PER MINUTE 20 PSI RESIDUAL PRESSURE.

BASED ON:

SQUARE FOOTAGE:	38,751 SF.
LARGEST AREA BETWEEN 4-HOUR AREA SEPARATION WALLS:	14,420 SF.
BUILDING HEIGHT:	35
NUMBER OF STORIES:	1
TYPE OF CONSTRUCTION:	111-N 111-I
OCCUPANCY:	B, S-1, H-4
FULL AUTOMATIC FIRE SPRINKLER SYSTEM:	YES

REVIEWED BY: *[Signature]*
DATE: 3-31-99

NOTE

APPROVAL FOR THE FIRE DEPARTMENT HAVING JURISDICTION IS REQUIRED PRIOR TO OBTAINING FINAL APPROVAL FROM THE LAS VEGAS VALLEY WATER DISTRICT.

APPROVAL

[Signature] 4-25-99
LAS VEGAS VALLEY WATER DISTRICT DATE

[Signature] 3-31-99
CITY OF LAS VEGAS FIRE DEPARTMENT DATE

NO.	DESCRIPTION	DATE	APPD.

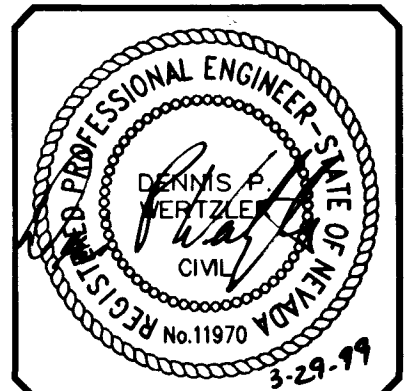
SILVER STATE FORD
2121 E. SAHARA AVENUE
LAS VEGAS, NV 89104
(702) 731-2121

PENTACORE
CIVIL ENGINEERING, PLANNING
CONSTRUCTION MANAGEMENT, ADA CONSULTING
6763 WEST CHARLESTON BOULEVARD
LAS VEGAS, NEVADA 89102 (702) 258-0015

UTILITY PLAN

GAUDIN'S LAS VEGAS
JAGUAR-PORSCHE

MAR 99
DATE: 3-31-99
DRAWN BY: [Signature]
DESIGNED BY: [Signature]
CHECKED BY: [Signature]
JOB NO.: 0248.0010
SCALE: 1"=30'



SHEET **3** OF 9
C.L.V. DWG.# 107-V3047

WATER CONSTRUCTION NOTES

FOR THIS SHEET

	QUANTITIES:	PRIVATE	PUBLIC
1 SAWCUT EX 6" WATER MAIN AS NEEDED AND INSTALL 6" DOUBLE CHECK DETECTOR ASSEMBLY. (FEBCO MODEL 876 OR APPROVED EQUAL)	2 EA.		
2 INSTALL 1-1/2" METER PER UDS PLATE NO. 10 WITH 1-1/2" RPPA PER UDS PLATE NO. 11A.	1 EA.		
3 INSTALL 3/4" PVC WATER DOMESTIC SERVICE (C-900 CL 150) PER UDS PLATE NO. 6A, 6B, & 6C	328.23 LF.		
4 INSTALL 8" PVC FIRE SERVICE (C-900 CL 150) PER UDS PLATE NO. 6A, 6B, & 6C	409.05 LF.		
5 INSTALL 6" PVC FIRE SERVICE (C-900 CL 150) PER UDS PLATE NO. 6A, 6B, & 6C	49.76 LF.		
6 INSTALL FIRE HYDRANT ASSEMBLY, COMPLETE PER U.D.S. PLATE NO. 7. INSTALL BOLLARDS TO PROTECT ON-SITE HYDRANTS WHERE NEEDED. (MAINTAIN CLEARANCES PER FIRE DEPARTMENT)	3 EA.		
7 SAWCUT EX 6" WATER MAIN AS NEEDED AND INSTALL 6" TEE AND GATE VALVE.	3 EA.		
8 REMOVE EXISTING HYDRANT AND ABANDON VALVE PER LVWD STANDARDS	1 EA.		
9 INSTALL 1 1/2" SERVICE SADDLE	1 EA.		
10 8"x 6" REDUCER	4 EA.		

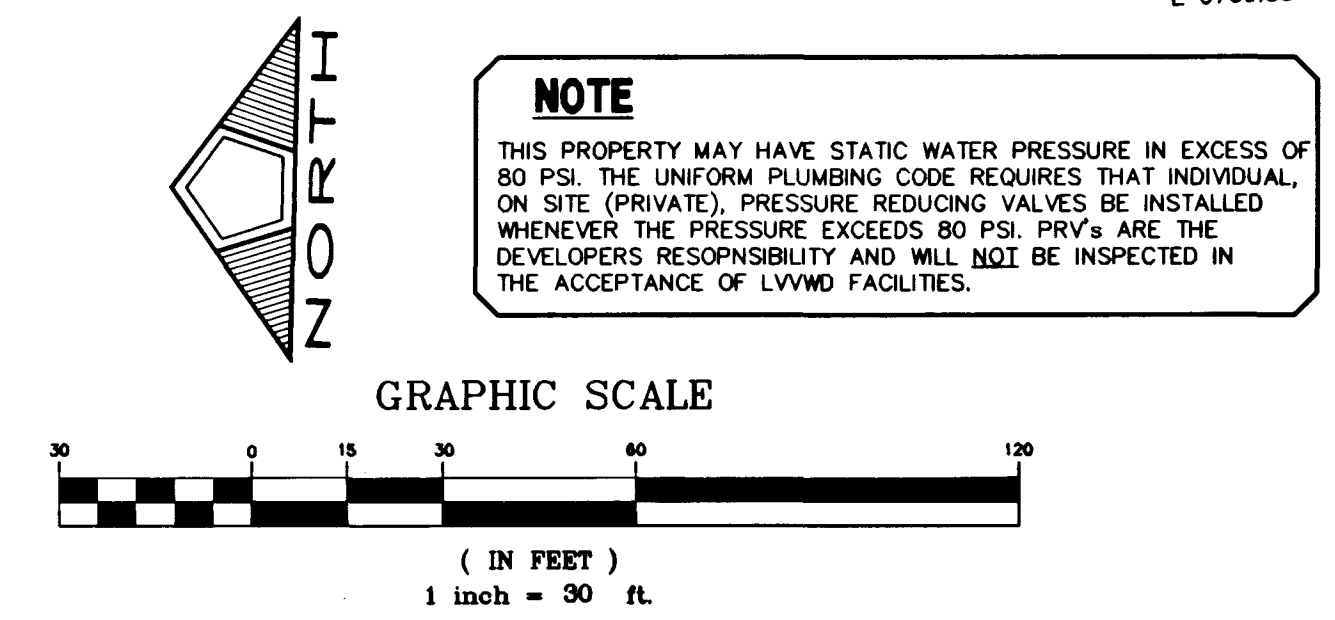
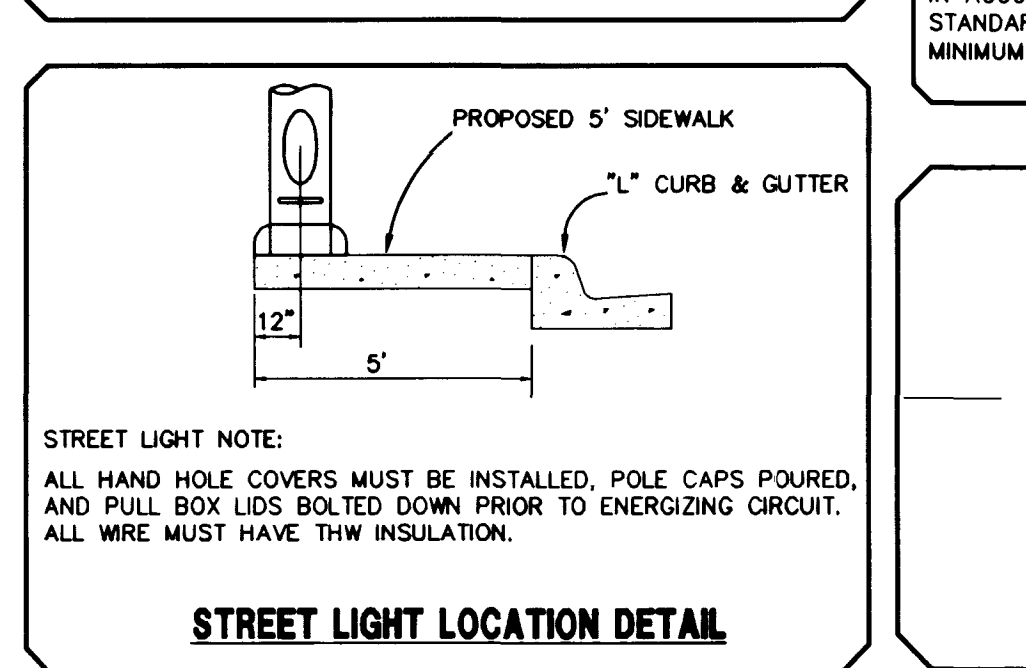
NOTE TO CONTRACTOR:
QUANTITIES SHOWN ARE APPROXIMATIONS ONLY AND ARE INTENDED TO ILLUSTRATE SCOPE OF WORK. THE CONTRACTOR SHALL BE RESPONSIBLE FOR VERIFYING THE EXACT QUANTITIES INVOLVED.

BASIS OF BEARINGS

NORTH 83°28'45" WEST, BEING THE WEST LINE OF THE SOUTHWEST QUARTER (SW 1/4) OF THE SOUTHEAST QUARTER (SE 1/4) OF SECTION 3, TOWNSHIP 21 SOUTH, RANGE 60 EAST, M.D.M., SHOWN IN FILE 80 PAGE 84 OF SURVEYS IN THE OFFICE OF THE CLARK COUNTY RECORDER.

NOTE

PROVIDE ALL CLEANOUTS IN PAVED AREAS WITH VALVE BOXES, TRAFFIC BEARING LIDS AND CONCRETE COLLARS.



NOTE

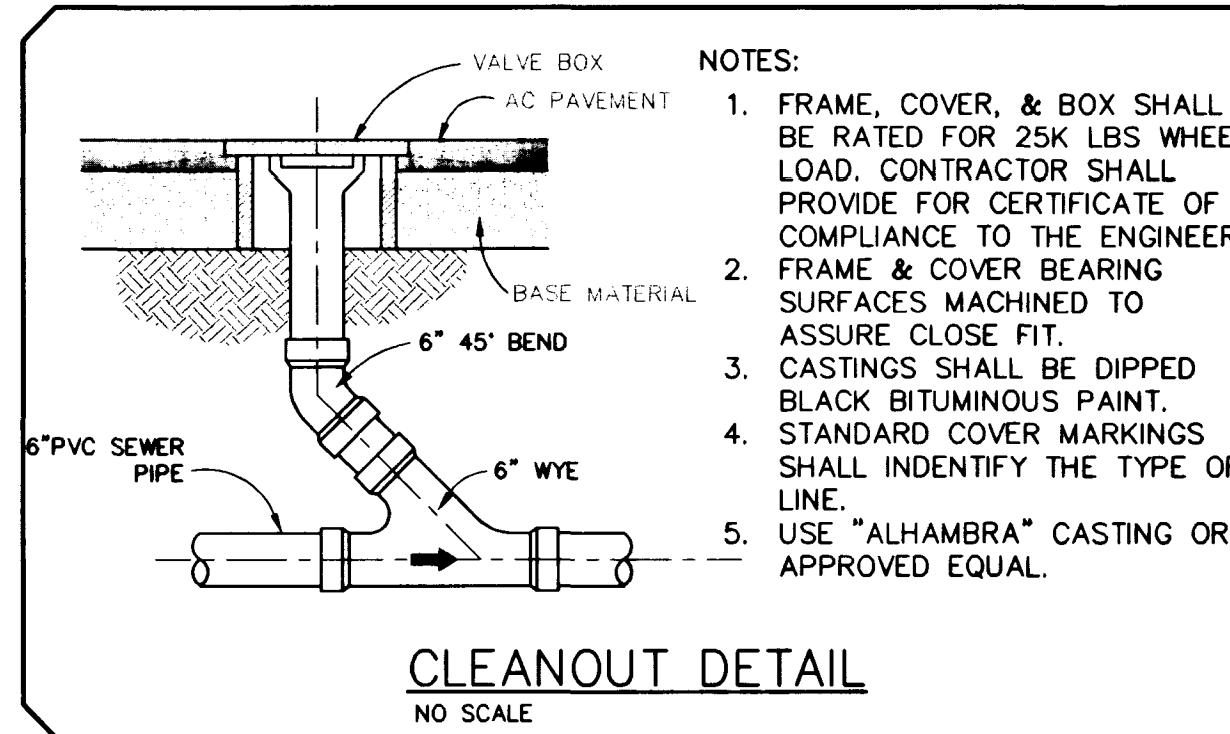
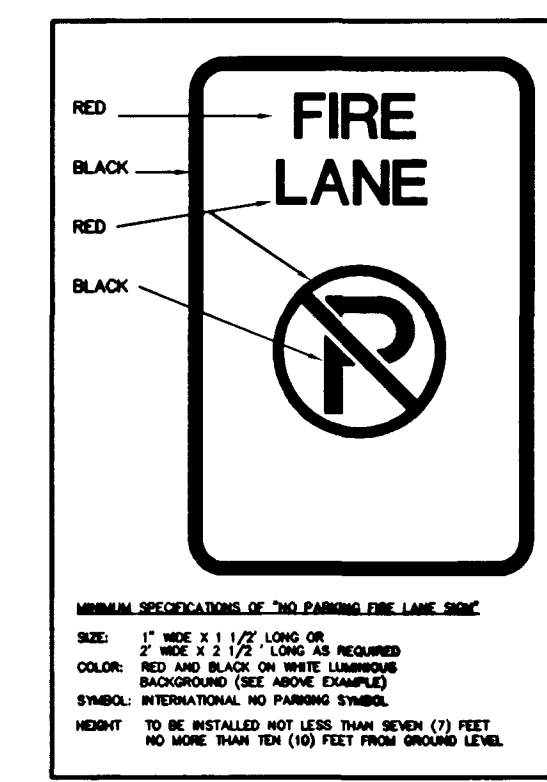
ALL SEWER AND WATER CROSSING SHALL BE CONSTRUCTED IN ACCORDANCE WITH U.D.S. AND THE DESIGN & CONSTRUCTION STANDARDS FOR WASTE WATER COLLECTION TO PROVIDE MINIMUM CLEARANCES.

ST. LT. LEGEND AND QUANTITIES

PROPOSED 1-1/4" PVC CONDUIT	355 LF
PROPOSED SERVICE POINT	1 EA
PROPOSED #3-1/2 CONCRETE PULL BOX W/ METAL COVER	2 EA

NOTE

THIS PROPERTY MAY HAVE STATIC WATER PRESSURE IN EXCESS OF 80 PSI. THE UNIFORM PLUMBING CODE REQUIRES THAT INDIVIDUAL ON-SITE (PRIVATE), PRESSURE REDUCING VALVES BE INSTALLED WHENEVER THE PRESSURE EXCEEDS 80 PSI. PRV'S ARE THE DEVELOPER'S RESPONSIBILITY AND WILL NOT BE INSPECTED IN THE ACCEPTANCE OF LVWD FACILITIES.



REDUCE PRESSURE PRINCIPLE ASSEMBLY (1) 1 1/2"

APPROVED REDUCED PRESSURE PRINCIPLE ASSEMBLY(S) SHALL BE INSTALLED PER THE UDACS PLATE NO. 11A. NO WATER SHALL BE TAKEN FROM A SERVICE REQUIRING BACKFLOW PREVENTION UNTIL THE REDUCED PRESSURE PRINCIPLE ASSEMBLY HAS BEEN SUCCESSFULLY TESTED BY THE LVWD.

ANY BLOCK WALL OR OTHER FENCE MATERIAL SHALL BE DESIGNED AND CONSTRUCTED AROUND THE OUTSIDE OF THE EASEMENT(S) TO ALLOW THE DISTRICT DIRECT ACCESS FROM THE ADJACENT RIGHT-OF-WAY.

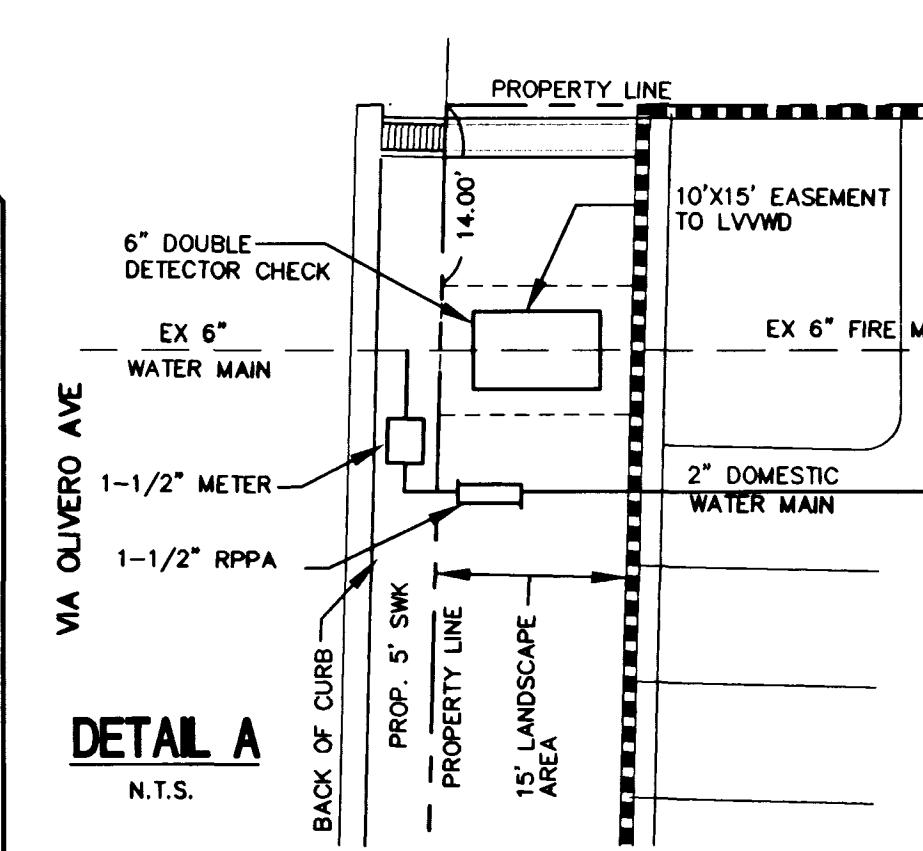
PROJECT NAME: **GAUDIN'S LAS VEGAS JAGUAR-PORSCHE**

This project water plan complies with the Las Vegas Valley Water District's technical requirements. However, this water plan is **NOT APPROVED FOR CONSTRUCTION** at this time and this signature does not provide or imply a water commitment.

[Signature] 3-31-99
DATE

SANITARY SEWER CALCULATION

BASED ON 60 ERU'S
PEAK FLOW = 0.05 MGD
DAILY AVERAGE = 0.015 MGD



INSTALLATION OF DOUBLE CHECK DETECTOR ASSEMBLY (2) 6" - "N" SERIES- FEBCO 876 OR EQUAL

THE DOUBLE CHECK DETECTOR ASSEMBLY SHALL BE INSTALLED IN ACCORDANCE WITH THE UDACS PLATE 20B.

ANY BLOCK WALL OR OTHER FENCE MATERIAL SHALL BE DESIGNED AND CONSTRUCTED AROUND THE OUTSIDE OF THE EASEMENT(S) TO ALLOW THE DISTRICT DIRECT ACCESS FROM THE ADJACENT RIGHT-OF-WAY.

Call before you Dig. 1-800-227-2600

Call before you OVERHEAD 1-702-593-6111

EXISTING UTILITY LOCATIONS SHOWN HEREIN ARE APPROXIMATE ONLY. IT SHALL BE THE CONTRACTOR'S RESPONSIBILITY TO DETERMINE THE EXACT VERTICAL AND HORIZONTAL LOCATION OF ALL EXISTING UNDERGROUND UTILITIES PRIOR TO COMMENCING CONSTRUCTION. NO REPRESENTATION IS MADE THAT ALL EXISTING UTILITIES ARE SHOWN HEREON. THE ENGINEER ASSUMES NO RESPONSIBILITY FOR UTILITIES NOT SHOWN OR UTILITIES NOT SHOWN IN THEIR PROPER LOCATION. CALL BEFORE YOU DIG: 1-800-227-2600.

