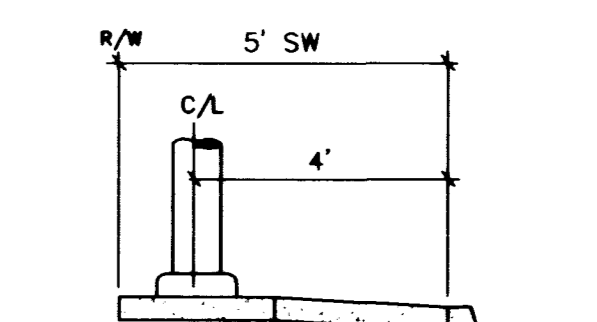
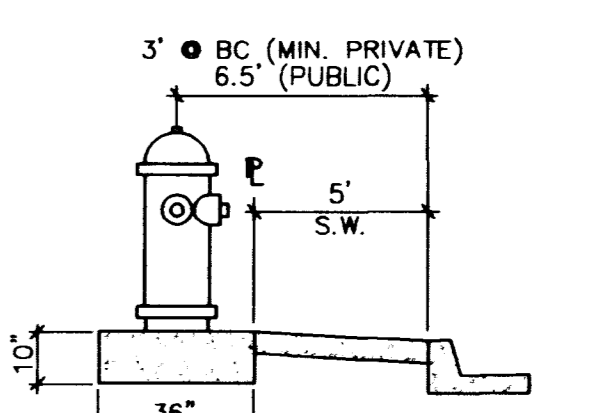


(IN FEET)
1 inch = 30 ft.



STREET LIGHT INSTALLATION



FIRE HYDRANT INSTALLATION

NOTE:
ALL ON-SITE SEWERS ARE PRIVATELY OWNED AND MAINTAINED.

APPROVALS

App. [Signature]
CITY OF MARSHALL 1/27/98 DATE
Bonnie Cliff 1st Approval 1-28-99 2-2-99 DATE
LAS VEGAS VALLEY WATER DISTRICT

LAS VEGAS FIRE DEPARTMENT

FIRE FLOW IS: 3,125 GPM AT 20 PSI RESIDUAL PRESSURE
BASED ON: LARGEST BLDG.
SQUARE FOOTAGE: 51,970 SQ. FT.
SEPARATION WALLS: N/R
BUILDING HEIGHT: 35'
NUMBER OF STORIES: 1
OCCUPANCY: V-N
FULL AUTOMATIC FIRE SYSTEM: YES

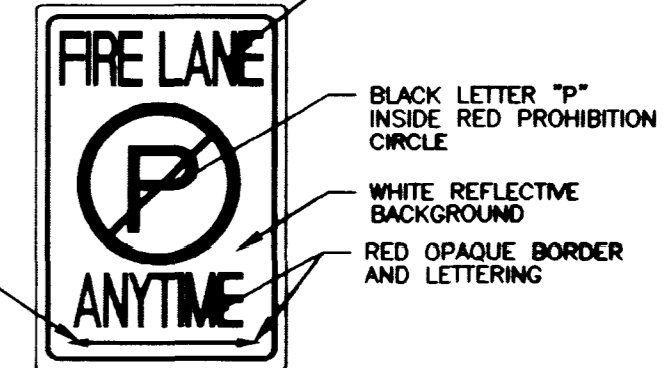
NOTES:

- 1. ALL DIMENSIONS TO UTILITIES ARE TO CENTERLINE OF PIPE BACK OF CURB, PROPERTY LINE, CENTERLINE, & BUILDING LINE, UNLESS NOTED OTHERWISE.
- 2. CONTRACTOR SHALL VERIFY HORIZONTAL AND VERTICAL ALIGNMENT OF EXISTING UTILITIES AND NOTIFY THE DESIGN ENGINEER IMMEDIATELY OF ANY DISCREPANCIES PRIOR TO CONSTRUCTION.
- 3. ALL SEWER AND WATER LATERALS ARE TO BE INSTALLED PER UPC STANDARDS FROM MAIN TO 5' FROM BUILDING.
- 4. ALL EXISTING UTILITY STRUCTURES WITHIN CONSTRUCTION AREA SHALL BE ADJUSTED TO MATCH FINISH GRADE (I.E. W.V. BOX, W.M.I. ANNODE BOX, F.H. TEL BOX, ETC.)
- 5. FOR EXACT BUILDING LATERAL CONNECTION POINTS, SEE PLUMBING PLANS.

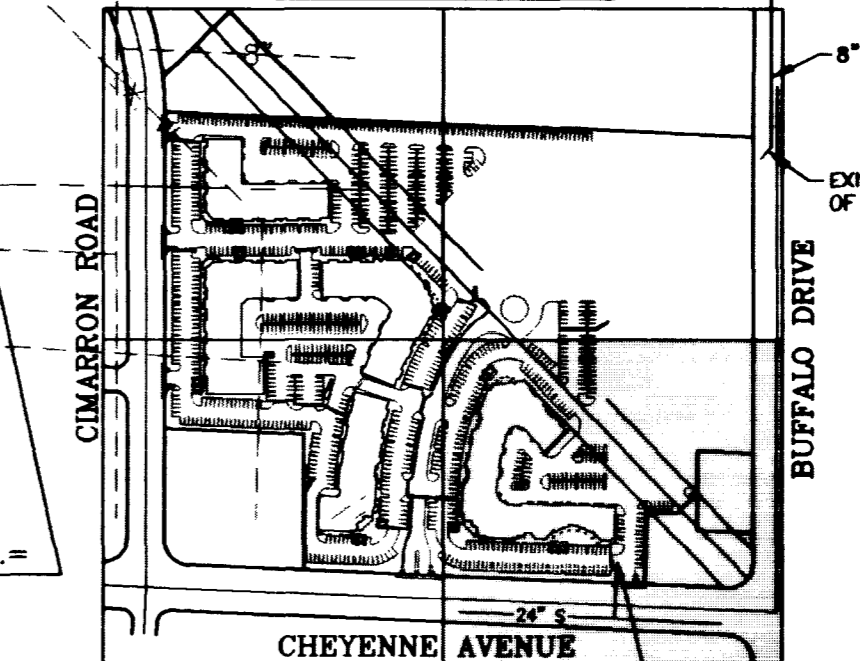
LEGEND:

- CURB PAINTED RED
- 4" HIGH, WHITE PAINTED BLOCK LETTERS "NO PARKING FIRE LANE" ON CURB FACE OR BLOCK WALL & "FIRE LANE" NO PARKING SIGN (SEE DETAIL BELOW) @ 50' O.C. MAX
- RED OPAQUE LETTERING
- BLACK LETTER "P" INSIDE RED PROHIBITION CIRCLE
- WHITE REFLECTIVE BACKGROUND
- RED OPAQUE BORDER AND LETTERING
- USE SINGLE ARROW FOR SIGNS AT END OF FA ZONE (EITHER DIRECTION TO INDICATE DIRECTION OF NO PARKING)

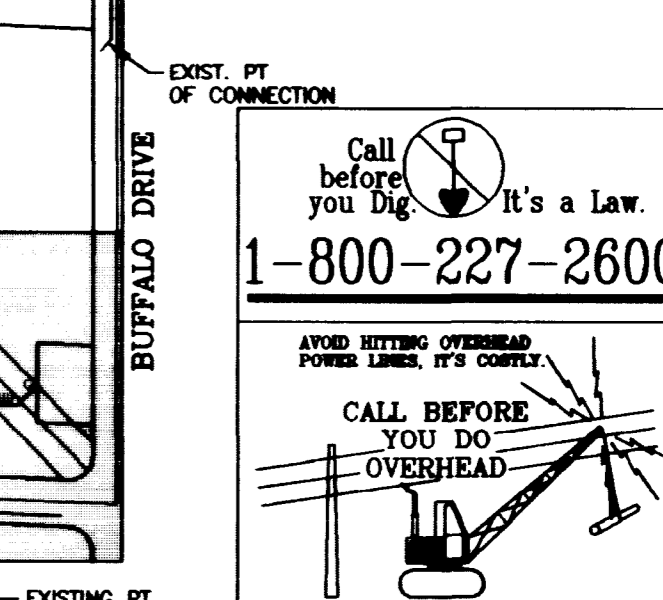
"FIRE LANE" SIGN DETAIL:



SHEET LAYOUT INDEX



SEWER CONNECTION KEY



MATCHLINE SEE SHEET C5

CONSTRUCTION NOTES

- 1. STUB SEWER WITH CLEANOUT
- 2. INSTALL 8" TAPPING SLEEVE & 8" TAPPING VALVE
- 3. 8" x 90° ELBOW
- 4. INSTALL 6" FIRE HYDRANT ASSEMBLY PER U.D.S. PLATE NO. 7
- 5. 6" x 45° BEND
- 6. 8" GATE VALVE
- 7. 8" x 45° BEND
- 8. 8" x 8" x 6" TEE
- 9. 6" x 90° ELBOW
- 10. 6" x 45° BEND
- 11. 8" GATE VALVE
- 12. 6" x 6" x 3" TEE
- 13. 4" DIA. SMH PER CCSD STD DWG NO. SD-1
- 14. SEWER CLEANOUT PER UNIFORM PLUMBING CODE, LATEST EDITION
- 15. 6" GATE VALVE
- 16. 6" x 45° BEND
- 17. 8" GATE VALVE
- 18. 6" x 45° BEND
- 19. 8" x 8" x 6" TEE
- 20. 6" x 90° ELBOW
- 21. 6" x 45° BEND
- 22. 8" GATE VALVE
- 23. 6" x 45° BEND
- 24. 8" x 8" x 6" TEE
- 25. 6" x 90° ELBOW
- 26. 4" DIA. SMH PER CCSD STD DWG NO. SD-1
- 27. SEWER CLEANOUT PER UNIFORM PLUMBING CODE, LATEST EDITION
- 28. 6" GATE VALVE
- 29. 6" x 45° BEND
- 30. 8" x 8" x 6" TEE
- 31. 6" x 90° ELBOW
- 32. 4" DIA. SMH PER CCSD STD DWG NO. SD-1
- 33. SEWER CLEANOUT PER UNIFORM PLUMBING CODE, LATEST EDITION
- 34. 6" GATE VALVE
- 35. 6" x 45° BEND
- 36. 8" x 8" x 6" TEE
- 37. 6" x 90° ELBOW
- 38. 4" DIA. SMH PER CCSD STD DWG NO. SD-1
- 39. SEWER CLEANOUT PER UNIFORM PLUMBING CODE, LATEST EDITION
- 40. 6" GATE VALVE
- 41. 6" x 45° BEND
- 42. 8" x 8" x 6" TEE
- 43. 6" x 90° ELBOW
- 44. 4" DIA. SMH PER CCSD STD DWG NO. SD-1
- 45. SEWER CLEANOUT PER UNIFORM PLUMBING CODE, LATEST EDITION
- 46. 6" GATE VALVE
- 47. 6" x 45° BEND
- 48. 8" x 8" x 6" TEE
- 49. 6" x 90° ELBOW
- 50. 4" DIA. SMH PER CCSD STD DWG NO. SD-1
- 51. SEWER CLEANOUT PER UNIFORM PLUMBING CODE, LATEST EDITION
- 52. 6" GATE VALVE
- 53. 6" x 45° BEND
- 54. 8" x 8" x 6" TEE
- 55. 6" x 90° ELBOW
- 56. 4" DIA. SMH PER CCSD STD DWG NO. SD-1
- 57. SEWER CLEANOUT PER UNIFORM PLUMBING CODE, LATEST EDITION
- 58. 6" GATE VALVE
- 59. 6" x 45° BEND
- 60. 8" x 8" x 6" TEE
- 61. 6" x 90° ELBOW
- 62. 4" DIA. SMH PER CCSD STD DWG NO. SD-1
- 63. SEWER CLEANOUT PER UNIFORM PLUMBING CODE, LATEST EDITION
- 64. 6" GATE VALVE
- 65. 6" x 45° BEND
- 66. 8" x 8" x 6" TEE
- 67. 6" x 90° ELBOW
- 68. 4" DIA. SMH PER CCSD STD DWG NO. SD-1
- 69. SEWER CLEANOUT PER UNIFORM PLUMBING CODE, LATEST EDITION
- 70. 6" GATE VALVE
- 71. 6" x 45° BEND
- 72. 8" x 8" x 6" TEE
- 73. 6" x 90° ELBOW
- 74. 4" DIA. SMH PER CCSD STD DWG NO. SD-1
- 75. SEWER CLEANOUT PER UNIFORM PLUMBING CODE, LATEST EDITION
- 76. 6" GATE VALVE
- 77. 6" x 45° BEND
- 78. 8" x 8" x 6" TEE
- 79. 6" x 90° ELBOW
- 80. 4" DIA. SMH PER CCSD STD DWG NO. SD-1
- 81. SEWER CLEANOUT PER UNIFORM PLUMBING CODE, LATEST EDITION
- 82. 6" GATE VALVE
- 83. 6" x 45° BEND
- 84. 8" x 8" x 6" TEE
- 85. 6" x 90° ELBOW
- 86. 4" DIA. SMH PER CCSD STD DWG NO. SD-1
- 87. SEWER CLEANOUT PER UNIFORM PLUMBING CODE, LATEST EDITION
- 88. 6" GATE VALVE
- 89. 6" x 45° BEND
- 90. 8" x 8" x 6" TEE
- 91. 6" x 90° ELBOW
- 92. 4" DIA. SMH PER CCSD STD DWG NO. SD-1
- 93. SEWER CLEANOUT PER UNIFORM PLUMBING CODE, LATEST EDITION
- 94. 6" GATE VALVE
- 95. 6" x 45° BEND
- 96. 8" x 8" x 6" TEE
- 97. 6" x 90° ELBOW
- 98. 4" DIA. SMH PER CCSD STD DWG NO. SD-1
- 99. SEWER CLEANOUT PER UNIFORM PLUMBING CODE, LATEST EDITION
- 100. 6" GATE VALVE
- 101. 6" x 45° BEND
- 102. 8" x 8" x 6" TEE
- 103. 6" x 90° ELBOW
- 104. 4" DIA. SMH PER CCSD STD DWG NO. SD-1
- 105. SEWER CLEANOUT PER UNIFORM PLUMBING CODE, LATEST EDITION
- 106. 6" GATE VALVE
- 107. 6" x 45° BEND
- 108. 8" x 8" x 6" TEE
- 109. 6" x 90° ELBOW
- 110. 4" DIA. SMH PER CCSD STD DWG NO. SD-1
- 111. SEWER CLEANOUT PER UNIFORM PLUMBING CODE, LATEST EDITION
- 112. 6" GATE VALVE
- 113. 6" x 45° BEND
- 114. 8" x 8" x 6" TEE
- 115. 6" x 90° ELBOW
- 116. 4" DIA. SMH PER CCSD STD DWG NO. SD-1
- 117. SEWER CLEANOUT PER UNIFORM PLUMBING CODE, LATEST EDITION
- 118. 6" GATE VALVE
- 119. 6" x 45° BEND
- 120. 8" x 8" x 6" TEE
- 121. 6" x 90° ELBOW
- 122. 4" DIA. SMH PER CCSD STD DWG NO. SD-1
- 123. SEWER CLEANOUT PER UNIFORM PLUMBING CODE, LATEST EDITION
- 124. 6" GATE VALVE
- 125. 6" x 45° BEND
- 126. 8" x 8" x 6" TEE
- 127. 6" x 90° ELBOW
- 128. 4" DIA. SMH PER CCSD STD DWG NO. SD-1
- 129. SEWER CLEANOUT PER UNIFORM PLUMBING CODE, LATEST EDITION
- 130. 6" GATE VALVE
- 131. 6" x 45° BEND
- 132. 8" x 8" x 6" TEE
- 133. 6" x 90° ELBOW
- 134. 4" DIA. SMH PER CCSD STD DWG NO. SD-1
- 135. SEWER CLEANOUT PER UNIFORM PLUMBING CODE, LATEST EDITION
- 136. 6" GATE VALVE
- 137. 6" x 45° BEND
- 138. 8" x 8" x 6" TEE
- 139. 6" x 90° ELBOW
- 140. 4" DIA. SMH PER CCSD STD DWG NO. SD-1
- 141. SEWER CLEANOUT PER UNIFORM PLUMBING CODE, LATEST EDITION
- 142. 6" GATE VALVE
- 143. 6" x 45° BEND
- 144. 8" x 8" x 6" TEE
- 145. 6" x 90° ELBOW
- 146. 4" DIA. SMH PER CCSD STD DWG NO. SD-1
- 147. SEWER CLEANOUT PER UNIFORM PLUMBING CODE, LATEST EDITION
- 148. 6" GATE VALVE
- 149. 6" x 45° BEND
- 150. 8" x 8" x 6" TEE
- 151. 6" x 90° ELBOW
- 152. 4" DIA. SMH PER CCSD STD DWG NO. SD-1
- 153. SEWER CLEANOUT PER UNIFORM PLUMBING CODE, LATEST EDITION
- 154. 6" GATE VALVE
- 155. 6" x 45° BEND
- 156. 8" x 8" x 6" TEE
- 157. 6" x 90° ELBOW
- 158. 4" DIA. SMH PER CCSD STD DWG NO. SD-1
- 159. SEWER CLEANOUT PER UNIFORM PLUMBING CODE, LATEST EDITION
- 160. 6" GATE VALVE
- 161. 6" x 45° BEND
- 162. 8" x 8" x 6" TEE
- 163. 6" x 90° ELBOW
- 164. 4" DIA. SMH PER CCSD STD DWG NO. SD-1
- 165. SEWER CLEANOUT PER UNIFORM PLUMBING CODE, LATEST EDITION
- 166. 6" GATE VALVE
- 167. 6" x 45° BEND
- 168. 8" x 8" x 6" TEE
- 169. 6" x 90° ELBOW
- 170. 4" DIA. SMH PER CCSD STD DWG NO. SD-1
- 171. SEWER CLEANOUT PER UNIFORM PLUMBING CODE, LATEST EDITION
- 172. 6" GATE VALVE
- 173. 6" x 45° BEND
- 174. 8" x 8" x 6" TEE
- 175. 6" x 90° ELBOW
- 176. 4" DIA. SMH PER CCSD STD DWG NO. SD-1
- 177. SEWER CLEANOUT PER UNIFORM PLUMBING CODE, LATEST EDITION
- 178. 6" GATE VALVE
- 179. 6" x 45° BEND
- 180. 8" x 8" x 6" TEE
- 181. 6" x 90° ELBOW
- 182. 4" DIA. SMH PER CCSD STD DWG NO. SD-1
- 183. SEWER CLEANOUT PER UNIFORM PLUMBING CODE, LATEST EDITION
- 184. 6" GATE VALVE
- 185. 6" x 45° BEND
- 186. 8" x 8" x 6" TEE
- 187. 6" x 90° ELBOW
- 188. 4" DIA. SMH PER CCSD STD DWG NO. SD-1
- 189. SEWER CLEANOUT PER UNIFORM PLUMBING CODE, LATEST EDITION
- 190. 6" GATE VALVE
- 191. 6" x 45° BEND
- 192. 8" x 8" x 6" TEE
- 193. 6" x 90° ELBOW
- 194. 4" DIA. SMH PER CCSD STD DWG NO. SD-1
- 195. SEWER CLEANOUT PER UNIFORM PLUMBING CODE, LATEST EDITION
- 196. 6" GATE VALVE
- 197. 6" x 45° BEND
- 198. 8" x 8" x 6" TEE
- 199. 6" x 90° ELBOW
- 200. 4" DIA. SMH PER CCSD STD DWG NO. SD-1
- 201. SEWER CLEANOUT PER UNIFORM PLUMBING CODE, LATEST EDITION
- 202. 6" GATE VALVE
- 203. 6" x 45° BEND
- 204. 8" x 8" x 6" TEE
- 205. 6" x 90° ELBOW
- 206. 4" DIA. SMH PER CCSD STD DWG NO. SD-1
- 207. SEWER CLEANOUT PER UNIFORM PLUMBING CODE, LATEST EDITION
- 208. 6" GATE VALVE
- 209. 6" x 45° BEND
- 210. 8" x 8" x 6" TEE
- 211. 6" x 90° ELBOW
- 212. 4" DIA. SMH PER CCSD STD DWG NO. SD-1
- 213. SEWER CLEANOUT PER UNIFORM PLUMBING CODE, LATEST EDITION
- 214. 6" GATE VALVE
- 215. 6" x 45° BEND
- 216. 8" x 8" x 6" TEE
- 217. 6" x 90° ELBOW
- 218. 4" DIA. SMH PER CCSD STD DWG NO. SD-1
- 219. SEWER CLEANOUT PER UNIFORM PLUMBING CODE, LATEST EDITION
- 220. 6" GATE VALVE
- 221. 6" x 45° BEND
- 222. 8" x 8" x 6" TEE
- 223. 6" x 90° ELBOW
- 224. 4" DIA. SMH PER CCSD STD DWG NO. SD-1
- 225. SEWER CLEANOUT PER UNIFORM PLUMBING CODE, LATEST EDITION
- 226. 6" GATE VALVE
- 227. 6" x 45° BEND
- 228. 8" x 8" x 6" TEE
- 229. 6" x 90° ELBOW
- 230. 4" DIA. SMH PER CCSD STD DWG NO. SD-1
- 231. SEWER CLEANOUT PER UNIFORM PLUMBING CODE, LATEST EDITION
- 232. 6" GATE VALVE
- 233. 6" x 45° BEND
- 234. 8" x 8" x 6" TEE
- 235. 6" x 90° ELBOW
- 236. 4" DIA. SMH PER CCSD STD DWG NO. SD-1
- 237. SEWER CLEANOUT PER UNIFORM PLUMBING CODE, LATEST EDITION
- 238. 6" GATE VALVE
- 239. 6" x 45° BEND
- 240. 8" x 8" x 6" TEE
- 241. 6" x 90° ELBOW
- 242. 4" DIA. SMH PER CCSD STD DWG NO. SD-1
- 243. SEWER CLEANOUT PER UNIFORM PLUMBING CODE, LATEST EDITION
- 244. 6" GATE VALVE
- 245. 6" x 45° BEND
- 246. 8" x 8" x 6" TEE
- 247. 6" x 90° ELBOW
- 248. 4" DIA. SMH PER CCSD STD DWG NO. SD-1
- 249. SEWER CLEANOUT PER UNIFORM PLUMBING CODE, LATEST EDITION
- 250. 6" GATE VALVE
- 251. 6" x 45° BEND
- 252. 8" x 8" x 6" TEE
- 253. 6" x 90° ELBOW
- 254. 4" DIA. SMH PER CCSD STD DWG NO. SD-1
- 255. SEWER CLEANOUT PER UNIFORM PLUMBING CODE, LATEST EDITION
- 256. 6" GATE VALVE
- 257. 6" x 45° BEND
- 258. 8" x 8" x 6" TEE
- 259. 6" x 90° ELBOW
- 260. 4" DIA. SMH PER CCSD STD DWG NO. SD-1
- 261. SEWER CLEANOUT PER UNIFORM PLUMBING CODE, LATEST EDITION
- 262. 6" GATE VALVE
- 263. 6" x 45° BEND
- 264. 8" x 8" x 6" TEE
- 265. 6" x 90° ELBOW
- 266. 4" DIA. SMH PER CCSD STD DWG NO. SD-1
- 267. SEWER CLEANOUT PER UNIFORM PLUMBING CODE, LATEST EDITION
- 268. 6" GATE VALVE
- 269. 6" x 45° BEND
- 270. 8" x 8" x 6" TEE
- 271. 6" x 90° ELBOW
- 272. 4" DIA. SMH PER CCSD STD DWG NO. SD-1
- 273. SEWER CLEANOUT PER UNIFORM PLUMBING CODE, LATEST EDITION
- 274. 6" GATE VALVE
- 275. 6" x 45° BEND
- 276. 8" x 8" x 6" TEE
- 277. 6" x 90° ELBOW
- 278. 4" DIA. SMH PER CCSD STD DWG NO. SD-1
- 279. SEWER CLEANOUT PER UNIFORM PLUMBING CODE, LATEST EDITION
- 280. 6" GATE VALVE
- 281. 6" x 45° BEND
- 282. 8" x 8" x 6" TEE
- 283. 6" x 90° ELBOW
- 284. 4" DIA. SMH PER CCSD STD DWG NO. SD-1
- 285. SEWER CLEANOUT PER UNIFORM PLUMBING CODE, LATEST EDITION
- 286. 6" GATE VALVE
- 287. 6" x 45° BEND
- 288. 8" x 8" x 6" TEE
- 289. 6" x 90° ELBOW
- 290. 4" DIA. SMH PER CCSD STD DWG NO. SD-1
- 291. SEWER CLEANOUT PER UNIFORM PLUMBING CODE, LATEST EDITION
- 292. 6" GATE VALVE
- 293. 6" x 45° BEND
- 294. 8" x 8" x 6" TEE
- 295. 6" x 90° ELBOW
- 296. 4" DIA. SMH PER CCSD STD DWG NO. SD-1
- 297. SEWER CLEANOUT PER UNIFORM PLUMBING CODE, LATEST EDITION
- 298. 6" GATE VALVE
- 299. 6" x 45° BEND
- 300. 8" x 8" x 6" TEE
- 301. 6" x 90° ELBOW
- 302. 4" DIA. SMH PER CCSD STD DWG NO. SD-1
- 303. SEWER CLEANOUT PER UNIFORM PLUMBING CODE, LATEST EDITION
- 304. 6" GATE VALVE
- 305. 6" x 45° BEND
- 306. 8" x 8" x 6" TEE
- 307. 6" x 90° ELBOW
- 308. 4" DIA. SMH PER CCSD STD DWG NO. SD-1
- 309. SEWER CLEANOUT PER UNIFORM PLUMBING CODE, LATEST EDITION
- 310. 6" GATE VALVE
- 311. 6" x 45° BEND
- 312. 8" x 8" x 6" TEE
- 313. 6" x 90° ELBOW
- 314. 4" DIA. SMH PER CCSD STD DWG NO. SD-1
- 315. SEWER CLEANOUT PER UNIFORM PLUMBING CODE, LATEST EDITION
- 316. 6" GATE VALVE
- 317. 6" x 45° BEND
- 318. 8" x 8" x 6" TEE
- 319. 6" x 90° ELBOW
- 320. 4" DIA. SMH PER CCSD STD DWG NO. SD-1
- 321. SEWER CLEANOUT PER UNIFORM PLUMBING CODE, LATEST EDITION
- 322. 6" GATE VALVE
- 323. 6" x 45° BEND
- 324. 8" x 8" x 6" TEE
- 325. 6" x 90° ELBOW
- 326. 4" DIA. SMH PER CCSD STD DWG NO. SD-1
- 327. SEWER CLEANOUT PER UNIFORM PLUMBING CODE, LATEST EDITION
- 328. 6" GATE VALVE
- 329. 6" x 45° BEND
- 330. 8" x 8" x 6" TEE
- 331. 6" x 90° ELBOW
- 332. 4" DIA. SMH PER CCSD STD DWG NO. SD-1
- 333. SEWER CLEANOUT PER UNIFORM PLUMBING CODE, LATEST EDITION
- 334. 6" GATE VALVE
- 335. 6" x 45° BEND
- 336. 8" x 8" x 6" TEE
- 337. 6" x 90° ELBOW
- 338. 4" DIA. SMH PER CCSD STD DWG NO. SD-1
- 339. SEWER CLEANOUT PER UNIFORM PLUMBING CODE, LATEST EDITION
- 340. 6" GATE VALVE
- 341. 6" x 45° BEND
- 342. 8" x 8" x 6" TEE
- 343. 6" x 90° ELBOW
- 344. 4" DIA. SMH PER CCSD STD DWG NO. SD-1
- 345. SEWER CLEANOUT PER UNIFORM PLUMBING CODE, LATEST EDITION
- 346. 6" GATE VALVE
- 347. 6" x 45° BEND
- 348. 8" x 8" x 6" TEE
- 349. 6" x 90° ELBOW
- 350. 4" DIA. SMH PER CCSD STD DWG NO. SD-1
- 351. SEWER CLEANOUT PER UNIFORM PLUMBING CODE, LATEST EDITION
- 352. 6" GATE VALVE
- 353. 6" x 45° BEND
- 354. 8" x 8" x 6" TEE
- 355. 6" x 90° ELBOW
- 356. 4" DIA. SMH PER CCSD STD DWG NO. SD-1
- 357. SEWER CLEANOUT PER UNIFORM PLUMBING CODE, LATEST EDITION
- 358. 6" GATE VALVE
- 359. 6" x 45° BEND
- 360. 8" x 8" x 6" TEE
- 361. 6" x 90° ELBOW
- 362. 4" DIA. SMH PER CCSD STD DWG NO. SD-1
- 363. SEWER CLEANOUT PER UNIFORM PLUMBING CODE, LATEST EDITION
- 364. 6" GATE VALVE
- 365. 6" x 45° BEND
- 366. 8" x 8" x 6" TEE
- 367. 6" x 90° ELBOW
- 368. 4" DIA. SMH PER CCSD STD DWG NO. SD-1
- 369. SEWER CLEANOUT PER UNIFORM PLUMBING CODE, LATEST EDITION
- 370. 6" GATE VALVE
- 371. 6" x 45° BEND
- 372. 8" x 8" x 6" TEE
- 373. 6" x 90° ELBOW
- 374. 4" DIA. SMH PER CCSD STD DWG NO. SD-1
- 375. SEWER CLEANOUT PER UNIFORM PLUMBING CODE, LATEST EDITION
- 376. 6" GATE VALVE
- 377. 6" x 45° BEND
- 378. 8" x 8" x 6" TEE
- 379. 6" x 90° ELBOW
- 380. 4" DIA. SMH PER CCSD STD DWG NO. SD-1
- 381. SEWER CLEANOUT PER UNIFORM PLUMBING CODE, LATEST EDITION
- 382. 6" GATE VALVE
- 383. 6" x 45° BEND
- 384. 8" x 8" x 6" TEE
- 385. 6" x 90° ELBOW
- 386. 4" DIA. SMH PER CCSD STD DWG NO. SD-1
- 387. SEWER CLEANOUT PER UNIFORM PLUMBING CODE, LATEST EDITION
- 388. 6" GATE VALVE
- 389. 6" x 45° BEND
- 390. 8" x 8" x 6" TEE
- 391. 6" x 90° ELBOW
- 392. 4" DIA. SMH PER CCSD STD DWG NO. SD-1
- 393. SEWER CLEANOUT PER UNIFORM PLUMBING CODE, LATEST EDITION
- 394. 6" GATE VALVE
- 395. 6" x 45° BEND
- 396. 8" x 8" x 6" TEE
- 397. 6" x 90° ELBOW
- 398. 4" DIA. SMH PER CCSD STD DWG NO. SD-1
- 399. SEWER CLEANOUT PER UNIFORM PLUMBING CODE, LATEST EDITION
- 400. 6" GATE VALVE
- 401. 6" x 45° BEND
- 402. 8" x 8" x 6" TEE
- 403. 6" x 90° ELBOW
- 404. 4" DIA. SMH PER CCSD STD DWG NO. SD-1
- 405. SEWER CLEANOUT PER UNIFORM PLUMBING CODE, LATEST EDITION
- 406. 6" GATE VALVE
- 407. 6" x 45° BEND
- 408. 8" x 8" x 6" TEE
- 409. 6" x 90° ELBOW
- 410. 4" DIA. SMH PER CCSD STD DWG NO. SD-1
- 411. SEWER CLEANOUT PER UNIFORM PLUMBING CODE, LATEST EDITION
- 412. 6" GATE VALVE
- 413. 6" x 45° BEND
- 414. 8" x 8" x 6" TEE
- 415. 6" x 90° ELBOW
- 416. 4" DIA. SMH PER CCSD STD DWG NO. SD-1
- 417. SEWER CLEANOUT PER UNIFORM PLUMBING CODE, LATEST EDITION
- 418. 6" GATE VALVE
- 419. 6" x 45° BEND
- 420. 8" x 8" x 6" TEE
- 421. 6" x 90° ELBOW
- 422. 4" DIA. SMH PER CCSD STD DWG NO. SD-1
- 423. SEWER CLEANOUT PER UNIFORM PLUMBING CODE, LATEST EDITION
- 424. 6" GATE VALVE
- 425. 6" x 45° BEND
- 426. 8" x 8" x 6" TEE
- 427. 6" x 90° ELBOW
- 428. 4" DIA. SMH PER CCSD STD DWG NO. SD-1
- 429. SEWER CLEANOUT PER UNIFORM PLUMBING CODE, LATEST EDITION
- 430. 6" GATE VALVE
- 431. 6" x 45° BEND
- 432. 8" x 8" x 6" TEE
- 433. 6" x 90° ELBOW
- 434. 4" DIA. SMH PER CCSD STD DWG NO. SD-1
- 435. SEWER CLEANOUT PER UNIFORM PLUMBING CODE, LATEST EDITION
- 436. 6" GATE VALVE
- 437. 6" x 45° BEND
- 438. 8" x 8" x 6" TEE
- 439. 6" x 90° ELBOW
- 440. 4" DIA. SMH PER CCSD STD DWG NO. SD-1
- 441. SEWER CLEANOUT PER UNIFORM PLUMBING CODE, LATEST EDITION
- 442. 6" GATE VALVE
- 443. 6" x 45° BEND
- 444. 8" x 8" x 6" TEE
- 445. 6" x 90° ELBOW
- 446. 4" DIA. SMH PER CCSD STD DWG NO. SD-1
- 447. SEWER CLEANOUT PER UNIFORM PLUMBING CODE, LATEST EDITION
- 448. 6" GATE VALVE
- 449. 6" x 45° BEND
- 450. 8" x 8" x 6" TEE
- 451. 6" x 90° ELBOW
- 452. 4" DIA. SMH PER CCSD STD DWG NO. SD-1
- 453. SEWER CLEANOUT PER UNIFORM PLUMBING CODE, LATEST EDITION
- 454. 6" GATE VALVE
- 455. 6" x 45° BEND
- 456. 8" x 8" x 6" TEE
- 457. 6" x 90° ELBOW
- 458. 4" DIA. SMH PER CCSD STD DWG NO. SD-1
- 459. SEWER CLEANOUT PER UNIFORM PLUMBING CODE, LATEST EDITION
- 460. 6" GATE VALVE
- 461. 6" x 45° BEND
- 462. 8" x 8" x 6" TEE
- 463. 6" x 90° ELBOW
- 464. 4" DIA. SMH PER CCSD STD DWG NO. SD-1
- 465. SEWER CLEANOUT PER UNIFORM PLUMBING CODE, LATEST EDITION
- 466. 6" GATE VALVE
- 467. 6" x 45° BEND
- 468. 8" x 8" x 6" TEE
- 469. 6" x 90° ELBOW
- 470. 4" DIA. SMH PER CCSD STD DWG NO. SD-1
- 471. SEWER CLEANOUT PER UNIFORM PLUMBING CODE, LATEST EDITION
- 472. 6" GATE VALVE
- 473. 6" x 45° BEND
- 474. 8" x 8" x 6" TEE
- 475. 6" x 90° ELBOW
- 476. 4" DIA. SMH PER CCSD STD DWG NO. SD-1
- 477. SEWER CLEANOUT PER UNIFORM PLUMBING CODE, LATEST EDITION
- 478. 6" GATE VALVE
- 479. 6" x 45° BEND
- 480. 8" x 8" x 6" TEE
- 481. 6" x 90° ELBOW
- 482. 4" DIA. SMH PER CCSD STD DWG NO. SD-1
- 483. SEWER CLEANOUT PER UNIFORM PLUMBING CODE, LATEST EDITION
- 484. 6" GATE VALVE
- 485. 6" x 45° BEND
- 486. 8" x 8" x 6" TEE
- 487. 6" x 90° ELBOW
- 488. 4" DIA. SMH PER CCSD STD DWG NO. SD-1
- 489. SEWER CLEANOUT PER UNIFORM PLUMBING CODE, LATEST EDITION
- 490. 6" GATE VALVE
- 491. 6" x 45° BEND
- 492. 8" x 8" x 6" TEE
- 493. 6" x 90° ELBOW
- 494. 4" DIA. SMH PER CCSD STD DWG NO. SD-1
- 495. SEWER CLEANOUT PER UNIFORM PLUMBING CODE, LATEST EDITION
- 496. 6" GATE VALVE
- 497. 6" x 45° BEND
- 498. 8" x 8" x 6" TEE
- 499. 6" x 90° ELBOW
- 500. 4" DIA. SMH PER CCSD STD DWG NO. SD-1
- 501. SEWER CLEANOUT PER UNIFORM PLUMBING CODE, LATEST EDITION
- 502. 6" GATE VALVE
- 503. 6" x 45° BEND
- 504. 8" x 8" x 6" TEE

