

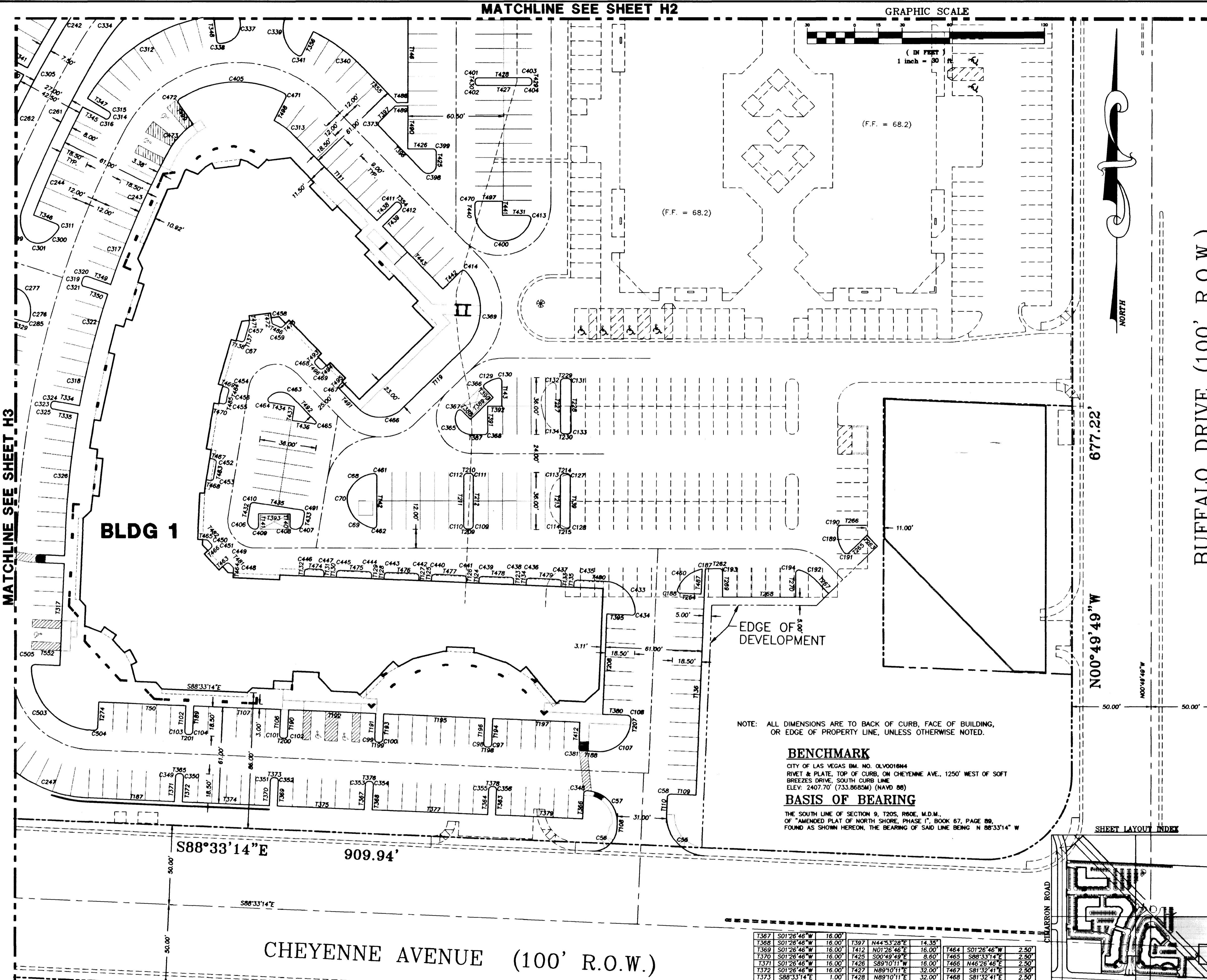
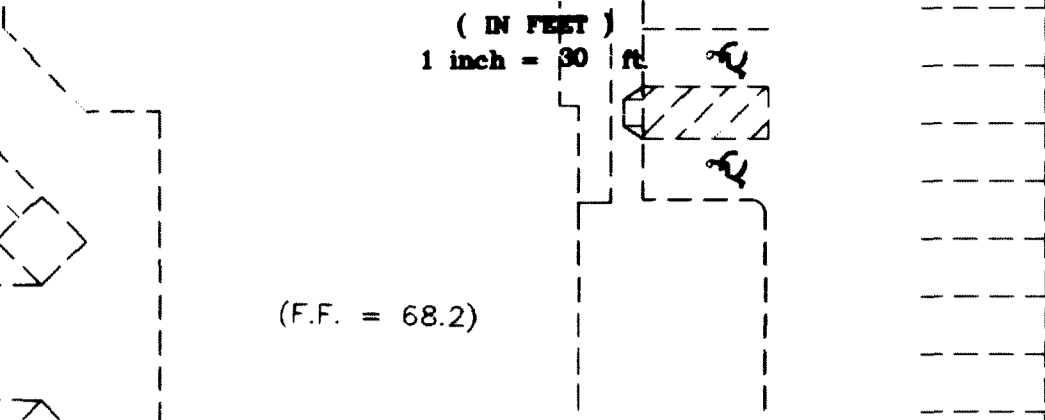
MATCHLINE SEE SHEET H2

GRAPHIC SCALE

BACK OF CURB

CURVE DATA TABLE:

CURVE	RADIUS	LENGTH	TANGENT	DELTA
C01	25.00	39.27	25.00	90.0000
C02	15.00	21.56	15.00	89.9999
C03	20.00	31.39	19.98	89.9999
C04	2.00	3.14	2.00	90.0000
C05	2.00	3.14	2.00	90.0000
C06	20.00	20.27	11.00	89.9999
C07	20.00	25.84	15.08	74.0107
C08	10.00	5.12	2.62	29.2033
C09	2.00	3.14	2.00	90.0000
C10	2.00	3.14	2.00	90.0000
C11	2.00	3.14	2.00	90.0000
C12	2.00	3.14	2.00	90.0000
C13	2.00	3.14	2.00	90.0000
C14	2.00	3.14	2.00	90.0000
C15	2.00	3.14	2.00	90.0000
C16	2.00	3.14	2.00	90.0000
C17	2.00	3.14	2.00	90.0000
C18	2.00	3.14	2.00	90.0000
C19	2.00	3.14	2.00	90.0000
C20	2.00	3.14	2.00	90.0000
C21	2.00	3.14	2.00	90.0000
C22	2.00	3.14	2.00	90.0000
C23	2.00	3.14	2.00	90.0000
C24	2.00	3.14	2.00	90.0000
C25	2.00	3.14	2.00	90.0000
C26	2.00	3.14	2.00	90.0000
C27	2.00	3.14	2.00	90.0000
C28	2.00	3.14	2.00	90.0000
C29	2.00	3.14	2.00	90.0000
C30	2.00	3.14	2.00	90.0000
C31	2.00	3.14	2.00	90.0000
C32	2.00	3.14	2.00	90.0000
C33	2.00	3.14	2.00	90.0000
C34	2.00	3.14	2.00	90.0000
C35	2.00	3.14	2.00	90.0000
C36	2.00	3.14	2.00	90.0000
C37	2.00	3.14	2.00	90.0000
C38	2.00	3.14	2.00	90.0000
C39	2.00	3.14	2.00	90.0000
C40	2.00	3.14	2.00	90.0000
C41	2.00	3.14	2.00	90.0000
C42	2.00	3.14	2.00	90.0000
C43	2.00	3.14	2.00	90.0000
C44	2.00	3.14	2.00	90.0000
C45	2.00	3.14	2.00	90.0000
C46	2.00	3.14	2.00	90.0000
C47	2.00	3.14	2.00	90.0000
C48	2.00	3.14	2.00	90.0000
C49	2.00	3.14	2.00	90.0000
C50	2.00	3.14	2.00	90.0000
C51	2.00	3.14	2.00	90.0000
C52	2.00	3.14	2.00	90.0000
C53	2.00	3.14	2.00	90.0000
C54	2.00	3.14	2.00	90.0000
C55	2.00	3.14	2.00	90.0000
C56	2.00	3.14	2.00	90.0000
C57	2.00	3.14	2.00	90.0000
C58	2.00	3.14	2.00	90.0000
C59	2.00	3.14	2.00	90.0000
C60	2.00	3.14	2.00	90.0000
C61	2.00	3.14	2.00	90.0000
C62	2.00	3.14	2.00	90.0000
C63	2.00	3.14	2.00	90.0000
C64	2.00	3.14	2.00	90.0000
C65	2.00	3.14	2.00	90.0000
C66	2.00	3.14	2.00	90.0000
C67	2.00	3.14	2.00	90.0000
C68	2.00	3.14	2.00	90.0000
C69	2.00	3.14	2.00	90.0000
C70	2.00	3.14	2.00	90.0000
C71	2.00	3.14	2.00	90.0000
C72	2.00	3.14	2.00	90.0000
C73	2.00	3.14	2.00	90.0000
C74	2.00	3.14	2.00	90.0000
C75	2.00	3.14	2.00	90.0000
C76	2.00	3.14	2.00	90.0000
C77	2.00	3.14	2.00	90.0000
C78	2.00	3.14	2.00	90.0000
C79	2.00	3.14	2.00	90.0000
C80	2.00	3.14	2.00	90.0000
C81	2.00	3.14	2.00	90.0000
C82	2.00	3.14	2.00	90.0000
C83	2.00	3.14	2.00	90.0000
C84	2.00	3.14	2.00	90.0000
C85	2.00	3.14	2.00	90.0000
C86	2.00	3.14	2.00	90.0000
C87	2.00	3.14	2.00	90.0000
C88	2.00	3.14	2.00	90.0000
C89	2.00	3.14	2.00	90.0000
C90	2.00	3.14	2.00	90.0000
C91	2.00	3.14	2.00	90.0000
C92	2.00	3.14	2.00	90.0000
C93	2.00	3.14	2.00	90.0000
C94	2.00	3.14	2.00	90.0000
C95	2.00	3.14	2.00	90.0000
C96	2.00	3.14	2.00	90.0000
C97	2.00	3.14	2.00	90.0000
C98	2.00	3.14	2.00	90.0000
C99	2.00	3.14	2.00	90.0000
C100	2.00	3.14	2.00	90.0000



BACK OF CURB TANGENT DATA TABLE:

LINE	DIRECTION	DISTANCE	T125	N01°26'46"E	2.50'	T136	S01°26'47"W	143.16'	T189	N01°26'46"E	16.00'	T200	S88°33'14"E	1.00'	T227	S00°49'49"E	31.00'	T289	S00°49'49"E	16.00'	T347	N59°45'44"W	16.02'	T379	S88°33'14"E	55.00'	T434	S81°55'17"E	15.31'	T474	N88°33'14"W	8.33'	T485	S08°27'20"W	3.16'	T497	N89°10'11"E	15.50'
T50	S88°33'14"E	55.00'	T125	N01°26'46"E	2.50'	T136	S01°26'47"W	143.16'	T189	N01°26'46"E	16.00'	T200	S88°33'14"E	1.00'	T227	S00°49'49"E	31.00'	T289	S00°49'49"E	16.00'	T347	N59°45'44"W	16.02'	T379	S88°33'14"E	55.00'	T434	S81°55'17"E	15.31'	T474	N88°33'14"W	8.33'	T485	S08°27'20"W	3.16'	T497	N89°10'11"E	15.50'
T106	N01°26'46"E	16.00'	T127	N01°26'46"E	2.50'	T137	S15°10'21"W	10.01'	T190	N01°26'46"E	16.00'	T201	S88°33'14"E	1.00'	T228	S00°49'49"E	31.00'	T270	S00°49'49"E	15.37'	T348	N08°40'24"W	16.02'	T380	S88°33'14"E	16.00'	T435	S81°55'17"E	31.00'	T475	N88°33'14"W	18.00'	T487	S01°26'47"W	15.86'	T498	N35°10'52"W	15.97'
T107	S88°33'14"E	55.00'	T128	N01°26'46"E	2.50'	T138	S74°43'39"E	3.00'	T191	N01°26'46"E	16.00'	T202	S88°33'14"E	1.00'	T229	S89°10'11"E	2.65'	T271	S01°26'46"W	2.65'	T349	N72°20'50"W	16.00'	T381	S45°06'32"E	16.00'	T436	S81°55'17"E	18.00'	T476	N88°33'14"W	18.00'	T488	N89°10'11"E	6.87'	T500	N88°33'14"W	15.89'
T108	S01°26'47"W	3.01'	T129	N01°26'46"E	2.50'	T139	N00°36'00"W	7.22'	T192	N01°26'46"E	16.00'	T203	S89°10'11"E	2.00'	T230	S89°10'11"E	7.72'	T272	S00°49'49"E	1.00'	T350	N44°53'28"E	16.00'	T382	S45°06'32"E	16.00'	T437	S81°55'17"E	2.50'	T477	N88°33'14"W	18.00'	T489	N89°10'11"E	7.92'	T501	S00°49'49"E	27.11'
T109	S88°33'14"E	16.00'	T130	N01°26'46"E	2.50'	T140	N00°36'00"W	7.27'	T193	N01°26'46"E	16.00'	T204	S89°10'11"E	2.00'	T231	N89°10'11"E	9.50'	T273	N80°27'43"W	16.00'	T351	S45°06'32"E	31.33'	T383	N80°27'43"W	16.00'	T438	S45°06'32"E	16.19'	T478	N88°33'14"W	18.00'	T490	S45°06'32"E	16.19'	T502	S01°26'47"W	21.70'
T110	S01°26'47"W	11.01'	T131	N01°26'46"E	2.50'	T141	S00°49'49"E	30.92'	T194	S88°33'14"E	64.00'	T205	S89°10'11"E	31.00'	T232	S00°49'49"E	31.00'	T274	N80°27'43"W	15.89'	T352	N44°53'28"E	15.89'	T384	N80°27'43"W	16.00'	T439	S01°26'46"W	16.00'	T479	N88°33'14"W	17.60'	T491	S45°06'32"E	21.70'	T503	S01°26'47"W	2.50'
T111	S45°06'32"E	75.17'	T132	N01°26'46"E	2.50'	T142	S00°49'49"E	15.75'	T195	N01°26'46"E	16.00'	T206	S89°10'11"E	55.00'	T233	S00°49'49"E	31.00'	T275	N80°27'43"W	15.77'	T353	N44°53'28"E	15.77'	T385	N89°10'11"E	15.77'	T440	S00°49'49"E	16.00'	T480	N88°33'14"W	17.60'	T492	S45°06'32"E	2.50'	T504	S01°26'47"W	2.50'
T112	S45°06'32"E	54.00'	T133	N01°26'46"E	2.50'	T143	S00°49'49"E	70.89'	T196	N01°26'46"E	16.00'	T207	S89°10'11"E	55.00'	T234	S00°49'49"E	31.00'	T276	N80°27'43"W	15.77'	T354	N44°53'28"E	15.77'	T386	N89°10'11"E	15.77'	T441	S00°49'49"E	16.00'	T481	N88°33'14"W	17.60'	T493	S45°06'32"E	2.50'	T505	S01°26'47"W	2.50'
T113	N01°26'46"E	2.50'	T134	N01°26'46"E	2.50'	T144	S00°49'49"E	54.46'	T197	N01°26'46"E	16.00'	T208	S89°10'11"E	1.00'	T235	S00°49'49"E	13.34'	T277	N80°27'43"W	16.02'	T355	N44°53'28"E	16.02'	T387	N89°10'11"E	13.34'	T442	S00°49'49"E	16.00'	T482	N88°33'14"W	9.73'	T494	S45°06'32"E	2.50'	T506	S01°26'47"W	2.50'
T114	N01°26'46"E	2.50'	T135	N01°26'46"E	2.50'	T145	S00°49'49"E	10.28'	T198	N01°26'46"E	16.00'	T209	S89°10'11"E	1.00'	T236	S00°49'49"E	46.00'	T278	N80°27'43"W	15.81'	T356	N44°53'28"E	15.81'	T388	N89°10'11"E	15.81'	T443	S00°49'49"E	16.00'	T483	N88°33'14"W	3.16'	T495	S45°06'32"E	3.08'			

NORTHWEST PROPERTIES, L.L.C.
6900 WESTCLIFF DRIVE, #905
LAS VEGAS, NEVADA 89128
(702) 256-3781

FLYNN GALLAGHER CORP. CENTER
NWC OF CHEYENNE AND BUFFALO
APN 138-09-801-018 & 019
CITY OF LAS VEGAS, NEVADA

AGRA Infrastructure, Inc.
ENGINEERING GLOBAL SOLUTIONS
3016 W. CHARLESTON BOULEVARD, SUITE 180
LAS VEGAS, NEVADA 89102
PHONE: (702) 876-3817 FAX: (702) 876-3716

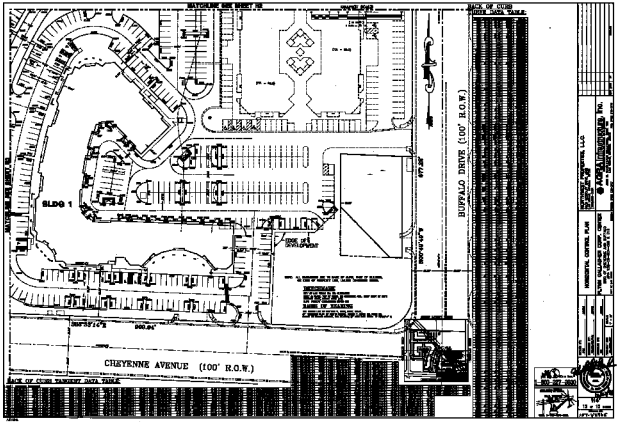
REVISION: _____
DATE: _____
BY: _____

DRAWN BY: _____
DESIGNED BY: _____
CHECKED BY: _____
PROJECT NO: _____
SCALE: 1" = 30'

1-800-227-2600

CALL BEFORE YOU DIG

H4
15 OF 15 SHEETS
DRAWING NO.
107-V2965



BLDG 1

100.00'

CHEYENNE AVENUE (100' R.O.W.)

BUFFALO DRIVE (100' R.O.W.)

REVISIONS
 NO. DATE
 NAME OF ENGINEER
 LICENSE NO. STATE

ARCHITECTURAL FIRM, LLC
 10000 N. 10TH AVENUE, SUITE 100
 DENVER, CO 80231
 PHONE: (303) 751-1000
 FAX: (303) 751-1001
 WWW: WWW.ACFM.COM

COMMERCIAL CONTROL PLAN
 FOR CHEYENNE COMM. CENTER
 10000 N. 10TH AVENUE, SUITE 100
 DENVER, CO 80231

DATE: 10/15/10
 SCALE: AS SHOWN
 SHEET NO. 10 OF 10

10
 10/15/10