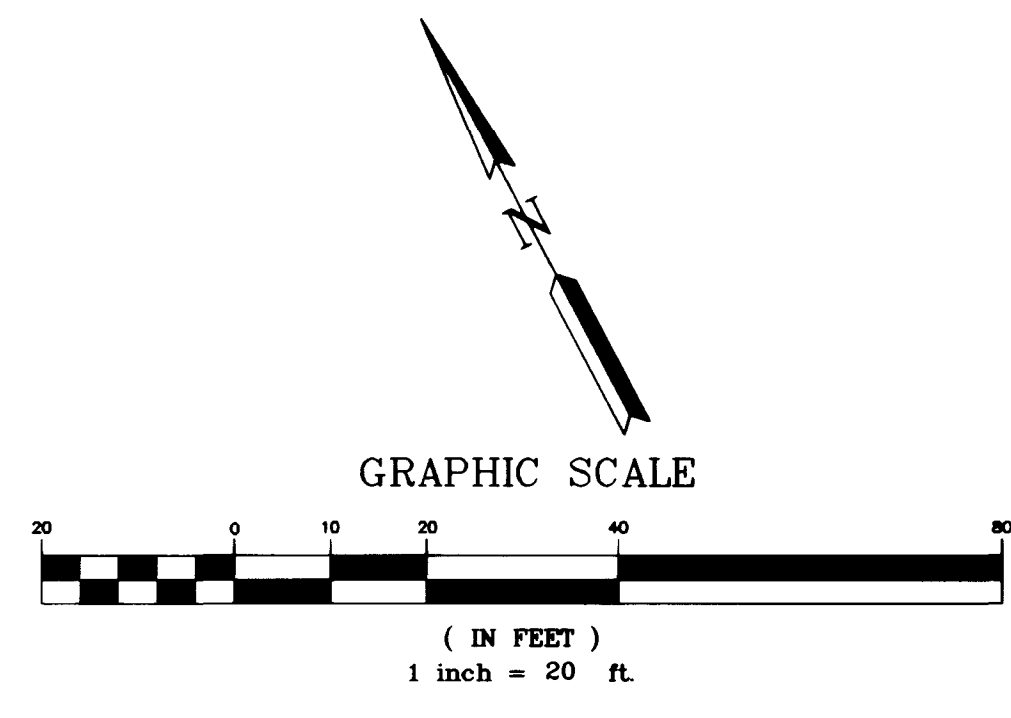
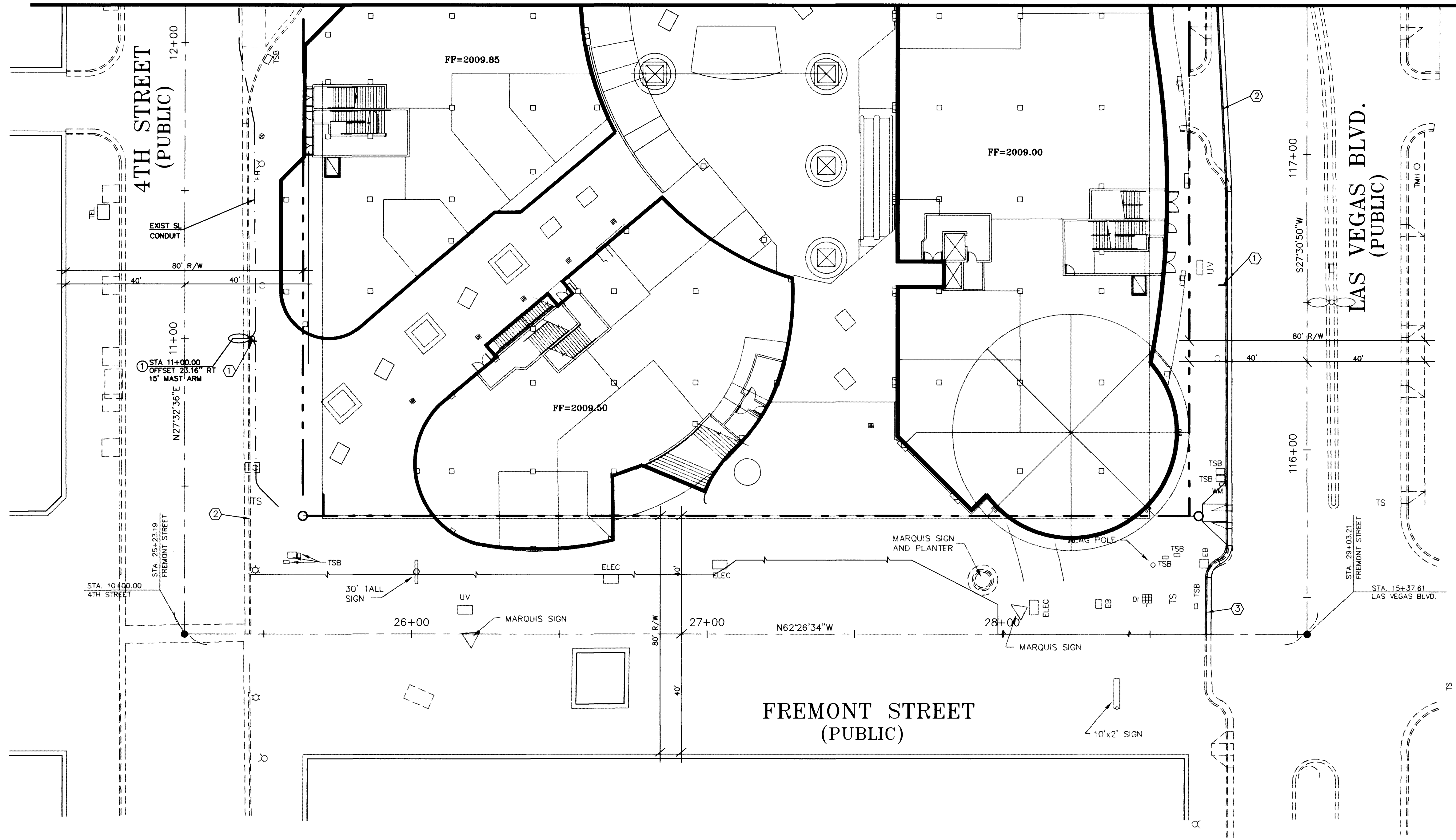


MATCH LINE FOR CONTINUATION SEE SHEET TS1



**BASIS OF BEARING**  
 S 62°04'36" E THE CENTERLINE OF OGDEN AVENUE AS SHOWN ON RECORD OF SURVEY IN FILE 67, PAGE 79, CLARK COUNTY RECORDS.

**BENCHMARK**  
 FREMONT 5 - RIVET AND PLATE IN TOP OF CURB, NE RETURN FREMONT STREET AND LAS VEGAS BOULEVARD.  
 ELEVATION = 611.8322 METERS = 2007.32 FEET  
 NAVD 88

- SIGNAGE & STRIPING NOTES**
- ① INSTALL R8-3A (18"x18") SIGN.
  - ② PAINT CURB RED.
  - ③ PAINT CURB WITH YELLOW REFLECTIVE PAINT.
  - ④ INSTALL R7-201 (12"x6") SIGN.
  - ⑤ INSTALL FREMONT STREET EXPERIENCE SHOWTIME DETOUR SIGN.
  - ⑥ INSTALL CAT BUS ROUTE SIGN.
  - ⑦ INSTALL TROLLEY STOP SIGN.
  - ⑧ EXISTING STOP SIGN.

- STREET LIGHT NOTES**
- ① INSTALL STREET LIGHT PREVIOUSLY REMOVED AND STORED IN CITY OF LAS VEGAS YARD. COORDINATE WITH CITY OF LAS VEGAS STREET LIGHT DIVISION. INSTALL BASE PER CCUSD NO. 321. BOLT PATTERN TO MATCH PREVIOUSLY REMOVED STREET LIGHT POLE.
  - ② INSTALL PRECAST REINFORCED CONCRETE 3-1/2 PULL BOX PER CCUSD NO. 326.
  - ③ INSTALL 1-1/4" PVC STREETLIGHT CONDUIT.
  - ④ CONNECT TO EXISTING STREET LIGHT SERVICE AND PULL BOX.

no	description of revisions	date	name

**WEC** WORLD ENTERTAINMENT CENTERS  
 LAS VEGAS INC.  
 233 SOUTH TOWERS STREET, SUITE 201  
 LAS VEGAS, NEVADA 89101  
 PHONE (702) 477-1470

**MARTIN & MARTIN**  
 CIVIL ENGINEERS  
 2101 SOUTH JONES BLVD., SUITE A  
 LAS VEGAS, NEVADA 89146  
 PHONE (702) 248-8000

sheet **3-26-99**  
 date  
 job number 1671.00  
 design by J. BETTENCOURT  
 drawn by V. WINFORD  
 checked by D. MALPASS, P.E.

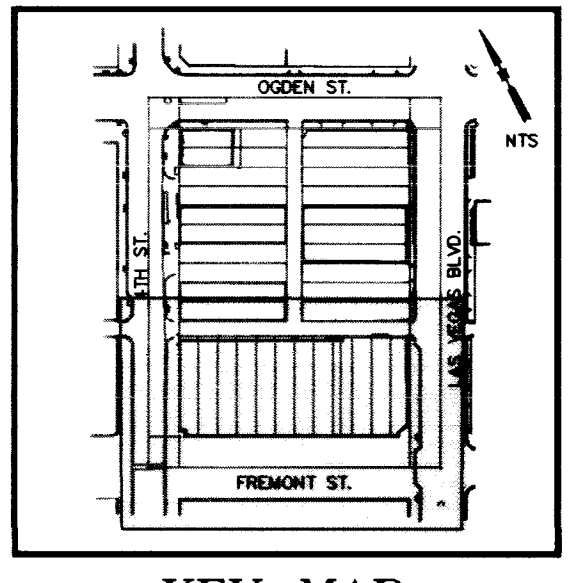
title **SIGNAGE, STRIPING AND STREETLIGHTING PLAN**

**NEONOPOLIS**  
 @ FREMONT STREET EXPERIENCE

AVOID CUTTING UNDERGROUND UTILITY LINES. IT'S COSTLY.  
**Call before you Dig-**  
 1-800-227-2600  
 UNDERGROUND SERVICE ALERT (U.S.A.)

AVOID OVERHEAD POWER LINE CONTACT  
**Call before you OVERHEAD**  
 1-702-593-6111  
 NEVADA POWER ENVIRONMENT AND SAFETY SERVICES DEPARTMENT

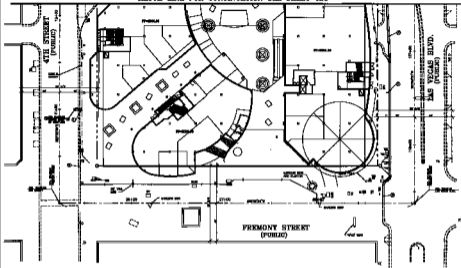
MARTIN & MARTIN ASSUMES NO RESPONSIBILITY FOR EXISTING UTILITY LOCATIONS AND ELEVATIONS. THE UTILITIES SHOWN ON THIS DRAWING HAVE BEEN PLOTTED FROM THE BEST AVAILABLE INFORMATION. IT IS, HOWEVER, THE CONTRACTOR'S RESPONSIBILITY TO FIELD VERIFY THE LOCATION AND ELEVATION OF ALL UTILITIES PRIOR TO THE COMMENCEMENT OF ANY CONSTRUCTION. CONTRACTOR TO FIELD VERIFY ALL EXISTING SITE CONDITIONS PRIOR TO CONSTRUCTION. IF A CONFLICT EXISTS BETWEEN WHAT IS SHOWN ON THESE DRAWINGS AND WHAT EXISTS IN THE FIELD, THE CONTRACTOR IS TO NOTIFY THE ARCHITECT OR ENGINEER IMMEDIATELY.



Professional Engineer Seal for J. Bettencourt, State of Nevada, No. 51799, dated 5-17-99.

sheet **TS2**  
 SHEET 16 OF 16  
 drawing number 107-V3130

MATCH LINE FOR CONTINUATION SEE SHEET TS1



**NAME OF DRAWING**  
 SITE PLAN FOR THE PROPOSED  
 STORAGE, STAGING AND STRATEGIC PLAN

**REFERENCE**  
 DRAWING IS TO BE USED IN CONJUNCTION WITH THE  
 PROJECT AND IS NOT TO BE USED FOR ANY OTHER  
 PURPOSE.

**NOTES & STRIPPING NOTES**

- 1. SHALL BE IN ACCORDANCE WITH THE
- 2. SHALL BE IN ACCORDANCE WITH THE
- 3. SHALL BE IN ACCORDANCE WITH THE
- 4. SHALL BE IN ACCORDANCE WITH THE
- 5. SHALL BE IN ACCORDANCE WITH THE
- 6. SHALL BE IN ACCORDANCE WITH THE
- 7. SHALL BE IN ACCORDANCE WITH THE
- 8. SHALL BE IN ACCORDANCE WITH THE

**STREET LIGHT NOTES**

- 1. SHALL BE IN ACCORDANCE WITH THE
- 2. SHALL BE IN ACCORDANCE WITH THE
- 3. SHALL BE IN ACCORDANCE WITH THE
- 4. SHALL BE IN ACCORDANCE WITH THE
- 5. SHALL BE IN ACCORDANCE WITH THE



KEY MAP

BEFORE YOU  
 OVERHEAD  
 ...

THIS IS A MAP OF THE CITY OF LAS VEGAS, NEVADA, SHOWING THE LOCATION OF THE PROPOSED STORAGE, STAGING AND STRATEGIC PLAN. THE MAP IS TO BE USED IN CONJUNCTION WITH THE PROJECT AND IS NOT TO BE USED FOR ANY OTHER PURPOSE.

DATE: 1-15-78  
 DRAWN BY: J. W. ...  
 CHECKED BY: J. W. ...  
 PROJECT NO.: ...  
 SHEET NO.: ...

**VIETNAM VETERANS**  
**MEMORIAL**

**STORAGE, STAGING AND STRATEGIC PLAN**

**ARCHITECTS**  
 ...

**TS2**  
 SHEET 15 OF 18  
 1977-1978