

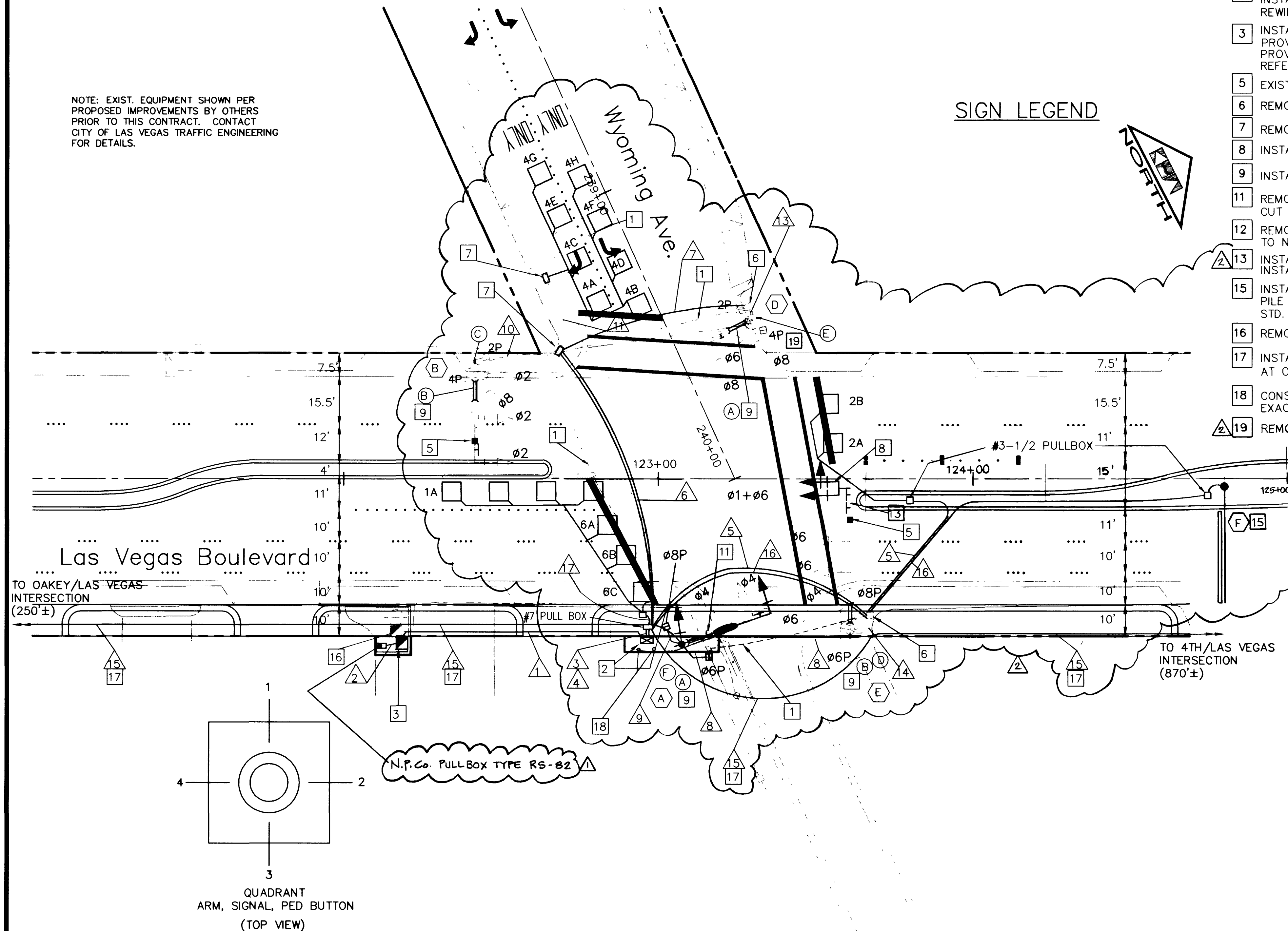
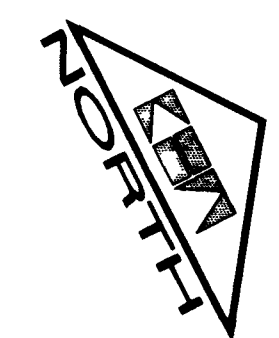
| POLE SCHEDULE |                                       |      |            |        |               |        |                       |         |                |        |                   |         |     |
|---------------|---------------------------------------|------|------------|--------|---------------|--------|-----------------------|---------|----------------|--------|-------------------|---------|-----|
| POLE          | LOCATION STATION                      | TYPE | SIGNAL ARM |        | LUMINAIRE ARM |        | SIGNALS (VEH.)        |         | SIGNALS (PED.) |        | PED. PUSH BUTTONS | REMARKS |     |
|               |                                       |      | QUAD       | LNG.   | QUAD          | LNG.   | TYPE                  | QUAD    | TYPE           | QUAD   |                   |         |     |
| (A)           | 123+07.5, 52.5' Rt.                   | XX   | 2          | 30'    | 2             | 15'    | M-2<br>B-1T           | MA      | W-3T           | 3      | 2                 | 1       | 9   |
| (B)           | EXISTING                              | XX   | EXIST.     | EXIST. | EXIST.        | EXIST. | EXIST.                | EXIST.  | EXIST.         | EXIST. | EXIST.            | EXIST.  | 5 9 |
| (D)           | EXISTING                              | XX   | 4          | EXIST. | 4             | EXIST. | EXIST.                | EXIST.  | EXIST.         | EXIST. | EXIST.            | EXIST.  | 5 9 |
| (E)           | EXISTING                              | XX   | 1          | 45'    | -             | -      | M-5<br>(2)M-2<br>B-3T | MA<br>3 | W-3T           | 4      | 1                 | 4       | 9 8 |
| (F)           | 124+00, 2.5' Rt. (OVERHEAD SIGN POST) | NDOT | SIGN FRAME | 3      | 37'           | -      | -                     | -       | -              | -      | -                 | -       | 15  |

\* DESIGNATES NEW EQUIPMENT. ALL OTHERS ARE EXISTING EQUIPMENT EITHER TO REMAIN OR TO BE RELOCATED ACCORDING TO THE PLAN.  
FINAL POLE LOCATIONS SHALL BE DETERMINED IN THE FIELD BY THE ENGINEER.

**SIGNAL EQUIPMENT INSTALLATION NOTES:**

- ABANDON IN PLACE.
- REMOVE AND SALVAGE EXIST. CONTROLLER AND CABINET. REMOVE EXIST. FOUNDATION AND CONDUIT A MIN. 18" BELOW GRADE. INSTALL 8 PHASE CONTROLLER IN TYPE R CABINET, PER CITY OF LAS VEGAS SPECIFICATIONS, ON TYPE "J" FOUNDATION COMPLETE. REWIRE SIGNAL SYSTEM AS SHOWN AND AS DIRECTED BY THE ENGINEER.
- INSTALL SERVICE PEDESTAL COMPLETE PER STD. DWG.# 404.1412. CONTACT NEVADA POWER CO. TO ARRANGE FOR SERVICE CONNECTION. PROVIDE THE FOLLOWING EQUIPMENT: 200A, 120/240V, 1Ø, 3W WITH 1-1P 30A CKT. BKR. AND 1-1P 60A CKT. BKR. PROVIDE ADDITIONAL 2" CONDUIT STUB FROM FOUNDATION FOR FUTURE USE. REFER TO SHEET D-2 FOR CONC. PAD AND BARRIER POST.
- EXISTING OPTICOM DETECTOR ON MAST ARM TO REMAIN.
- REMOVE EXIST. PULL BOX AND REPLACE WITH NEW. INSTALL CONDUIT AS SHOWN.
- REMOVE EXISTING PULL BOX AND REPLACE WITH NEW #5 PULL BOX.
- INSTALL M-5 MAST ARM SIGNAL HEAD ON EXIST. MAST ARM TENON COMPLETE.
- INSTALL NEW INTERNALLY ILLUMINATED STREET NAME SIGN ON POLE AS INDICATED ON THE PLAN.
- REMOVE AND SALVAGE EXIST. SIGNAL POLE, MAST ARM, AND LUMINAIRE MAST ARM AND ALL ATTACHMENTS. CUT EXIST. FOUNDATION AND REINFORCEMENT TO 18" BELOW GRADE.
- REMOVE EXISTING PULL BOX AND REPLACE WITH NEW #7 PULL BOX. CONNECT NEW TO EXIST. CONDUIT AND EXTEND TO NEW #7 PULL BOX AS SHOWN.
- INSTALL A R10-12 "LEFT TURN YIELD ON GREEN" SIGN AND A R3-4 NO U TURN SIGN ON MAST ARM OF POLE E COMPLETE. INSTALL A R3-4 NO U TURN SIGN ON MAST ARM OF POLE D COMPLETE. ~~INSTALL R3-5R SIGN ON MAST ARM OF POLE D COMPLETE.~~
- INSTALL SPECIAL GUIDE SIGN PER DETAIL SHEET TS-1 ON NDOT TYPE VII OVERHEAD SIGN POST AND FRAME. CAST IN PLACE CONCRETE PILE FOUNDATION SHALL BE 36" X 21". PROVIDE WALKWAY, SAFETY RAILING AND LIGHTING FIXTURES. FOR CONSTRUCTION DETAILS SEE NDOT STD. DWG.S T-36.1.1(627), T-36.1.2(627), T-36.1.4(627), T-36.1.6(627) THRU T-36.1.12(627) AND T-36.1.15(627).
- REMOVE AND SALVAGE EXIST. SERVICE BOX.
- INSTALL 3" INTERCONNECT CONDUIT AND CABLE (25 PAIR #22 AWG) WITH #5 PULL BOXES (AT INTERVALS NOT EXCEEDING 500') FROM CONTROLLER AT OAKLEY/LAS VEGAS INTERSECTION TO NEW CONTROLLER AND FROM NEW CONTROLLER TO 4TH/LAS VEGAS INTERSECTION.
- CONSTRUCT 2 STEEL BARRIER POSTS (4"x4"Ø FILLED WITH CONC.) AT BACK OF SIDEWALK TO PROTECT CONTROLLER. EXACT LOCATION TO BE DETERMINED BY THE ENGINEER.
- REMOVE AND SALVAGE EXIST. Ø6 AND Ø8 HEADS.

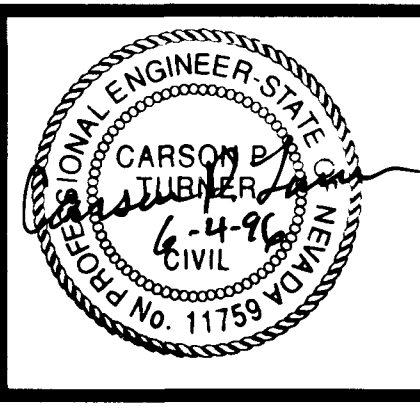
**SIGN LEGEND**



| WIRE & CABLE                       | FROM          | TO   | CONDUIT AND NEW WIRE SCHEDULE |        |    |        |    |        |    |    |    |     |     |  |
|------------------------------------|---------------|--|-------------------------------|--------|----|--------|----|--------|----|----|----|-----|-----|--|
|                                    |               |  | CONDUIT                       |        |    |        |    |        |    |    |    |     |     |  |
|                                    |               |  | 2"                            | 2 1/2" | 3" | 3 1/2" | 4" | 4 1/2" | 5" | 6" | 8" | 10" | 12" |  |
| 2-#2 AWG                           | CABINET       | SERVICE ENCLOSURE                                  | X                             |        |    |        |    |        |    |    |    |     |     |  |
| 1-#4 AWG                           | SERVICE POINT | SERVICE ENCLOSURE                                  | X                             |        |    |        |    |        |    |    |    |     |     |  |
| 1-25 COND. #14 AWG                 | CABINET       | POLE A   |                               |        | X  |        |    |        |    |    |    |     |     |  |
| 2-#10 AWG                          | CABINET       | POLE B   |                               |        | X  |        |    |        |    |    |    |     |     |  |
| 1-25 COND. #14 AWG                 | CABINET       | POLE D   |                               |        | X  | X      |    |        |    |    |    |     |     |  |
| 1-25 COND. #14 AWG                 | CABINET       | POLE E   |                               |        | X  | X      |    |        |    |    |    |     |     |  |
| 2-#10 AWG, 1 OPTICOM CABLE         | CABINET       | POLE E   |                               |        | X  | X      |    |        |    |    |    |     |     |  |
| 1 LOOP LEAD                        | CABINET       | LOOP 4A, 4C, 4E&4G                                 |                               |        | X  | X      |    |        |    |    |    |     |     |  |
| 1 LOOP LEAD                        | CABINET       | LOOPS 4B, 4D, 4F&4H                                |                               |        | X  | X      |    |        |    |    |    |     |     |  |
| 1 LOOP LEAD                        | CABINET       | LOOP 1A  |                               |        | X  |        |    |        |    |    |    |     | X   |  |
| 1 LOOP LEADS                       | CABINET       | LOOPS 6A, 6B, 6C                                   |                               |        | X  |        |    |        |    |    |    |     | X   |  |
| 1 LOOP LEADS                       | CABINET       | LOOPS 2A, 2B                                       |                               |        | X  | X      |    |        |    |    |    |     |     |  |
| 1 LOOP LEAD                        | CABINET       | LOOPS 8A   |                               |        | X  |        |    |        |    |    |    |     | X   |  |
| 25 PAIR #22 AWG INTERCONNECT CABLE | CABINET       | CABINETS AT OAKLEY AND 4TH/LAS VEGAS INTERSECTIONS |                               |        | X  |        |    |        |    |    |    |     | X   |  |
| 2-#10 AWG, #14 AWG                 | CABINET       | OVERHEAD SIGNS                                     |                               |        | X  |        |    |        |    |    |    |     | X   |  |

- CONDUIT SIZE (INCHES) 2" 2 1/2" 3" 3 1/2" 4" 4 1/2" 5" 6" 8" 10" 12"
- NOTES  
 1. A #8 GREEN BOND GROUND WIRE SHALL BE RUN FROM THE CONTROLLER CABINET TO THE BASE OF EACH NEW POLE.  
 2. E DENOTES EXISTING CONDUIT. CONDUIT SIZE DESIGNATES NEW CONDUIT TO BE INSTALLED BY CONTRACTOR.  
 3. THE CONTRACTOR SHALL MAINTAIN EXISTING SIGNAL CABLE TO EXISTING POLES WHICH ARE TO REMAIN.  
 4. THE CONTRACTOR SHALL REMOVE EXISTING LOOP LEADS AND INSTALL NEW ONES IN ACCORDANCE WITH THE WIRE SCHEDULE.

| NO. | REVISIONS   | DATE       | BY  |
|-----|---|------------|-----|
| 1   | DRIVEWAY DELETED, MEDIAN ISLAND NARROWED FOR LEFT TURN LANE, SIDEWALK RAMP DELETED, OVERHEAD SIGN RELOCATED | 4-16-97    | SKP |
| 2   | IDENTIFY N.P.Co. PULLBOX  | 30 AUG '96 | CLV |



**Kimley-Horn and Associates, Inc.**  
 Las Vegas, Nevada © 1996

DESIGNED BY CPT  
 DRAWN BY CPT  
 CHECKED BY [Signature]  
 NOTE BOOK NO.



**DOWNTOWN CORRIDOR IMPROVEMENTS**  
 CITY OF LAS VEGAS DEPT. OF PUBLIC WORKS  
 LAS VEGAS, NEVADA

DATE 6/96  
 SCALE 1"=20'

**SIGNAL SYSTEM FOR WYOMING AVE. AT LAS VEGAS BLVD.**

DWG. NO. 107-V-2288B  
 FILE NO. 9903.02  
 SHEET 38 OF 46  
**TS-3**

