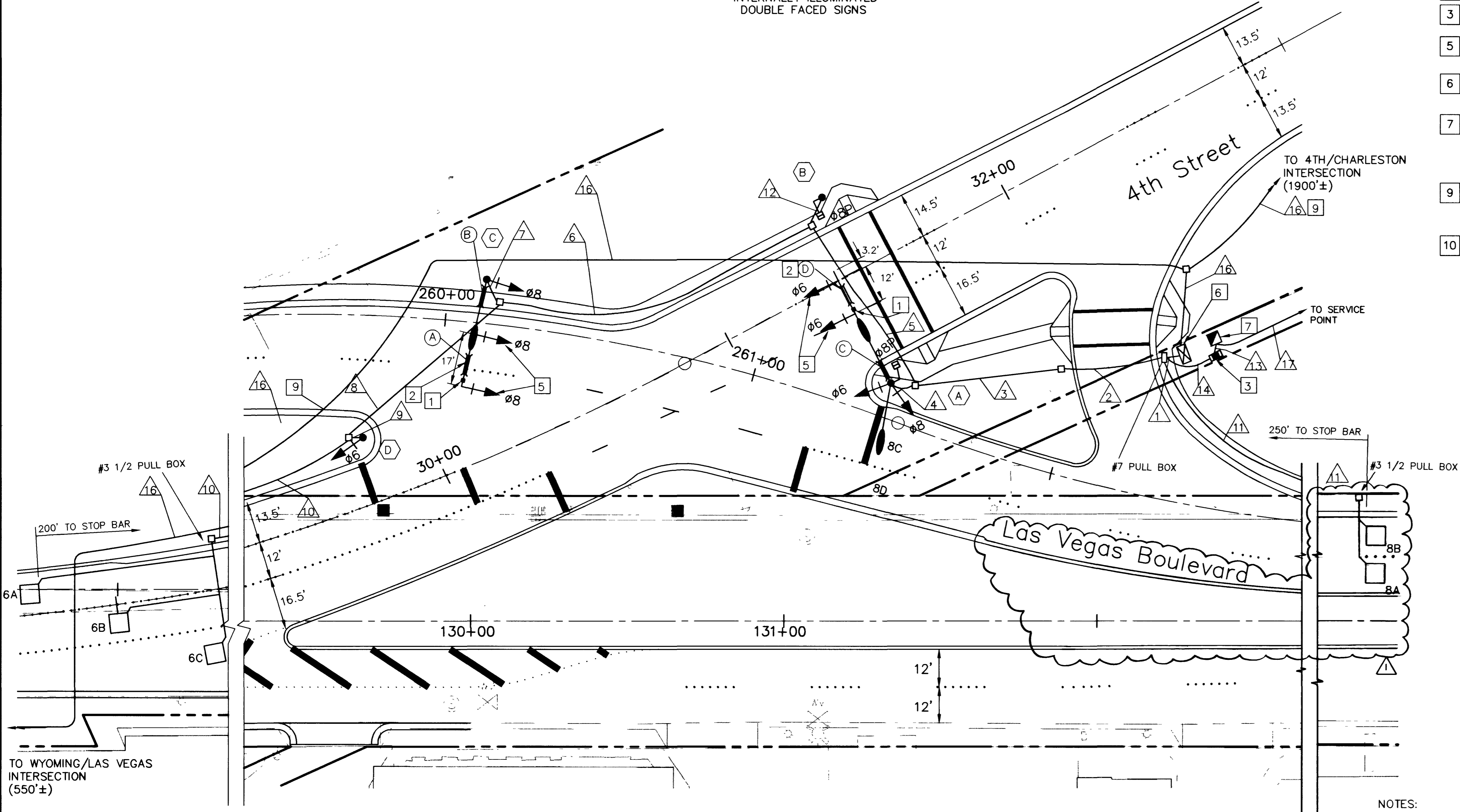


POLE SCHEDULE																
POLE	LOCATION STATION	TYPE	SIGNAL ARM		LUMINAIRE ARM		SIGNALS (VEH.)		SIGNALS (PED.)		REMARKS					
			QUAD	LANG.	QUAD	LANG.	TYPE	QUAD	TYPE	QUAD						
A	31+40, 21' LT	XX	1	40'	1	3A	15'	(2)M2 B-2T	MA 3	W-0T	3	2	RT.	1	5	10
B	31+84, 22' LT	1-B	-	-	-	-	-	-	-	W-1T	POST TOP	4	RT.			
C	260+12, 14' LT	XX	3	35'	3	15'	(2)M2 B-1T	MA 1	-	-	-	-	-	1	5	10
D	29+79, 11' LT	1-A	-	-	-	-	-	A-2T	POST TOP	-	-	-	-			

- POLE SCHEDULE NOTES:**
- THE LAMP TYPE FOR ALL LUMINARIES FOR THE INTERSECTION SHALL BE 120V, 400W HPS, 90° CUTOFF WITH M-C-III DISTRIBUTION, REGULAR BALLAST AND INTEGRAL PHOTOELECTRIC CONTROL (G.E. #4AC40S1M2GMC32 OR EQUIVALENT).
 - THE FINAL POLE LOCATIONS SHALL BE DETERMINED AT THE TIME OF CONSTRUCTION BY THE ENGINEER.

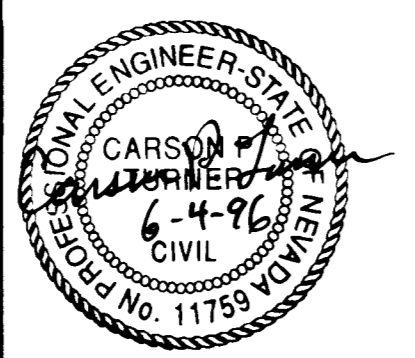
- SIGNAL EQUIPMENT INSTALLATION NOTES:**
- INSTALL OPTICOM MODEL M521 DETECTOR ON MAST ARM.
 - INSTALL SIGN BETWEEN SIGNAL HEADS.
 - INSTALL AN ANCILLARY POWER SOURCE COMPLETE. SEE SPECIAL PROVISIONS
 - MAST ARM MOUNTED VEHICULAR SIGNAL HEADS SHALL BE INSTALLED HORIZONTALLY, AS SPECIFIED IN THE GENERAL NOTES ON SHEET TS-1.
 - INSTALL 8 PHASE CONTROLLER IN TYPE R CABINET PER CITY OF LAS VEGAS SPECIFICATIONS ON TYPE "J" FOUNDATION COMPLETE.
 - INSTALL SERVICE PEDESTAL COMPLETE PER STD. DWG. # 404.1412 AND 404.215 RESPECTIVELY. CONTACT NEVADA POWER CO. FOR SERVICE CONNECTION. PROVIDE THE FOLLOWING EQUIPMENT: 200A 120/240V 1Ø 3W WITH 2-2P 60A CKT. BKR., 2-2P 60A CONTACTOR, 1-1P 15A CKT. BKR., 1-1P 30A CKT. BKR., 1-1P 60A CKT. BKR AND 1 BI-PASS SWITCH PER CONTACTOR. PROVIDE ADDITIONAL 2" CONDUIT STUB FROM CONTROLLER FOR FUTURE USE.
 - INSTALL 3" CONDUIT WITH 25 PAIR #22 AWG INTERCONNECT CABLE TO CABINET AT CHARLESTON/4TH INTERSECTION, APPROXIMATELY 1900 FEET, AND TO CABINET AT WYOMING/LAS VEGAS INTERSECTION, APPROXIMATELY 550 FEET. INSTALL #5 PULL BOXES ALONG CONDUIT RUN AT INTERVALS NOT EXCEEDING 500'.
 - THRU LANE SIGNAL HEADS SHALL HAVE GREEN ARROW (POINTING UP), YELLOW BALL AND RED BALL.



CONDUIT AND NEW WIRE SCHEDULE																					
WIRE & CABLE	FROM	TO	CONDUIT																		
			▲	▲	▲	▲	▲	▲	▲	▲	▲	▲	▲	▲	▲	▲	▲	▲			
PER NEC	SERVICE POINT	SERVICE PEDESTAL																			X
2-#2 AWG, 1-#4 AWG POWER CABLE	AUXILIARY POWER	CABINET	X																		X
2-#2 AWG, 1-#4 AWG	SERVICE PEDESTAL	AUXILIARY POWER SOURCE																			X
1-25 COND. #14 AWG	CABINET	POLE A	X	X	X	X															
2-#10 AWG	CABINET	POLE B	X	X	X	X														X	X
1-15 COND. #14 AWG	CABINET	POLE C	X	X	X	X															
1-25 COND. #14 AWG	CABINET	POLE D	X	X	X	X															
2-#10 AWG	CABINET	POLE D	X	X	X	X															
2 LOOP LEAD	CABINET	LOOPS 8A,8B	X																		X
3 LOOP LEAD	CABINET	LOOPS 6A,6B,6C	X	X	X	X															X
OPTICOM CABLE	CABINET	POLE A	X	X	X	X															
OPTICOM CABLE	CABINET	POLE C	X	X	X	X															
25 PAIR #22 AWG INTERCONNECT CABLE	CABINET	CABINETS AT 4TH/CHARLESTON & WYOMING/LAS VEGAS INTERSECTIONS																			X
CONDUIT SIZE (INCHES)			2-3"	3-3"	3-3"	3-3"	3-3"	3-3"	3-3"	3-3"	3-3"	3-3"	3-3"	3-3"	3-3"	3-3"	3-3"	3-3"	3-3"	3-3"	3-3"

- NOTES:**
- A #8 GREEN BOND GROUND WIRE SHALL BE RUN FROM THE CONTROLLER CABINET TO THE BASE OF EACH NEW POLE.
 - CONDUIT SIZE DESIGNATES NEW CONDUIT TO BE INSTALLED BY CONTRACTOR.
 - ALL CABLE SHALL BE RUN FROM TERMINAL TO TERMINAL WITHOUT SPLICING.
 - OPTICOM CABLE SHALL BE 3 PAIR #20 CABLE, 3M MODEL 138. OPTICOM PHASE SELECTOR SHALL BE 3M MODEL 562.

▲	MEDIAN ISLAND GEOMETRICS REVISED	12-27-96	DLA
NO.	REVISIONS	DATE	BY



Kimley-Horn and Associates, Inc.
Las Vegas, Nevada © 1996

DESIGNED BY CPT
DRAWN BY CPT
CHECKED BY [Signature]
NOTE BOOK NO.



DOWNTOWN CORRIDOR IMPROVEMENTS
CITY OF LAS VEGAS DEPT. OF PUBLIC WORKS
LAS VEGAS, NEVADA

DATE 6/96
SCALE 1"=20'

SIGNAL SYSTEM FOR LAS VEGAS BOULEVARD AT 4TH STREET

DWG. NO. 107-V-2288B
FILE NO. 9903.02
SHEET 39 OF 46
TS-4

