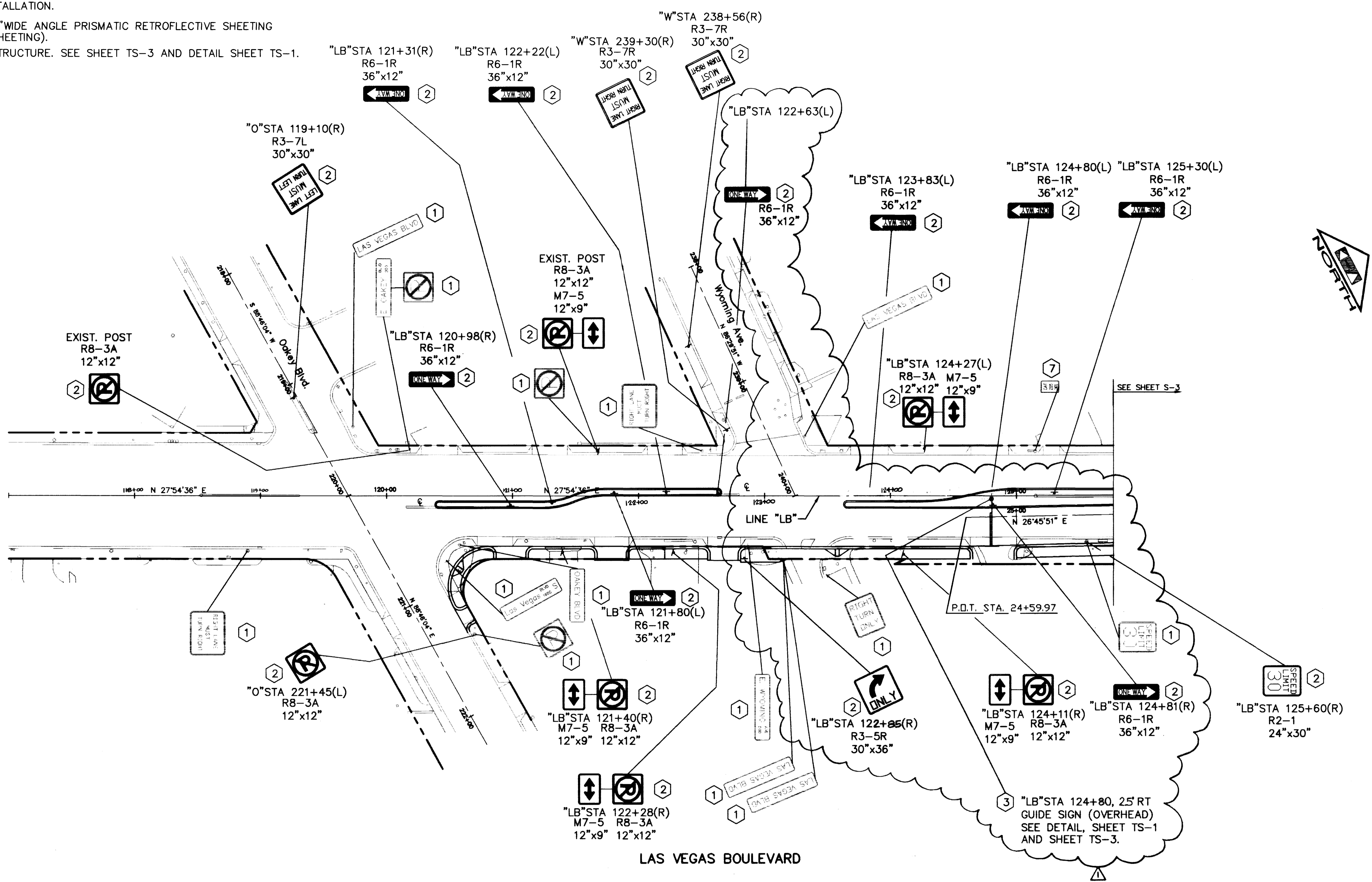


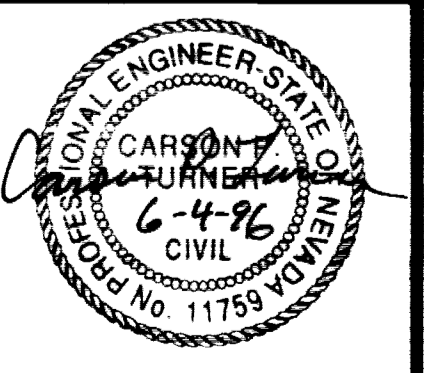
- 1 REMOVE AND SALVAGE EXISTING SIGN INSTALLATION.
- 2 PROVIDE AND INSTALL NEW SIGN(S) WITH "WIDE ANGLE PRISMATIC RETROFLECTIVE SHEETING FOR VISUAL IMPACT PERFORMANCE"(VIP SHEETING).
- 3 INSTALL OVERHEAD SIGN AND SUPPORT STRUCTURE. SEE SHEET TS-3 AND DETAIL SHEET TS-1.
- 1 EXISTING SIGN INSTALLATION TO REMAIN.



Time: 10:00:00.0  
 Date: 05/07/1996  
 Drawing File: k:\990302\PH2\S-2

Avoid cutting underground utility lines. It's costly.  
**Call before you Dig.**  
 1-800-227-2600  
UNDERGROUND SERVICE ALERT (USA)

NO.	REVISIONS	DATE	BY



**Kimley-Horn and Associates, Inc.**  
 Las Vegas, Nevada © 1996

DESIGNED BY CPT  
 DRAWN BY CDR  
 CHECKED BY *afp*  
 NOTE BOOK NO.



**DOWNTOWN CORRIDOR IMPROVEMENTS**  
 CITY OF LAS VEGAS DEPT. OF PUBLIC WORKS  
 LAS VEGAS, NEVADA

DATE 6/96  
 SCALE 1"=40'

**SIGNING PLAN**  
 "LB" STA. 124+59.97 TO "LB" STA. 125+77

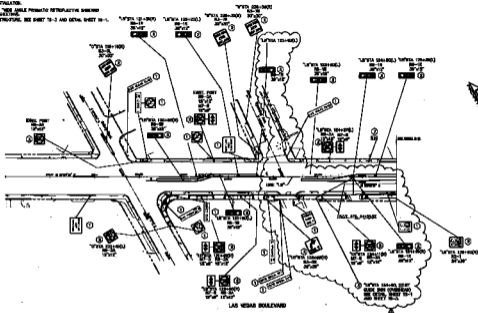
DWG. NO. 107-V-2288B  
 FILE NO. 9903.02  
 SHEET 27 OF 46  
**S-2**

3 244



REMOVE AND REINSTALL EXISTING SIGN INSTALLATION.

REMOVE THE EXISTING SIGN MOUNTS WITH 70% ANGLE PORTS AND RETROREFLECTIVE SHEETING FOR VISUAL IMPACT PERFORMANCE (VAP) SHEETING.  
 INSTALL OVERLAP SIGN AND SUPPORT STRUCTURE. SEE SHEET 12-1 AND DETAIL SHEET 12-1.  
 EXISTING SIGN INSTALLATION TO REMAIN.



12-1200



DESIGNED BY: GPT  
 DRAWN BY: GPT  
 CHECKED BY: GPT  
 DATE: 08/14/11



DEPARTMENT OF PUBLIC WORKS  
 CITY OF LAS VEGAS DEPT. OF PUBLIC WORKS  
 LAS VEGAS, NEVADA

SCALE: 1"=40'  
 DATE: 11/11/11

**SIGNING PLAN**  
 12-1200-1201 TO 12-1200-1207



DATE: 08/14/11  
 DRAWN BY: GPT  
 CHECKED BY: GPT  
 SHEET 12 OF 12  
 S-2