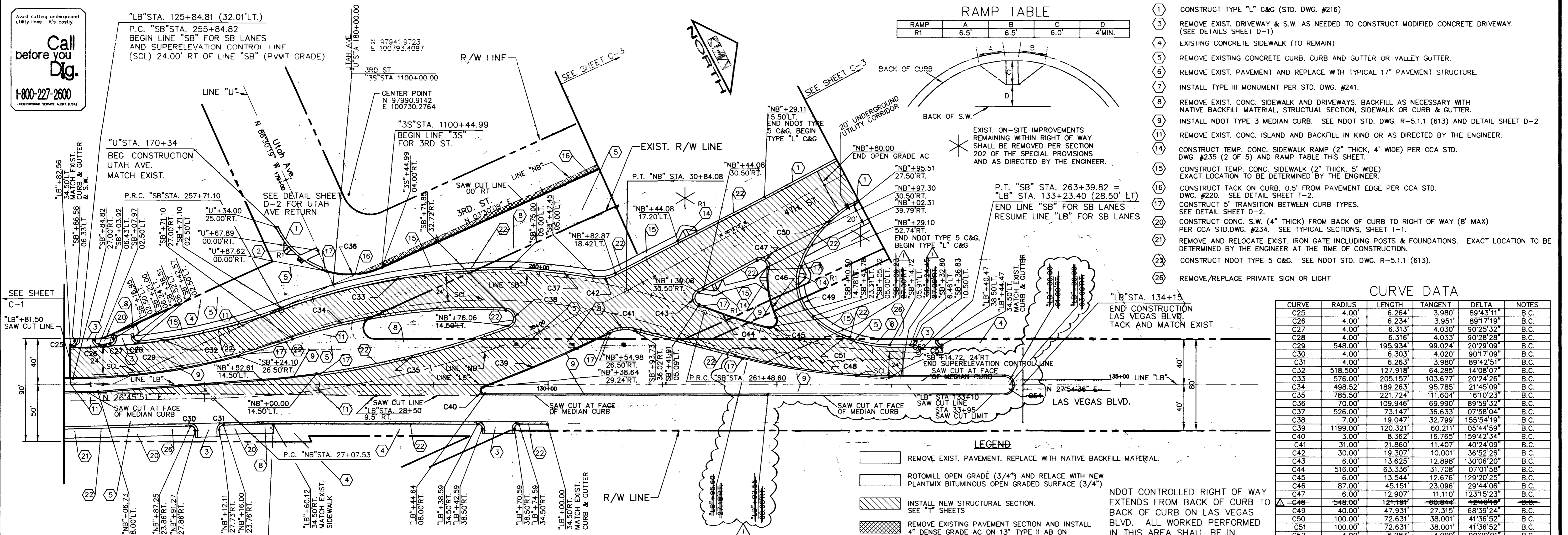


Call before you Dig.  
1-800-227-2600  
UNDERGROUND SERVICE ALERT (USA)

"LB" STA. 125+84.81 (32.01' LT.)  
P.C. "SB" STA. 255+84.82  
BEGIN LINE "SB" FOR SB LANES  
AND SUPERELEVATION CONTROL LINE  
(SCL) 24.00' RT OF LINE "SB" (PVMT GRADE)

NZ 97341.3723  
E 100793.4097



**RAMP TABLE**

RAMP	A	B	C	D
RT	6.5'	6.5'	6.0'	4' MIN.

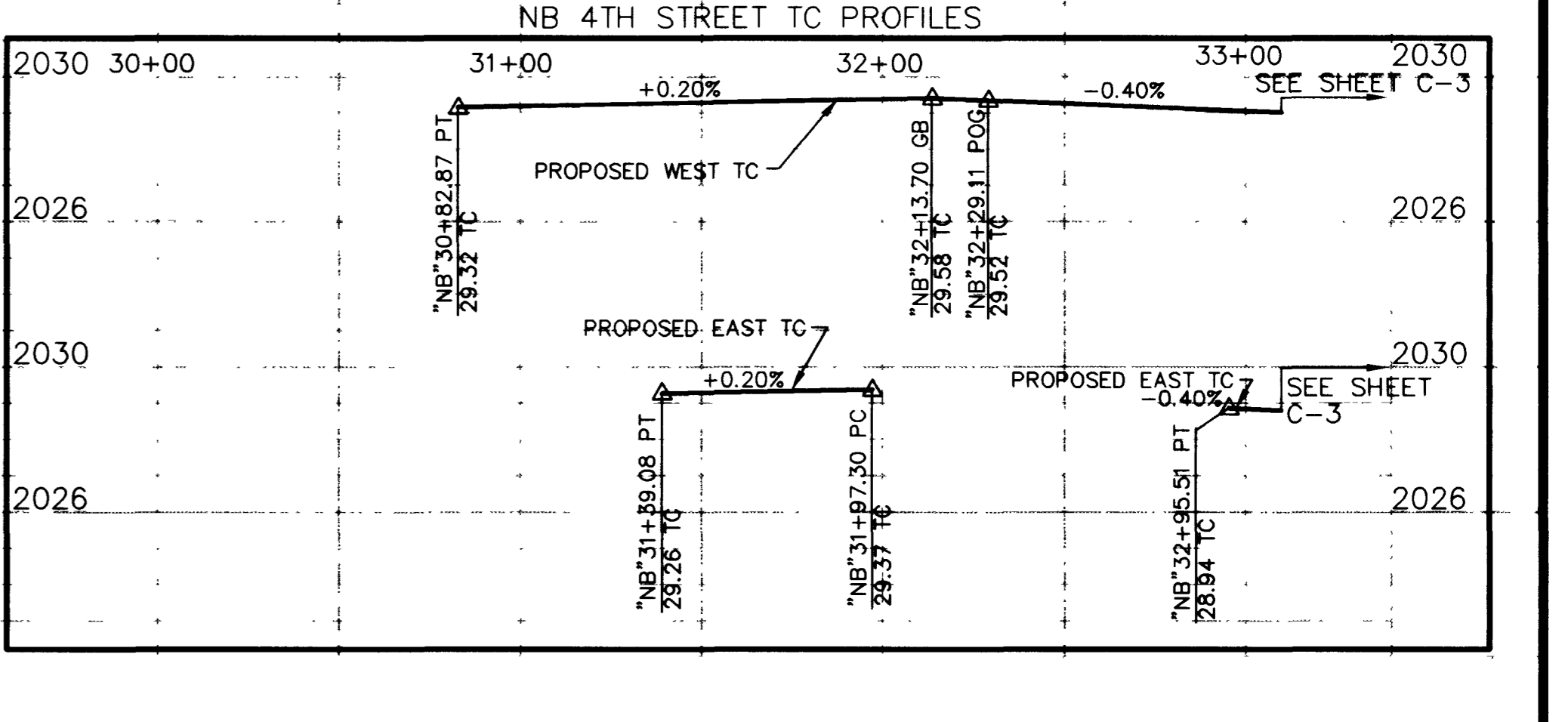
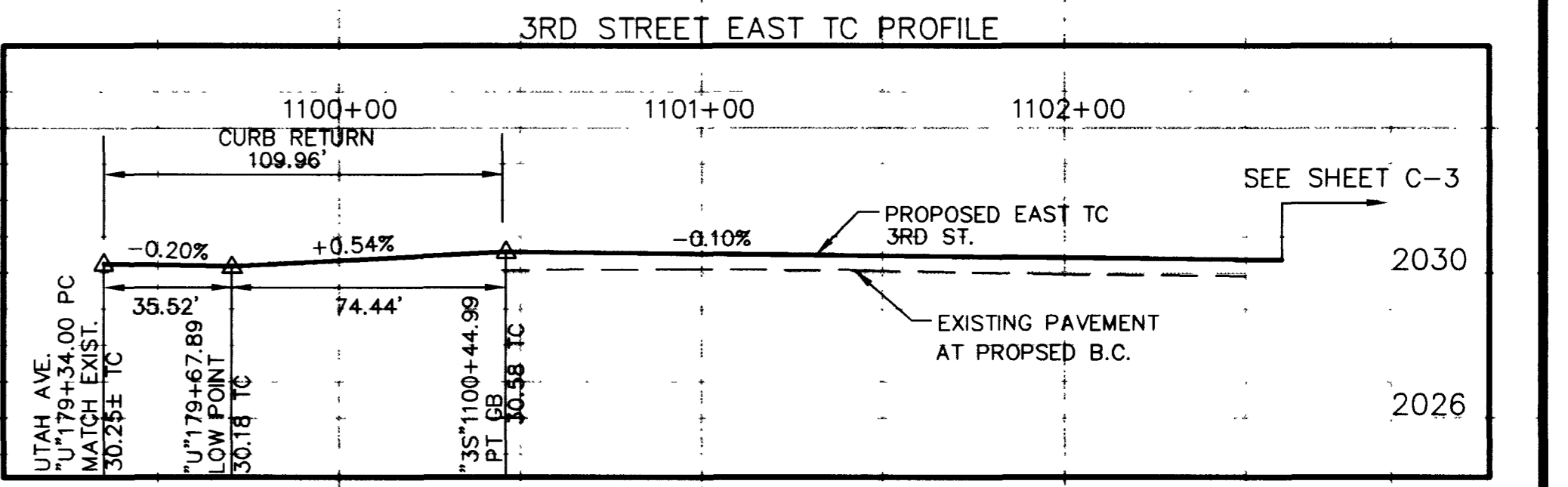
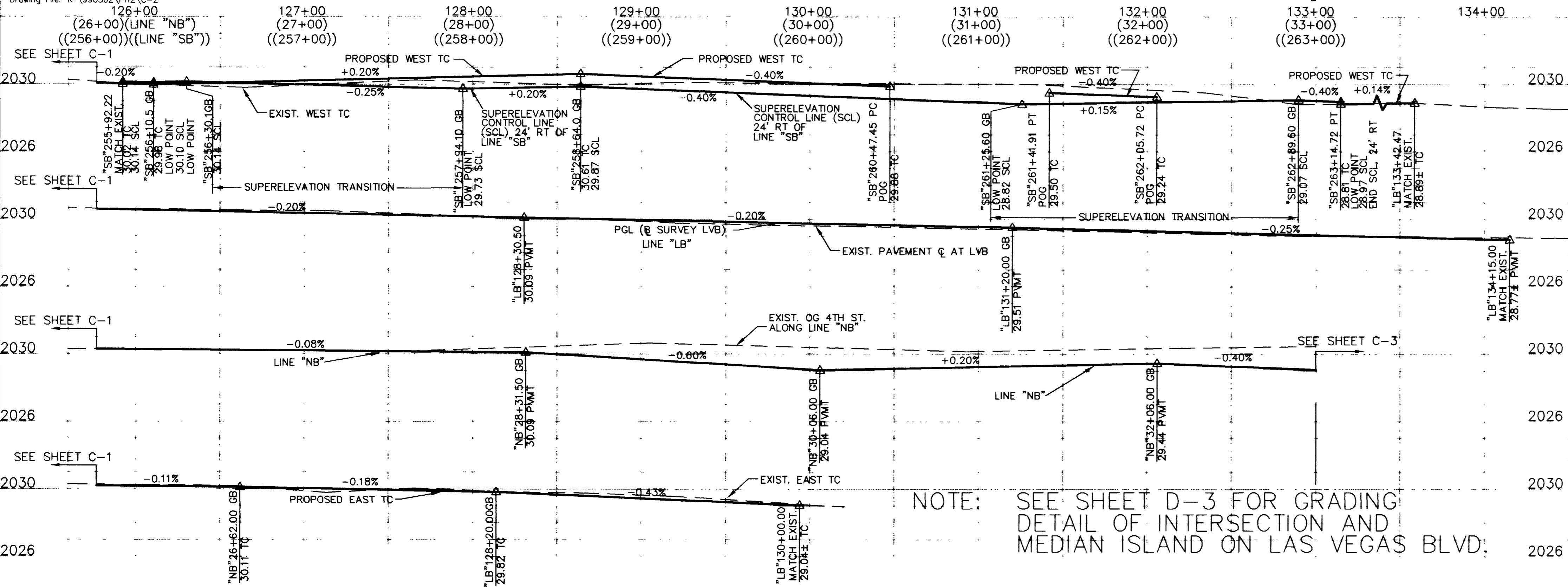
- 1 CONSTRUCT TYPE "L" C&G (STD. DWG. #216)
- 3 REMOVE EXIST. DRIVEWAY & S.W. AS NEEDED TO CONSTRUCT MODIFIED CONCRETE DRIVEWAY. (SEE DETAILS SHEET D-1)
- 4 EXISTING CONCRETE SIDEWALK (TO REMAIN)
- 5 REMOVE EXISTING CONCRETE CURB, CURB AND GUTTER OR VALLEY GUTTER.
- 6 REMOVE EXIST. PAVEMENT AND REPLACE WITH TYPICAL 17" PAVEMENT STRUCTURE.
- 7 INSTALL TYPE III MONUMENT PER STD. DWG. #241.
- 8 REMOVE EXIST. CONC. SIDEWALK AND DRIVEWAYS, BACKFILL AS NECESSARY WITH NATIVE BACKFILL MATERIAL, STRUCTURAL SECTION, SIDEWALK OR CURB & GUTTER.
- 9 INSTALL NDOT TYPE 3 MEDIAN CURB. SEE NDOT STD. DWG. R-5.1.1 (613) AND DETAIL SHEET D-2
- 11 REMOVE EXIST. CONC. ISLAND AND BACKFILL IN KIND OR AS DIRECTED BY THE ENGINEER.
- 14 CONSTRUCT TEMP. CONC. SIDEWALK RAMP (2" THICK, 4' WIDE) PER CCA STD. DWG. #235 (2 OF 5) AND RAMP TABLE THIS SHEET.
- 15 CONSTRUCT TEMP. CONC. SIDEWALK RAMP (2" THICK, 5' WIDE) EXACT LOCATION TO BE DETERMINED BY THE ENGINEER.
- 16 CONSTRUCT TACK ON CURB, 0.5' FROM PAVEMENT EDGE PER CCA STD. DWG. #220. SEE DETAIL SHEET T-2.
- 17 CONSTRUCT 5' TRANSITION BETWEEN CURB TYPES. SEE DETAIL SHEET D-2.
- 20 CONSTRUCT CONC. S.W. (4" THICK) FROM BACK OF CURB TO RIGHT OF WAY (8' MAX) PER CCA STD. DWG. #234. SEE TYPICAL SECTIONS, SHEET T-1.
- 21 REMOVE AND RELOCATE EXIST. IRON GATE INCLUDING POSTS & FOUNDATIONS. EXACT LOCATION TO BE DETERMINED BY THE ENGINEER AT THE TIME OF CONSTRUCTION.
- 22 CONSTRUCT NDOT TYPE 5 C&G. SEE NDOT STD. DWG. R-5.1.1 (613).
- 26 REMOVE/REPLACE PRIVATE SIGN OR LIGHT

**CURVE DATA**

CURVE	RADIUS	LENGTH	TANGENT	DELTA	NOTES
C25	4.00'	6.264'	3.980'	89°43'11"	B.C.
C26	4.00'	6.234'	3.951'	89°17'19"	B.C.
C27	4.00'	6.313'	4.030'	90°25'32"	B.C.
C28	4.00'	6.316'	4.033'	90°28'28"	B.C.
C29	548.00'	195.934'	99.024'	20°29'09"	B.C.
C30	4.00'	6.303'	4.020'	90°17'09"	B.C.
C31	4.00'	6.263'	3.980'	89°42'51"	B.C.
C32	518.500'	127.918'	64.285'	14°08'07"	B.C.
C33	576.00'	205.157'	103.677'	20°24'26"	B.C.
C34	498.52'	189.263'	95.785'	21°45'09"	B.C.
C35	785.50'	221.724'	111.604'	16°10'23"	B.C.
C36	70.00'	109.946'	69.990'	89°59'32"	B.C.
C37	526.00'	73.147'	36.633'	07°58'04"	B.C.
C38	7.00'	19.047'	32.799'	155°54'19"	B.C.
C39	1199.00'	120.321'	60.211'	05°44'59"	B.C.
C40	3.00'	8.362'	16.765'	159°42'34"	B.C.
C41	31.00'	21.860'	11.407'	40°24'09"	B.C.
C42	30.00'	19.307'	10.001'	36°52'26"	B.C.
C43	6.00'	13.625'	12.898'	130°06'20"	B.C.
C44	518.00'	63.336'	31.708'	07°01'58"	B.C.
C45	67.00'	13.544'	12.678'	129°20'25"	B.C.
C46	87.00'	45.151'	23.096'	29°44'06"	B.C.
C47	6.00'	12.907'	11.110'	123°15'23"	B.C.
C48	548.00'	121.181'	60.844'	12°40'41"	B.C.
C49	40.00'	47.931'	27.315'	68°39'24"	B.C.
C50	100.00'	72.631'	38.001'	41°36'52"	B.C.
C51	100.00'	72.631'	38.001'	41°36'52"	B.C.
C52	4.00'	6.283'	4.000'	90°00'01"	B.C.
C53	4.00'	6.283'	4.000'	89°59'59"	B.C.
C54	4.00'	6.283'	4.000'	89°59'59"	B.C.

- LEGEND**
- REMOVE EXIST. PAVEMENT. REPLACE WITH NATIVE BACKFILL MATERIAL.
  - ROTO-MILL OPEN GRADE (3/4") AND RELAY WITH NEW PLANT MIX BITUMINOUS OPEN GRADED SURFACE (3/4")
  - INSTALL NEW STRUCTURAL SECTION. SEE "T" SHEETS
  - REMOVE EXISTING PAVEMENT SECTION AND INSTALL 4" DENSE GRADE AC ON 13" TYPE II AB ON COMPACTED O.G.
  - STATION AND OFFSET CURB AND GUTTER CALLOUTS

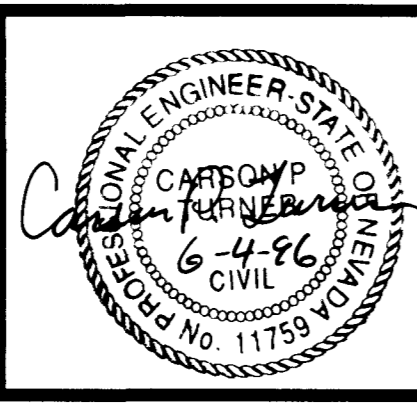
**4TH STREET/LAS VEGAS BOULEVARD INTERSECTION**  
(A 10' CONSTRUCTION EASEMENT SHALL BE PROVIDED ALONG THE EAST SIDE OF LAS VEGAS BLVD.)



NOTE: SEE SHEET D-3 FOR GRADING DETAIL OF INTERSECTION AND MEDIAN ISLAND ON LAS VEGAS BLVD.

REVISIONS

NO.	REVISIONS	DATE	BY
1	MEDIAN ISLAND GEOMETRICS REVISED	12-23-96	DLA



**Kimley-Horn and Associates, Inc.**  
Las Vegas, Nevada © 1996

DESIGNED BY CPT  
DRAWN BY CDR  
CHECKED BY CPT  
NOTE BOOK NO.

**CITY OF LAS VEGAS**  
DOWNTOWN CORRIDOR IMPROVEMENTS  
CITY OF LAS VEGAS DEPT. OF PUBLIC WORKS  
LAS VEGAS, NEVADA

DATE 6/96  
SCALE H 1"=40'  
V 1"=4'

**PLAN AND PROFILE**  
"LB" STA. 125+77 TO "LB" STA. 134+15  
DWG. NO. 107-V-2288B  
FILE NO. 9903.02  
SHEET 15 OF 46  
C-2

