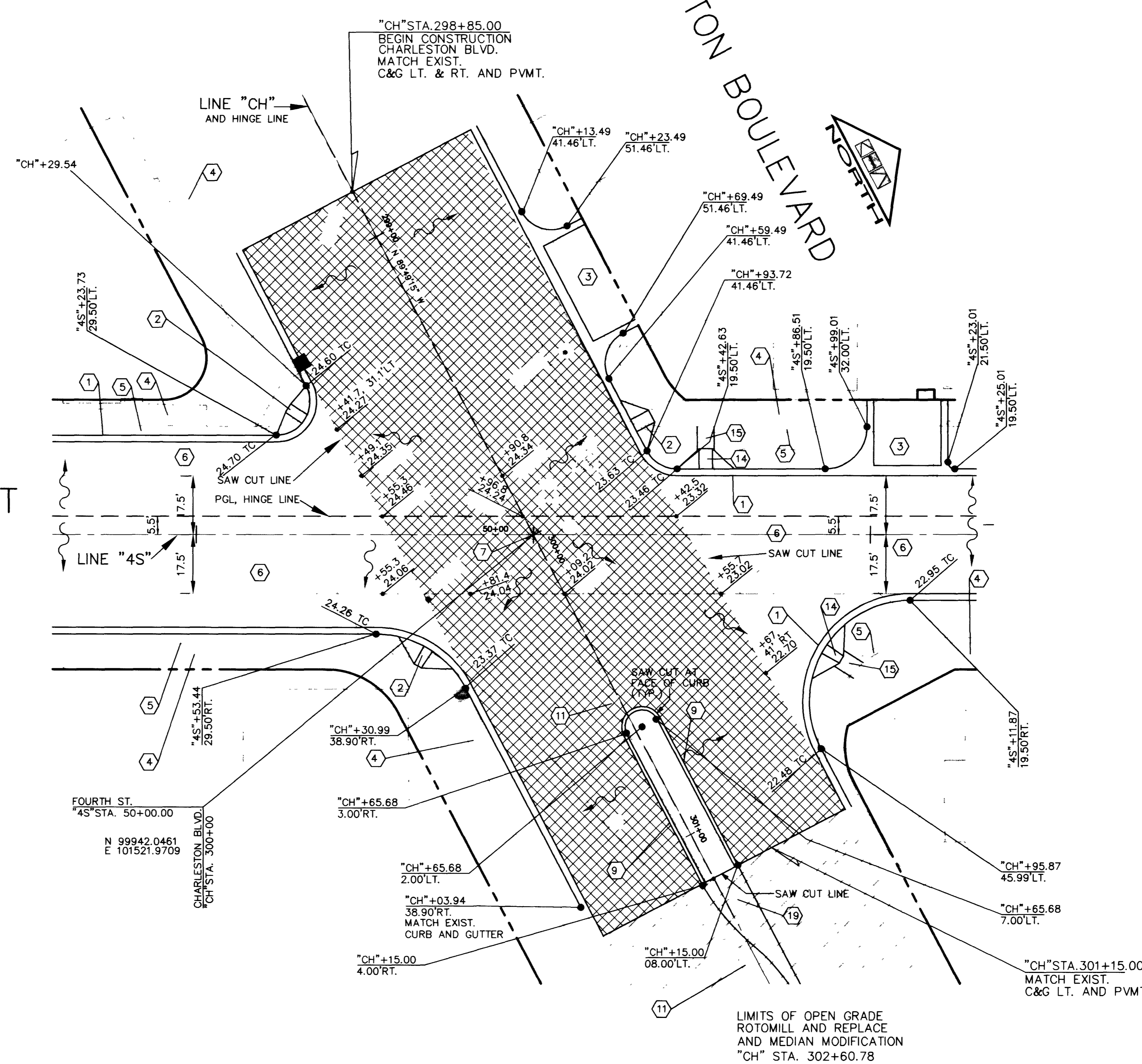


CHARLESTON BOULEVARD



4TH STREET

NDOT CONTROLLED RIGHT OF WAY EXTENDS FROM BACK OF CURB TO BACK OF CURB ON CHARLESTON BLVD. ALL WORKED PERFORMED IN THIS AREA SHALL BE IN CONFORMANCE WITH THE NDOT ENCROACHMENT PERMIT.

- ① CONSTRUCT TYPE "L" C&G (STD. DWG. #216)
- ② REMOVE EXIST. SW AS NECESSARY TO INSTALL SW RAMP PER STD. DWG. #235 (2 OF 5) CASE II. SEE SHEET C-4 FOR RAMP TABLE.
- ③ REMOVE EXIST. DRIVEWAY & S.W. AS NEEDED TO CONSTRUCT MODIFIED CONCRETE DRIVEWAY. (SEE DETAILS SHEET D-1)
- ④ EXISTING CONCRETE SIDEWALK (TO REMAIN)
- ⑤ REMOVE EXISTING CONCRETE CURB, CURB AND GUTTER OR VALLEY GUTTER.
- ⑥ REMOVE EXIST. PAVEMENT AND REPLACE WITH TYPICAL 17" PAVEMENT STRUCTURE.
- ⑦ INSTALL TYPE III MONUMENT PER STD. DWG. #241.
- ⑨ INSTALL NDOT TYPE 3 MEDIAN CURB. SEE NDOT STD. DWG. R-5.1.1 (613) AND DETAIL SHEET D-2
- ⑪ REMOVE EXIST. CONC. ISLAND AND BACKFILL IN KIND OR AS DIRECTED BY THE ENGINEER.
- ⑭ CONSTRUCT TEMP. CONC. SIDEWALK RAMP (2" THICK, 4' WIDE) PER CCA STD. DWG. #235 (2 OF 5). SEE SHEET C-4 FOR RAMP TABLE.
- ⑮ CONSTRUCT TEMP. CONC. SIDEWALK (2" THICK, 5' WIDE). EXACT LOCATION TO BE DETERMINED BY THE ENGINEER.
- ⑲ INSTALL TACK ON ISLAND PER CCA STD. DWG. #221 AND DETAILS PER PLANS. SEE SHEET C-4 FOR LIMITS.

ROTOMILL OPEN GRADE (3/4") AND REPLACE WITH NEW PLANTMIX BITUMINOUS OPEN GRADED SURFACE (3/4") ON NEW PLANTMIX BITUMINOUS DENSE GRADE SURFACE (THICKNESS VARIES), SEE SHEET C-4.

ROTOMILL OPEN GRADE (3/4") AND REPLACE WITH NEW PLANTMIX BITUMINOUS OPEN GRADED SURFACE (3/4") SEE SHEET C-4 FOR LIMITS

REMOVE EXIST. PAVEMENT. REPLACE WITH NATIVE BACKFILL MATERIAL. LOCATIONS VARY 4S STA. 42+00 TO 4S STA. 51+45± AND MEDIAN ON CHARLESTON BLVD.

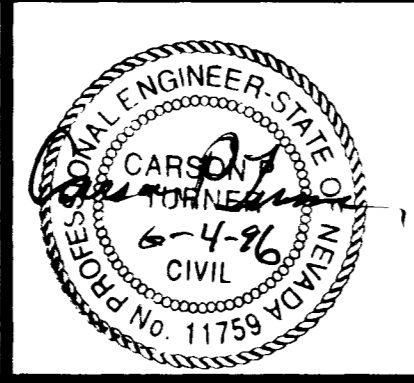
NOTES: SEE SHEET C-4 FOR STATION AND OFFSETS AND SHEETS C-4 & C-6 FOR PROFILE GRADES.  
ALL SPOT ELEVATIONS ARE PAVEMENT ELEVATIONS UNLESS OTHERWISE NOTED.  
ADD 2000 FEET TO ALL ELEVATIONS SHOWN  
SEE SHEET C-4 FOR CURVE DATA  
ALL STATIONING FOR SPOT ELEVATIONS ARE FROM LINE "4S" UNLESS OTHERWISE NOTED.

DROP INLET LOCATIONS  
 PAVEMENT SURFACE FLOW DIRECTION

4TH STREET/CHARLESTON BOULEVARD INTERSECTION

Time: 13:00:00  
Date: 4/18/1996  
File: K:\990302\PH2\D-3

NO.	REVISIONS	DATE	BY



**Kimley-Horn and Associates, Inc.**  
Las Vegas, Nevada © 1996

DESIGNED BY CDR  
DRAWN BY CDR  
CHECKED BY CPT  
NOTE BOOK NO.

**DOWNTOWN CORRIDOR IMPROVEMENTS**  
CITY OF LAS VEGAS DEPT. OF PUBLIC WORKS  
LAS VEGAS, NEVADA

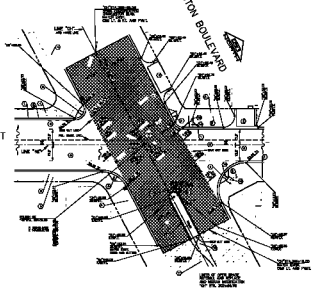
DATE 6/96  
SCALE 1"=20'

**4TH ST./LAS VEGAS BLVD.**  
**INTERSECTION**  
**GRADING DETAIL**

DWG. NO. 107-V-2288B  
FILE NO. 9903.02  
SHEET 11 OF 46  
**D-4**

CHARLESTON BOULEVARD

4TH STREET



NOT CONTROLLED RIGHT OF WAY  
 SETBACK FROM SIDE OF CURB TO  
 BACK OF CURB OR CORNER  
 ELEV. AS SHOWN OTHERWISE  
 IN THIS AREA SHALL BE IN  
 CONFORMANCE WITH THE MOST  
 RESTRICTIVE REGULATION.

- ① EXISTING 12" TO 18" (24" MAX. DIA.) PIPE
- ② EXISTING 18" TO 24" (36" MAX. DIA.) PIPE
- ③ EXISTING 24" TO 30" (48" MAX. DIA.) PIPE
- ④ EXISTING 30" TO 36" (60" MAX. DIA.) PIPE
- ⑤ EXISTING 36" TO 42" (72" MAX. DIA.) PIPE
- ⑥ EXISTING 42" TO 48" (84" MAX. DIA.) PIPE
- ⑦ EXISTING 48" TO 54" (96" MAX. DIA.) PIPE
- ⑧ EXISTING 54" TO 60" (108" MAX. DIA.) PIPE
- ⑨ EXISTING 60" TO 66" (120" MAX. DIA.) PIPE
- ⑩ EXISTING 66" TO 72" (132" MAX. DIA.) PIPE
- ⑪ EXISTING 72" TO 78" (144" MAX. DIA.) PIPE
- ⑫ EXISTING 78" TO 84" (168" MAX. DIA.) PIPE
- ⑬ EXISTING 84" TO 90" (180" MAX. DIA.) PIPE
- ⑭ EXISTING 90" TO 96" (216" MAX. DIA.) PIPE
- ⑮ EXISTING 96" TO 102" (252" MAX. DIA.) PIPE
- ⑯ EXISTING 102" TO 108" (288" MAX. DIA.) PIPE
- ⑰ EXISTING 108" TO 114" (324" MAX. DIA.) PIPE
- ⑱ EXISTING 114" TO 120" (360" MAX. DIA.) PIPE
- ⑲ EXISTING 120" TO 126" (432" MAX. DIA.) PIPE
- ⑳ EXISTING 126" TO 132" (504" MAX. DIA.) PIPE
- ㉑ EXISTING 132" TO 138" (576" MAX. DIA.) PIPE
- ㉒ EXISTING 138" TO 144" (648" MAX. DIA.) PIPE
- ㉓ EXISTING 144" TO 150" (720" MAX. DIA.) PIPE
- ㉔ EXISTING 150" TO 156" (792" MAX. DIA.) PIPE
- ㉕ EXISTING 156" TO 162" (864" MAX. DIA.) PIPE
- ㉖ EXISTING 162" TO 168" (936" MAX. DIA.) PIPE
- ㉗ EXISTING 168" TO 174" (1008" MAX. DIA.) PIPE
- ㉘ EXISTING 174" TO 180" (1080" MAX. DIA.) PIPE
- ㉙ EXISTING 180" TO 186" (1152" MAX. DIA.) PIPE
- ㉚ EXISTING 186" TO 192" (1224" MAX. DIA.) PIPE
- ㉛ EXISTING 192" TO 198" (1296" MAX. DIA.) PIPE
- ㉜ EXISTING 198" TO 204" (1368" MAX. DIA.) PIPE
- ㉝ EXISTING 204" TO 210" (1440" MAX. DIA.) PIPE
- ㉞ EXISTING 210" TO 216" (1512" MAX. DIA.) PIPE
- ㉟ EXISTING 216" TO 222" (1584" MAX. DIA.) PIPE
- ㊱ EXISTING 222" TO 228" (1656" MAX. DIA.) PIPE
- ㊲ EXISTING 228" TO 234" (1728" MAX. DIA.) PIPE
- ㊳ EXISTING 234" TO 240" (1800" MAX. DIA.) PIPE
- ㊴ EXISTING 240" TO 246" (1872" MAX. DIA.) PIPE
- ㊵ EXISTING 246" TO 252" (1944" MAX. DIA.) PIPE
- ㊶ EXISTING 252" TO 258" (2016" MAX. DIA.) PIPE
- ㊷ EXISTING 258" TO 264" (2088" MAX. DIA.) PIPE
- ㊸ EXISTING 264" TO 270" (2160" MAX. DIA.) PIPE
- ㊹ EXISTING 270" TO 276" (2232" MAX. DIA.) PIPE
- ㊺ EXISTING 276" TO 282" (2304" MAX. DIA.) PIPE
- ㊻ EXISTING 282" TO 288" (2376" MAX. DIA.) PIPE
- ㊼ EXISTING 288" TO 294" (2448" MAX. DIA.) PIPE
- ㊽ EXISTING 294" TO 300" (2520" MAX. DIA.) PIPE
- ㊾ EXISTING 300" TO 306" (2592" MAX. DIA.) PIPE
- ㊿ EXISTING 306" TO 312" (2664" MAX. DIA.) PIPE
- ⓪ EXISTING 312" TO 318" (2736" MAX. DIA.) PIPE
- ⓫ EXISTING 318" TO 324" (2808" MAX. DIA.) PIPE
- ⓬ EXISTING 324" TO 330" (2880" MAX. DIA.) PIPE
- ⓭ EXISTING 330" TO 336" (2952" MAX. DIA.) PIPE
- ⓮ EXISTING 336" TO 342" (3024" MAX. DIA.) PIPE
- ⓯ EXISTING 342" TO 348" (3096" MAX. DIA.) PIPE
- ⓰ EXISTING 348" TO 354" (3168" MAX. DIA.) PIPE
- ⓱ EXISTING 354" TO 360" (3240" MAX. DIA.) PIPE
- ⓲ EXISTING 360" TO 366" (3312" MAX. DIA.) PIPE
- ⓳ EXISTING 366" TO 372" (3384" MAX. DIA.) PIPE
- ⓴ EXISTING 372" TO 378" (3456" MAX. DIA.) PIPE
- ⓵ EXISTING 378" TO 384" (3528" MAX. DIA.) PIPE
- ⓶ EXISTING 384" TO 390" (3600" MAX. DIA.) PIPE
- ⓷ EXISTING 390" TO 396" (3672" MAX. DIA.) PIPE
- ⓸ EXISTING 396" TO 402" (3744" MAX. DIA.) PIPE
- ⓹ EXISTING 402" TO 408" (3816" MAX. DIA.) PIPE
- ⓺ EXISTING 408" TO 414" (3888" MAX. DIA.) PIPE
- ⓻ EXISTING 414" TO 420" (3960" MAX. DIA.) PIPE
- ⓼ EXISTING 420" TO 426" (4032" MAX. DIA.) PIPE
- ⓽ EXISTING 426" TO 432" (4104" MAX. DIA.) PIPE
- ⓾ EXISTING 432" TO 438" (4176" MAX. DIA.) PIPE
- ⓿ EXISTING 438" TO 444" (4248" MAX. DIA.) PIPE
- Ⓚ EXISTING 444" TO 450" (4320" MAX. DIA.) PIPE
- Ⓛ EXISTING 450" TO 456" (4392" MAX. DIA.) PIPE
- Ⓠ EXISTING 456" TO 462" (4464" MAX. DIA.) PIPE
- Ⓡ EXISTING 462" TO 468" (4536" MAX. DIA.) PIPE
- Ⓢ EXISTING 468" TO 474" (4608" MAX. DIA.) PIPE
- Ⓣ EXISTING 474" TO 480" (4680" MAX. DIA.) PIPE
- Ⓤ EXISTING 480" TO 486" (4752" MAX. DIA.) PIPE
- Ⓥ EXISTING 486" TO 492" (4824" MAX. DIA.) PIPE
- Ⓦ EXISTING 492" TO 498" (4896" MAX. DIA.) PIPE
- Ⓧ EXISTING 498" TO 504" (4968" MAX. DIA.) PIPE
- Ⓨ EXISTING 504" TO 510" (5040" MAX. DIA.) PIPE
- Ⓩ EXISTING 510" TO 516" (5112" MAX. DIA.) PIPE
- ⓐ EXISTING 516" TO 522" (5184" MAX. DIA.) PIPE
- ⓑ EXISTING 522" TO 528" (5256" MAX. DIA.) PIPE
- ⓓ EXISTING 528" TO 534" (5328" MAX. DIA.) PIPE
- ⓔ EXISTING 534" TO 540" (5400" MAX. DIA.) PIPE
- ⓕ EXISTING 540" TO 546" (5472" MAX. DIA.) PIPE
- ⓖ EXISTING 546" TO 552" (5544" MAX. DIA.) PIPE
- ⓗ EXISTING 552" TO 558" (5616" MAX. DIA.) PIPE
- ⓘ EXISTING 558" TO 564" (5688" MAX. DIA.) PIPE
- ⓙ EXISTING 564" TO 570" (5760" MAX. DIA.) PIPE
- ⓑ EXISTING 570" TO 576" (5832" MAX. DIA.) PIPE
- ⓓ EXISTING 576" TO 582" (5904" MAX. DIA.) PIPE
- ⓔ EXISTING 582" TO 588" (5976" MAX. DIA.) PIPE
- ⓕ EXISTING 588" TO 594" (6048" MAX. DIA.) PIPE
- ⓖ EXISTING 594" TO 600" (6120" MAX. DIA.) PIPE
- ⓗ EXISTING 600" TO 606" (6192" MAX. DIA.) PIPE
- ⓘ EXISTING 606" TO 612" (6264" MAX. DIA.) PIPE
- ⓙ EXISTING 612" TO 618" (6336" MAX. DIA.) PIPE
- ⓑ EXISTING 618" TO 624" (6408" MAX. DIA.) PIPE
- ⓓ EXISTING 624" TO 630" (6480" MAX. DIA.) PIPE
- ⓔ EXISTING 630" TO 636" (6552" MAX. DIA.) PIPE
- ⓕ EXISTING 636" TO 642" (6624" MAX. DIA.) PIPE
- ⓖ EXISTING 642" TO 648" (6696" MAX. DIA.) PIPE
- ⓗ EXISTING 648" TO 654" (6768" MAX. DIA.) PIPE
- ⓘ EXISTING 654" TO 660" (6840" MAX. DIA.) PIPE
- ⓙ EXISTING 660" TO 666" (6912" MAX. DIA.) PIPE
- ⓑ EXISTING 666" TO 672" (6984" MAX. DIA.) PIPE
- ⓓ EXISTING 672" TO 678" (7056" MAX. DIA.) PIPE
- ⓔ EXISTING 678" TO 684" (7128" MAX. DIA.) PIPE
- ⓕ EXISTING 684" TO 690" (7200" MAX. DIA.) PIPE
- ⓖ EXISTING 690" TO 696" (7272" MAX. DIA.) PIPE
- ⓗ EXISTING 696" TO 702" (7344" MAX. DIA.) PIPE
- ⓘ EXISTING 702" TO 708" (7416" MAX. DIA.) PIPE
- ⓙ EXISTING 708" TO 714" (7488" MAX. DIA.) PIPE
- ⓑ EXISTING 714" TO 720" (7560" MAX. DIA.) PIPE
- ⓓ EXISTING 720" TO 726" (7632" MAX. DIA.) PIPE
- ⓔ EXISTING 726" TO 732" (7704" MAX. DIA.) PIPE
- ⓕ EXISTING 732" TO 738" (7776" MAX. DIA.) PIPE
- ⓖ EXISTING 738" TO 744" (7848" MAX. DIA.) PIPE
- ⓗ EXISTING 744" TO 750" (7920" MAX. DIA.) PIPE
- ⓘ EXISTING 750" TO 756" (7992" MAX. DIA.) PIPE
- ⓙ EXISTING 756" TO 762" (8064" MAX. DIA.) PIPE
- ⓑ EXISTING 762" TO 768" (8136" MAX. DIA.) PIPE
- ⓓ EXISTING 768" TO 774" (8208" MAX. DIA.) PIPE
- ⓔ EXISTING 774" TO 780" (8280" MAX. DIA.) PIPE
- ⓕ EXISTING 780" TO 786" (8352" MAX. DIA.) PIPE
- ⓖ EXISTING 786" TO 792" (8424" MAX. DIA.) PIPE
- ⓗ EXISTING 792" TO 798" (8496" MAX. DIA.) PIPE
- ⓘ EXISTING 798" TO 804" (8568" MAX. DIA.) PIPE
- ⓙ EXISTING 804" TO 810" (8640" MAX. DIA.) PIPE
- ⓑ EXISTING 810" TO 816" (8712" MAX. DIA.) PIPE
- ⓓ EXISTING 816" TO 822" (8784" MAX. DIA.) PIPE
- ⓔ EXISTING 822" TO 828" (8856" MAX. DIA.) PIPE
- ⓕ EXISTING 828" TO 834" (8928" MAX. DIA.) PIPE
- ⓖ EXISTING 834" TO 840" (9000" MAX. DIA.) PIPE
- ⓗ EXISTING 840" TO 846" (9072" MAX. DIA.) PIPE
- ⓘ EXISTING 846" TO 852" (9144" MAX. DIA.) PIPE
- ⓙ EXISTING 852" TO 858" (9216" MAX. DIA.) PIPE
- ⓑ EXISTING 858" TO 864" (9288" MAX. DIA.) PIPE
- ⓓ EXISTING 864" TO 870" (9360" MAX. DIA.) PIPE
- ⓔ EXISTING 870" TO 876" (9432" MAX. DIA.) PIPE
- ⓕ EXISTING 876" TO 882" (9504" MAX. DIA.) PIPE
- ⓖ EXISTING 882" TO 888" (9576" MAX. DIA.) PIPE
- ⓗ EXISTING 888" TO 894" (9648" MAX. DIA.) PIPE
- ⓘ EXISTING 894" TO 900" (9720" MAX. DIA.) PIPE
- ⓙ EXISTING 900" TO 906" (9792" MAX. DIA.) PIPE
- ⓑ EXISTING 906" TO 912" (9864" MAX. DIA.) PIPE
- ⓓ EXISTING 912" TO 918" (9936" MAX. DIA.) PIPE
- ⓔ EXISTING 918" TO 924" (10008" MAX. DIA.) PIPE
- ⓕ EXISTING 924" TO 930" (10080" MAX. DIA.) PIPE
- ⓖ EXISTING 930" TO 936" (10152" MAX. DIA.) PIPE
- ⓗ EXISTING 936" TO 942" (10224" MAX. DIA.) PIPE
- ⓘ EXISTING 942" TO 948" (10296" MAX. DIA.) PIPE
- ⓙ EXISTING 948" TO 954" (10368" MAX. DIA.) PIPE
- ⓑ EXISTING 954" TO 960" (10440" MAX. DIA.) PIPE
- ⓓ EXISTING 960" TO 966" (10512" MAX. DIA.) PIPE
- ⓔ EXISTING 966" TO 972" (10584" MAX. DIA.) PIPE
- ⓕ EXISTING 972" TO 978" (10656" MAX. DIA.) PIPE
- ⓖ EXISTING 978" TO 984" (10728" MAX. DIA.) PIPE
- ⓗ EXISTING 984" TO 990" (10800" MAX. DIA.) PIPE
- ⓘ EXISTING 990" TO 996" (10872" MAX. DIA.) PIPE
- ⓙ EXISTING 996" TO 1002" (10944" MAX. DIA.) PIPE
- ⓑ EXISTING 1002" TO 1008" (11016" MAX. DIA.) PIPE
- ⓓ EXISTING 1008" TO 1014" (11088" MAX. DIA.) PIPE
- ⓔ EXISTING 1014" TO 1020" (11160" MAX. DIA.) PIPE
- ⓕ EXISTING 1020" TO 1026" (11232" MAX. DIA.) PIPE
- ⓖ EXISTING 1026" TO 1032" (11304" MAX. DIA.) PIPE
- ⓗ EXISTING 1032" TO 1038" (11376" MAX. DIA.) PIPE
- ⓘ EXISTING 1038" TO 1044" (11448" MAX. DIA.) PIPE
- ⓙ EXISTING 1044" TO 1050" (11520" MAX. DIA.) PIPE
- ⓑ EXISTING 1050" TO 1056" (11592" MAX. DIA.) PIPE
- ⓓ EXISTING 1056" TO 1062" (11664" MAX. DIA.) PIPE
- ⓔ EXISTING 1062" TO 1068" (11736" MAX. DIA.) PIPE
- ⓕ EXISTING 1068" TO 1074" (11808" MAX. DIA.) PIPE
- ⓖ EXISTING 1074" TO 1080" (11880" MAX. DIA.) PIPE
- ⓗ EXISTING 1080" TO 1086" (11952" MAX. DIA.) PIPE
- ⓘ EXISTING 1086" TO 1092" (12024" MAX. DIA.) PIPE
- ⓙ EXISTING 1092" TO 1098" (12096" MAX. DIA.) PIPE
- ⓑ EXISTING 1098" TO 1104" (12168" MAX. DIA.) PIPE
- ⓓ EXISTING 1104" TO 1110" (12240" MAX. DIA.) PIPE
- ⓔ EXISTING 1110" TO 1116" (12312" MAX. DIA.) PIPE
- ⓕ EXISTING 1116" TO 1122" (12384" MAX. DIA.) PIPE
- ⓖ EXISTING 1122" TO 1128" (12456" MAX. DIA.) PIPE
- ⓗ EXISTING 1128" TO 1134" (12528" MAX. DIA.) PIPE
- ⓘ EXISTING 1134" TO 1140" (12600" MAX. DIA.) PIPE
- ⓙ EXISTING 1140" TO 1146" (12672" MAX. DIA.) PIPE
- ⓑ EXISTING 1146" TO 1152" (12744" MAX. DIA.) PIPE
- ⓓ EXISTING 1152" TO 1158" (12816" MAX. DIA.) PIPE
- ⓔ EXISTING 1158" TO 1164" (12888" MAX. DIA.) PIPE
- ⓕ EXISTING 1164" TO 1170" (12960" MAX. DIA.) PIPE
- ⓖ EXISTING 1170" TO 1176" (13032" MAX. DIA.) PIPE
- ⓗ EXISTING 1176" TO 1182" (13104" MAX. DIA.) PIPE
- ⓘ EXISTING 1182" TO 1188" (13176" MAX. DIA.) PIPE
- ⓙ EXISTING 1188" TO 1194" (13248" MAX. DIA.) PIPE
- ⓑ EXISTING 1194" TO 1200" (13320" MAX. DIA.) PIPE
- ⓓ EXISTING 1200" TO 1206" (13392" MAX. DIA.) PIPE
- ⓔ EXISTING 1206" TO 1212" (13464" MAX. DIA.) PIPE
- ⓕ EXISTING 1212" TO 1218" (13536" MAX. DIA.) PIPE
- ⓖ EXISTING 1218" TO 1224" (13608" MAX. DIA.) PIPE
- ⓗ EXISTING 1224" TO 1230" (13680" MAX. DIA.) PIPE
- ⓘ EXISTING 1230" TO 1236" (13752" MAX. DIA.) PIPE
- ⓙ EXISTING 1236" TO 1242" (13824" MAX. DIA.) PIPE
- ⓑ EXISTING 1242" TO 1248" (13896" MAX. DIA.) PIPE
- ⓓ EXISTING 1248" TO 1254" (13968" MAX. DIA.) PIPE
- ⓔ EXISTING 1254" TO 1260" (14040" MAX. DIA.) PIPE
- ⓕ EXISTING 1260" TO 1266" (14112" MAX. DIA.) PIPE
- ⓖ EXISTING 1266" TO 1272" (14184" MAX. DIA.) PIPE
- ⓗ EXISTING 1272" TO 1278" (14256" MAX. DIA.) PIPE
- ⓘ EXISTING 1278" TO 1284" (14328" MAX. DIA.) PIPE
- ⓙ EXISTING 1284" TO 1290" (14400" MAX. DIA.) PIPE
- ⓑ EXISTING 1290" TO 1296" (14472" MAX. DIA.) PIPE
- ⓓ EXISTING 1296" TO 1302" (14544" MAX. DIA.) PIPE
- ⓔ EXISTING 1302" TO 1308" (14616" MAX. DIA.) PIPE
- ⓕ EXISTING 1308" TO 1314" (14688" MAX. DIA.) PIPE
- ⓖ EXISTING 1314" TO 1320" (14760" MAX. DIA.) PIPE
- ⓗ EXISTING 1320" TO 1326" (14832" MAX. DIA.) PIPE
- ⓘ EXISTING 1326" TO 1332" (14904" MAX. DIA.) PIPE
- ⓙ EXISTING 1332" TO 1338" (14976" MAX. DIA.) PIPE
- ⓑ EXISTING 1338" TO 1344" (15048" MAX. DIA.) PIPE
- ⓓ EXISTING 1344" TO 1350" (15120" MAX. DIA.) PIPE
- ⓔ EXISTING 1350" TO 1356" (15192" MAX. DIA.) PIPE
- ⓕ EXISTING 1356" TO 1362" (15264" MAX. DIA.) PIPE
- ⓖ EXISTING 1362" TO 1368" (15336" MAX. DIA.) PIPE
- ⓗ EXISTING 1368" TO 1374" (15408" MAX. DIA.) PIPE
- ⓘ EXISTING 1374" TO 1380" (15480" MAX. DIA.) PIPE
- ⓙ EXISTING 1380" TO 1386" (15552" MAX. DIA.) PIPE
- ⓑ EXISTING 1386" TO 1392" (15624" MAX. DIA.) PIPE
- ⓓ EXISTING 1392" TO 1398" (15696" MAX. DIA.) PIPE
- ⓔ EXISTING 1398" TO 1404" (15768" MAX. DIA.) PIPE
- ⓕ EXISTING 1404" TO 1410" (15840" MAX. DIA.) PIPE
- ⓖ EXISTING 1410" TO 1416" (15912" MAX. DIA.) PIPE
- ⓗ EXISTING 1416" TO 1422" (15984" MAX. DIA.) PIPE
- ⓘ EXISTING 1422" TO 1428" (16056" MAX. DIA.) PIPE
- ⓙ EXISTING 1428" TO 1434" (16128" MAX. DIA.) PIPE
- ⓑ EXISTING 1434" TO 1440" (16200" MAX. DIA.) PIPE
- ⓓ EXISTING 1440" TO 1446" (16272" MAX. DIA.) PIPE
- ⓔ EXISTING 1446" TO 1452" (16344" MAX. DIA.) PIPE
- ⓕ EXISTING 1452" TO 1458" (16416" MAX. DIA.) PIPE
- ⓖ EXISTING 1458" TO 1464" (16488" MAX. DIA.) PIPE
- ⓗ EXISTING 1464" TO 1470" (16560" MAX. DIA.) PIPE
- ⓘ EXISTING 1470" TO 1476" (16632" MAX. DIA.) PIPE
- ⓙ EXISTING 1476" TO 1482" (16704" MAX. DIA.) PIPE
- ⓑ EXISTING 1482" TO 1488" (16776" MAX. DIA.) PIPE
- ⓓ EXISTING 1488" TO 1494" (16848" MAX. DIA.) PIPE
- ⓔ EXISTING 1494" TO 1500" (16920" MAX. DIA.) PIPE
- ⓕ EXISTING 1500" TO 1506" (16992" MAX. DIA.) PIPE
- ⓖ EXISTING 1506" TO 1512" (17064" MAX. DIA.) PIPE
- ⓗ EXISTING 1512" TO 1518" (17136" MAX. DIA.) PIPE
- ⓘ EXISTING 1518" TO 1524" (17208" MAX. DIA.) PIPE
- ⓙ EXISTING 1524" TO 1530" (17280" MAX. DIA.) PIPE
- ⓑ EXISTING 1530" TO 1536" (17352" MAX. DIA.) PIPE
- ⓓ EXISTING 1536" TO 1542" (17424" MAX. DIA.) PIPE
- ⓔ EXISTING 1542" TO 1548" (17496" MAX. DIA.) PIPE
- ⓕ EXISTING 1548" TO 1554" (17568" MAX. DIA.) PIPE
- ⓖ EXISTING 1554" TO 1560" (17640" MAX. DIA.) PIPE
- ⓗ EXISTING 1560" TO 1566" (17712" MAX. DIA.) PIPE
- ⓘ EXISTING 1566" TO 1572" (17784" MAX. DIA.) PIPE
- ⓙ EXISTING 1572" TO 1578" (17856" MAX. DIA.) PIPE
- ⓑ EXISTING 1578" TO 1584" (17928" MAX. DIA.) PIPE
- ⓓ EXISTING 1584" TO 1590" (18000" MAX. DIA.) PIPE
- ⓔ EXISTING 1590" TO 1596" (18072" MAX. DIA.) PIPE
- ⓕ EXISTING 1596" TO 1602" (18144" MAX. DIA.) PIPE
- ⓖ EXISTING 1602" TO 1608" (18216" MAX. DIA.) PIPE
- ⓗ EXISTING 1608" TO 1614" (18288" MAX. DIA.) PIPE
- ⓘ EXISTING 1614" TO 1620" (18360" MAX. DIA.) PIPE
- ⓙ EXISTING 1620" TO 1626" (18432" MAX. DIA.) PIPE
- ⓑ EXISTING 1626" TO 1632" (18504" MAX. DIA.) PIPE
- ⓓ EXISTING 1632" TO 1638" (18576" MAX. DIA.) PIPE
- ⓔ EXISTING 1638" TO 1644" (18648" MAX. DIA.) PIPE
- ⓕ EXISTING 1644" TO 1650" (18720" MAX. DIA.) PIPE
- ⓖ EXISTING 1650" TO 1656" (18792" MAX. DIA.) PIPE
- ⓗ EXISTING 1656" TO 1662" (18864" MAX. DIA.) PIPE
- ⓘ EXISTING 1662" TO 1668" (18936" MAX. DIA.) PIPE
- ⓙ EXISTING 1668" TO 1674" (19008" MAX. DIA.) PIPE
- ⓑ EXISTING 1674" TO 1680" (19080" MAX. DIA.) PIPE
- ⓓ EXISTING 1680" TO 1686" (19152" MAX. DIA.) PIPE
- ⓔ EXISTING 1686" TO 1692" (19224" MAX. DIA.) PIPE
- ⓕ EXISTING 1692" TO 1698" (19296" MAX. DIA.) PIPE
- ⓖ EXISTING 1698" TO 1704" (19368" MAX. DIA.) PIPE
- ⓗ EXISTING 1704" TO 1710" (19440" MAX. DIA.) PIPE
- ⓘ EXISTING 1710" TO 1716" (19512" MAX. DIA.) PIPE
- ⓙ EXISTING 1716" TO 1722" (19584" MAX. DIA.) PIPE
- ⓑ EXISTING 1722" TO 1728" (19656" MAX. DIA.) PIPE
- ⓓ EXISTING 1728" TO 1734" (19728" MAX. DIA.) PIPE
- ⓔ EXISTING 1734" TO 1740" (19800" MAX. DIA.) PIPE
- ⓕ EXISTING 1740" TO 1746" (19872" MAX. DIA.) PIPE
- ⓖ EXISTING 1746" TO 1752" (19944" MAX. DIA.) PIPE
- ⓗ EXISTING 1752" TO 1758" (20016" MAX. DIA.) PIPE
- ⓘ EXISTING 1758" TO 1764" (20088" MAX. DIA.) PIPE
- ⓙ EXISTING 1764" TO 1770" (20160" MAX. DIA.) PIPE
- ⓑ EXISTING 1770" TO 1776" (20232" MAX. DIA.) PIPE
- ⓓ EXISTING 1776" TO 1782" (20304" MAX. DIA.) PIPE
- ⓔ EXISTING 1782" TO 1788" (20376" MAX. DIA.) PIPE
- ⓕ EXISTING 1788" TO 1794" (20448" MAX. DIA.) PIPE
- ⓖ EXISTING 1794" TO 1800" (20520" MAX. DIA.) PIPE
- ⓗ EXISTING 1800" TO 1806" (20592" MAX. DIA.) PIPE
- ⓘ EXISTING 1806" TO 1812" (20664" MAX. DIA.) PIPE
- ⓙ EXISTING 1812" TO 1818" (20736" MAX. DIA.) PIPE
- ⓑ EXISTING 1818" TO 1824" (20808" MAX. DIA.) PIPE
- ⓓ EXISTING 1824" TO 1830" (20880" MAX. DIA.) PIPE
- ⓔ EXISTING 1830" TO 1836" (20952" MAX. DIA.) PIPE
- ⓕ EXISTING 1836" TO 1842" (21024" MAX. DIA.) PIPE
- ⓖ EXISTING 1842" TO 1848" (21096" MAX. DIA.) PIPE
- ⓗ EXISTING 1848" TO 1854" (21168" MAX. DIA.) PIPE
- ⓘ EXISTING 1854" TO 1860" (21240" MAX. DIA.) PIPE
- ⓙ EXISTING 1860" TO 1866" (21312" MAX. DIA.) PIPE
- ⓑ EXISTING 1866" TO 1872" (21384" MAX. DIA.) PIPE
- ⓓ EXISTING 1872"