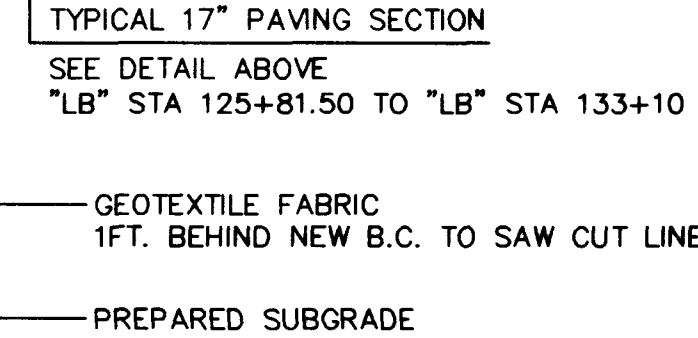
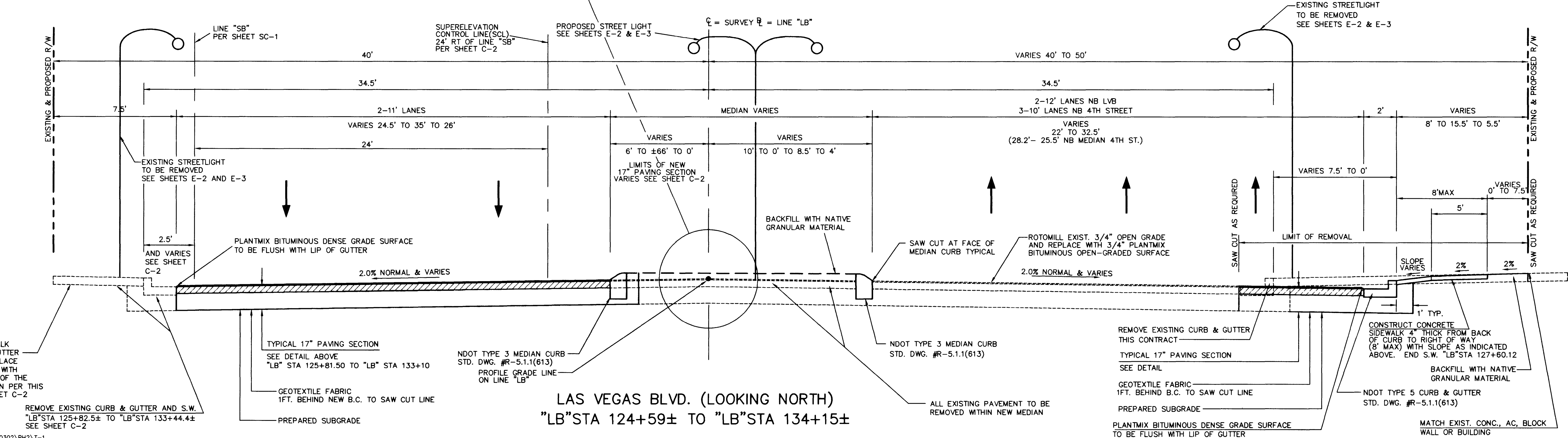


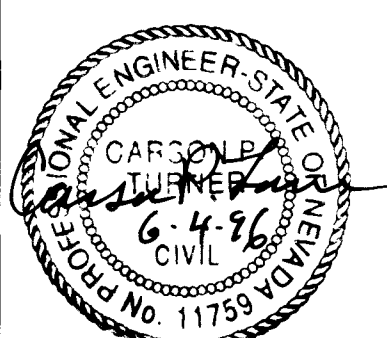
**LAS VEGAS BLVD. (LOOKING NORTH)
"LB" STA 119+47 TO "LB" STA 124+59±**

**LAS VEGAS BLVD. (LOOKING NORTH)
"LB" STA 124+59± TO "LB" STA 134+15±**



REMOVE EXISTING CURB & GUTTER AND S.W. "LB" STA 125+82.5± TO "LB" STA 133+44.4± SEE SHEET C-2

Time: 14:30:00.0
4/17/1996
Drawing File: K:\990302\PH2\T-1



Kimley-Horn and Associates, Inc.
Las Vegas, Nevada

DESIGNED BY CPT
DRAWN BY RKS
CHECKED BY CPT
NOTE BOOK NO.



DOWNTOWN CORRIDOR IMPROVEMENTS
CITY OF LAS VEGAS DEPT. OF PUBLIC WORKS
LAS VEGAS, NEVADA

DATE 6/96
SCALE NA

**TYPICAL SECTIONS
LAS VEGAS BLVD.**

DWG. NO. 107-V-2288B
FILE NO. 9903.02
SHEET 4 OF 46
T-1

NO.	REVISIONS	DATE	BY

264

