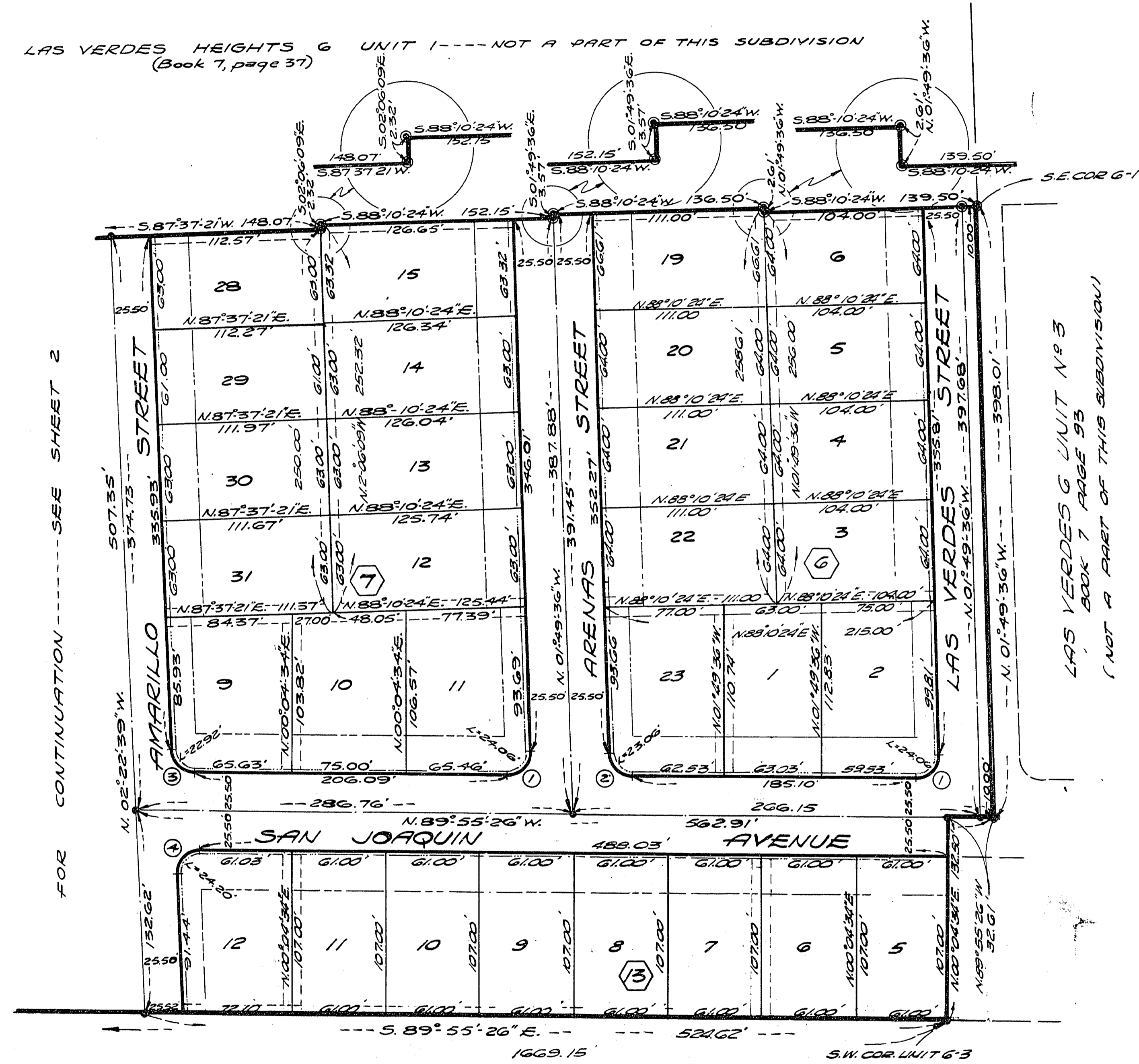


LAS VERDES HEIGHTS 6-UNIT NO. 2

BEING A PORTION OF THE N.E. 1/4 OF SECTION 7, T.21S., R.61E., M.D.B.&M., CITY OF LAS VEGAS, COUNTY OF CLARK, STATE OF NEVADA

LAS VERDES HEIGHTS 6 UNIT 1---NOT A PART OF THIS SUBDIVISION
(Book 7, page 37)



FOR CONTINUATION---SEE SHEET 2

UNDEVELOPED---NOT A PART OF THIS SUBDIVISION

No.	Rad.	Δ	T.	L.
1	15.00'	91° 54' 10"	15.51'	24.06'
2	15.00'	88° 05' 50"	14.51'	23.06'
3	15.00'	87° 32' 47"	14.37'	22.92'
4	15.00'	92° 27' 13"	15.66'	24.20'

- LEGEND**
- Street Centerline
 - Front Set Back Line - 25.00'
 - Side Set Back Line - 15.00'
 - 3' Utility Easement
 - 6' Utility Easement
 - 12' Utility Easement
 - Conc. Monument Set
 - Conc. Monument Found
 - Curve Number
 - Lot Number
 - Block Number

OWNER'S DEDICATION

L. S. Whaley and Sons, Inc., do hereby certify that they are the owners of the parcel of land shown on the Final Map of Las Verdes Heights 6-Unit No. 2, and more particularly described in the Engineer's Certificate hereon, and have consented to and does hereby consent to the preparation and recording of this plat; and does hereby offer and dedicate all of the streets and easements as indicated and outlined hereon for the use of the public; further, L. S. Whaley and Sons, Inc., owner of the within platted lands, does hereby grant and convey to Nevada Power Company, its successors and assigns; the Central Telephone Company, its successors and assigns, a permanent easement and right of way as indicated by the areas marked "Utility Easement" on the within plat for the construction and maintenance of electrical and telephone poles, lines and appurtenances, together with the right of access thereto. No part of the parcels marked "Not a part of this subdivision" is offered for dedication.

Dated Aug. 8, 1962.

L. S. Whaley and Sons, Inc.
Robert Banks
Vice President

ACKNOWLEDGEMENT

State of Nevada } ss.
County of Clark }
On this 21st day of November, 1962, personally appeared before me, Klaudia G. Scales, a Notary Public in and for said County and State, Robert Banks, known to me to be the Vice President of the Corporation that executed the Owner's Dedication and upon oath did depose that he is the officer of said corporation as designated; that he is acquainted with the seal of said corporation, and that the seal affixed to said dedication is the corporate seal of said corporation; and that the said corporation executed said dedication freely and voluntarily and for the uses and purposes herein mentioned.

Klaudia G. Scales
Notary Public in and for said County and State
My Commission expires March 30, 1963

ENGINEER'S CERTIFICATE

I, L. Burl Smith, a duly Registered Land Surveyor, do hereby certify, as Agent for Western Engineers Inc. that this a true and accurate plat of the land surveyed by me or under my direct supervision at the instance of L. S. Whaley and Sons, Inc., owners of said land and laid out into lots, blocks, streets and easements as shown; that the location of said lots, blocks, streets and easements has been definitely established in strict accordance with the law and as shown hereon; that said lots, blocks, streets and easements are situated wholly within the N.E. 1/4 of Section 7, T. 21S., R. 61E., M.D.B. & M., City of Las Vegas, County of Clark, State of Nevada, and more particularly described as follows, to wit: Commencing at the North 1/4 corner of the said Section 7, thence S. 02° 22' 39" E. along the West line of the said N.E. 1/4, a distance of 708.95 feet to the S.W. corner of Las Verdes Heights 6 Unit No. 1, as recorded in Book 7, page 37, of Plats in the Office of the Recorder, Clark County, Nevada, the True Point of Beginning; thence continuing S. 02° 22' 39" E. a distance of 539.09 feet to a point; thence S. 89° 55' 26" E. a distance of 1669.15 feet to a point; thence N. 00° 04' 34" E. a distance of 32.50 feet to a point; thence S. 89° 55' 26" E. a distance of 32.61 feet to a point; thence N. 01° 49' 36" W. a distance of 398.01 feet to the S.E. corner of the said Las Verdes Heights 6 Unit No. 1, thence along the South boundary of the said Las Verdes Heights 6 Unit No. 1, as follows: S. 88° 10' 24" W. a distance of 139.50 feet to a point; thence N. 01° 49' 36" W. a distance of 261 feet to a point; thence S. 88° 10' 24" W. a distance of 136.50 feet to a point; thence S. 01° 49' 36" E. a distance of 3.57 feet to a point; thence S. 88° 10' 24" W. a distance of 152.15 feet to a point; thence S. 02° 22' 39" E. a distance of 2.32 feet to a point; thence S. 87° 37' 21" W. a distance of 148.07 feet to a point; thence N. 02° 22' 39" W. a distance of 26.13 feet to a point; thence S. 87° 37' 21" W. a distance of 119.50 feet to a point; thence N. 02° 22' 39" W. a distance of 4.15 feet to a point; thence N. 89° 31' 42" W. a distance of 1015.25 feet to the True Point of Beginning, containing 20.765 acres, more or less. This survey was completed on the 21st day of JULY, 1962, and is true and complete as shown.

L. Burl Smith, R.L.S. No. 1412

CITY ENGINEER'S CERTIFICATE

I, R.P. Sauer, City Engineer, City of Las Vegas, Clark County, State of Nevada, do hereby certify that I have examined the Final Map of Las Verdes Heights 6-Unit No. 2; that the subdivision shown hereon is substantially the same as it appeared on the Tentative Map and approved alterations thereof; that all provisions of the Planning and Zoning Act of the State of Nevada and any local ordinances applicable at the time of approval of the Tentative Map have been complied with, and that I am satisfied that this map is technically correct.

R.P. SAUER
City Engineer, R.P.E. 396

Dated 21st Nov., 1962.

APPROVALS

In conformity with the Tentative Map, approved this 8th day of November, 1962, by the Planning Commission of the City of Las Vegas, County of Clark, State of Nevada.

Approved and accepted this 21st day of Nov., 1962, by the Board of Commissioners of the City of Las Vegas, County of Clark, State of Nevada.

Ann E. Haden Mayor
Attest: Sigurd Dolson Asst. City Clerk

BASIS OF BEARINGS

The North line of Section 7, T. 21S., R. 61E., M.D.B. & M. (S. 89° 31' 42" E.), as recorded in File 10, page 3, of the Engineer's Files, Office of the County Recorder, Clark County, Nevada.

NO 336659
RECORDED AT THE REQUEST OF
L. S. WHALEY & SONS, INC.
Date 12:30:43 at 2:04 P.M.
BOOK 8 PAGE 44
OFFICIAL RECORDS BOOK NO. 417
CLARK COUNTY, NEVADA, RECORDS
PAUL E. HORN, RECORDER
Fee \$ 24.75 J.S.M.:DEWIM