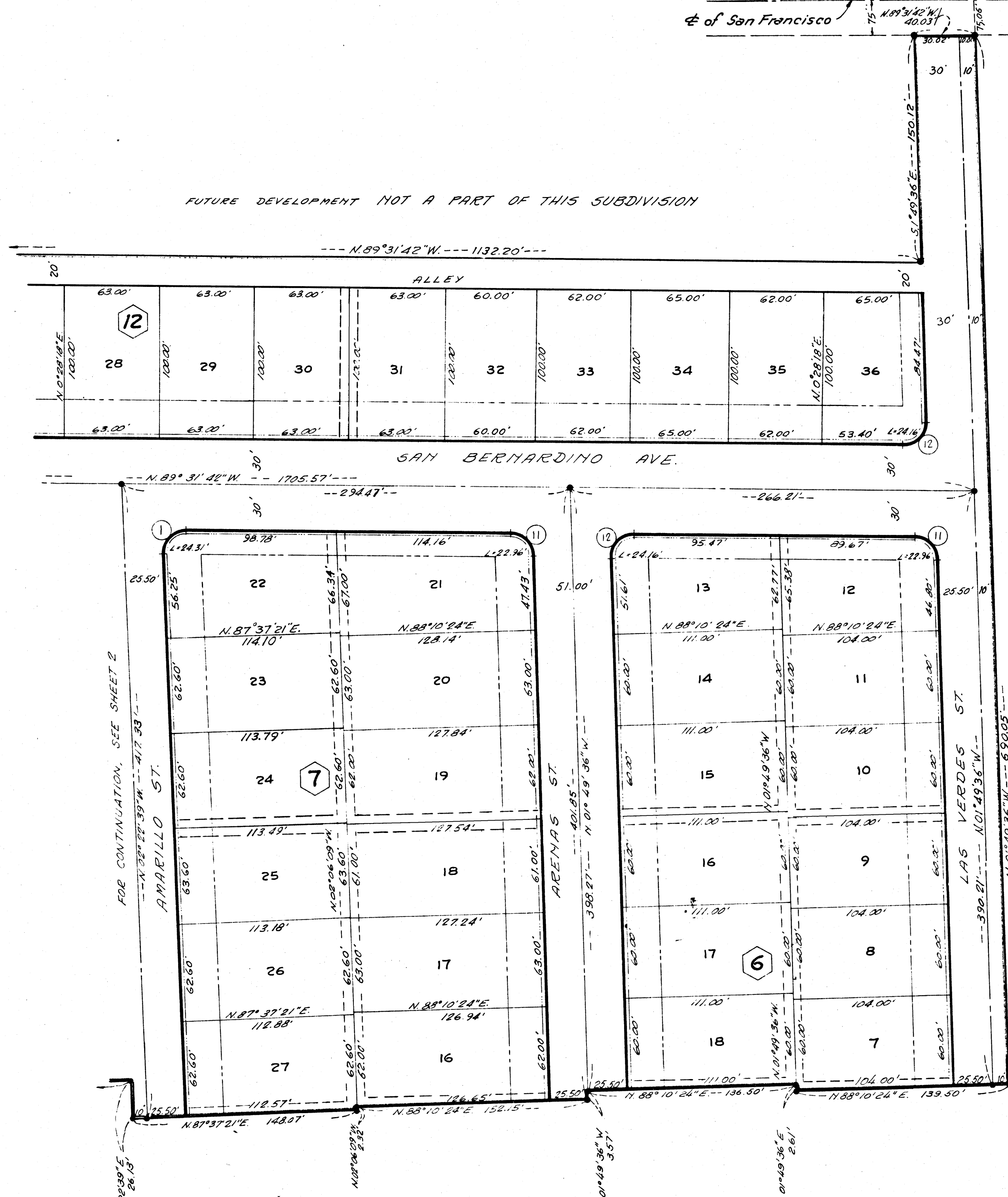


LAS VERDES HEIGHTS 6-UNIT N° 1

BEING A PORTION OF THE N.E. 1/4, SEC. 7, T. 21 S., R. 61 E., M.D.B. & M., CITY OF LAS VEGAS, CLARK COUNTY, STATE OF NEVADA



FUTURE DEVELOPMENT NOT A PART OF THIS SUBDIVISION

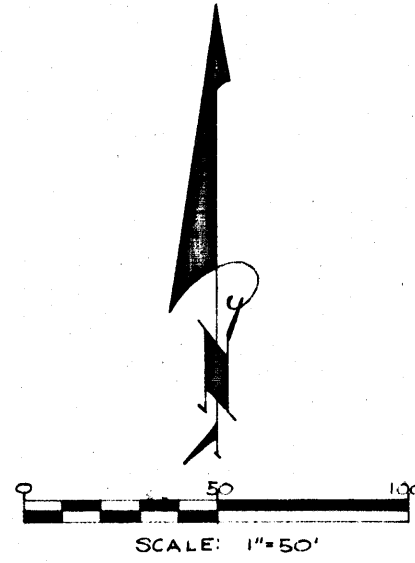
FOR CONTINUATION, SEE SHEET 2

FUTURE DEVELOPMENT NOT A PART OF THIS SUBDIVISION

No	R	Δ	T	L
1	15.00'	92°50'57"	15.77'	24.31'
11	15.00'	87°42'26"	14.41'	22.96'
12	15.00'	92°17'54"	15.61'	24.16'

- LEGEND**
- Front Set Back Line 25'
 - Side Set Back Line 15'
 - 3' Utility Easement
 - 6' Utility Easement
 - 12' Utility Easement
 - Conc. Monument Found
 - Conc. Monument Set
 - 19 Lot Number
 - ③ Block Number
 - ① Curve Number

BASIS OF BEARINGS
The North line of Section 7, T. 21 S., R. 61 E., M.D.B. & M. (S. 89° 31' 42" E.), as recorded in File 4, Page 73 of the Registered Professional Engineer's Files, Office of the County Recorder, Clark County, Nevada.



DEDICATIONS

L.S. Whaley and Sons Inc., Miranti Investment Co. and First Securities Co. of Nevada do hereby certify that they are the owners of the parcel of land shown on the final map of Las Verdes Heights 6 Unit N° 1, and more particularly described in the Engineer's Certificate hereon, and have consented and do hereby consent to the preparation and recording of this plat and do hereby offer and dedicate all of the Streets, Alleys and easements as indicated and outlined hereon, for the use of the public. No part of the parcels marked "Not a Part of this Subdivision" is offered for dedication.

Dated this 20th day of MARCH 1962
 First Securities Co. of Nevada Miranti Investment Co. L.S. Whaley and Sons Inc.
Alfred Reinertson *Miranti* *Robert Banks*
 Vice-President President VICE-President

L.S. Whaley and Sons Inc., Miranti Investment Co. and First Securities Co. of Nevada owners of the within platted lands, does hereby grant and convey to Nevada Power Company, its successors and assigns, a permanent easement and right of way, as shown by the areas marked "Utility Easement" on the within plat, for the construction and maintenance of electrical and telephone poles, lines, and appurtenances, together with the right of access thereto.

Dated this 20th day of MARCH 1962
 First Securities Co. of Nevada Miranti Investment Co. L.S. Whaley and Sons Inc.
Alfred Reinertson *Miranti* *Robert Banks*
 Vice-President President VICE-President

I, Colleen Nelson a Notary Public in and for said County and State, Alfred Reinertson known to me to be Vice President of First Securities of Nevada and Louis Miranti known to me to be President of Miranti Investment Co. and Robert Banks known to me to be Vice-President of L.S. Whaley and Sons Inc. that they executed the foregoing instruments; and upon oath, did depose that they are the officers of said Corporations as indicated following said signatures; and that said Corporations executed the said instruments freely and voluntarily, and for the uses and purposes therein mentioned, that I am acquainted with the seals of said Corporations and that the seals affixed to said instruments are the corporate seals of said Corporations.

Colleen Nelson
 Notary Public in and for said County and State

My Commission Expires:
 Sept. 21, 1963

APPROVALS

In conformity with the tentative map, approved this 21st day of March 1962, by the Planning Commission of the City of Las Vegas, County of Clark, State of Nevada.

Frank J. Bill
 Secretary

Approved and executed this 18th day of April 1962, by the City Board of Commissioners of the City of Las Vegas, County of Clark, State of Nevada.

Ronald Hodgson *Dean R. Hooper*
 City Clerk Mayor

ENGINEER'S CERTIFICATE

I, Ralph L. Kraemer, a duly Registered Professional Engineer and Licensed Land Surveyor do hereby certify, as agent for Western Engineers Inc., that this is a true and accurate plat of the land surveyed by me, or under my direct supervision, at the instance of L.S. Whaley and Sons Inc., Miranti Investment Co. and First Securities Co. of Nevada, owners of said land, and laid out into lots, blocks, streets, alleys and easements as shown; that the location of said lots, blocks, streets, alleys and easements has been definitely established, in strict accordance with the law and as shown hereon, that said lots, blocks, streets, alleys and easements are situated wholly within the N.E. 1/4 of Section 7, T. 21 S., R. 61 E., M.D.B. & M., City of Las Vegas, County of Clark, State of Nevada, and more particularly described as follows, to wit: Commencing at the N. 1/4 corner of said section 7, thence S. 02° 22' 39" E. along the West line of the N.E. 1/4 of said section 7, a distance of 365.45 feet to the true point of beginning, thence continuing along said west line, S. 02° 22' 39" E. a distance of 403.50 feet to a point, thence S. 89° 31' 42" E. a distance of 1015.83 feet to a point, thence S. 02° 22' 39" E. a distance of 4.15 feet to a point, thence N. 87° 37' 21" E. a distance of 118.50 feet to a point, thence S. 02° 22' 39" E. a distance of 26.13 feet to a point, thence N. 87° 37' 21" E. a distance of 148.07 feet to a point, thence N. 02° 22' 39" E. a distance of 2.32 feet to a point, thence N. 88° 10' 24" E. a distance of 152.15 feet to a point, thence N. 01° 49' 36" W. a distance of 3.37 feet to a point, thence N. 89° 10' 24" E. a distance of 136.50 feet to a point, thence S. 01° 49' 36" E. a distance of 2.61 feet to a point, thence N. 88° 10' 24" E. a distance of 139.50 feet to a point, thence N. 01° 49' 36" W. a distance of 690.05 feet to a point on the South right-of-way line of San Francisco Blvd, thence N. 89° 31' 42" W. along the said South right-of-way line of San Francisco Blvd, a distance of 40.03 feet to a point, thence S. 01° 49' 36" W. a distance of 150.12 feet, thence N. 89° 31' 42" W. a distance of 118.22 feet to a point, thence S. 02° 22' 39" E. a distance of 140.00 feet to a point, thence N. 89° 31' 42" W. a distance of 537.82 feet to the true point of beginning, containing 19,887 acres more or less. This survey was completed on the 20th day of March 1962, and is true and complete as shown.

Ralph L. Kraemer
 Ralph L. Kraemer, R.R.E. 1349, L.S. 1096

CITY ENGINEER'S CERTIFICATE

I, R. P. Sever, City Engineer of the City of Las Vegas, County of Clark, State of Nevada, do hereby certify that I have examined the final map of Las Verdes Heights 6-Unit N° 1 that the subdivision shown hereon is substantially the same as it appeared on the tentative map and approved alterations thereof, that all provisions of the planning and zoning act of the State of Nevada, and any local ordinances applicable at the time of approval of the tentative map have been complied with, and that I am satisfied that this map is technically correct.

Dated - April 17, 1962
R. P. Sever
 R. P. Sever, City Engineer, R.P.E. 396

NO. 295981

RECORDED AT THE REQUEST OF

MIRANTI INVESTMENT Co.

Date 6-13-62 at 3:49 P.M.

BOOK 7 PAGE 37

OFFICIAL RECORDS, BOOK NO. 366

CLARK COUNTY, NEVADA, RECORDS

PAUL C. O'MALLEY, RECORDER

Fee \$23.75 J.S. Deputy

