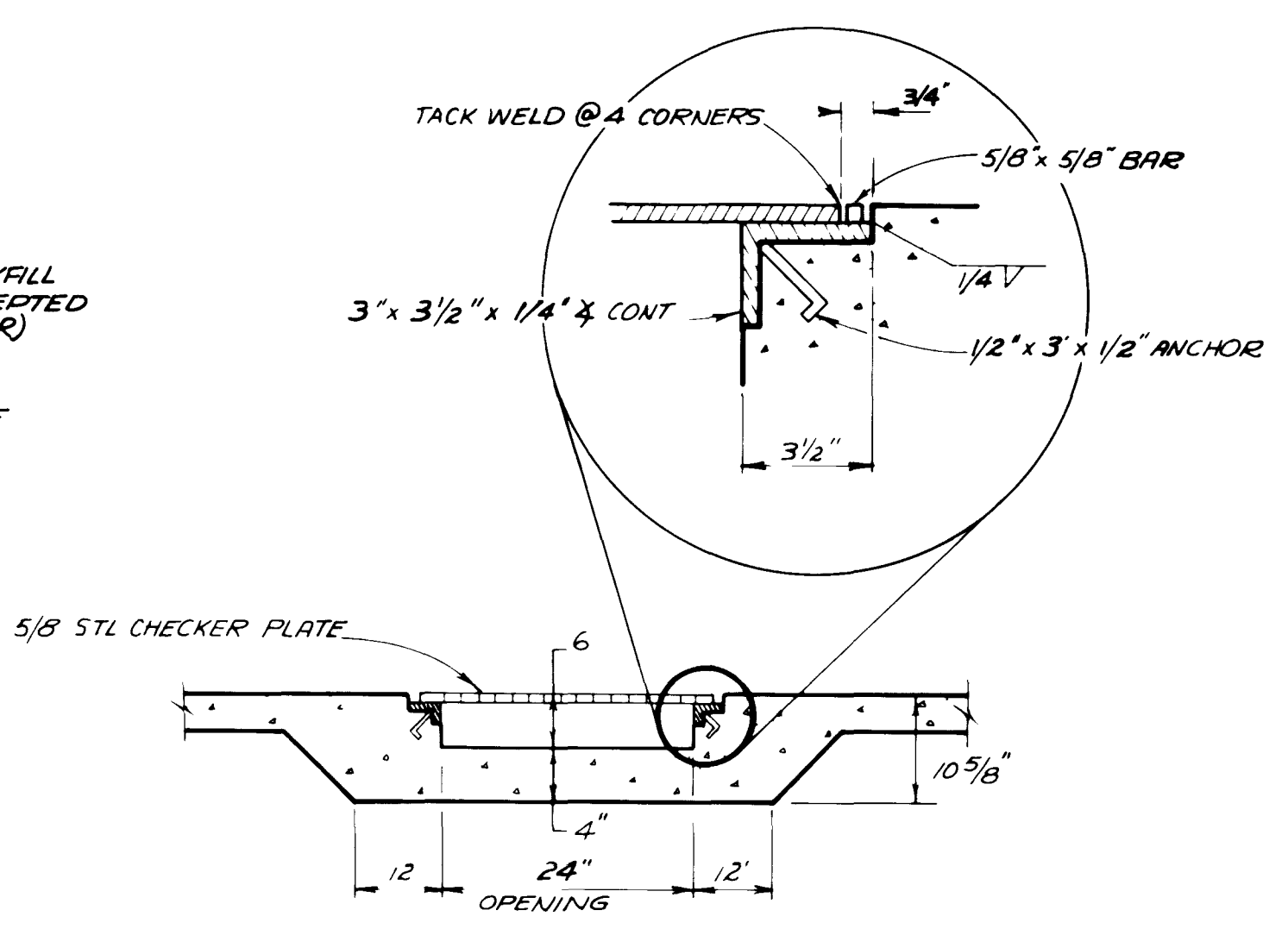
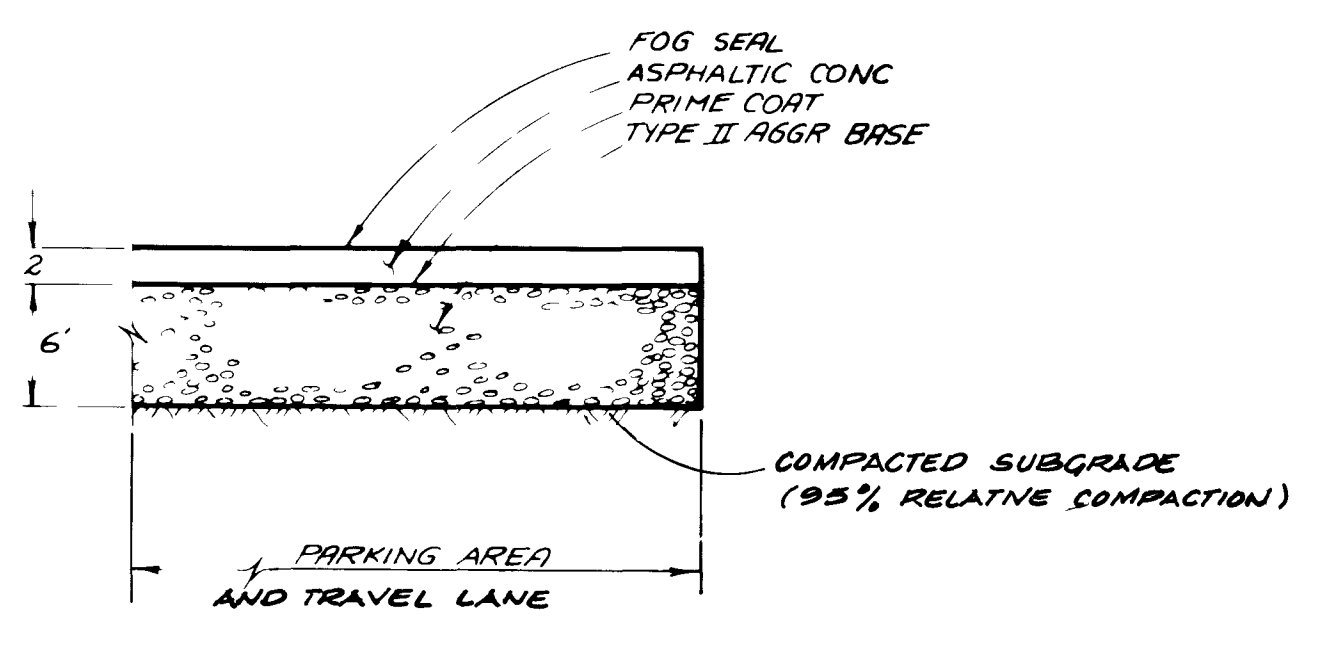


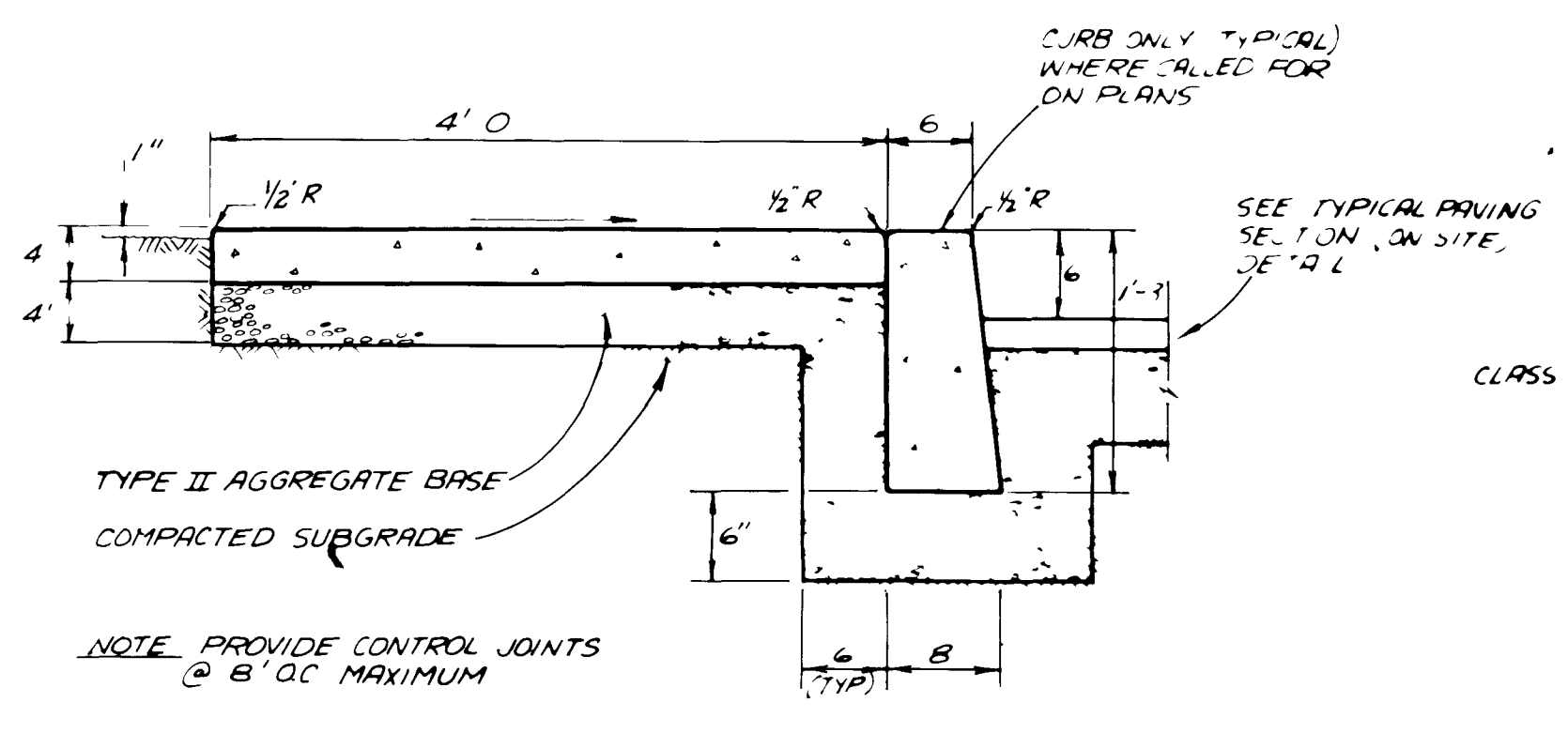
**ON-SITE  
TYPICAL TRENCH  
NO SCALE**



**SIDEWALK UNDERDRAIN  
NO SCALE**

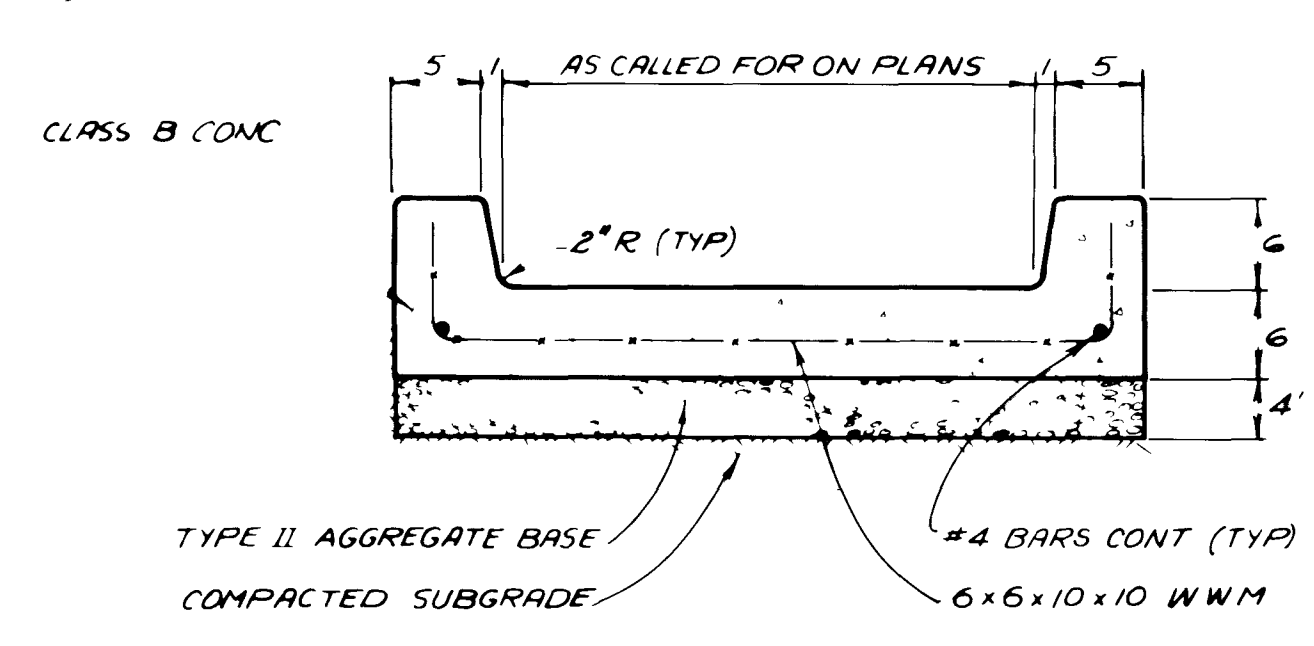


**ON-SITE  
TYPICAL PAVING SECTIONS  
NO SCALE**

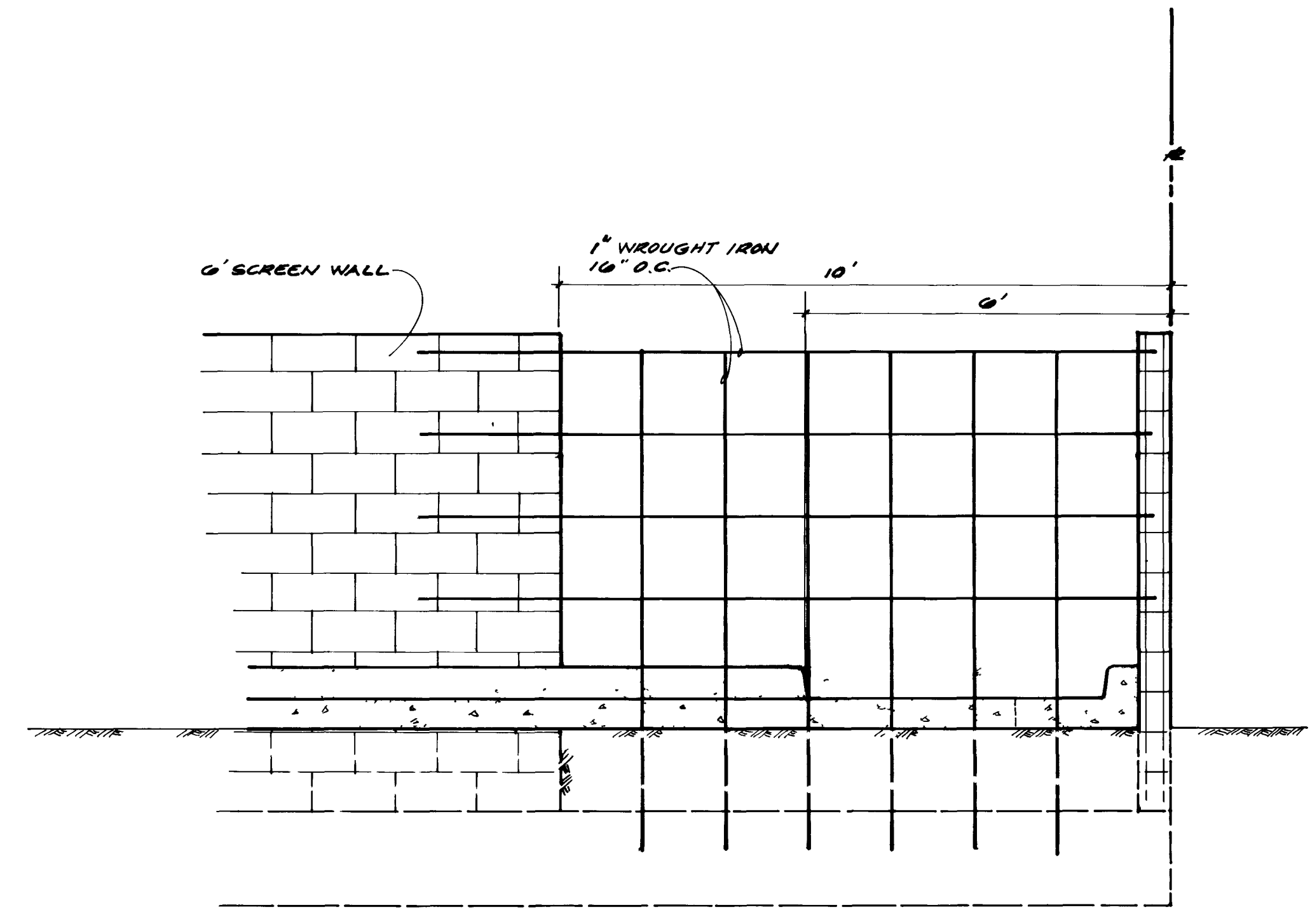


**ON-SITE  
CONCRETE CURB & SIDEWALK  
NO SCALE**

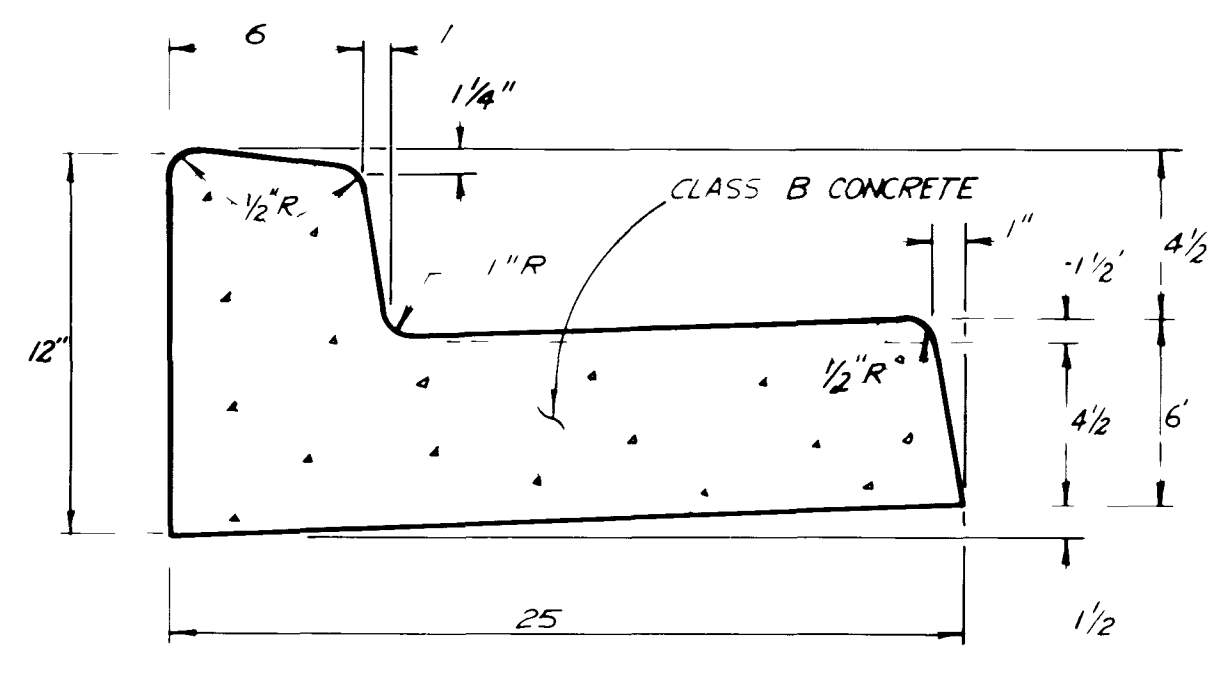
NOTE: PROVIDE 1/2" DEEP x 1/4" TOOLED CONTROL JOINTS AT 5' O.C. IN ADDITION, AT 25' O.C. PROVIDE 1/2" THICK PREMOLODED EXPANSION JOINT REINFORCING IS NOT CONTINUOUS ACROSS EXPANSION JOINTS



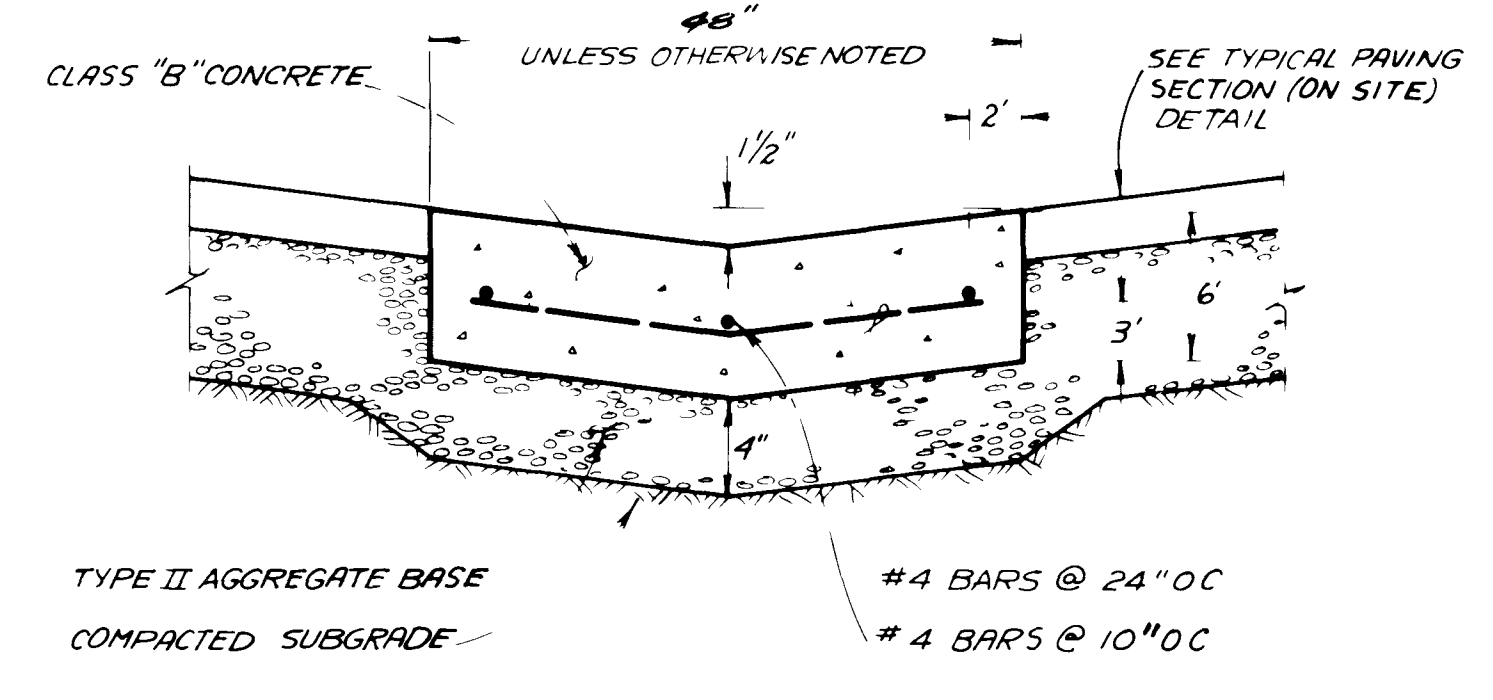
**ON-SITE  
CONCRETE SWALE  
NO SCALE**



**WALL OPENING DETAIL  
( EAST PROPERTY LINE )  
NO SCALE**



**ON-SITE  
"L" TYPE CURB & GUTTER  
NO SCALE**

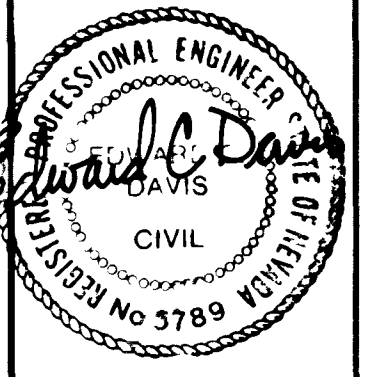


**ON-SITE  
VALLEY GUTTER  
NO SCALE**

*Chris J. ...*  
**CHIEF - LAND DEVELOPMENT & FLOOD CONTROL**

15 Nov 84  
**DATE**

NO	DESCRIPTION/DATE	BY



10-17-84

SPARKS, NEVADA  
 LAS VEGAS, NEVADA  
 SEATTLE, WASHINGTON  
**SEA**  
 ENGINEERS/PLANNERS

NEVADA

**DETAIL SHEET**  
**LAGUNA SHORES SUBDIVISION**  
 A PORTION OF THE NW 1/4 OF THE SW 1/4 OF SECTION 19, T20S, R61E, MDM  
 LAS VEGAS  
 CLARK COUNTY

JOB NO. 2-270-010-84
DESIGNED RM
DRAWN LLS & AC
COMP
CHECKED
DATE AUGUST, 1984

**5**  
 5 OF 5 SHEETS

