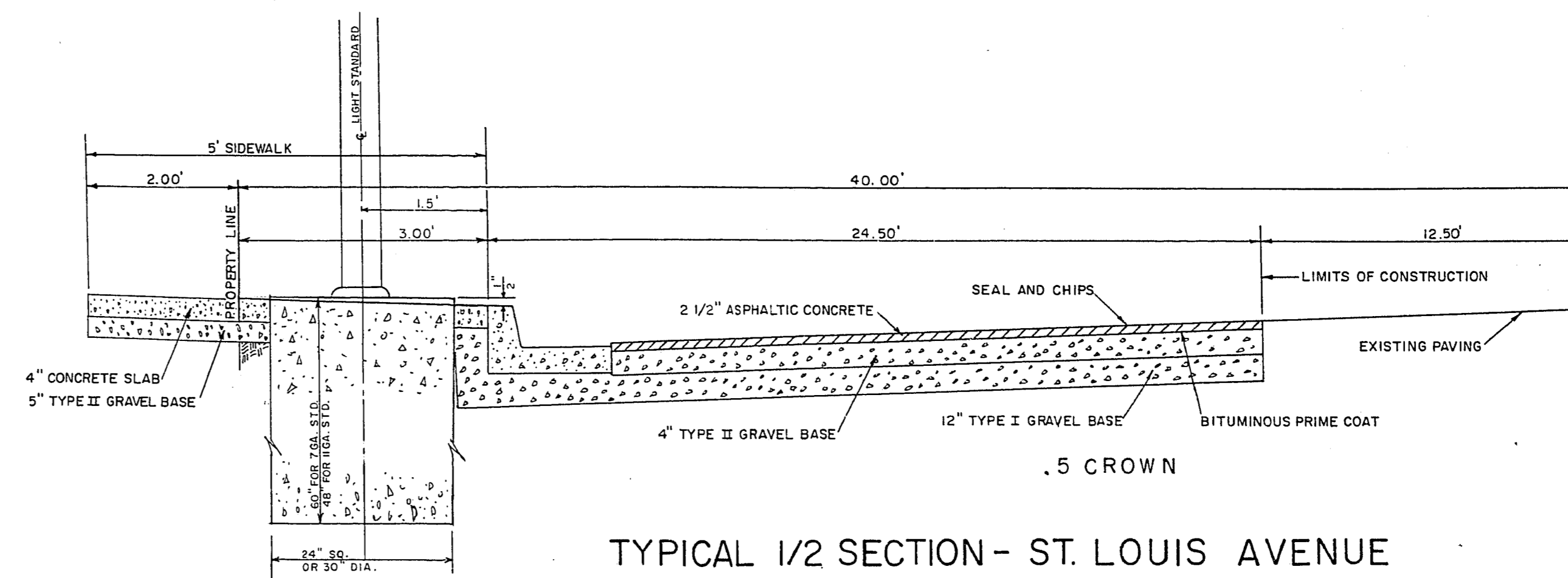
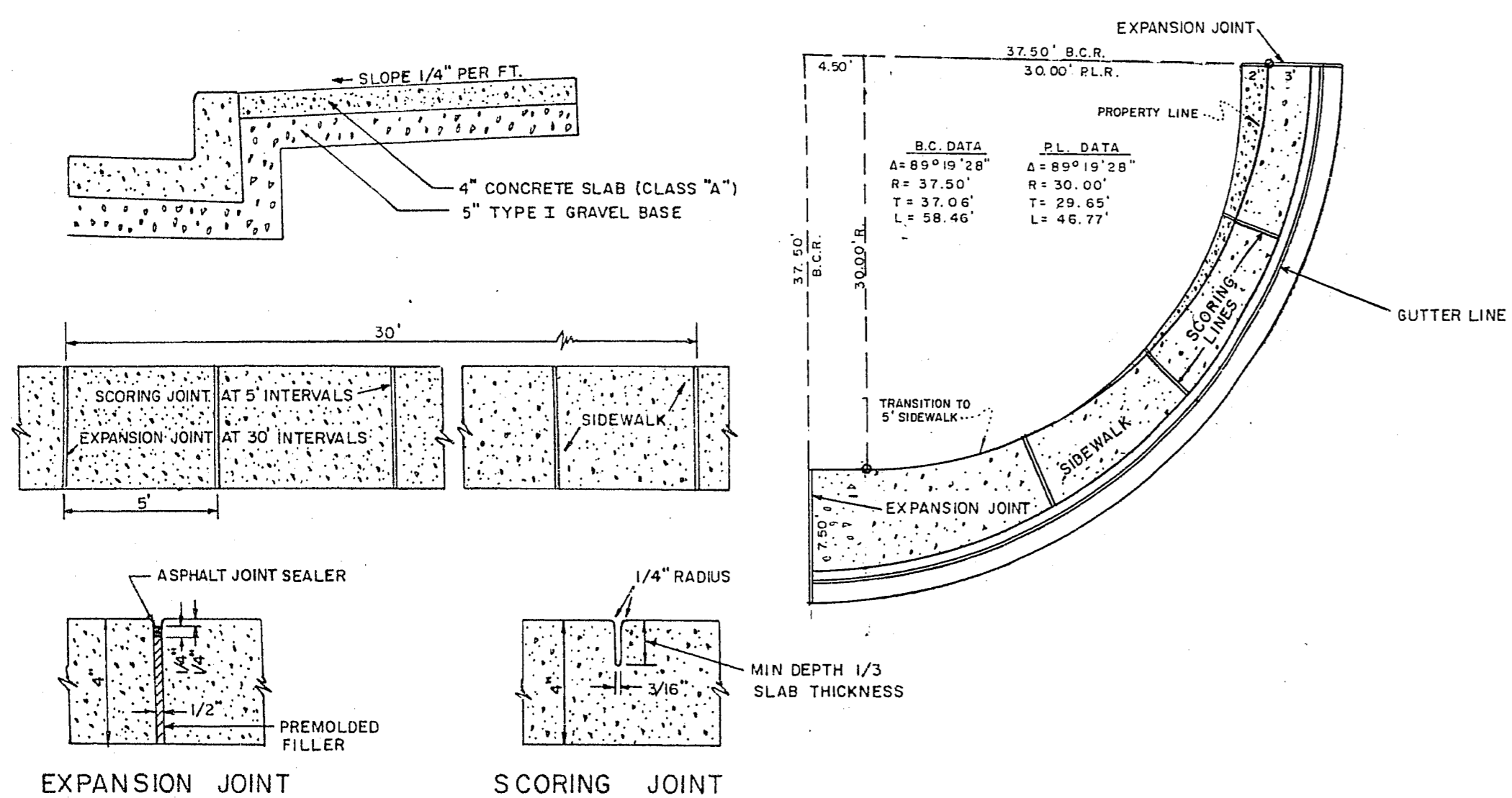


TYPICAL SECTION - LAS VEGAS BOULEVARD SOUTH
(DOES NOT APPLY)

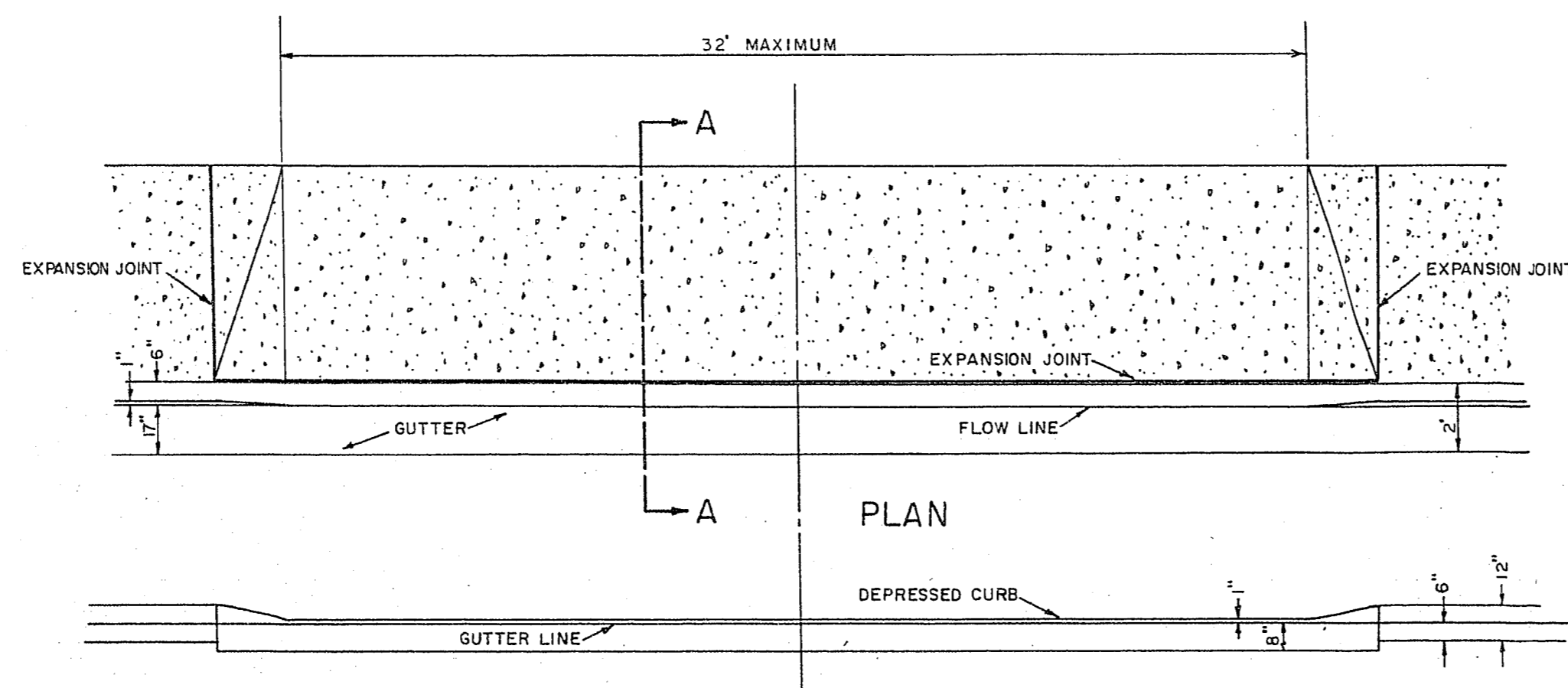


TYPICAL 1/2 SECTION - ST. LOUIS AVENUE

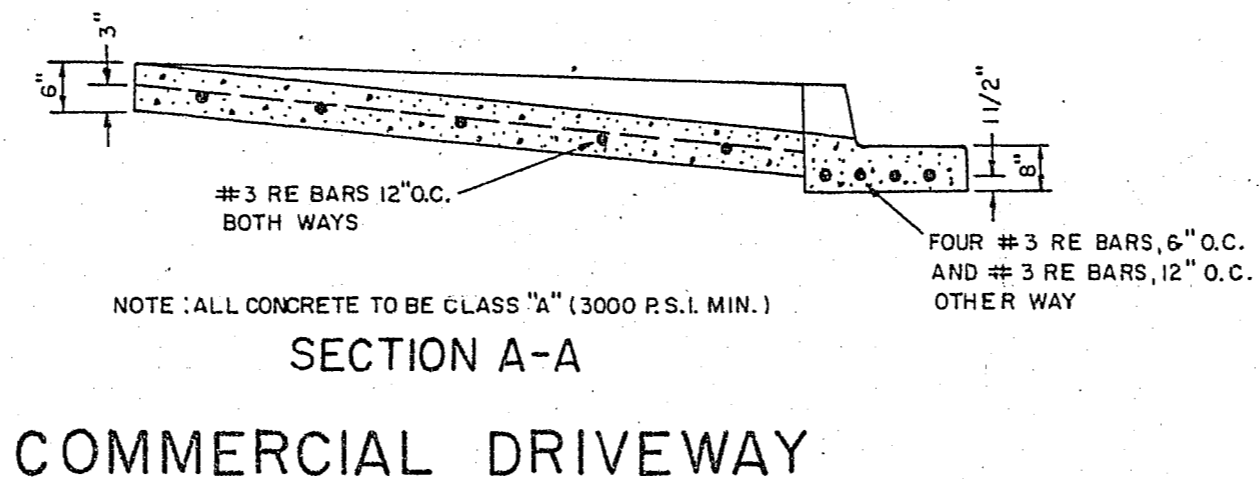
NOTE: STREET LIGHT DOES NOT APPLY



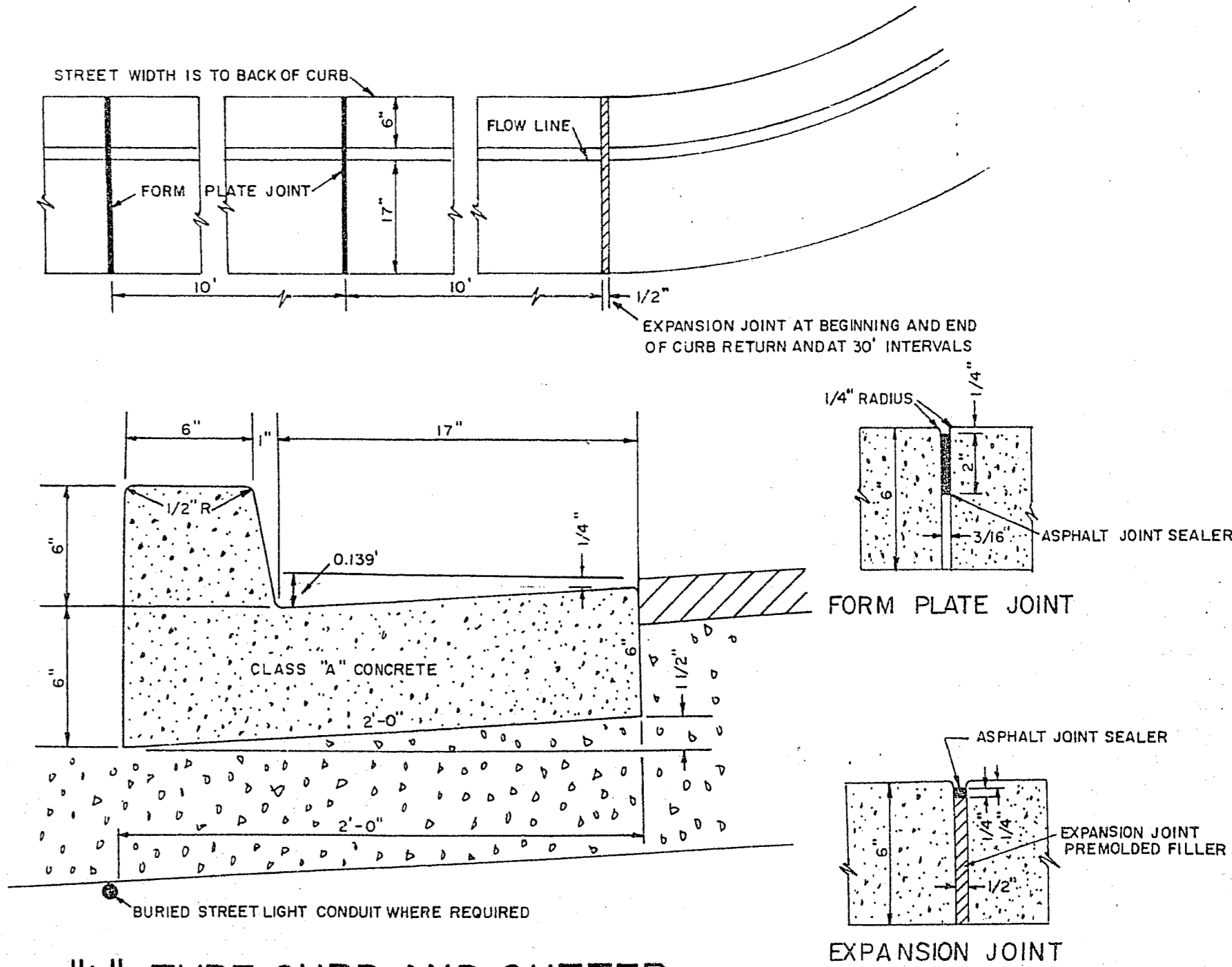
SIDEWALK



ELEVATION



SECTION A-A
COMMERCIAL DRIVEWAY



"L" TYPE CURB AND GUTTER

4	11/4/64
6	10/26/64
1	11/13/64
2	11/4/64
3	11/5/64
5	11/13/64

STANDARD DETAILS		DATE	
CONSULTING ENGINEER	B. J. Vasey	10/27/64	
DRAWN BY	at [signature]	10/1/64	
FIELD ENGINEER			
APPROVED BY CITY ENGINEER	V. B. [signature]	11/13/64	
DESIGNED BY		SCALE: NONE	SHEET 1
DRAWN BY		TYSON ENGINEERING COMPANY	
CHECKED BY		CONSULTING ENGINEERS	
		1209 COMMERCE STREET LAS VEGAS, NEV.	
		OF 2 SHEETS	

107-V602