

**SURVEYOR'S CERTIFICATE**

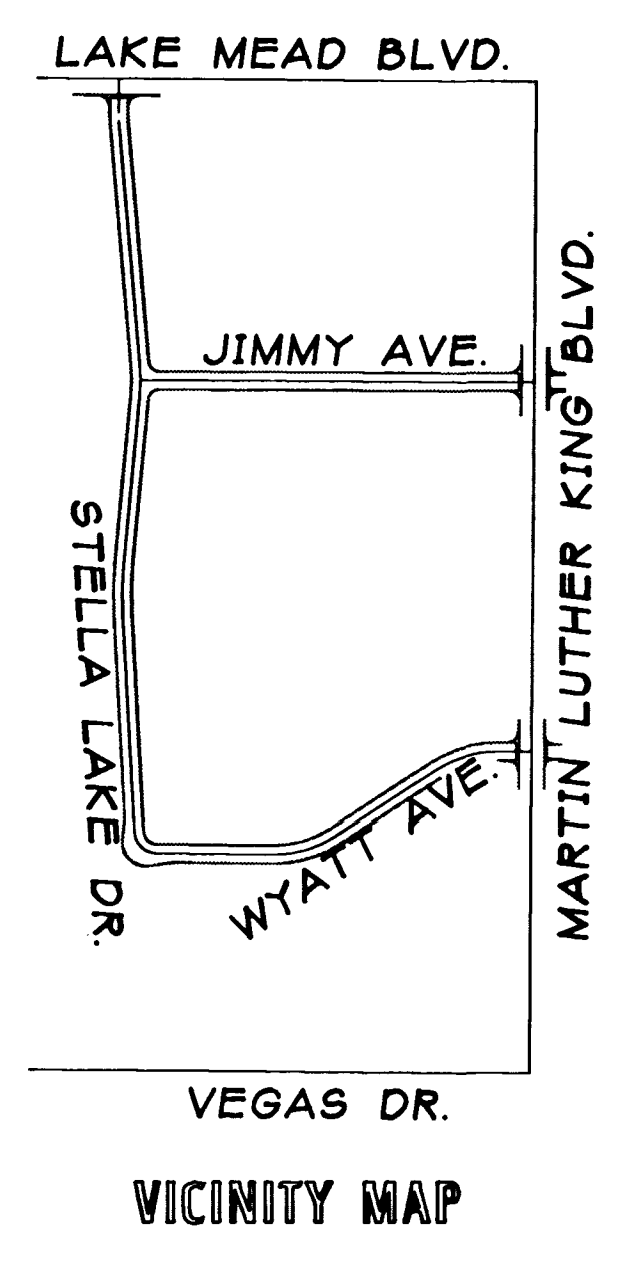
I, GERALD L. WIRTHLIN, A PROFESSIONAL LAND SURVEYOR IN THE STATE OF NEVADA, DO HEREBY CERTIFY THAT THE MONUMENTS HAVE BEEN SET AND THE TIE DISTANCES ESTABLISHED AS SHOWN HEREON. THIS SURVEY WAS COMPLETED ON JANUARY 21, 1997.

GERALD L. WIRTHLIN  
PROFESSIONAL LAND SURVEYOR  
NEVADA CERTIFICATE No. 7008

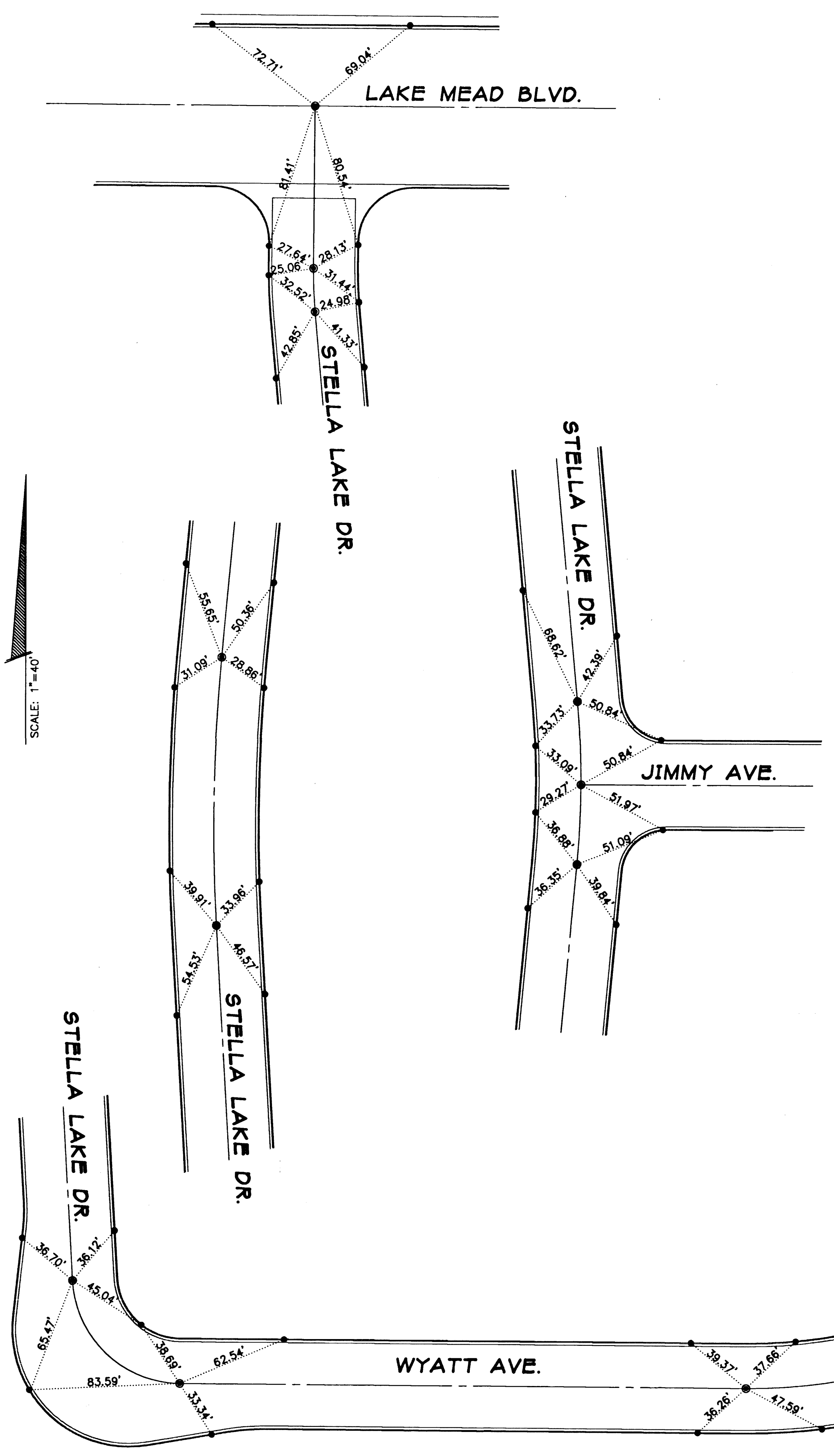


**LEGEND**

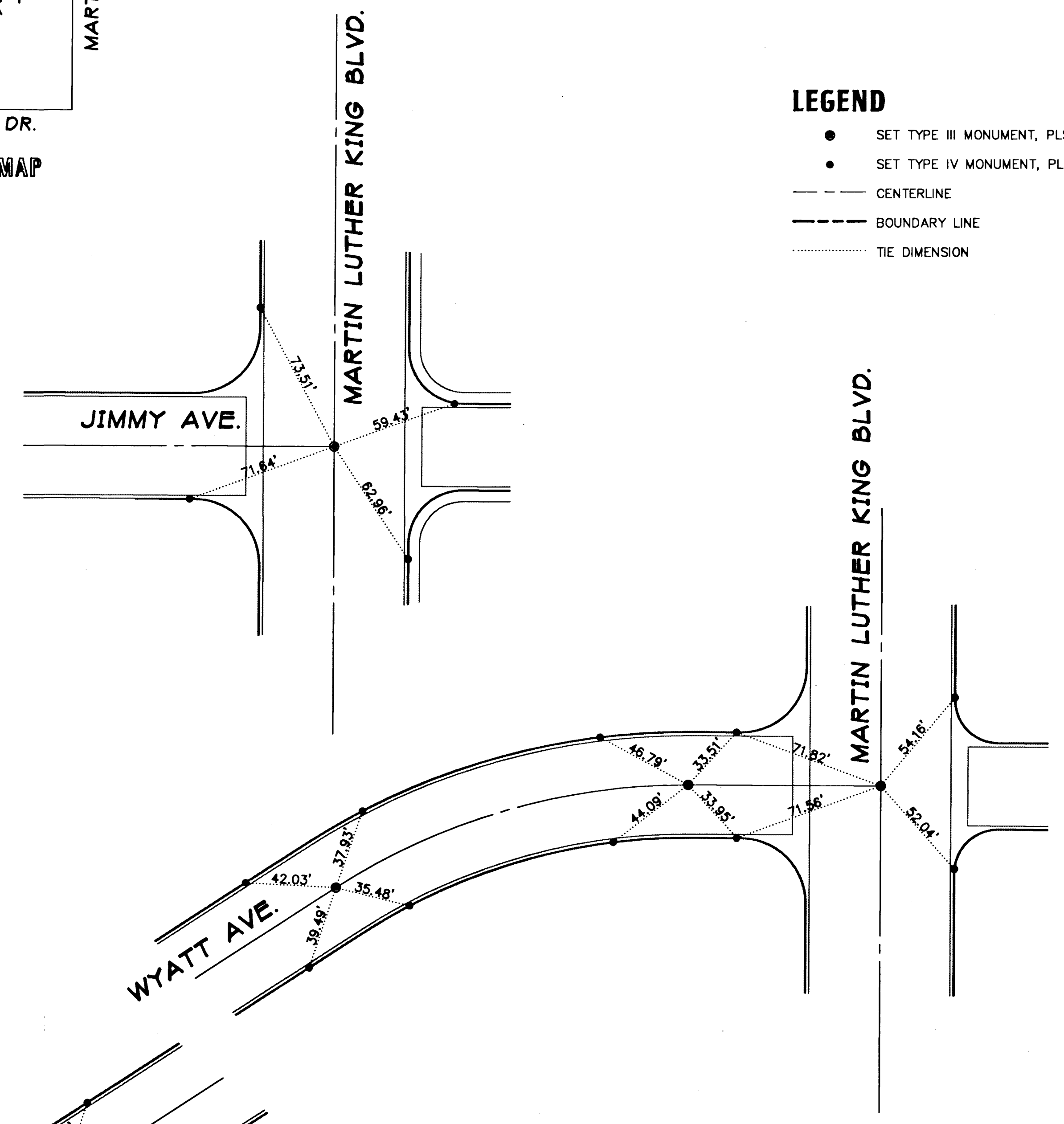
- SET TYPE III MONUMENT, PLS 7008
- SET TYPE IV MONUMENT, PLS 7008
- CENTERLINE
- BOUNDARY LINE
- ..... TIE DIMENSION



VICINITY MAP



SCALE: 1"=40'



<b>MONUMENTATION / TIE MAP</b>	
A PORTION OF THE E 1/2 OF THE SW 1/4 OF SECTION 21, TOWNSHIP 20 SOUTH, RANGE 61 EAST, M.D.M. CLARK COUNTY, NEVADA	
<b>LAS VEGAS ENTERPRISE PARK</b>	
LAS VEGAS PAVING CORP. GERALD "CROCKETT" WIRTHLIN PLS #7008	1 of 1 OFFICE 379-9362 MOBILE 058-4442

### SURVEYOR'S CERTIFICATE

I HEREBY CERTIFY THAT THE FOREGOING IS A TRUE AND CORRECT COPY OF THE ORIGINAL RECORD PLAT, MAP, PLAN, SPECIFICATION, CONTRACT, AGREEMENT, ORDER, DECISION, ORDER OF THE BOARD OF SURVEYORS, COUNTY OF WYOMING, STATE OF WYOMING, AS FILED IN THE OFFICE OF THE CLERK OF SAID COUNTY, WYOMING, ON THIS 15th DAY OF MARCH, 1958.

WYOMING SURVEYORS  
 BOARD OF SURVEYORS  
 COUNTY OFFICE IN 1958

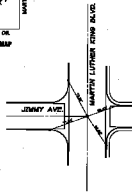
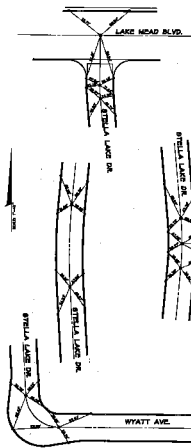


### LEGEND

- SET TYPE B MARKERS, P.L. 700
- SET TYPE B MARKERS, P.L. 700
- CENTERLINE
- BOUNDARY LINE
- IN EXISTENCE



VERBAL OR  
 WYOMING MAP



### COMMENTATION / THE MAP

A PORTION OF THE E 1/2 OF THE SW 1/4 OF THE NW 1/4 OF SECTION 25, TOWNSHIP 20 NORTH, RANGE 10 EAST, S.W. 1/4, 20N 20E 10E

1st CLASS SURVEYOR'S PLAN

BY JOHN JAMES LADD  
 COUNTY SURVEYOR WYOMING  
 1958