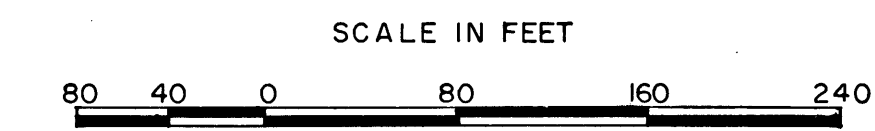
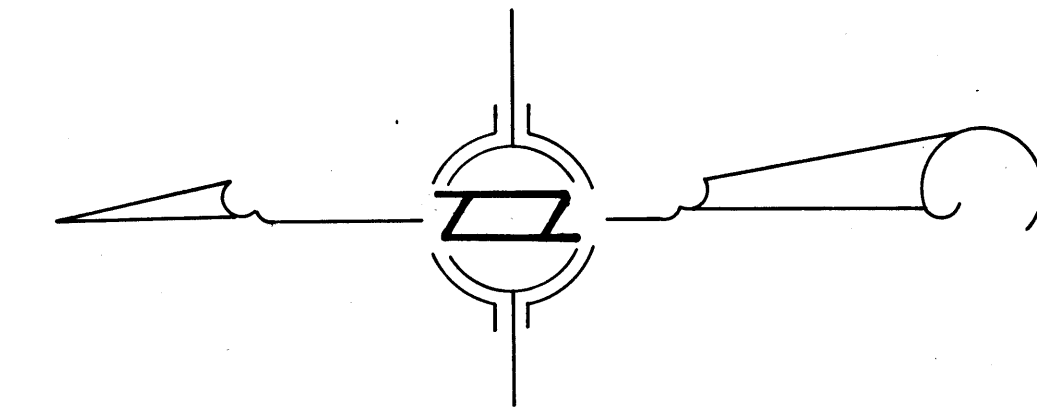
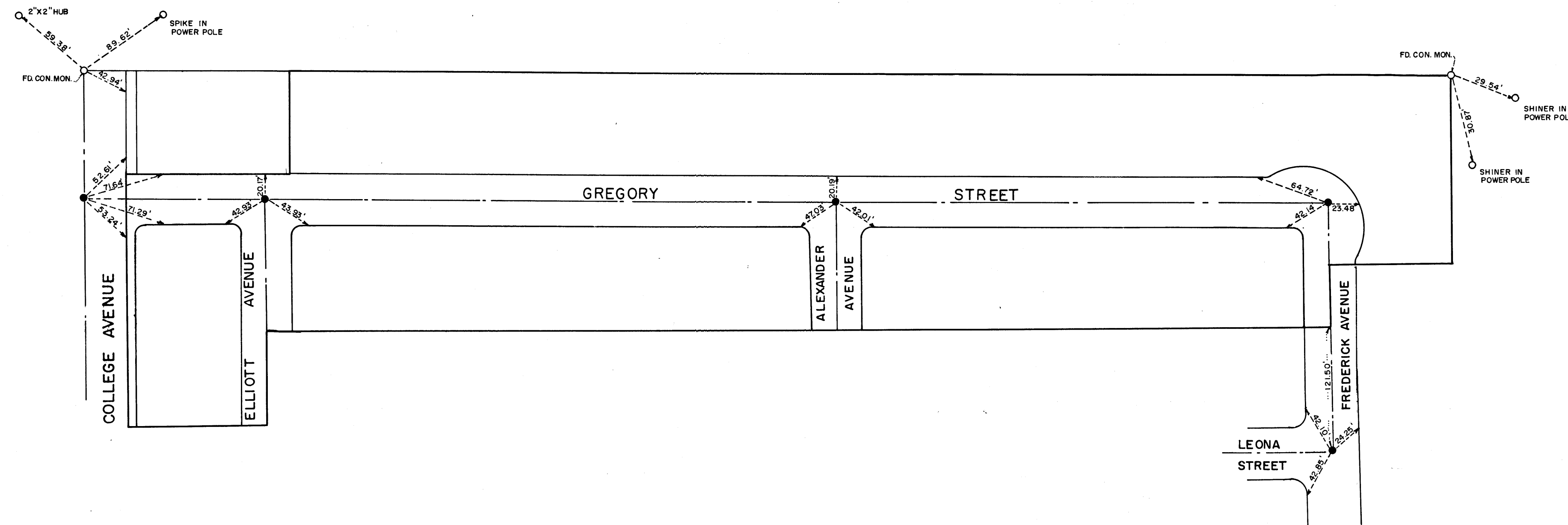


KASPER PARK UNIT N^o 3

BEING A PORTION OF THE N.E.1/4 OF THE S.W.1/4 OF SEC. 22, T20S, R61E, M.D. B.&M.
CITY OF LAS VEGAS, COUNTY OF CLARK, STATE OF NEVADA



•..... SET CONCRETE MONUMENT TAGGED R.E. 560
REFERENCE TIES ARE MARKED BY (X) CUT IN TOP OF CURB.



MONUMENT TIES KASPER PARK UNIT N^o 3			
DATE FEB. 18, 1963			
DESIGNED BY	SCALE:	TYSON ENGINEERING COMPANY	SHEET 1
DRAWN BY M.P.	AS SHOWN		CONSULTING ENGINEERS
CHECKED BY B.J.V.			1209 COMMERCE STREET LAS VEGAS, NEV.