



THE CONSTRUCTION OF THIS PROJECT REQUIRES A NUMBER OF NEAREST NEIGHBORHOODS TO BE RELOCATED IN ORDER TO FULLY COMPLY WITH THE STATE OF NEVADA'S REQUIREMENTS FOR CONSTRUCTION OF THIS PROJECT.

**BENCHMARK**

SET OF LAS VEGAS BENCHMARK NO. 1041-1014, A BENCH MARK IN THE FORM OF A CONCRETE PILE WITH AN IRON ROD AND BRASS NUT AND WASHER AND LEVEL MARK BOLTS. BENCHMARK COORDINATES NOT FURNISHED.

**CONSTRUCTION NOTES - GRADING**

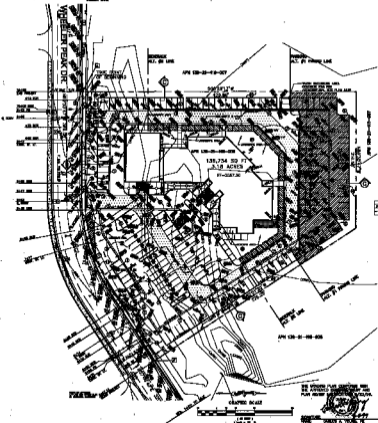
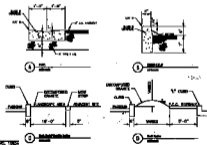
1. CONCRETE FOR PAVEMENT PER STATE & OR CITY CODE.
2. CONCRETE OF PCC GRADE PER STATE & OR CITY CODE.
3. CONCRETE AT THIS POINT AND OTHER PCC UNIFORM GRADE TO BE 2.5%.
4. CONCRETE CONSTRUCTION SHOULD BE IN ACCORDANCE WITH THE UNIFORM SPECIFICATIONS FOR CONCRETE CONSTRUCTION, 1985, 10th EDITION, AND THE SPECIFICATIONS FOR CONCRETE CONSTRUCTION, 1985, 10th EDITION.
5. CONCRETE OF PCC GRADE PER STATE & OR CITY CODE.
6. CONCRETE OF READY MIX CONCRETE OVER AT THIS POINT.
7. CONCRETE OF READY MIX CONCRETE OVER AT THIS POINT.
8. WALL 12" MIN. THICK.
9. BASTION MUST VERIFY DEFLECTION CRITERIA FOR ALL WALLS PER CITY OF LAS VEGAS STANDARD SPECIFICATIONS.
10. LANDSCAPE AND PAVEMENT PLAN.
11. REINFORCE CONCRETE WITH REINFORCING BARS, REINFORCE PER CITY SPECIFICATIONS TO CONFORM TO FRESH CONCRETE PRACTICE.
12. REINFORCE CONCRETE WITH REINFORCING BARS, REINFORCE PER CITY SPECIFICATIONS TO CONFORM TO FRESH CONCRETE PRACTICE.

**CURVE TABLE**

STATION	CHORD BEARING	CHORD DISTANCE	CHORD BEARING
1+00.00	113.25° 00' 00"	100.00	113.25° 00' 00"
2+00.00	113.25° 00' 00"	100.00	113.25° 00' 00"
3+00.00	113.25° 00' 00"	100.00	113.25° 00' 00"

**DRIVEWAY TABLE**

LOCATION NO.	DRIVEWAY	WIDTH	DEPTH	SPACING	SPACING	SPACING	SPACING	SPACING	SPACING
1	DRIVEWAY	10'-0"	10'-0"	10'-0"	10'-0"	10'-0"	10'-0"	10'-0"	10'-0"
2	DRIVEWAY	10'-0"	10'-0"	10'-0"	10'-0"	10'-0"	10'-0"	10'-0"	10'-0"
3	DRIVEWAY	10'-0"	10'-0"	10'-0"	10'-0"	10'-0"	10'-0"	10'-0"	10'-0"
4	DRIVEWAY	10'-0"	10'-0"	10'-0"	10'-0"	10'-0"	10'-0"	10'-0"	10'-0"
5	DRIVEWAY	10'-0"	10'-0"	10'-0"	10'-0"	10'-0"	10'-0"	10'-0"	10'-0"



CLARK COUNTY, NEVADA  
 CLARK COUNTY ENGINEERING DEPARTMENT  
 1500 SOUTH LAS VEGAS AVENUE, SUITE 100  
 LAS VEGAS, NEVADA 89102  
 PHONE: (702) 733-1000  
 FAX: (702) 733-1001  
 WWW: WWW.CCENGINEERING.NV.GOV

GRADING PLAN  
 LAS VEGAS  
 COMMUNITY HEALTH CENTERS