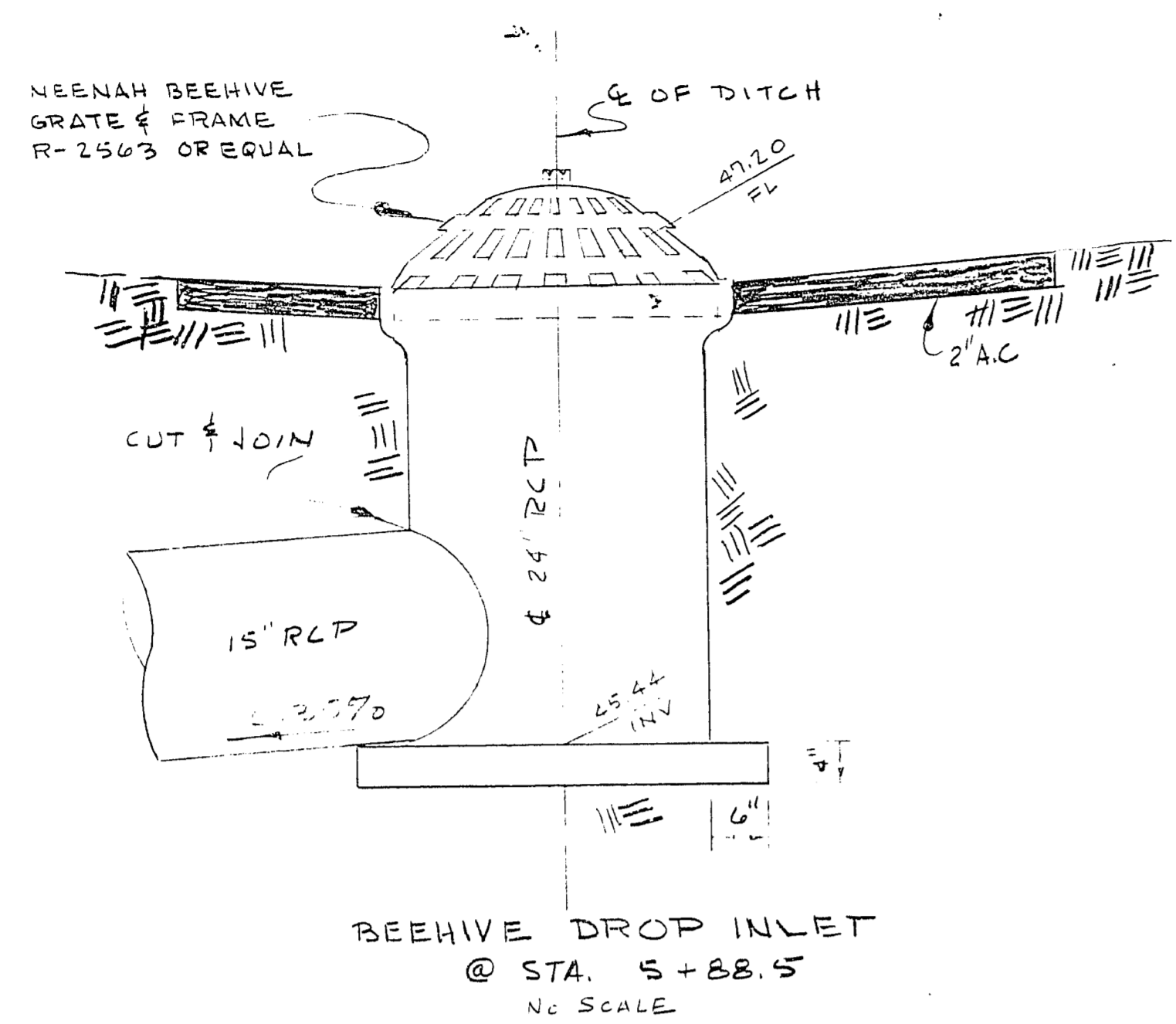
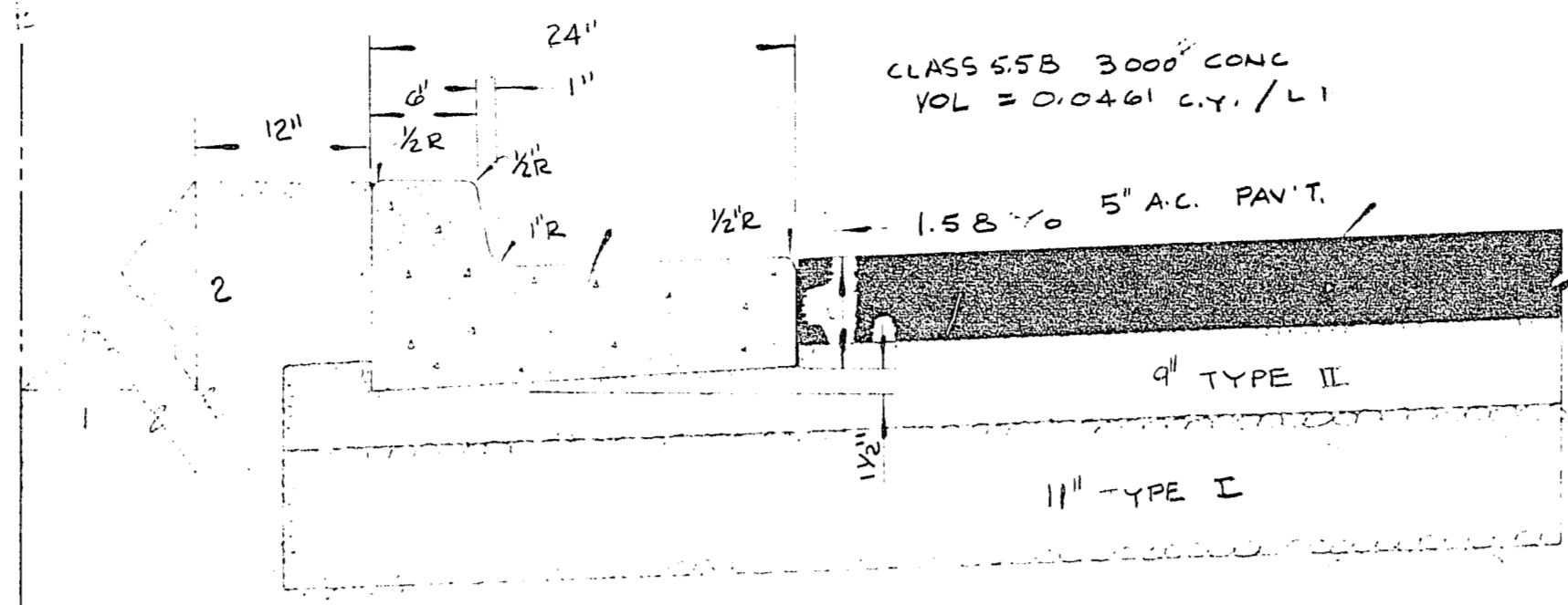


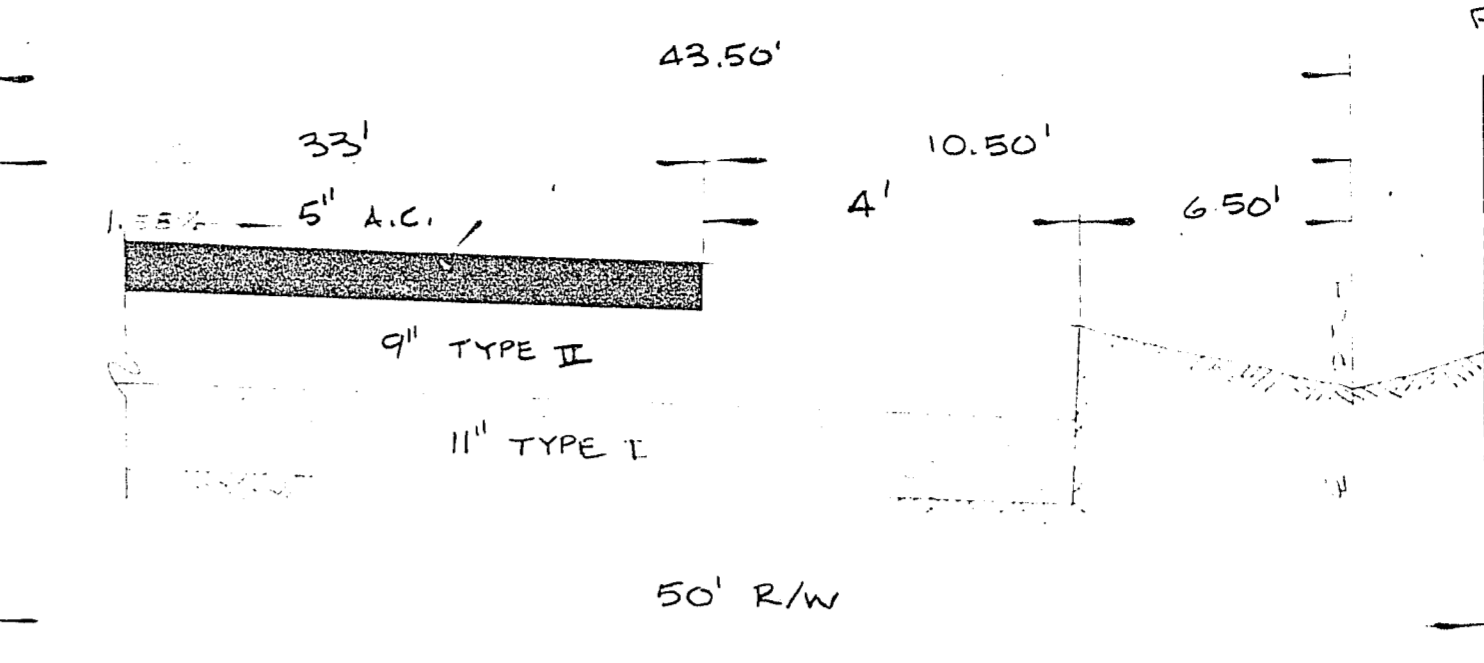
5-8-16



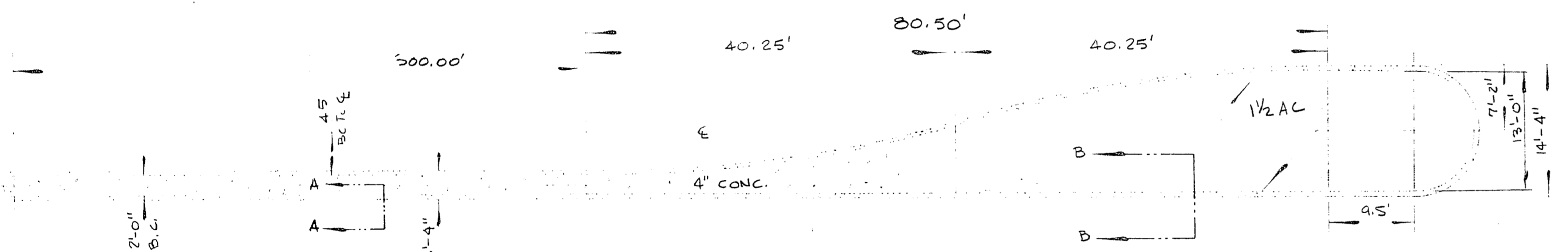
BEEHIVE DROP INLET
@ STA. 5+88.5
NO SCALE



"L" TYPE CURB & GUTTER
SECTION
NO SCALE



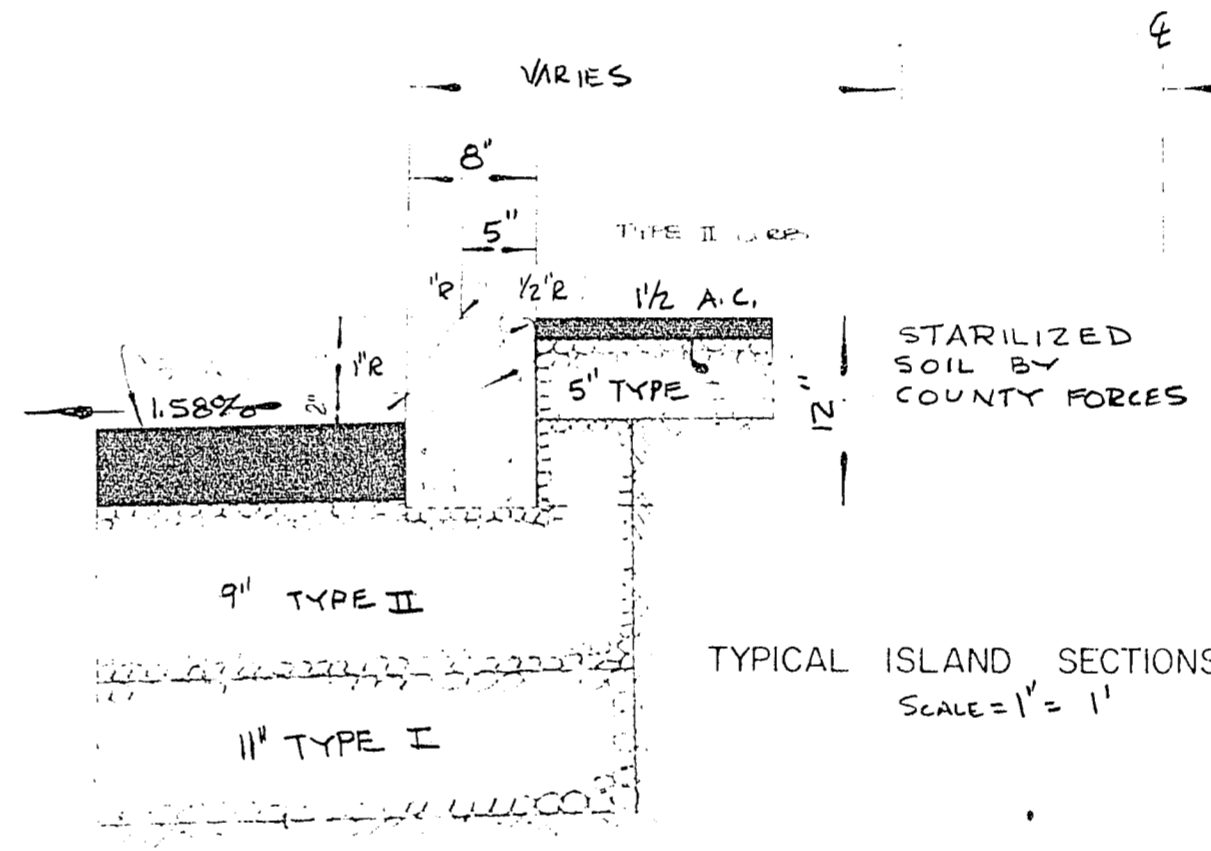
SHOULDER DETAIL
NO SCALE



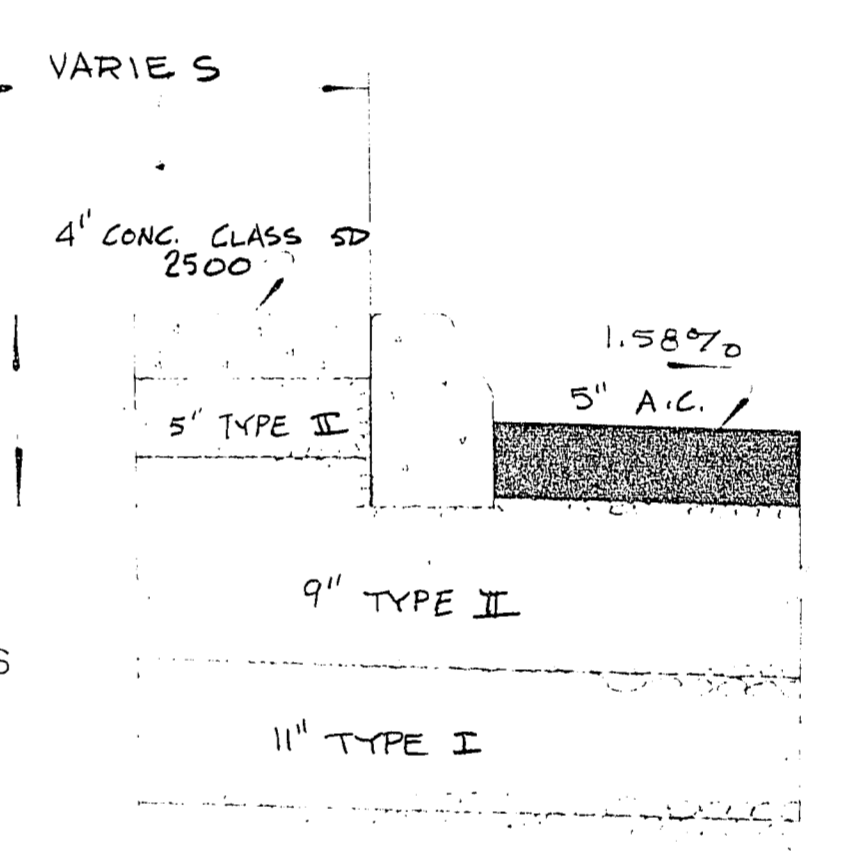
TYPICAL MEDIAN ISLAND
Nellis Blvd
SCALE 1"=10'



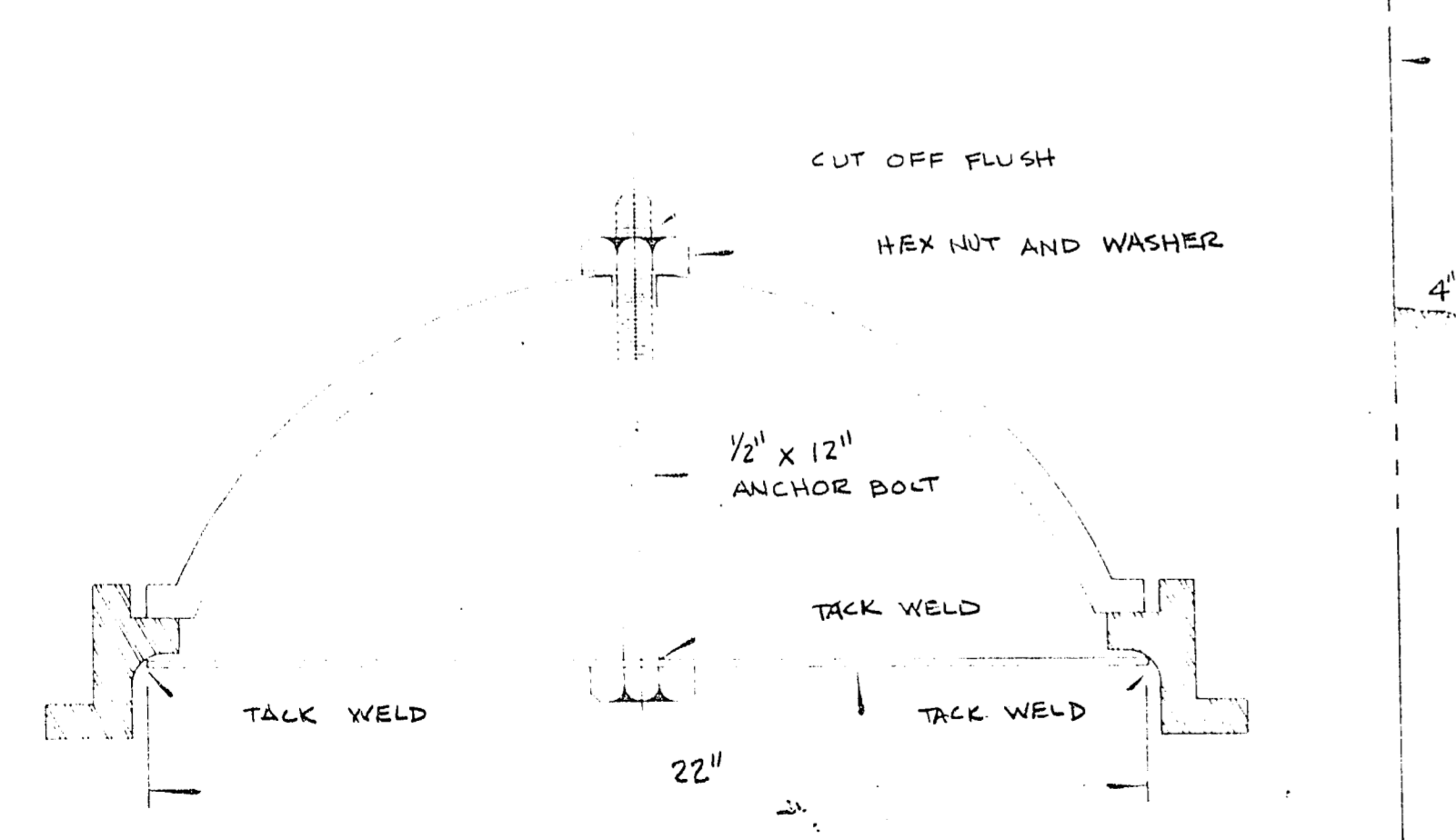
TYPICAL 80' MEDIAN ISLAND
Stewart Ave.
SCALE 1"=5'



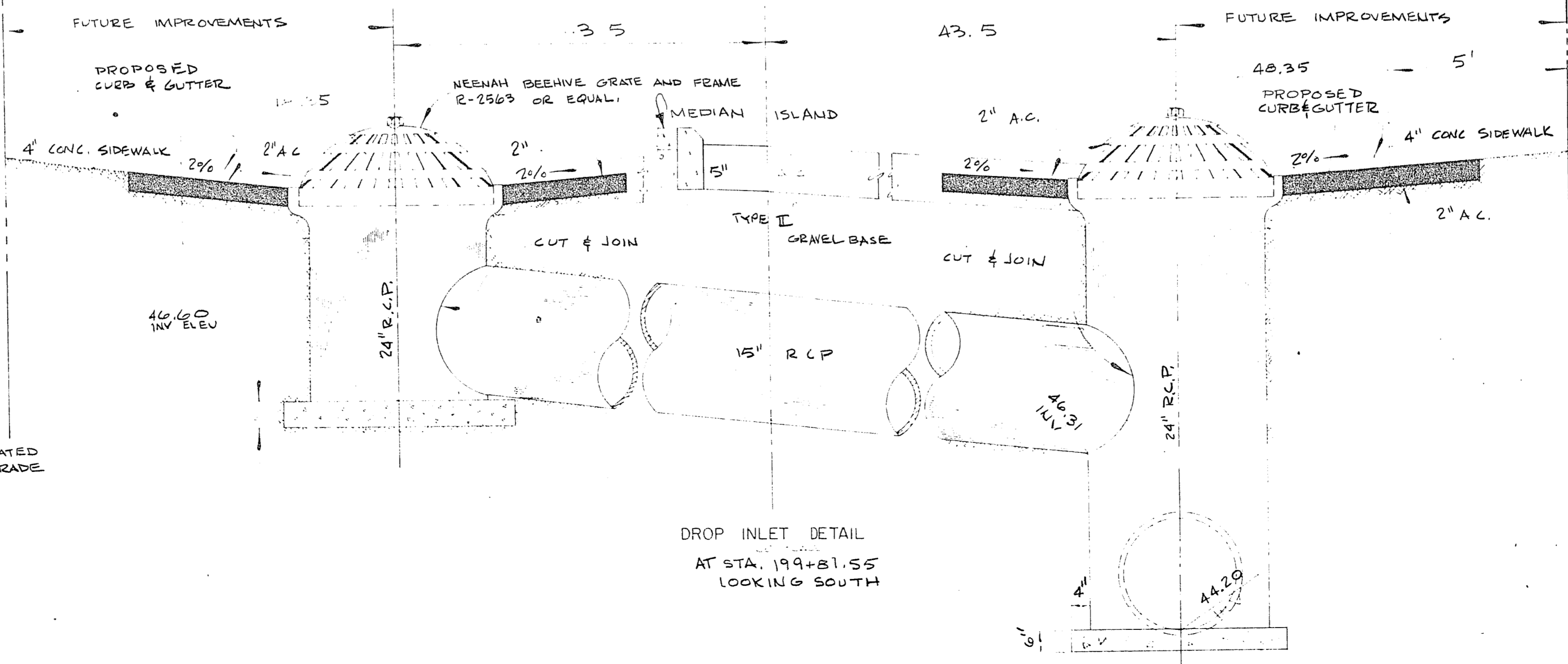
SECTION B-B



SECTION A-A and SECTION C-C



LOCKING DEVICE FOR BEEHIVE GRATE
NO SCALE



DROP INLET DETAIL
AT STA. 199+81.55
LOOKING SOUTH

CONSTRUCTION PLANS

REV. NO.	DATE	DESCRIPTION	APPROVED
CLARK COUNTY, NEVADA ENGINEERING DIVISION			
NELLIS BLVD. AND STEWART AVE. INTERSECTION DETAIL SHEET			
PROJECT NO.	F.L.D. BK.	DATES	SCALE
DRAWN BY	DESIGNED BY	CHECKED BY	APPROVED BY COUNTY ENGINEER
			VERT. SCALE
			HORIZ. SCALE
			DRAWING NO.
			L-886
			SHT. 4 OF 4