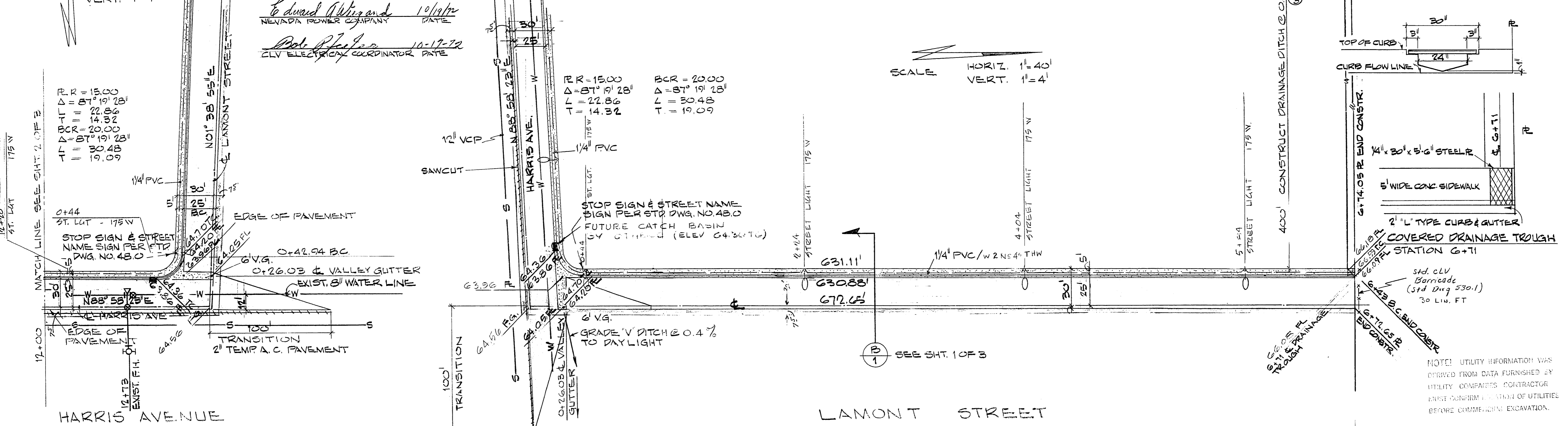


APPROVAL

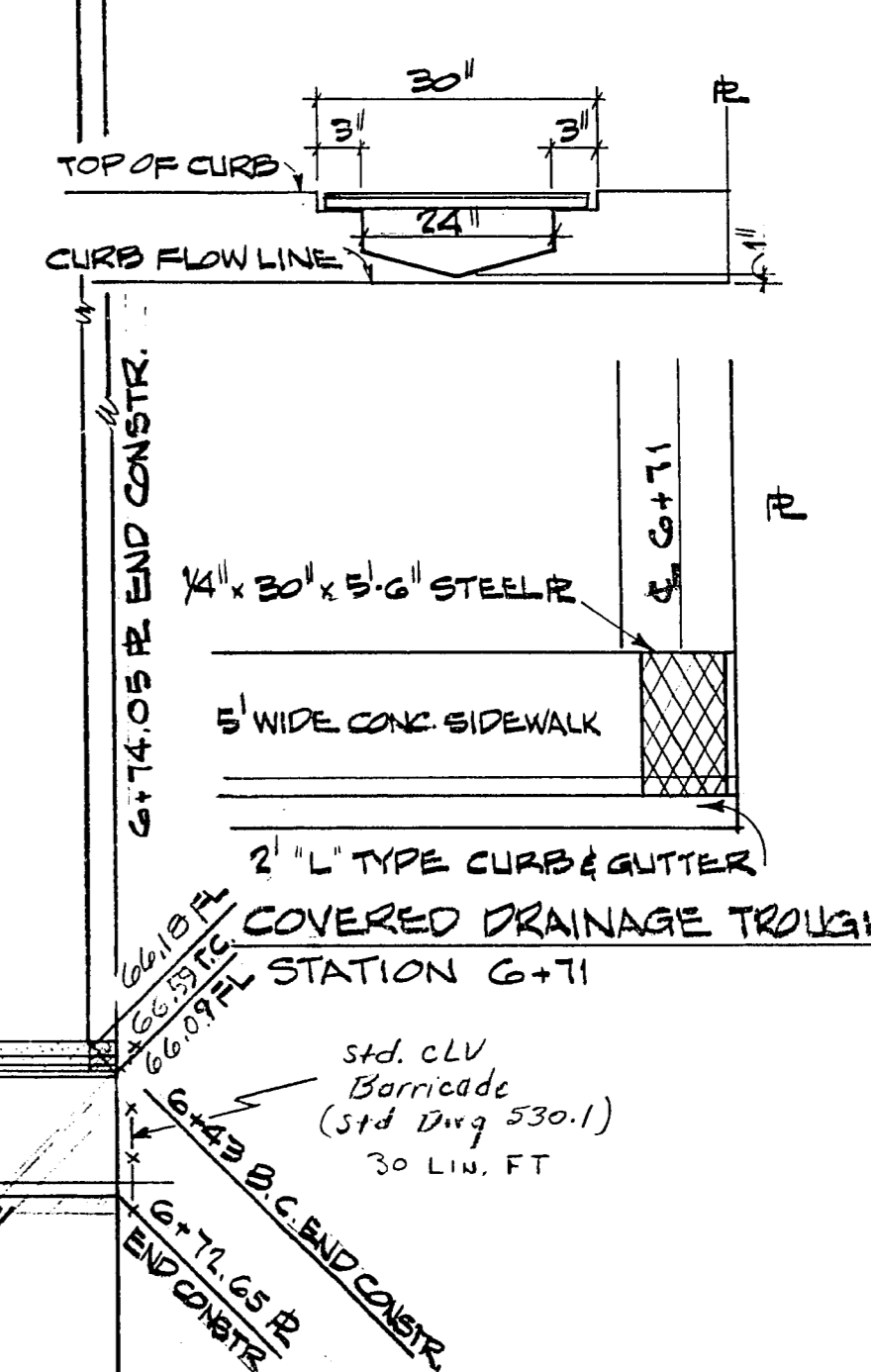
CITY ENGINEER \_\_\_\_\_ DATE \_\_\_\_\_  
 CITY FIELD ENGINEER \_\_\_\_\_ DATE \_\_\_\_\_  
 George Ferris 10-17-72  
 CITY ELECTRICAL ENGINEER DATE  
 Edward A. Wilson 10/19/72  
 NEVADA POWER COMPANY DATE  
 Dale P. Hester 10-17-72  
 CLV ELECTRICAL COORDINATOR DATE

SCALE HORIZ. 1" = 40'  
 VERT. 1" = 4'

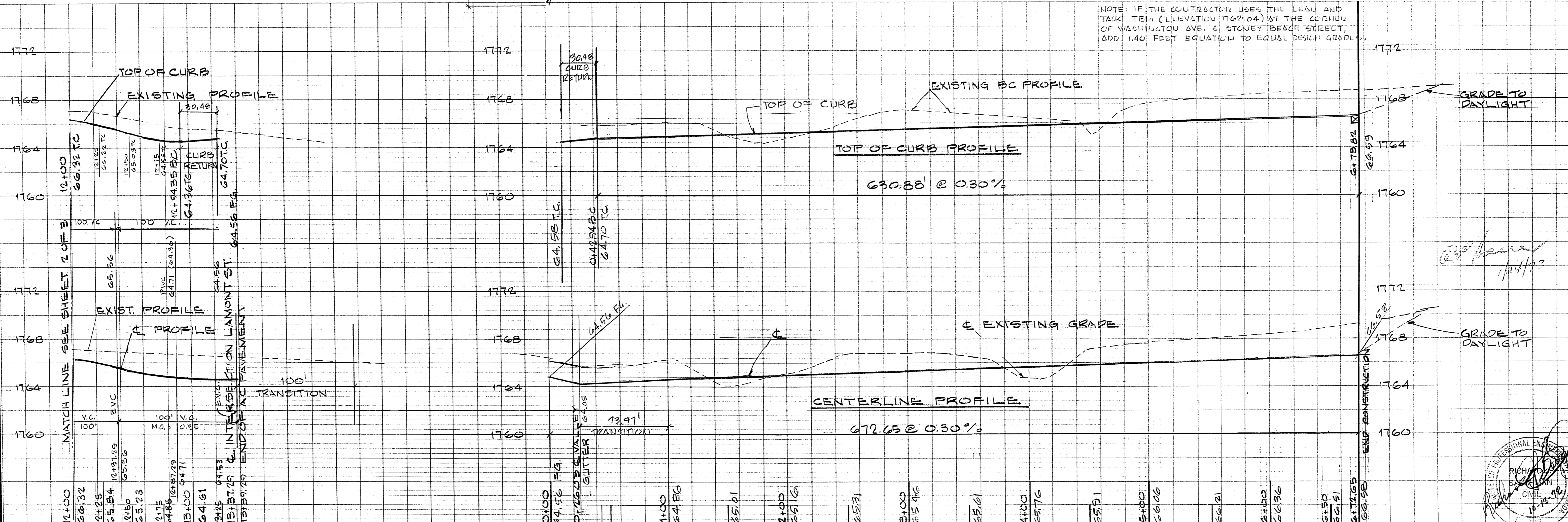
SCALE HORIZ. 1" = 40'  
 VERT. 1" = 4'



SECTION C-C



NOTE: IF THE CONTRACTOR USES THE LEAD AND TALK TRIANGULATION (ELEVATION 1769.04) AT THE CORNER OF WASHINGTON AVE. & STONEY BEACH STREET, ADD 1.40 FEET EQUATION TO EQUAL DESIGN GRADE.



204-51 100-V-895 107-V895

REVISIONS

DATE	NO.	DESCRIPTION
10/17/72	1	CHANGE STREET LOCATION

DATE AUGUST 24 1972  
 DESIGN RJP  
 DRAWN JEK  
 CHECK RJP  
 SCALE AS SHOWN

PREPARED FOR:  
 ZICK & SHARP A.I.A.  
 JR. HIGH SCHOOL NO. 15

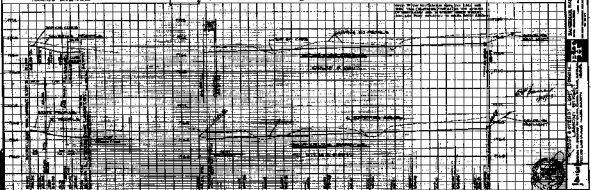
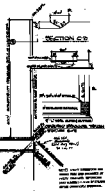
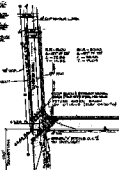
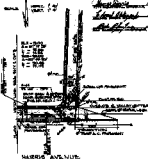
BAUGHMAN, HAUGHT & TURNER  
 CIVIL ENGINEERS  
 MINING ENGINEERS  
 LAND SURVEYORS  
 LAS VEGAS, NEVADA  
 2325 WEST CHARLESTON BOULEVARD  
 702-770-8771

STREET & STREET LIGHT DESIGN  
 LAMONT ST. & HARRIS AVE.  
 SECTION 09, TOWNSHIP 20 SOUTH, RANGE 6 EAST, M.D.B.M.  
 CITY OF LAS VEGAS CLARK COUNTY NEVADA

SHEET 3  
 PROJ. NO.

APPROVAL

BY ENGINEER \_\_\_\_\_  
 J. G. ...  
 ...  
 ...



PROJECT NO. 100-1000  
 SHEET NO. 1 OF 1  
 DATE: 10/15/1910  
 ENGINEER: J. G. ...  
 DRAWN BY: ...  
 CHECKED BY: ...  
 APPROVED BY: ...  
 CITY OF ...  
 DEPARTMENT OF ...  
 100-1000