

POINT TABLE						
POINT #	NORTHING	EASTING	RIM ELEVATION	DESCRIPTION	SSMH #	SSMH INVERT
80073	620467.4021	255217.8679	2241.10'	INV 24" S.S.		
80074	620467.6140	255229.0094	2235.09'	INV 24" S.S.		
80598	620469.1160	254884.4580	2257.32'	72" BARREL EDGE	SSMH #9	2249.52 THRU
80599	620469.1870	254885.9510	2257.35'	38" CL LID	SSMH #9	
80600	620467.8130	255388.0670	2246.91'	72" BARREL EDGE	SSMH #10	2027.89 THRU
80601	620467.6930	255389.5760	2246.92'	38" CL LID	SSMH #10	
80602	620467.3760	255457.8480	2245.34'	72" BARREL EDGE	SSMH #6	2224.89 THRU
80603	620467.2800	255459.3150	2245.26'	38" CL LID	SSMH #6	
80604	620467.0910	255477.8990	2244.76'	72" BARREL EDGE	SSMH #7	2224.37 THRU
80605	620466.9850	255479.3650	2244.77'	38" CL LID	SSMH #7	
80606	620467.4430	255487.9540	2244.61'	72" BARREL EDGE	SSMH #8	2223.58 THRU
80607	620467.5310	255489.4290	2244.49'	38" CL LID	SSMH #8	

PROJECT BENCHMARK
 PROJECT DATUM: NORTH AMERICAN VERTICAL DATUM OF 1988 (NAVD88)
 CITY OF LAS VEGAS BENCHMARK: 1LV10 1E4 (REVISION DATE: JUNE 3, 2002)
 RIVET AND PLATE IN TOP OF CURB AT THE SOUTHWEST CORNER OF DECATUR AND OAKLEY
 ELEVATION= 676.323 (NAVD88) 2218.90 (NAVD88)

BASIS OF BEARINGS AND COORDINATES:

GRID NORTH AS DEFINED BY THE CENTRAL MERIDIAN OF THE NEVADA COORDINATE REFERENCE SYSTEM (NCRS), LAS VEGAS ZONE, NORTH AMERICAN DATUM OF 1983; SAID MERIDIAN BEING COINCIDENT WITH 114°58' WEST OF THE GREENWICH MERIDIAN.
 LINEAR UNIT: US SURVEY FOOT (USFT)
 DATUM (REFERENCE FRAME): NAD 1983 (2011) EPOCH 2010.0
 SYSTEM: NEVADA COORDINATE REFERENCE SYSTEM (NCRS)
 ZONE: LAS VEGAS
 PROJECTION: TRANSVERSE MERCATOR
 STANDARD PARALLEL (AND LATITUDE OF GRID ORIGIN): 36°15'00"N
 LONGITUDE OF CENTRAL MERIDIAN: 114°58'00"W
 NORTHING AT GRID ORIGIN: 200,000,000 M (656,166,666.7 FTUS)
 EASTING AT CENTRAL MERIDIAN: 100,000,000 M (328,083,333.3 FTUS)
 SCALE FACTOR ON CENTRAL MERIDIAN: 1.0001 (EXACT)

- NOTES:
- ALL DISTANCES AND BEARINGS SHOWN HEREON ARE PROJECTED (GRID) VALUES BASED ON THE PRECEDING PROJECTION DEFINITION. THE PROJECTION WAS DEFINED SUCH THAT PROJECTED (GRID) DISTANCES ARE EQUIVALENT TO "GROUND" DISTANCES IN THE PROJECT AREA.
 - GRID BEARINGS SHOWN HEREON (OR IMPLIED BY GRID COORDINATES) DO NOT EQUAL GEODETIC BEARINGS DUE TO MERIDIAN CONVERGENCE.

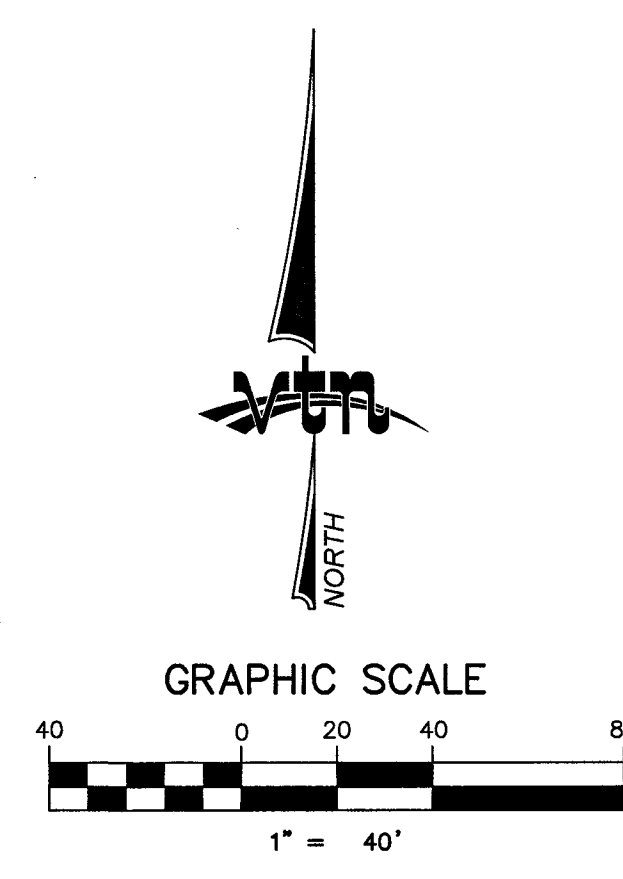
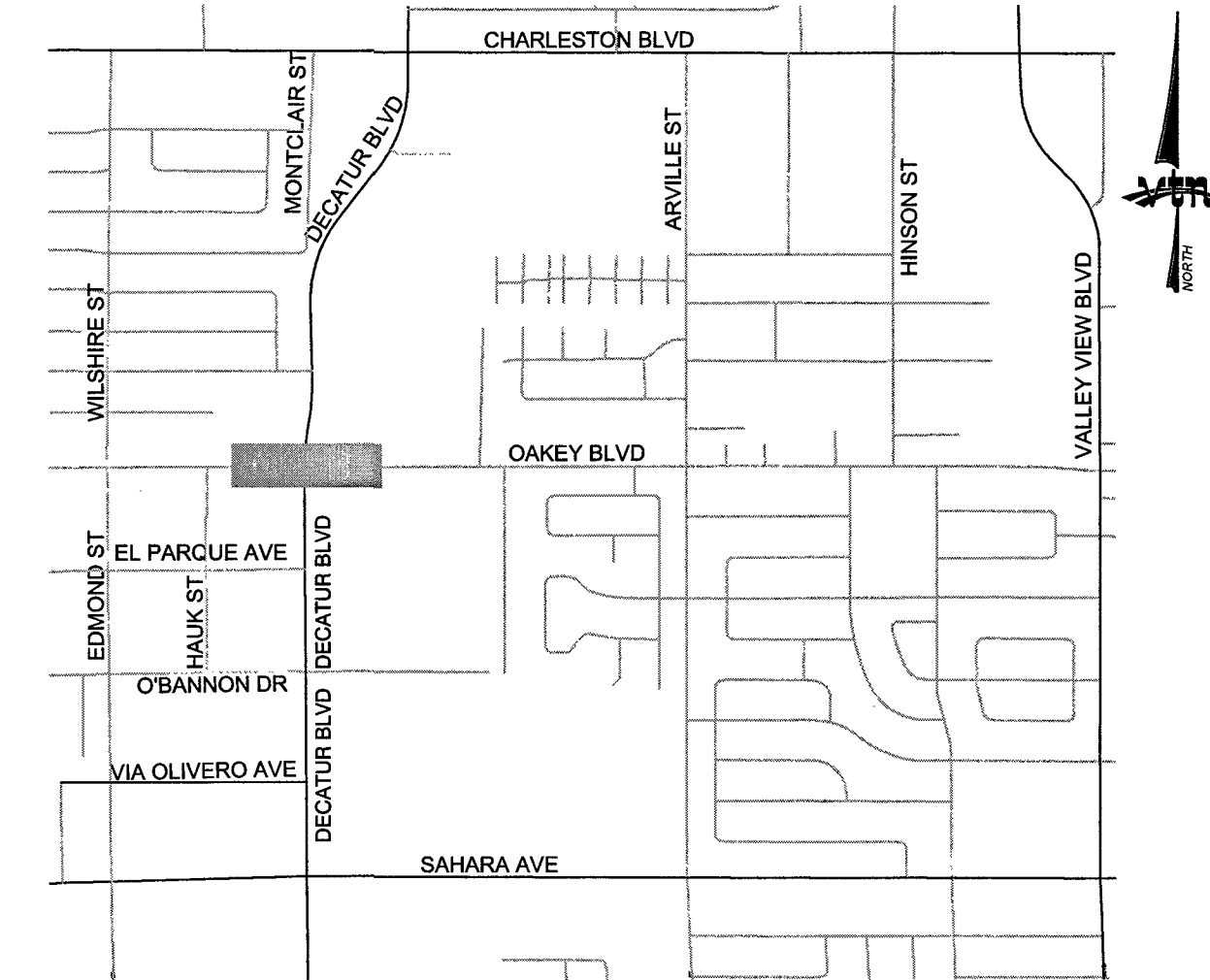
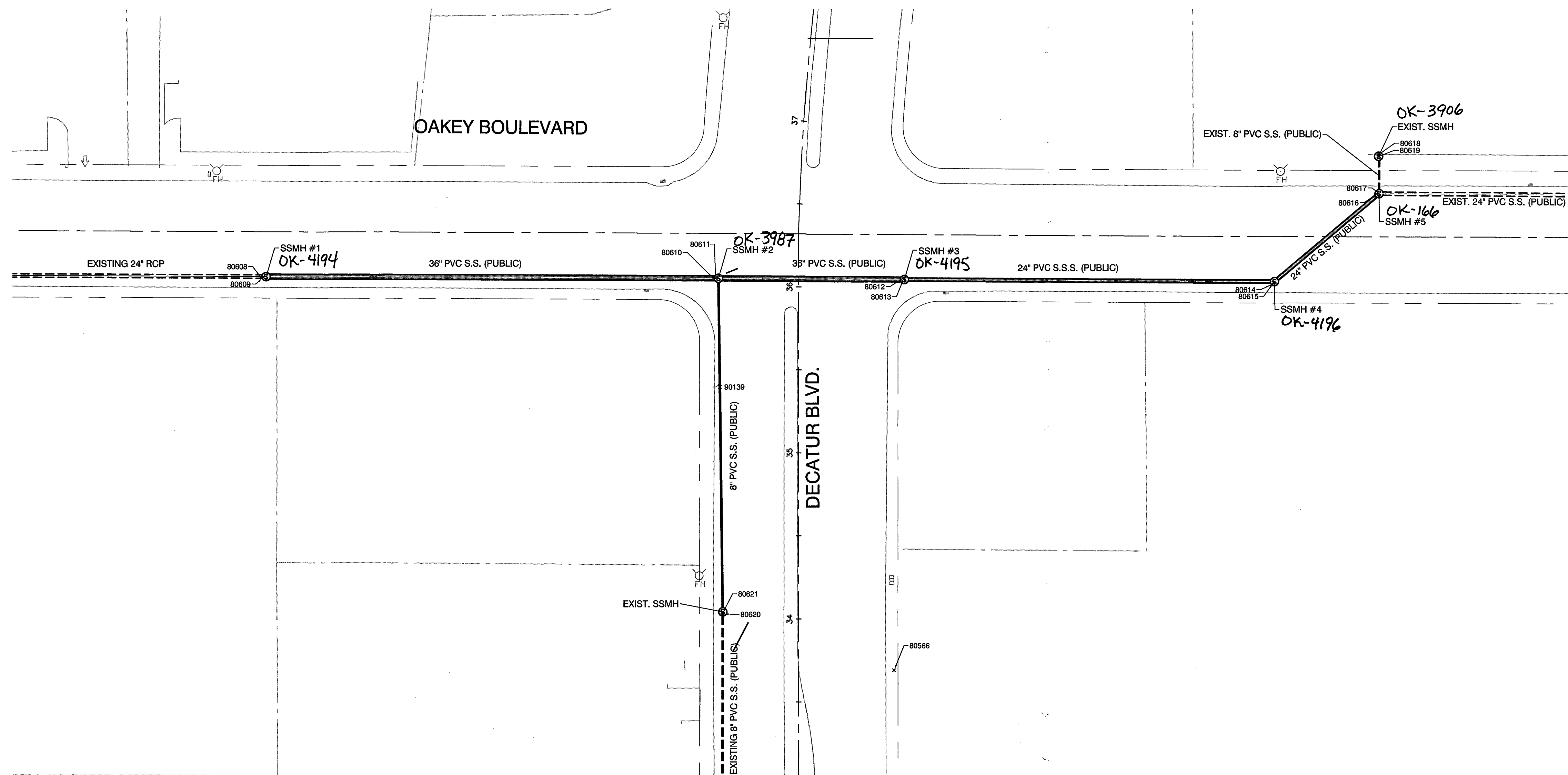
SURVEYOR'S NOTE:

I, RAYMOND D. BOND, A PROFESSIONAL LAND SURVEYOR LICENSED IN THE STATE OF NEVADA, DO HEREBY CERTIFY THAT THE MEASUREMENTS SHOWN ON THE MAP ARE WITHIN THE POSITIONAL CERTAINTY OF 0.3' HORIZONTALLY AND 0.3' VERTICALLY, THE SURVEY WAS COMPLETED ON JULY 13, 2016.
 RAYMOND D. BOND, P.L.S.
 NEVADA LICENSE NO. 16224

ENGINEER DISCLAIMER NOTE:
 UTILITY LOCATIONS SHOWN HEREON ARE APPROXIMATE ONLY. IT SHALL BE THE CONTRACTOR'S RESPONSIBILITY TO DETERMINE THE EXACT HORIZONTAL AND VERTICAL LOCATION OF ALL EXISTING UNDERGROUND AND OVERHEAD UTILITIES AND NOTIFY THE DESIGN ENGINEER IMMEDIATELY OF ANY DISCREPANCIES PRIOR TO COMMENCING CONSTRUCTION. NO REPRESENTATION IS MADE THAT ALL EXISTING UTILITIES ARE SHOWN HEREON. THE ENGINEER ASSUMES NO RESPONSIBILITY FOR UTILITIES NOT SHOWN OR UTILITIES NOT SHOWN IN THEIR PROPER LOCATION.

UTILITY CROSSING NOTE:
 ALL SEWER/STORM DRAINS CROSSING WATER LINES MUST CONFORM TO SECTION 2.22 OF UNIFORM DESIGN AND CONSTRUCTION STANDARDS FOR PORTABLE WATER SYSTEMS (UDACS) FOR WATER AND STORM MAIN CROSSINGS AND CLEARANCES.

CITY OF LAS VEGAS	
ACC SOUTHWEST 485 N. LAUREL SUITE A LAS VEGAS, NEVADA 89115 702-448-9472	7272 SOUTH RAINBOW BOULEVARD LAS VEGAS, NEVADA 89148-5148 PH. (702) 875-7550 FAX (702) 862-2557 WEB WWW.ITMNV.COM CONSULTING ENGINEERS • PLANNERS • LAND SURVEYORS
OAKLEY MEADOWS STORM DRAIN PHASE 3	SANITARY SEWER FINAL LOCATION MAP
DRAWN BY: CLR 07/18/16	DESIGNED BY: ATBIS 03/09/2015
CHECKED BY: RDB 07/18/16	PROJECT NO: 119116
SCALE: 1"=40'	HORIZ. VERT.
SHEET 1 OF 2 SHEETS	
DRAWING NO. 327V284-3-1	



LEGEND

- BACK OF CURB LINE
- STREET CENTERLINE
- ROW
- CONSTRUCTED SEWER
- EXISTING SEWER
- SANITARY SEWER MANHOLE AS DESCRIBED

POINT TABLE						
POINT #	NORTHING	EASTING	RIM ELEVATION	DESCRIPTION	SSMH #	SSMH INVERT
80509	621865.5670	256931.7570	2211.38'	CL 38" LID	SSMH #24	
80608	620462.2150	256453.5030	2223.16'	72" BARREL EDGE	SSMH #1	2203.49 THRU
80609	620462.1730	256455.0110	2223.22'	38" CL LID	SSMH #1	
80610	620461.2210	256728.1470	2218.65'	72" BARREL EDGE	SSMH #2	2202.35 THRU
80611	620461.2440	256729.6000	2218.64'	38" CL LID	SSMH #2	2203.72 8" INV. IN
80612	620460.5270	256841.7390	2216.54'	72" BARREL EDGE	SSMH #3	2201.74 THRU
80613	620460.5650	256843.2140	2216.55'	38" CL LID	SSMH #3	
80614	620457.4280	257066.7720	2208.74'	72" BARREL EDGE	SSMH #4	2191.86 THRU
80615	620458.4010	257067.8920	2208.73'	38" CL LID	SSMH #4	
80616	620511.6750	257130.3980	2207.00'	72" BARREL EDGE	SSMH #5	2188.36 THRU
80617	620511.7970	257131.7370	2206.65'	38" CL LID	SSMH #5	2189.819 8" INV. IN
80618	620535.5570	257131.8470	2207.74'	48" BARREL EDGE	EXIST. SSMH	2191.65 THRU
80619	620534.3660	257131.8790	2207.63'	24" CL LID	EXIST. SSMH	
80620	620259.1040	256733.7900	2217.37'	48" BARREL EDGE	EXIST. SSMH	2205.11 8" THRU
80621	620260.1420	256733.7560	2217.36'	24" CL LID	EXIST. SSMH	
90139	620395.7952	256731.9885	2204.86'	TOP 8" @ LAT		

PROJECT BENCHMARK
 PROJECT DATUM: NORTH AMERICAN VERTICAL DATUM OF 1988 (NAVD88)
 CITY OF LAS VEGAS BENCHMARK: 1LV10 1E4 (REVISION DATE: JUNE 3, 2002)
 RIVET AND PLATE IN TOP OF CURB AT THE SOUTHWEST CORNER OF DECATUR AND OAKEY ELEVATION= 676.323 (NAVD88) 2218.90 (NAVD88)

BASIS OF BEARINGS AND COORDINATES:

GRID NORTH AS DEFINED BY THE CENTRAL MERIDIAN OF THE NEVADA COORDINATE REFERENCE SYSTEM (NCRS), LAS VEGAS ZONE, NORTH AMERICAN DATUM OF 1983; SAID MERIDIAN BEING COINCIDENT WITH 114°58' WEST OF THE GREENWICH MERIDIAN.
 LINEAR UNIT: US SURVEY FOOT (USFT)
 DATUM (REFERENCE FRAME): NAD 1983 (2011) EPOCH 2010.0
 SYSTEM: NEVADA COORDINATE REFERENCE SYSTEM (NCRS)
 ZONE: LAS VEGAS
 PROJECTION: TRANSVERSE MERCATOR
 STANDARD PARALLEL (AND LATITUDE OF GRID ORIGIN): 36°15'00"N
 LONGITUDE OF CENTRAL MERIDIAN: 114°58'00"W
 NORTHING AT GRID ORIGIN: 200,000,000 M (656,166,666.7 FTUS)
 EASTING AT CENTRAL MERIDIAN: 100,000,000 M (328,083,333.3 FTUS)
 SCALE FACTOR ON CENTRAL MERIDIAN: 1.0001 (EXACT)

- NOTES:
- ALL DISTANCES AND BEARINGS SHOWN HEREON ARE PROJECTED (GRID) VALUES BASED ON THE PRECEDING PROJECTION DEFINITION. THE PROJECTION WAS DEFINED SUCH THAT PROJECTED (GRID) DISTANCES ARE EQUIVALENT TO "GROUND" DISTANCES IN THE PROJECT AREA.
 - GRID BEARINGS SHOWN HEREON (OR IMPLIED BY GRID COORDINATES) DO NOT EQUAL GEODETIC BEARINGS DUE TO MERIDIAN CONVERGENCE.

SURVEYOR'S NOTE:

I, RAYMOND D. BOND, A PROFESSIONAL LAND SURVEYOR LICENSED IN THE STATE OF NEVADA, DO HEREBY CERTIFY THAT THE MEASUREMENTS SHOWN ON THE MAP ARE WITHIN THE POSITIONAL CERTAINTY OF 0.3' HORIZONTALLY AND 0.3' VERTICALLY, THE SURVEY WAS COMPLETED ON JULY 13, 2016.

RAYMOND D. BOND, P.L.S.
 NEVADA LICENSE NO. 16224

ENGINEER DISCLAIMER NOTE:
 UTILITY LOCATIONS SHOWN HEREON ARE APPROXIMATE ONLY. IT SHALL BE THE CONTRACTOR'S RESPONSIBILITY TO DETERMINE THE EXACT HORIZONTAL AND VERTICAL LOCATION OF ALL EXISTING UNDERGROUND AND OVERHEAD UTILITIES AND NOTIFY THE DESIGN ENGINEER IMMEDIATELY OF ANY DISCREPANCIES PRIOR TO COMMENCING CONSTRUCTION. NO REPRESENTATION IS MADE THAT ALL EXISTING UTILITIES ARE SHOWN HEREON. THE ENGINEER ASSUMES NO RESPONSIBILITY FOR UTILITIES NOT SHOWN OR UTILITIES NOT SHOWN IN THEIR PROPER LOCATION.

UTILITY CROSSING NOTE:
 ALL SEWER/STORM DRAINS CROSSING WATER LINES MUST CONFORM TO SECTION 2.22 OF UNIFORM DESIGN AND CONSTRUCTION STANDARDS FOR PORTABLE WATER SYSTEMS (UDACS) FOR WATER AND STORM MAIN CROSSINGS AND CLEARANCES.

CITY OF LAS VEGAS	
ACC SOUTHWEST LAS VEGAS, NEVADA 89115 702-943-5472	2727 SOUTH RAINBOW BOULEVARD LAS VEGAS, NEVADA 89146-5148 PH. (702) 979-7650 FAX (702) 962-6967 WEB WWW.VTNV.COM CONSULTING ENGINEERS • PLANNERS • LAND SURVEYORS
RAYMOND D. BOND P.L.S. NEVADA LICENSE NO. 16224	DATE: _____ BY: _____ REV: _____
OAKEY MEADOWS STORM DRAIN PHASE 3	
SANITARY SEWER FINAL LOCATION MAP	
DRAWN BY: CLR 07/18/16	DESIGNED BY: ATRIS 03/09/2015
CHECKED BY: RDB 07/18/16	PROJECT NO: 713
SCALE: 1"=40'	HORIZ. VERT.
SHEET 2 OF 2 SHEETS	
DRAWING NO. 327V284-3	
CLV GRID PROJECT NO. H26844	