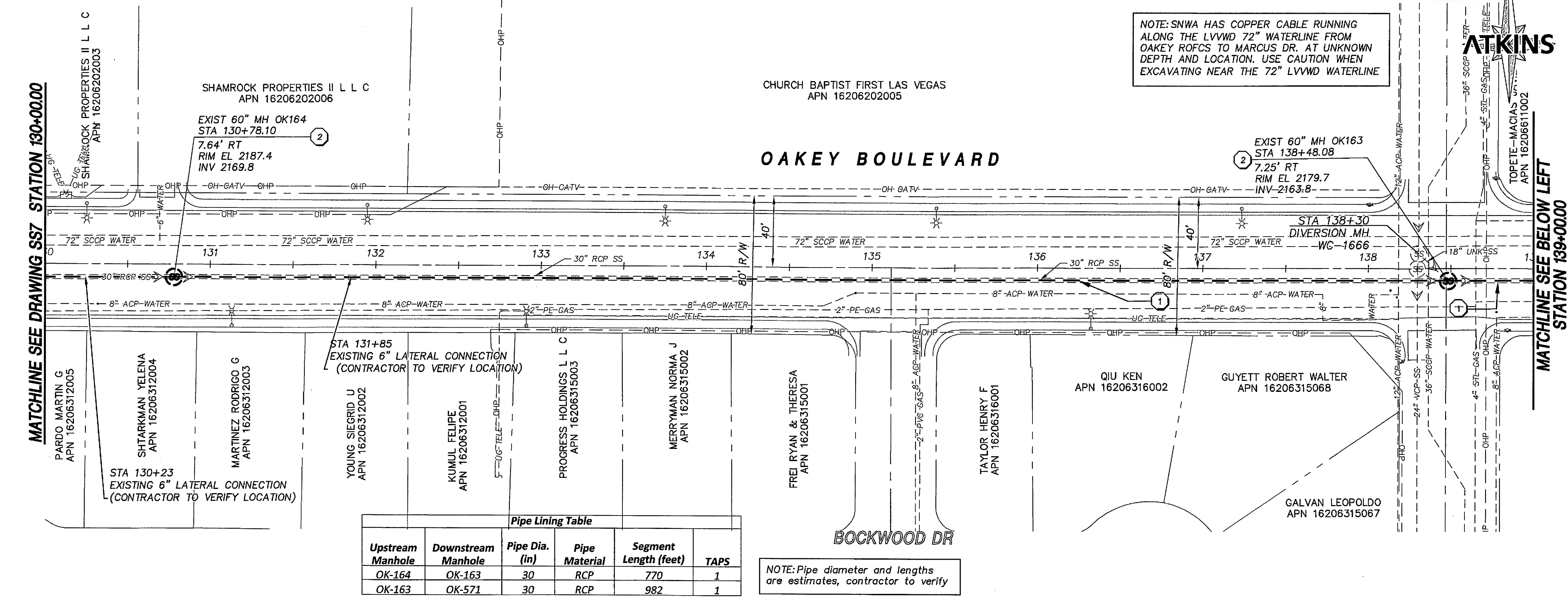


X:\Projects\151566 Oakley Sewer Rehab\Sheets\151566-2-SS08 1-12-15 08:57am

MATCHLINE SEE DRAWING S57 STATION 130+00.00

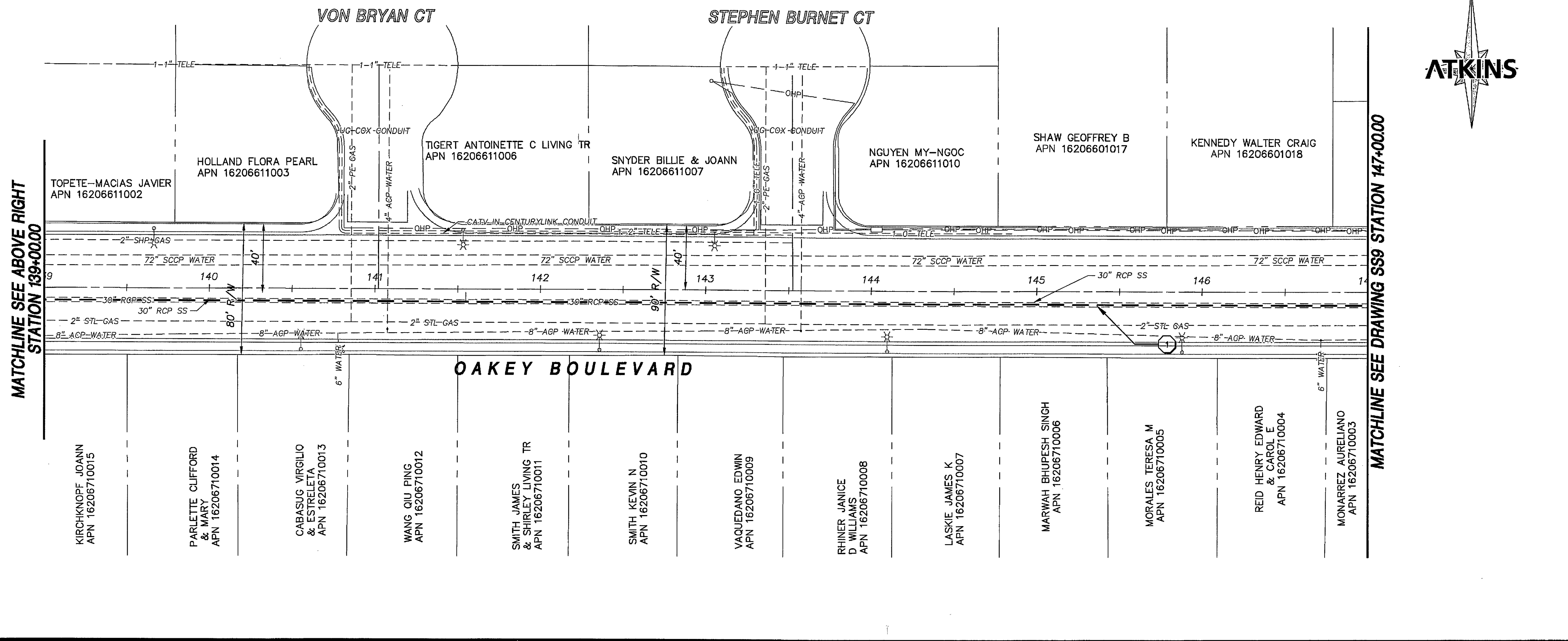
MATCHLINE SEE ABOVE RIGHT STATION 139+00.00

MATCHLINE SEE DRAWING S59 STATION 147+00.00



Upstream Manhole	Downstream Manhole	Pipe Dia. (in)	Pipe Material	Segment Length (feet)	TAPS
OK-164	OK-163	30	RCP	770	1
OK-163	OK-571	30	RCP	982	1

NOTE: Pipe diameter and lengths are estimates, contractor to verify



- SANITARY SEWER CONSTRUCTION NOTES**
- INSTALL OIP LNER IN EXISTING PIPE PER DETAIL 1/SHEET CD-2 AND SPECIFICATION SPECIAL PROVISIONS 690.
 - REHABILITATE MANHOLE WITH COATING SYSTEM PER DETAIL 2/SHEET CD-2 AND IN ACCORDANCE WITH SPECIAL PROVISION 691 FOR OIP LNER TERMINATION AND MANHOLE REHABILITATION SEE DETAIL 2/SHEET CD-2
 - INSTALL OIP SPOT REPAIR PER DETAIL 3 OR DETAIL 4 ON SHEET CD-2 AND SPECIFICATION SPECIAL PROVISIONS 690
 - ABANDON MANHOLE PER DETAIL 3/CD-1 AND PER DCSWS SECTION 3.18.2.g
 - ABANDON PIPE PER DCSWS SECTION 3.18.1 UPON APPROVAL BY CITY

AS BUILT DRAWINGS

CONTRACTOR SHALL FIELD LOCATE AND PROTECT ALL SNWA/SNWS APPURTENANCES INCLUDING, BUT NOT LIMITED TO AV/AR, ACCESS MANWAYS AND CATHODIC PROTECTION SYSTEMS. ALL ABOVE GROUND STRUCTURES AND AT GRADE STRUCTURES MUST BE ADJUSTED TO NEW GRADE AT CONTRACTOR'S EXPENSE. CATHODIC PROTECTION TEST STATIONS, RECTIFIERS, AND AV/AR'S MUST BE RELOCATED TO THE SIDEWALK PER SNWA STANDARDS, AND AT THE CONTRACTOR'S EXPENSE. CONTRACTOR TO NOTIFY SOUTHERN NEVADA WATER AUTHORITY, DEVELOPMENT PLAN REVIEW, AT (702) 258-3165 AT LEAST 48 HOURS PRIOR TO CONSTRUCTION ACTIVITY.

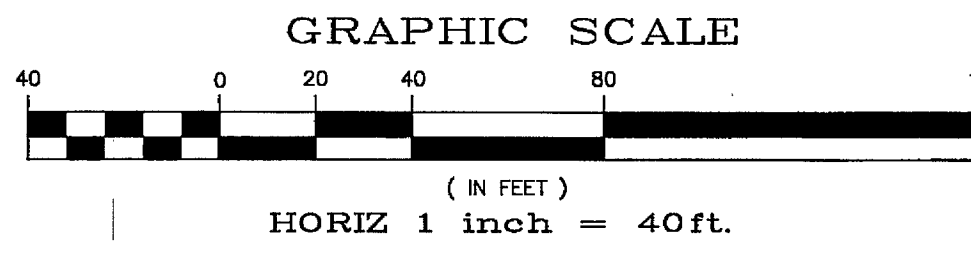
M. DISHAR 1/21/15 DATE
 SOUTHERN NEVADA WATER AUTHORITY
 DPRS# 2014-0070

APPROVED FOR CONSTRUCTION
M. DISHAR
 Las Vegas Valley Water District Engineering Services Manager
 Date 1/21/15 Project No. 12347 ESN 018

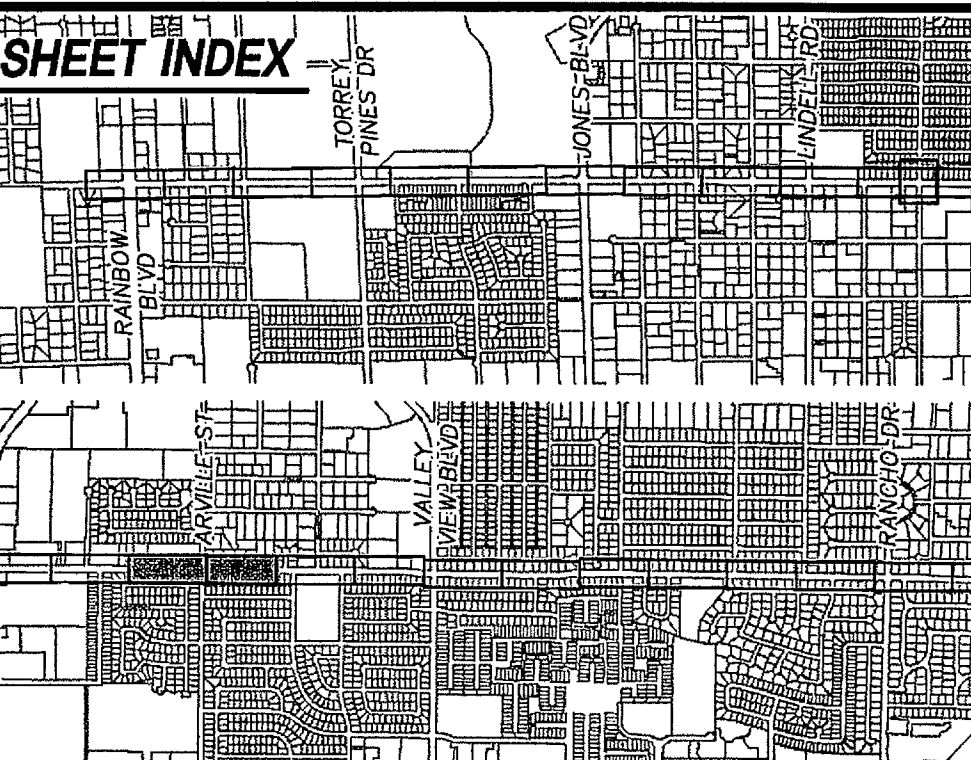
Call before you Dig
Call 811
 1-800-227-2600

FAST
 Call before you Underground
 1-702-432-5300

CALL BEFORE YOU OVERHEAD
 1-702-227-2929



UTILITY NOTE:
 ALL EXISTING UTILITY LOCATIONS SHOWN HEREON ARE APPROXIMATE ONLY. IT SHALL BE THE CONTRACTOR'S RESPONSIBILITY TO DETERMINE THE EXACT VERTICAL AND HORIZONTAL LOCATION OF ALL EXISTING UNDERGROUND UTILITIES PRIOR TO COMMENCING CONSTRUCTION.
 NO REPRESENTATION IS MADE THAT ALL UTILITIES ARE SHOWN HEREON. THE ENGINEER ASSUMES NO RESPONSIBILITY FOR UTILITIES NOT SHOWN IN THEIR PROPER LOCATIONS.
 THE DEPTH BELOW GRADE OF THE VARIOUS UTILITIES DEPICTED ON THE PLANS VARIES THROUGHOUT THE PROJECT AREA. THE CONTRACTOR SHALL EXERCISE EXTREME CARE WHEN EXCAVATING AND GRADING THE SUBBASE IN THE VICINITY TO AVOID DAMAGE TO THE LATTER.



ATKINS
 2270 Corporate Circle Suite
 200 Henderson, Nevada
 89074 Telephone: 702/263-7275
 Fax: 702/263-7200

DEPARTMENT OF PUBLIC WORKS
CAPITAL PROJECT MANAGEMENT SECTION
 CITY ENGINEER: ALLEN PAVELKA, P.E.
 CITY PROJECT MANAGER: MICHAEL STRUDLOVANT, P.E.
 PROJECT MANAGER: HEDI DEXHEIMER, P.E.
 DESIGN BY: MAC
 CHECK BY: MAC/THAD
 DRAWN BY: TJW
 DATE: JAN 2015

OAKLEY BOULEVARD SANITARY SEWER REHABILITATION- RAINBOW BOULEVARD TO RANCHO DRIVE
SANITARY SEWER REHABILITATION PLAN
 STA 130+00.00 TO STA 147+00.00

PROFESSIONAL ENGINEER STATE OF NEVADA
 HEDI A. DEXHEIMER
 EXP. 12-31-18
 CIVIL
 No. 14288
 11215

SHEET: **SS8**
 12 of 29
 DRAWING# XXX-XX