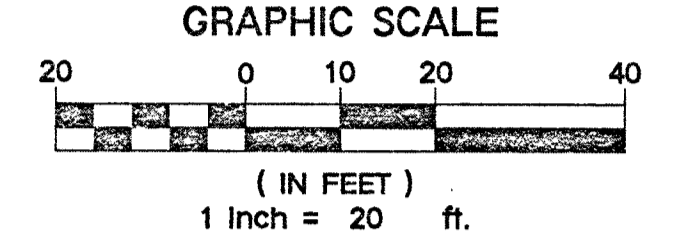
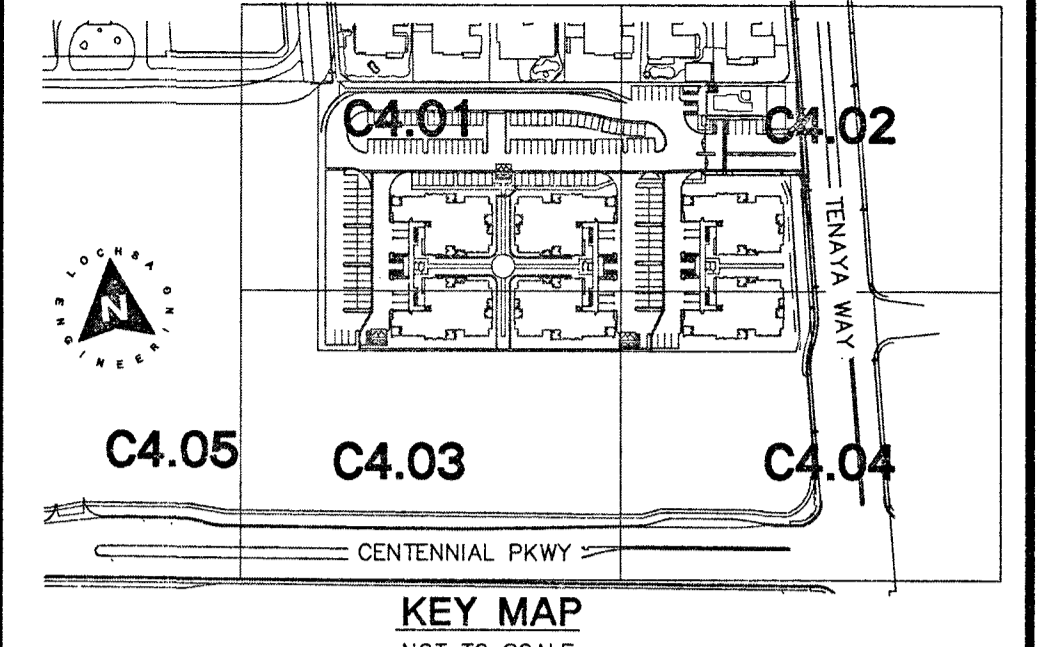


N/A RPDA CONNECTION SECTION NOT TO SCALE



WARNING FIRE LINE (NON-POTABLE WATER) ALL EX. RELOCATED OR PROPOSED RPDA INSTALLATIONS
 TO COMPLY WITH THE FEDERAL SAFE DRINKING WATER ACT, THE FIRE LINE OR ANY OF ITS COMPONENTS SHALL NOT BE USED FOR POTABLE DRINKING WATER AT ANY TIME.

NOTE:
 ALL SEWER/STORM DRAIN CROSSING WATER LINES MUST CONFORM TO SECTION 2.22 OF THE UNIFORM DESIGN AND CONSTRUCTION STANDARDS FOR POTABLE WATER SYSTEMS (UDACS) FOR WATER AND STORM CROSSING AND CLEARANCES.

FIRE FLOW CALCULATIONS

BASED ON:

SQUARE FOOTAGE:	56,298
LARGEST AREA BETWEEN 4 HR. AREA SEPARATION WALLS:	56,298
BUILDING HEIGHT:	41'
NUMBER OF STORIES:	3
TYPE OF CONSTRUCTION:	VB
OCCUPANCY:	R-2
SPRINKLER SYSTEM:	NFPA-13 YES
EXPOSURES:	2
ROOF CONSTRUCTION:	1-HR TRUSSES
FLOW REQUIRED @ 20 PSI RESIDUAL:	3250 GPM
MAX. STORAGE HEIGHT:	N/A

NOTE:
 BUILDINGS 1 & 1A, 2 & 2A, 3 & 3A ARE CONNECTED ON LEVELS 2 AND 3 BY WALKWAYS AND ARE CONSIDERED AS ONE COMPLETE BUILDING FOR EACH SET AND WILL BE FED BY ONE FIRE RISER ROOM AND FDC.

NOTE:
 CONTRACTOR TO INCLUDE COST OF UNDERGROUND UTILITY DETECTION COMPANY TO LOCATE AND MARK ALL EXISTING UTILITIES PRIOR TO ANY DEMOLITION OR EXCAVATION. ENGINEER TO BE PROVIDED WITH AS-BUILT SKETCH OF EXISTING UTILITIES, AND IS TO BE NOTIFIED IMMEDIATELY OF ANY POTENTIAL CONFLICTS WITH PROPOSED UTILITIES AND/OR FINISHED GRADES.

- WATER CONSTRUCTION NOTES:**
- ALL WATER CONSTRUCTION TO BE DONE IN ACCORDANCE WITH "UNIFORM DESIGN AND CONSTRUCTION STANDARDS FOR WATER DISTRIBUTION SYSTEMS (UDACS)" LATEST EDITION.
 - NOT ALL NOTES USED ON THIS SHEET -
 - 1) INSTALL BEND W/THRUST BLOCK (SAME SIZE AS PIPE) PER UDACS PLATE NO. 31.
 - 2) INSTALL TEE (SAME SIZE AS PIPES), PER UDACS PLATE NO. 31.
 - 3) INSTALL FIRE HYDRANT W/GATE VALVE PER UDACS PLATE NO. 40.
 - 4) INSTALL 10" RPDA PER UDACS PLATE NO. 59.
 - 5) INSTALL GATE VALVE (SAME SIZE AS PIPE), PER UDACS PLATE NO. 30 AND 39.
 - 6) INSTALL 6" TURBINE WATER METER IN A VAULT PER UDACS PLATE NO. 52, VAULT PER C-475.
 - 7) INSTALL 6" RPPA PER UDACS PLATE NO. 56.
 - 8) STUB & CAP WATER SERVICE. REFER TO PLUMBING PLANS FOR CONTINUATION.
 - 9) STUB & CAP WATER SERVICE. REFER TO LANDSCAPING/IRRIGATION PLANS FOR CONTINUATION.
 - 10) STUB & CAP WATER SERVICE.
 - 11) REMOVE CAP AND CONNECT TO EX. WATER STUB.
 - 12) CONTRACTOR TO VERIFY CROSSING AND INSTALL WATER PER UDACS SECTION 2.2.2.
 - 13) INSTALL 2" RPPA PER UDACS PLATE NO. 8. (PRIVATE)

- SEWER CONSTRUCTION NOTES:**
- NOT ALL NOTES USED ON THIS SHEET -
 - ALL GRAVITY SANITARY SEWER LINES TO BE SDR-35 PVC.
 - 1) INSTALL 48" SANITARY SEWER MANHOLE & BASE PER DCSWCS DWG. NO. SD-1A & SD-1B, CONCRETE COLLAR PER SD-4, & SD-2 FOR MANHOLE COVER AND RING.
 - 2) INSTALL WYE LATERAL CONNECTION PER DCSWCS DWG. NO. SD-22.
 - 3) STUB & CAP SANITARY SEWER SERVICE. REFER TO PLUMBING PLANS FOR CONTINUATION.
 - 4) STUB AND CAP FOR FUTURE USE.
 - 5) INSTALL TERMINAL CLEAN OUT PER DETAIL 3 ON C6.02.
 - 6) INSTALL C900 PIPE WHERE SEWER LINE IS LESS THAN 10' CLEAR OF WATER LINE.
 - 7) MANHOLE TO BE INSTALLED WITH FIELD APPLIED CORROSION PROTECTION.
 - 8) INSTALL CLEAN OUT PER DETAIL 2 ON C6.02.

NOTE:
 ALL ABOVE GROUND UTILITY SHALL COMPLY WITH TITLE 19.08.010 UTILITY SCREENING REQUIREMENTS. ALL ABOVE GROUND UTILITIES GREATER THAN 27 CUBIC FEET SHALL BE SETBACK A MINIMUM OF 3 FEET FROM THE BACK OF SIDEWALK AND SHALL INCLUDE VEGETATION THAT UPON MATURITY WILL ADEQUATELY SCREEN SUCH EQUIPMENT FROM PUBLIC VIEW.

CITY OF LAS VEGAS FIRE DEPARTMENT APPROVAL

By: *[Signature]* DATE: 12/15/15

APPROVAL OF THESE PLANS SHALL NOT BE CONSTRUED TO BE A PERMIT FOR, OR AN APPROVAL OF, ANY VIOLATION OF ANY OF THE PROVISIONS OF THE STATE OR COUNTY LAWS, FIRE FLOW 3250 GPM AT 20 P.S.I. RESIDUAL.

FIRE DEPARTMENT APPROVAL

APPROVAL BY THE FIRE DEPARTMENT HAVING JURISDICTION IS REQUIRED PRIOR TO OBTAINING FINAL APPROVAL FROM THE LAS VEGAS VALLEY WATER DISTRICT.

APPROVED FOR CONSTRUCTION

FIRST APPROVED DATE: 6-11-15

By: *[Signature]* DATE: 12/16/15

PROJECT No. 123173

LVWD APPROVED FIRE FLOW = 3250 GPM AT 20 PSI RESIDUAL

NOTE: ALL LOCATIONS OF UTILITIES SHOWN ARE APPROXIMATE

NOTE:
 LOCHSA ENGINEERING ASSUMES NO RESPONSIBILITY FOR EXISTING UTILITY LOCATIONS AND ELEVATIONS. THE UTILITIES SHOWN ON THIS PLAN ARE FROM THE BEST AVAILABLE INFORMATION. IT IS THE CONTRACTOR'S RESPONSIBILITY TO FIELD VERIFY THE LOCATION AND ELEVATION OF ALL UTILITIES, INCLUDING BUT NOT LIMITED TO, THE WATER, FIRE, SANITARY SEWER, STORM SEWER, TELEPHONE, POWER, GAS, AND IRRIGATION LINES PRIOR TO THE COMMENCEMENT OF CONSTRUCTION. IF CONFLICT EXISTS IN THE FIELD, THE CONTRACTOR IS TO NOTIFY THE PROJECT ARCHITECT, OWNER'S REPRESENTATIVE AND THE PROJECT ENGINEER IMMEDIATELY.

SAFETY ALERT

Call before you dig

Call before you dig

Call before you dig

Call before you dig

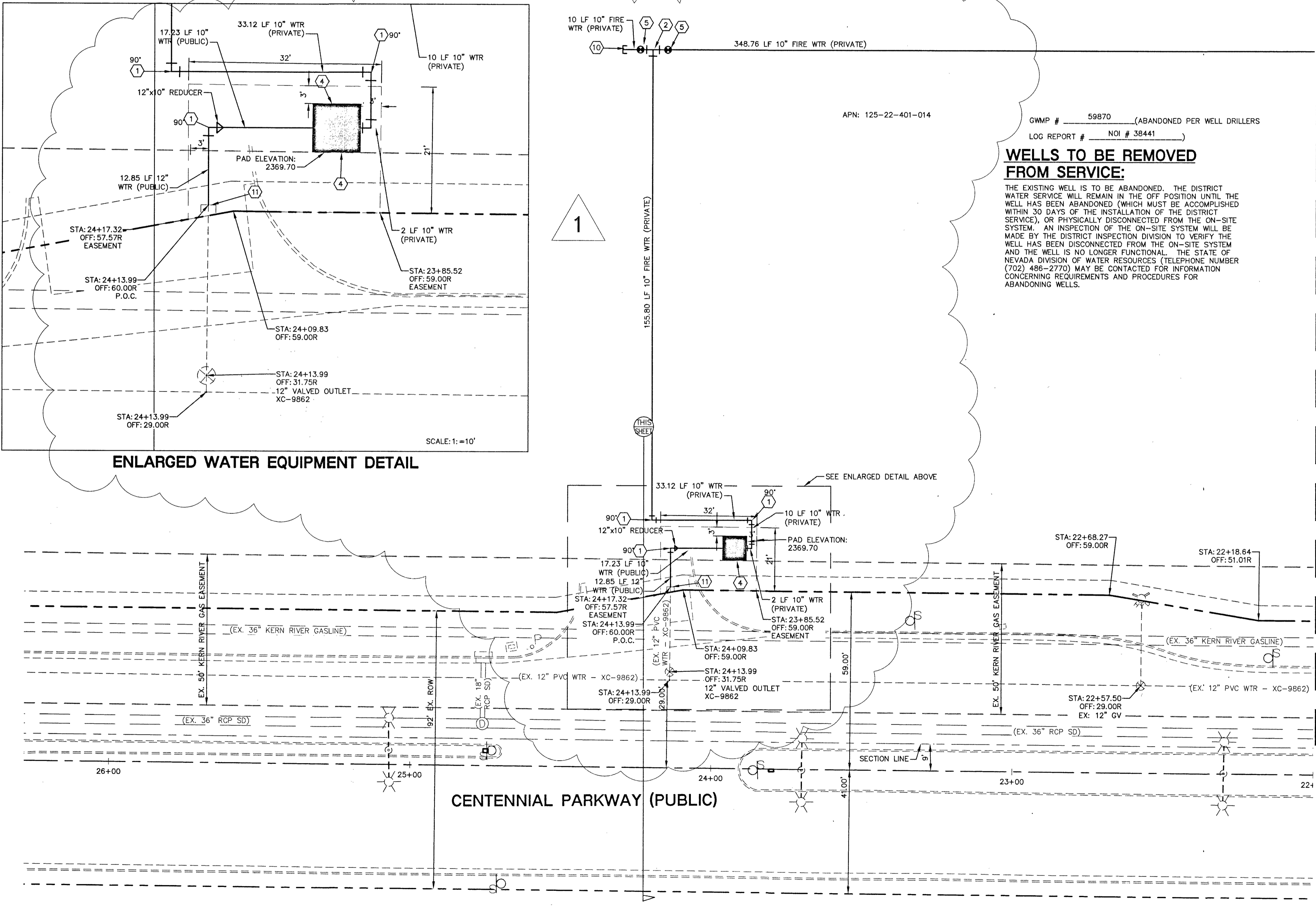
1-702-227-2929

1-702-432-5300

1-800-227-2800

WELLS TO BE REMOVED FROM SERVICE:

THE EXISTING WELL IS TO BE ABANDONED. THE DISTRICT WATER SERVICE WILL REMAIN IN THE OFF POSITION UNTIL THE WELL HAS BEEN ABANDONED (WHICH MUST BE ACCOMPLISHED WITHIN 30 DAYS OF THE INSTALLATION OF THE DISTRICT SERVICE), OR PHYSICALLY DISCONNECTED FROM THE ON-SITE SYSTEM. AN INSPECTION OF THE ON-SITE SYSTEM WILL BE MADE BY THE DISTRICT INSPECTION DIVISION TO VERIFY THE WELL HAS BEEN DISCONNECTED FROM THE ON-SITE SYSTEM AND THE WELL IS NO LONGER FUNCTIONAL. THE STATE OF NEVADA DIVISION OF WATER RESOURCES (TELEPHONE NUMBER (702) 498-2770) MAY BE CONTACTED FOR INFORMATION CONCERNING REQUIREMENTS AND PROCEDURES FOR ABANDONING WELLS.



ENLARGED WATER EQUIPMENT DETAIL SCALE: 1" = 10'

MATCH LINE - SEE SHEET C4.03

SHIRON DEVELOPMENT LLC
 4372 CHEVENE
 LAS VEGAS, NV 89032
 CONTACT: JAMES LIMERICK 702-251-0789

UTILITY PLANS
 SHEET 6 OF 6

PAXTON WALK
 CITY OF LAS VEGAS
 LAS VEGAS, NEVADA

C4.05
 SHEET 16 OF 22
 107V6425
 H# 57326

CL OR SURVEY LINE	EASEMENT LINE	DESCRIPTION:	CONTOUR LINE	EDGE OF PAVEMENT	*A* TYPE CURBS	L* TYPE CURBS	WALLS	FENCES	AC PAVEMENT	CONCRETE	SPOT ELEVATIONS	SIGNS	MANHOLE W/ DESCRIPTION	MANHOLE DESCRIPTIONS	FIRE HYDRANTS	GATE VALVES	REDUCERS	CLEAN OUTS	UTILITY BOX OR VAULT	BACKWATER VALVES	150w HPS STREETLIGHTS	200w HPS STREETLIGHTS	250w HPS STREETLIGHTS	
---	---	EXISTING: --- PROPOSED: ---	---	---	---	---	---	---	---	---	---	---	---	---	---	---	---	---	---	---	---	---	---	---

12/16/2015 2:27 PM
 S:\04013156\104\Drawings\Plan\Drawings\10-13104-100-117.dwg