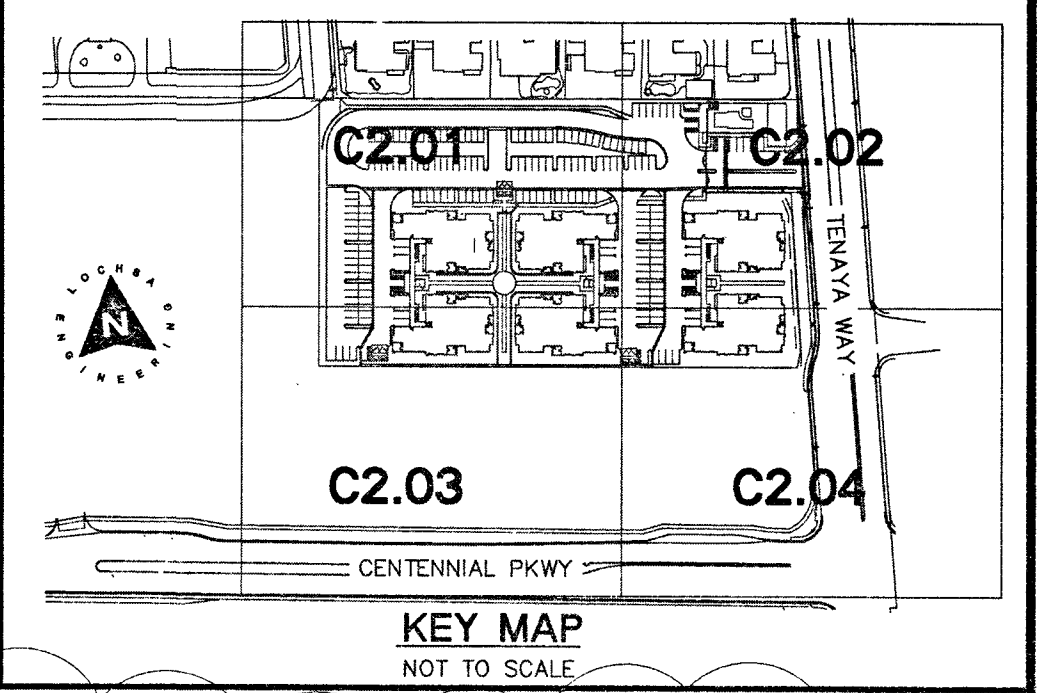
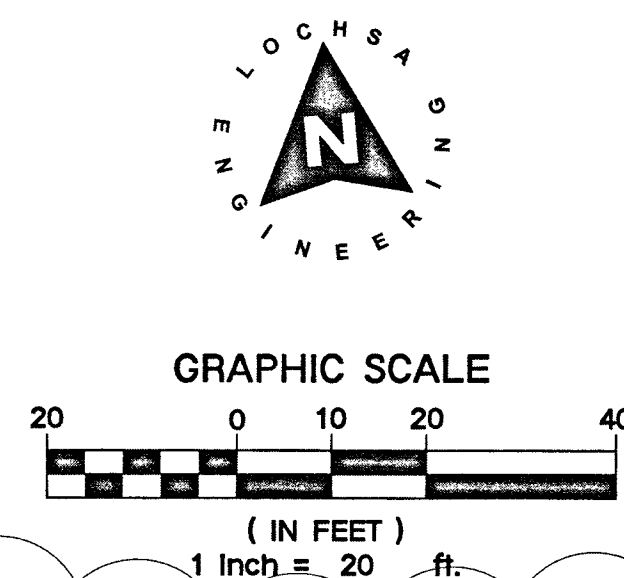
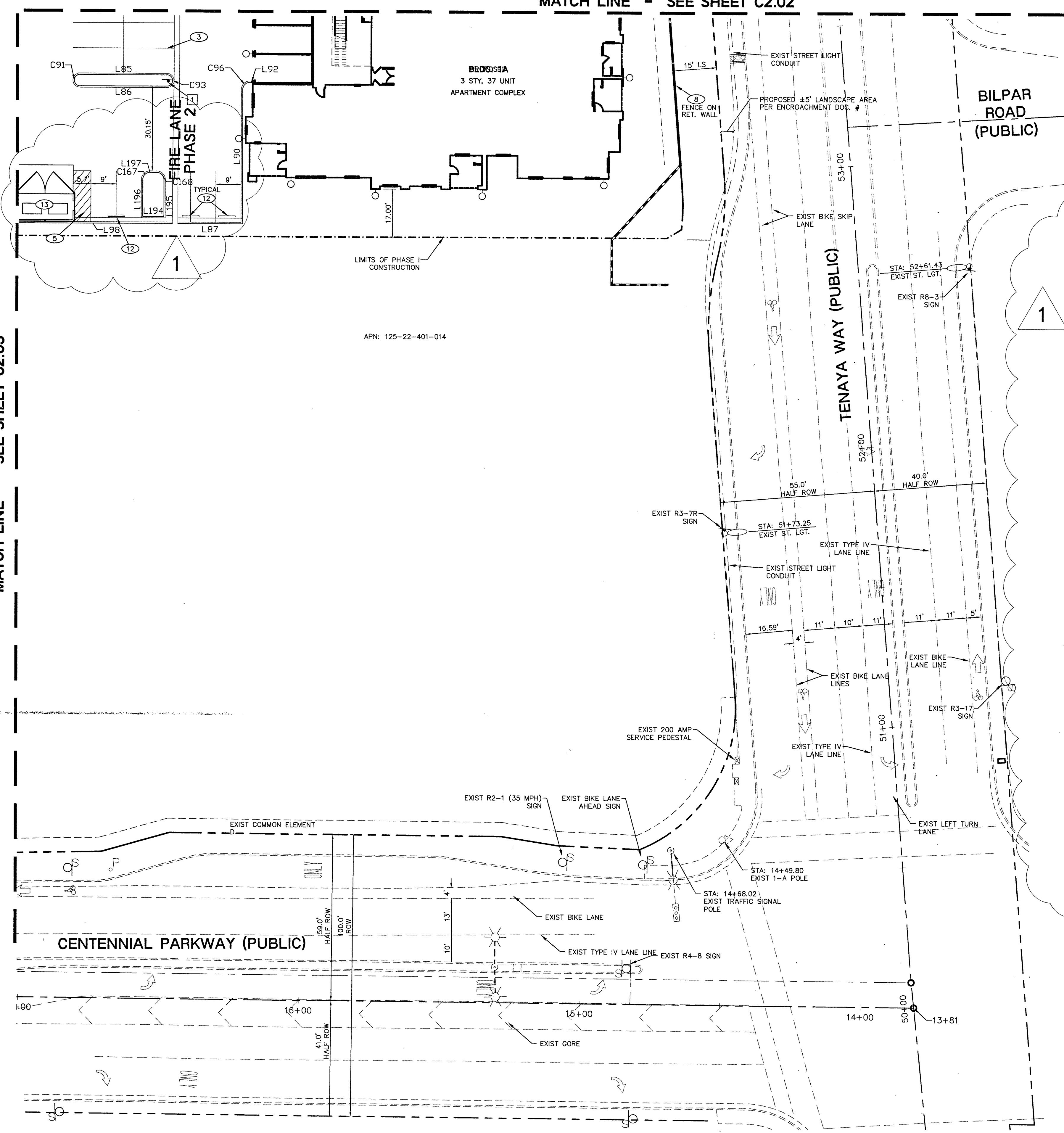


MATCH LINE - SEE SHEET C2.02



**CURVE TABLE**

CURVE #	LENGTH	RADIUS	DELTA	TANGENT
C1	24.68'	27.50'	051°25'42"	13.24'
C2	22.41'	15.00'	085°35'41"	13.89'
C3	41.22'	25.00'	094°27'42"	27.03'
C4	4.71'	1.50'	180°00'00"	INFINITY
C6	4.71'	1.50'	180°00'00"	INFINITY
C8	4.71'	1.50'	180°00'00"	INFINITY
C10	4.71'	1.50'	180°00'00"	INFINITY
C12	3.93'	2.50'	090°00'00"	2.50'
C13	37.31'	27.50'	077°44'16"	22.17'
C14	3.57'	2.00'	102°15'44"	2.48'
C15	7.07'	4.50'	090°00'00"	4.50'
C16	14.34'	9.50'	086°28'21"	8.93'
C17	39.83'	27.50'	082°59'18"	24.32'
C18	4.30'	2.50'	098°33'44"	2.90'
C20	58.77'	250.50'	013°26'34"	29.52'
C22	2.33'	1.50'	089°08'06"	1.48'
C23	2.01'	266.50'	000°25'57"	1.01'
C24	2.37'	1.50'	090°25'57"	1.51'
C26	54.69'	248.50'	012°36'38"	27.46'
C28	2.36'	1.50'	090°00'00"	1.50'

**CURVE TABLE**

CURVE #	LENGTH	RADIUS	DELTA	TANGENT
C30	2.36'	1.50'	090°00'00"	1.50'
C34	2.36'	1.50'	090°00'00"	1.50'
C36	2.36'	1.50'	090°00'00"	1.50'
C38	3.14'	2.00'	090°00'00"	2.00'
C40	3.14'	2.00'	090°00'00"	2.00'
C44	3.14'	2.00'	090°00'00"	2.00'
C46	3.14'	2.00'	090°00'00"	2.00'
C50	7.85'	2.50'	180°00'00"	INFINITY
C54	7.85'	2.50'	180°00'00"	INFINITY
C58	1.57'	1.00'	090°00'00"	1.00'
C60	82.47'	52.50'	090°00'00"	52.50'
C61	69.21'	291.50'	013°36'10"	34.77'
C62	19.08'	157.65'	006°55'59"	9.55'
C63	4.48'	27.50'	009°19'27"	2.24'
C64	18.50'	12.50'	084°47'45"	11.41'
C65	9.11'	27.50'	018°59'01"	4.60'
C67	1.11'	1.00'	103°48'52"	1.28'
C68	1.11'	27.50'	008°56'49"	2.15'
C70	2.36'	27.50'	008°54'57"	2.14'
C71	2.36'	1.00'	097°08'51"	1.13'

**CURVE TABLE**

CURVE #	LENGTH	RADIUS	DELTA	TANGENT
C73	11.48'	1.50'	024°00'56"	5.82'
C74	3.93'	2.50'	090°00'00"	2.50'
C75	6.28'	2.00'	180°00'00"	INFINITY
C77	6.28'	2.00'	180°00'00"	INFINITY
C79	6.28'	2.00'	180°00'00"	INFINITY
C81	6.28'	2.00'	180°00'00"	INFINITY
C83	3.93'	2.50'	090°00'00"	2.50'
C84	1.57'	1.00'	090°00'00"	1.00'
C85	1.57'	1.00'	090°00'00"	1.00'
C86	3.93'	2.50'	090°00'00"	2.50'
C87	3.93'	2.50'	090°00'00"	2.50'
C88	1.57'	1.00'	090°00'00"	1.00'
C89	1.57'	1.00'	090°00'00"	1.00'
C90	3.93'	2.50'	090°00'00"	2.50'
C91	6.28'	2.00'	180°00'00"	INFINITY
C93	6.28'	2.00'	180°00'00"	INFINITY
C96	3.93'	2.50'	090°00'00"	2.50'
C97	3.93'	2.50'	090°00'00"	2.50'
C98	5.78'	4.00'	082°49'09"	3.53'
C100	3.93'	2.50'	090°00'00"	2.50'

**CURVE TABLE**

CURVE #	LENGTH	RADIUS	DELTA	TANGENT
C101	13.77'	27.50'	028°40'54"	7.03'
C102	3.14'	2.00'	090°00'00"	2.00'
C103	3.14'	2.00'	090°00'00"	2.00'
C104	1.57'	1.00'	089°42'55"	1.00'
C105	23.36'	27.50'	048°40'14"	12.44'
C106	4.71'	3.00'	090°00'00"	3.00'
C107	3.14'	2.00'	090°00'00"	2.00'
C108	3.14'	2.00'	090°00'00"	2.00'
C109	3.21'	2.00'	091°57'05"	2.07'
C110	42.26'	27.50'	088°02'55"	26.58'
C112	4.71'	3.00'	090°00'00"	3.00'
C113	3.14'	2.00'	090°00'00"	2.00'
C117	3.14'	2.00'	090°00'00"	2.00'
C119	3.14'	2.00'	090°00'00"	2.00'
C123	4.40'	2.50'	100°48'13"	3.02'
C124	76.02'	27.50'	158°23'35"	144.11'
C125	4.14'	2.52'	094°08'55"	2.71'
C129	2.36'	1.50'	090°00'00"	1.50'
C131	2.36'	1.50'	090°00'00"	1.50'
C135	2.36'	1.50'	090°00'00"	1.50'

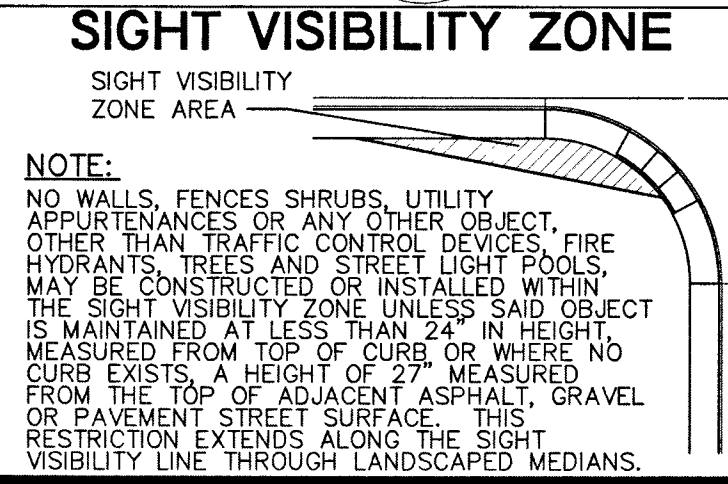
**CURVE TABLE**

CURVE #	LENGTH	RADIUS	DELTA	TANGENT
C137	2.36'	1.50'	090°00'00"	1.50'
C139	3.14'	2.00'	090°00'00"	2.00'
C141	1.70'	1.00'	097°08'51"	1.13'
C142	43.36'	27.50'	090°20'50"	27.67'
C143	6.48'	4.50'	082°30'19"	3.95'
C144	3.14'	2.00'	090°00'00"	2.00'
C145	6.28'	2.00'	180°00'00"	INFINITY
C147	6.28'	2.00'	180°00'00"	INFINITY
C149	6.28'	2.00'	180°00'00"	INFINITY
C151	6.28'	2.00'	180°00'00"	INFINITY
C153	3.93'	2.50'	090°00'00"	2.50'
C154	1.57'	1.00'	090°00'00"	1.00'
C155	1.57'	1.00'	090°00'00"	1.00'
C156	3.93'	2.50'	090°00'00"	2.50'
C157	3.93'	2.50'	090°00'00"	2.50'
C158	5.78'	4.00'	082°49'09"	3.53'
C159	8.07'	4.50'	102°48'26"	5.64'
C160	6.28'	2.00'	180°00'00"	INFINITY
C162	6.28'	2.00'	180°00'00"	INFINITY
C164	3.93'	2.50'	090°00'00"	2.50'

**CURVE TABLE**

CURVE #	LENGTH	RADIUS	DELTA	TANGENT
C165	3.93'	2.50'	090°00'00"	2.50'
C166	3.93'	2.50'	077°11'34"	2.00'
C167	3.93'	2.50'	090°00'00"	2.50'
C168	3.93'	2.50'	090°00'00"	2.50'

- STRIPING NOTES:**
- INSTALL 36" R1-1 STOP SIGN.
  - INSTALL 30" R1-1 STOP SIGN.
  - INSTALL 9' X 18' PARKING WITH 4" WHITE PAINTED LINES. (TYPICAL)
  - INSTALL BLUE AND WHITE PAINTED HANDICAP PAYMENT MARKINGS PER DETAIL 5 ON C6.01
  - INSTALL 4" WHITE PAINTED HATCH LINES 3' O.C. @ 45°.
  - INSTALL R7-8 "MINIMUM \$250 FINE FOR USE BY OTHERS" NRS 484.408 SIGN (12" X 18") PER DETAIL 6 ON C6.01
  - INSTALL R7-8 "MINIMUM \$250 FINE FOR USE BY OTHERS" NRS 484.408 SIGN "VAN ACCESSIBLE" (12" X 18") PER DETAIL 8 ON C6.01
  - GATE AND FENCING BY OTHERS.
  - REMOVE EXIST STREETLIGHT FOUNDATION AND RELOCATE EXIST STREETLIGHT STANDARD WITH R2-1 (35 MPH) SIGN. INTERCEPT EXIST CONDUIT AND INSTALL EXIST STREETLIGHT FOUNDATION PER CCAUSD 320 & 321. RE-PULL CONDUCTORS
  - INTERCEPT EXIST STREETLIGHT CONDUIT. INSTALL LED LUMINAIRE ON STREETLIGHT STANDARD PER CCAUSD 314 AND STREETLIGHT FOUNDATION PER CCAUSD 320 & 321. RE-PULL CONDUCTORS OR INSTALL NEW IF NEEDED.
  - INSTALL 8' X 18' COMPACT PARKING WITH 4" WHITE PAINTED LINES.
  - INSTALL PARKING BUMPER OR CURB PER DETAIL 7 ON C6.01
  - TRASH ENCLOSURE PER ARCHITECTURAL PLANS.



- FIRE ACCESS NOTES/ LEGEND:**
- INSTALL FIRE LANE SIGN AT A MAXIMUM DISTANCE OF EVERY 100' ALONG THE FIRE LANE PER FIRE LANE DETAIL SHEET C2.01
  - INSTALL FIRE LANE ENTRANCE WARNING SIGN PER DETAIL ON SHEET C2.01
- NOTE:** CURB SHALL BE PAINTED ADJACENT TO DESIGNATED FIRE TRUCK ROUTE
- 24' WIDE FIRE TRUCK ACCESSIBLE ROUTE TURNING RADIUS OF 28' & 52' MIN.

**CITY OF LAS VEGAS FIRE DEPARTMENT APPROVAL**

BY: *[Signature]* DATE: 12/15/15

APPROVAL OF THESE PLANS SHALL NOT BE CONSTRUED TO BE A PERMIT FOR, OR AN APPROVAL OF, ANY VIOLATION OF ANY OF THE PROVISIONS OF THE STATE OR COUNTY LAWS. FIRE FLOW 3250 GPM AT 20 P.S.I. RESIDUAL.

**A.P.N.:**  
 125-22-401-014

**BASIS OF BEARINGS:**  
 SOUTH 84°08'56" EAST, BEING THE BEARING OF THE SOUTH LINE OF THE SOUTHWEST QUARTER (SW 1/4) OF SECTION 22, TOWNSHIP 19 SOUTH, RANGE 60 EAST, M.D.M., CLARK COUNTY, NEVADA AS SHOWN IN FILE 89 OF SURVEY MAPS, PAGE 3, OFFICIAL RECORDS OF CLARK COUNTY, NEVADA.

**BENCHMARK:**  
 CITY OF LAS VEGAS BENCHMARK NO. BLV80 2204 BEING A RIVET AND PLATE IN TOP OF CURB @ NORTHEAST CORNER OF BUFFALO DRIVE AND DEER SPRINGS, NAVD 88 ELEVATION = 728.504 METERS (ELEVATION = 2390.10 FEET (NAVD 88 DATUM))

**NOTE:**  
 LOCHSA ENGINEERING ASSUMES NO RESPONSIBILITY FOR EXISTING UTILITY LOCATIONS AND ELEVATIONS. THE UTILITIES SHOWN ON THIS PLAN ARE FROM THE BEST AVAILABLE INFORMATION. IT IS THE CONTRACTOR'S RESPONSIBILITY TO FIELD VERIFY THE LOCATION AND ELEVATION OF ALL UTILITIES, INCLUDING BUT NOT LIMITED TO, THE WATER, FIRE, SANITARY SEWER, STORM SEWER, TELEPHONE, POWER, GAS, AND IRRIGATION LINES PRIOR TO THE COMMENCEMENT OF CONSTRUCTION. IF CONFLICT EXISTS IN THE FIELD, THE CONTRACTOR IS TO NOTIFY THE PROJECT ARCHITECT, OWNER'S REPRESENTATIVE AND THE PROJECT ENGINEER IMMEDIATELY.

**SAFETY ALERT**

Call before you dig  
 Avoid cutting underground utility lines. It's costly.

Call before you dig  
 Avoid cutting underground utility lines. It's costly.

MATCH LINE - SEE SHEET C2.03

12/16/2015 2:24 PM  
 T:\CAD\31064\31064.dwg  
 12/16/2015 2:24 PM

**SHIRON DEVELOPMENT LLC**  
 4324 CHEVENE  
 LAS VEGAS, NV 89032  
 CONTACT: JAMES LIMERICK 702-251-0789

**Lochsa Engineering**  
 1516 South Jones Blvd.  
 Suite 100  
 Las Vegas, NV 89118  
 Phone (702) 366-8932  
 Fax (702) 366-8937  
 www.lochsa.com

**HORIZONTAL CONTROL PLANS SHEET 4 OF 4**

**PAXTON WALK CITY OF LAS VEGAS LAS VEGAS, NEVADA**

PROJECT No.: 131054  
 DATE: 11/19/2015  
 SCALE: 1"=20'  
 DRAWN BY: JNC  
 DESIGNED BY: JNC  
 CHECKED BY: GMM

11/19/2015  
 SHEET No. C2.04  
 SHEET 6 OF 22  
 107V 64 25  
 H# 57526