

JWZUNINO
LANDSCAPE ARCHITECTURE
LAS VEGAS
3191 S. JONES BLVD
LAS VEGAS, NV 89146
T 702.253.9390
F 702.253.1018
CARLSBAD
2248 FARADAY AVE
CARLSBAD, CA 92008
JWZ 14533.00 DRAWN BY: JHS
DATE: 04-30-15 CHECKED BY: CA



PAXTON WALK

Project Number:
14533.00

Date:
04-30-15

Drawn By:
JHS

Checked By:
CML

Scale:
NTS

Revisions:

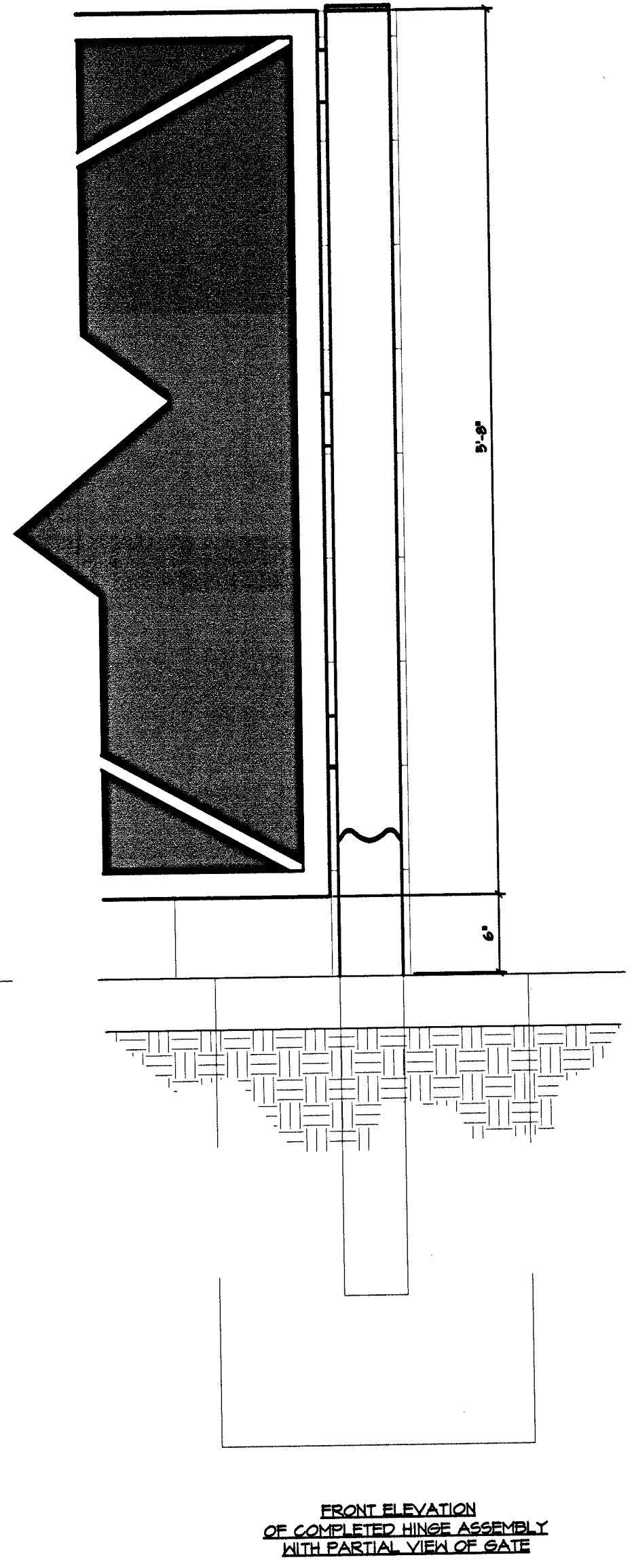
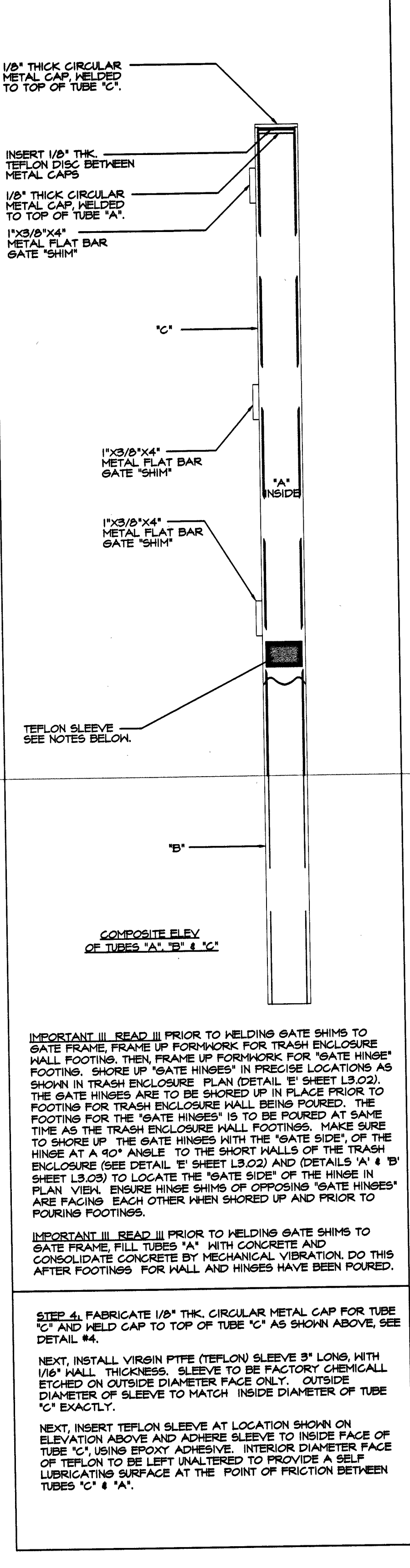
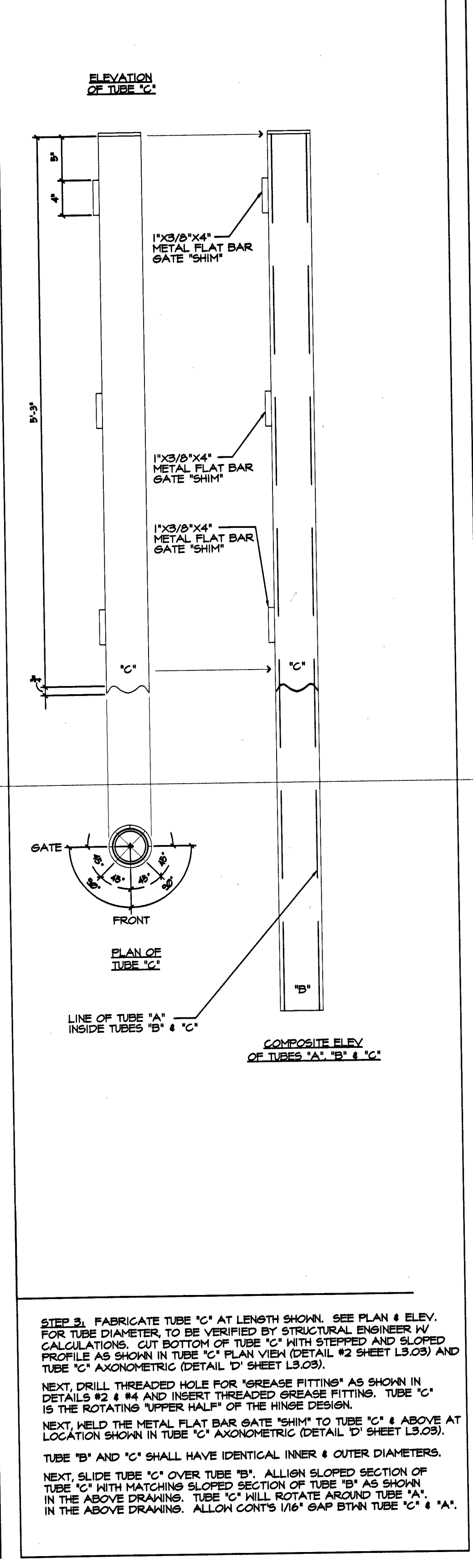
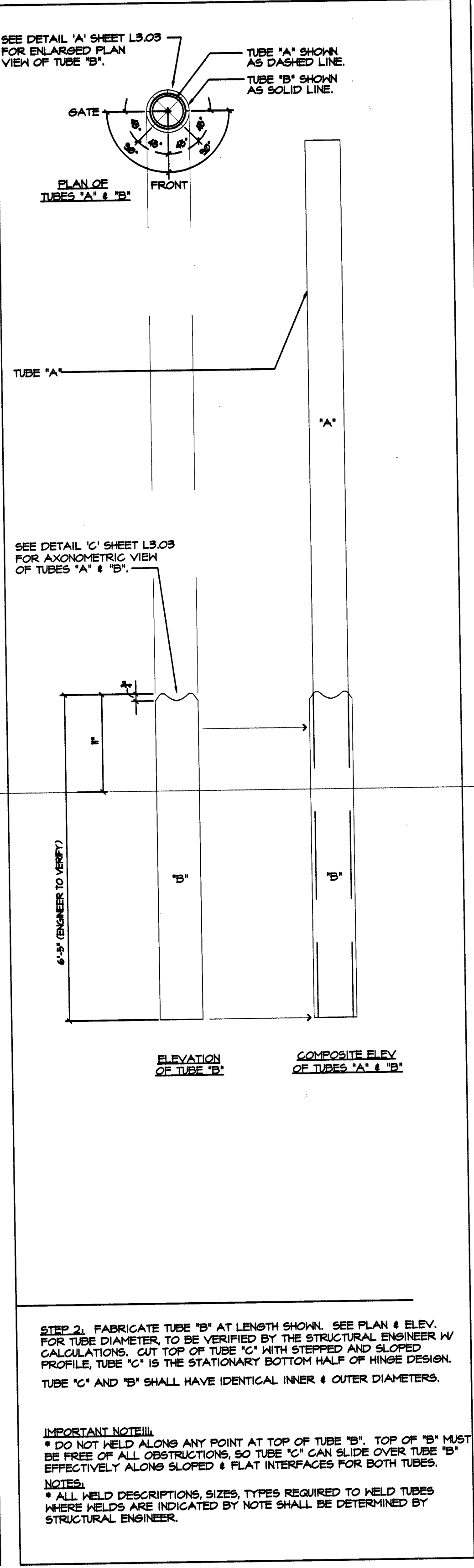
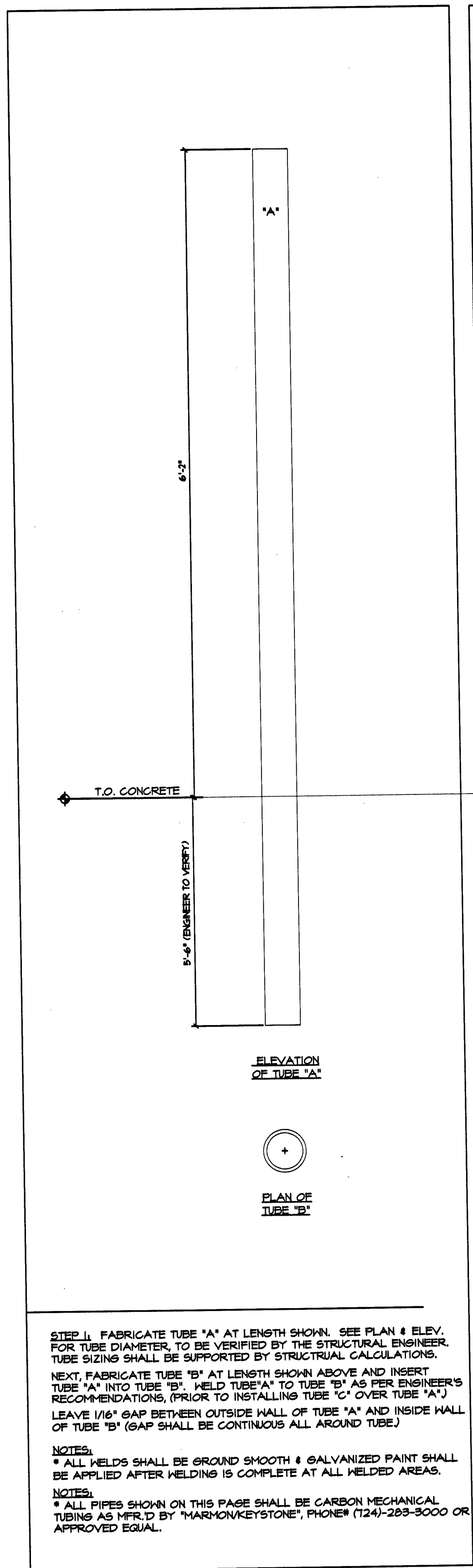
- ▲
- ▲
- ▲

THIS DOCUMENT AND THE IDEAS AND DESIGNS INCORPORATED HEREIN, AS AN INSTRUMENT OF PROFESSIONAL SERVICE, IS THE PROPERTY OF JWZUNINO LANDSCAPE ARCHITECTURE AND IS NOT TO BE USED, IN WHOLE OR IN PART, FOR ANY OTHER PROJECT WITHOUT THE WRITTEN PERMISSION OF JWZUNINO & ASSOCIATES INC.

Sheet Title:
LANDSCAPE DETAILS

Sheet Number:

>> F 04 >>
L304
H# 575x6 28
107V6A25



IMPORTANT!!! READ!!! PRIOR TO WELDING GATE SHIMS TO GATE FRAME FILL TUBES 'A' WITH CONCRETE AND CONSOLIDATE CONCRETE BY MECHANICAL VIBRATION. DO THIS AFTER FOOTINGS FOR WALL AND HINGES HAVE BEEN POURED.

STEP 4. FABRICATE 1/8" THK. CIRCULAR METAL CAP FOR TUBE 'C' AND WELD CAP TO TOP OF TUBE 'C' AS SHOWN ABOVE, SEE DETAIL #4.

IMPORTANT!!! READ!!! THE STRUCTURAL ENGINEER IS RESPONSIBLE FOR FOOTING DESIGN AND STEEL REINFORCEMENT.

"GATE HINGE" COMPLETE ASSEMBLY

1/8" THK CIRCULAR METAL CAP WELDED TO TOP OF TUBE 'C'.

INSERT 1/8" THK. TEFLON DISC BETWEEN METAL CAPS.

1/8" THK CIRCULAR METAL CAP WELDED TO TOP OF TUBE 'A'.

1"x3/8"x4" METAL FLAT BAR GATE SHIM.

1"x3/8"x4" METAL FLAT BAR GATE SHIM.

1"x3/8"x4" METAL FLAT BAR GATE SHIM.

1"x3/8"x4" METAL FLAT BAR GATE SHIM.

TEFLON SLEEVE SEE NOTES BELOW.

COMPOSITE ELEVATION OF TUBES 'A', 'B' & 'C'.

IMPORTANT!!! READ!!! PRIOR TO WELDING GATE SHIMS TO GATE FRAME, FRAME UP FORMWORK FOR TRASH ENCLOSURE WALL FOOTING. THEN, FRAME UP FORMWORK FOR 'GATE HINGE' FOOTING. SHORE UP 'GATE HINGE' IN PRECISE LOCATIONS AS SHOWN IN TRASH ENCLOSURE PLAN (DETAIL 'E' SHEET L3.02). THE GATE HINGE ARE TO BE SHORED UP IN PLACE PRIOR TO FOOTING FOR TRASH ENCLOSURE WALL BEING POURED. THE FOOTING FOR THE 'GATE HINGE' IS TO BE POURED AT SAME TIME AS THE TRASH ENCLOSURE WALL FOOTINGS. MAKE SURE TO SHORE UP THE GATE HINGE WITH THE 'GATE SIDE' OF THE HINGE AT A 40° ANGLE TO THE SHORT WALLS OF THE TRASH ENCLOSURE (SEE DETAIL 'E' SHEET L3.02) AND (DETAILS 'A' & 'B' SHEET L3.03) TO LOCATE THE 'GATE SIDE' OF THE HINGE IN PLAN VIEW. ENSURE HINGE SHIMS OF OPPOSING 'GATE HINGE' ARE FACING EACH OTHER WHEN SHORED UP AND PRIOR TO POURING FOOTINGS.

IMPORTANT!!! READ!!! PRIOR TO WELDING GATE SHIMS TO GATE FRAME FILL TUBES 'A' WITH CONCRETE AND CONSOLIDATE CONCRETE BY MECHANICAL VIBRATION. DO THIS AFTER FOOTINGS FOR WALL AND HINGES HAVE BEEN POURED.

STEP 4. FABRICATE 1/8" THK. CIRCULAR METAL CAP FOR TUBE 'C' AND WELD CAP TO TOP OF TUBE 'C' AS SHOWN ABOVE, SEE DETAIL #4.

NEXT, INSTALL VIRGIN PTFE (TEFLON) SLEEVE 3' LONG, WITH 1/16" WALL THICKNESS. SLEEVE TO BE FACTORY CHEMICALLY ETCHED ON OUTSIDE DIAMETER FACE ONLY. OUTSIDE DIAMETER OF SLEEVE TO MATCH INSIDE DIAMETER OF TUBE 'C' EXACTLY.

NEXT, INSERT TEFLON SLEEVE AT LOCATION SHOWN ON ELEVATION ABOVE AND ADHERE SLEEVE TO INSIDE FACE OF TUBE 'C' USING EPOXY ADHESIVE. INTERIOR DIAMETER FACE OF TEFLON TO BE LEFT UNALTERED TO PROVIDE A SELF-LUBRICATING SURFACE AT THE POINT OF FRICTION BETWEEN TUBES 'C' & 'A'.

NEXT, SLIDE TUBE 'C' OVER TUBE 'B'. ALIGN SLOPED SECTION OF TUBE 'C' WITH MATCHING SLOPED SECTION OF TUBE 'B' AS SHOWN IN THE ABOVE DRAWING. TUBE 'C' WILL ROTATE AROUND TUBE 'A'. IN THE ABOVE DRAWING. ALLOW CONT'S 1/16" GAP BTWN TUBE 'C' & 'A'.