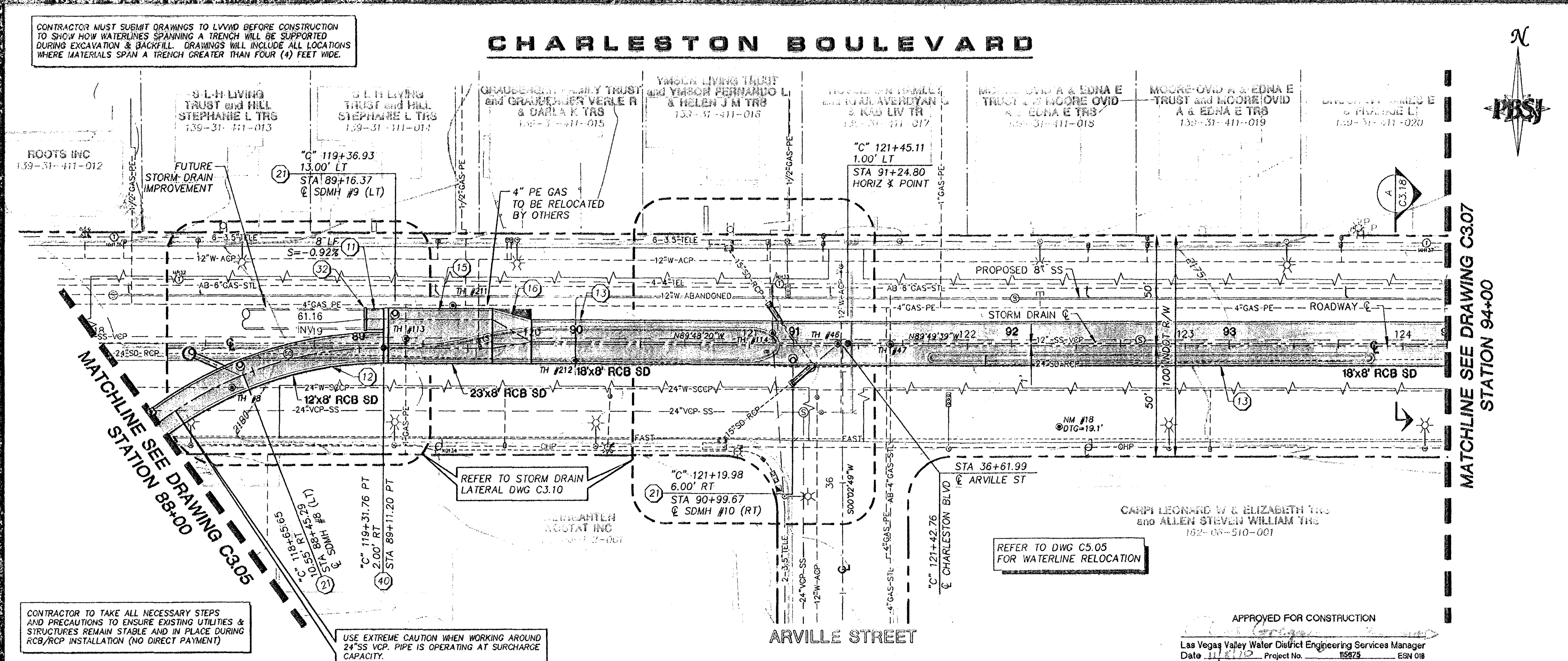
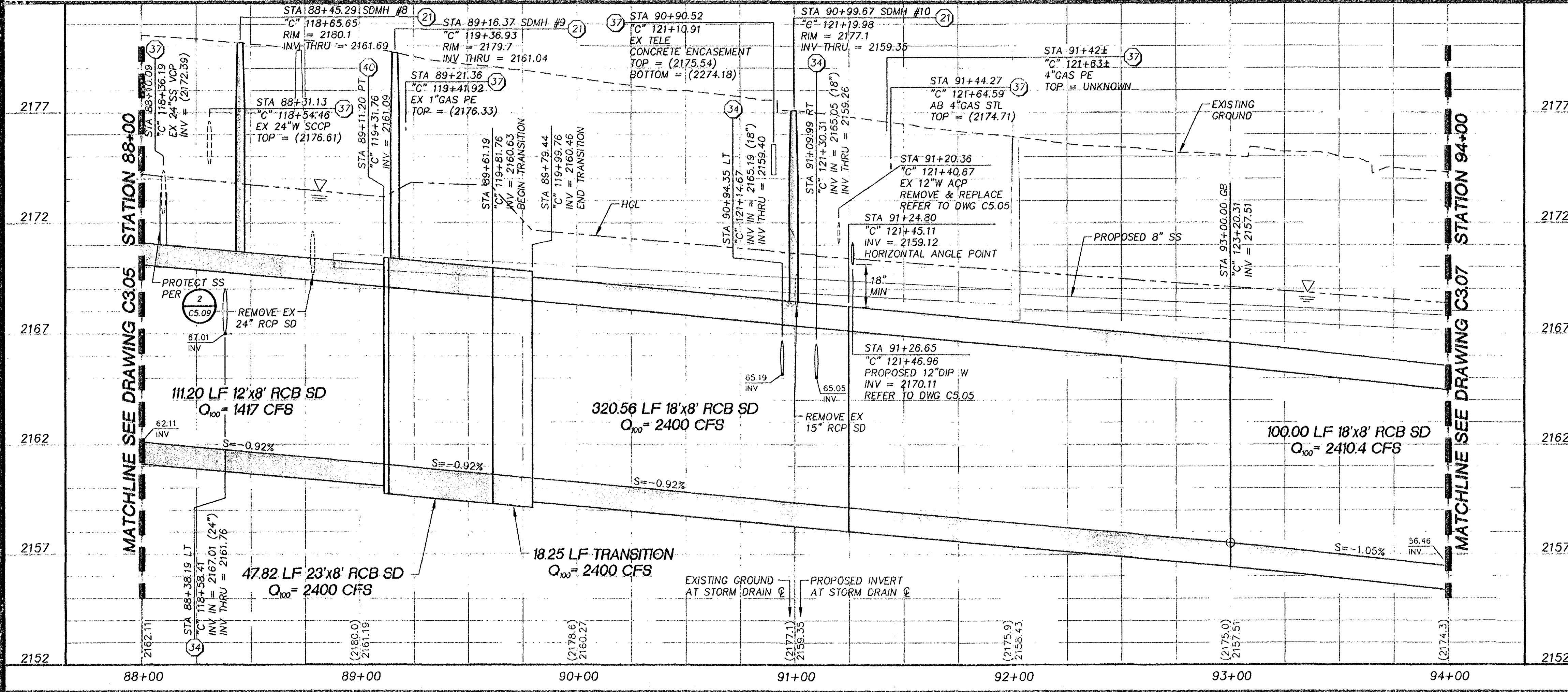


CHARLESTON BOULEVARD



- KEY NOTES**
- INSTALL 18" RCP SD PER TRENCH DETAIL 1 DRAWING C3.15
 - INSTALL 24" RCP SD PER TRENCH DETAIL 1 DRAWING C3.15
 - NOT USED
 - INSTALL 36" RCP SD PER TRENCH DETAIL 1 DRAWING C3.15
 - NOT USED
 - NOT USED
 - INSTALL 29"x45" HE RCP SD PER TRENCH DETAIL 1 DRAWING C3.15
 - INSTALL 38"x60" HE RCP SD PER TRENCH DETAIL 1 DRAWING C3.15
 - NOT USED
 - INSTALL 72" RCB SD PER DRAWING C4.03 AND PER TRENCH DETAIL 1 DRAWING C3.15
 - INSTALL 84" RCB SD PER DRAWING C4.03 AND PER TRENCH DETAIL 1 DRAWING C3.15
 - INSTALL 12"x9" RCB SD PER DRAWING C4.03 AND PER TRENCH DETAIL 1 DRAWING C3.15
 - INSTALL 18"x9" RCB SD PER DRAWING C4.03 AND PER TRENCH DETAIL 1 DRAWING C3.15
 - INSTALL 23"x9" RCB SD PER DRAWING C4.03 AND PER TRENCH DETAIL 1 DRAWING C3.15
 - CONSTRUCT RCB TRANSITION PER DETAIL 3 DRAWING C4.01
 - CONSTRUCT TYPE 1 (60") MANHOLE PER USD #403A
 - NOT USED
 - NOT USED
 - CONSTRUCT 36" ACCESS MANHOLE W/ STEPS PER DETAIL 3 DRAWING C3.16
 - CONSTRUCT 48" ACCESS MANHOLE W/ STEPS PER DETAIL 4 DRAWING C3.16
 - CONSTRUCT 48" ACCESS MANHOLE W/ STEPS & GRATED LID PER DETAIL 5 DRAWING C3.16
 - CONSTRUCT JUNCTION STRUCTURE #1 PER DRAWING C4.07
 - CONSTRUCT 10"x8" ACCESS STRUCTURE PER DRAWING C4.04
 - NOT USED
 - NOT USED
 - CONSTRUCT TYPE "D" MODIFIED DROP INLET PER USD #412A
 - INSTALL 2"x2" AREA INLET PER DETAIL 2 DRAWING C3.18
 - NOT USED
 - INSTALL TEMPORARY CLOSURE WALL PER DRAWING C4.10
 - REMOVE AND SALVAGE EXISTING TEMPORARY CLOSURE WALL PER DETAIL 2 DRAWING C3.17
 - INSTALL SALVAGED TEMPORARY CLOSURE WALL PER DRAWING C4.11
 - INSTALL CONCRETE COLLAR PER DETAIL 1 DRAWING C3.16
 - PIPE PENETRATION PER DETAIL 2 DRAWING C4.02
 - CONNECT TO EXISTING DROP INLET PER DETAIL 1 DRAWING C4.02
 - PIPE PENETRATION PER DETAIL 1 DRAWING C4.02 (SIMILAR)
 - PROTECT-IN-PLACE. CONTRACTOR TO SUPPORT UTILITY ACROSS THE TRENCH. ANY DESIGN REQUIRED TO SUPPORT THE UTILITY SHALL BE DONE BY THE CONTRACTOR'S ENGINEER AND SHALL BE LICENSED IN THE STATE OF NEVADA (NO DIRECT PAYMENT)
 - PROTECT-IN-PLACE
 - PLUG STORM DRAIN PER DETAIL 5 DRAWING C3.17
 - CONSTRUCT CLOSURE WALL #1 PER DRAWING C4.06
 - INSTALL TEMPORARY CLOSURE WALL PER DRAWING C4.12



Call before you Dig
811
1-800-227-2600

FAST
Call before you UnderGround
1-702-432-5300

CALL BEFORE YOU DIG
1-702-227-2929

GRAPHIC SCALE
(IN FEET)
HORIZ 1 inch = 30 ft.
VERTICAL 1 inch = 3 ft.

CAUTION:
EXISTING UTILITIES ARE LOCATED ON THE PLANS FROM A SEARCH OF AVAILABLE RECORDS. CONTRACTOR TO VERIFY LOCATIONS AND DEPTHS PRIOR TO CONSTRUCTION.

SHEET INDEX

PBS&J
an Atkins company
2270 Corporate Circle Drive
Suite 100
Henderson, Nevada 89074
Telephone: 702/263-7275
Fax: 702/263-7200

**DEPARTMENT OF PUBLIC WORKS
ENGINEERING DESIGN SECTION**

CITY ENGINEER: CHERI EDELMAN, P.E.
CITY PROJECT ENGINEER: MICHAEL STURDIVANT, P.E.
DESIGN BY: ANGELO SPATA, P.E.
PROJECT MANAGER: SMI
CHECK BY: AAS
DRAWN BY: RW
DATE: OCTOBER 2010

**STORM DRAIN PLANS
PLAN AND PROFILE**

FILE: OAKLEY/MEADOWS STORM DRAIN
PHASE 2A - FAIR CENTER MALL TO
CHARLESTON BOULEVARD AT HINSON STREET

SHEET: STA 88+00.00 TO STA 94+00.00

PROFESSIONAL ENGINEER-STATE OF NEVADA

ANGELO A. SPATA
Exp. 08-30-12
CIVIL
No. 15753

SHEET: **C3.06**
35 of 73
DRAWING: 327v284-2

x:\Transportation Design\Projects\511566\PHASE 2A Sheets\1566-Ph2-C3.06 11-01-10 10:10am