

REDUCED PRESSURE PRINCIPLE ASSEMBLY (1) 1'

APPROVED REDUCED PRESSURE PRINCIPLE ASSEMBLY(S) SHALL BE INSTALLED PER THE UDACS PLATE NO. 11A. NO WATER SHALL BE TAKEN FROM A SERVICE REQUIRING BACKFLOW PREVENTION UNTIL THE REDUCED PRESSURE PRINCIPLE ASSEMBLY HAS BEEN SUCCESSFULLY TESTED BY THE LVWD.

ANY BLOCK WALL OR OTHER FENCE MATERIAL SHALL BE DESIGNED AND CONSTRUCTED AROUND THE OUTSIDE OF THE EASEMENT(S) TO ALLOW THE DISTRICT DIRECT ACCESS FROM THE ADJACENT RIGHT-OF-WAY.

EASEMENTS SHALL BE CLEARLY MARKED OR STAKED PRIOR TO THE START OF CONSTRUCTION.

LOTS: 191, 192, 193 AND 1" R/W, L&P

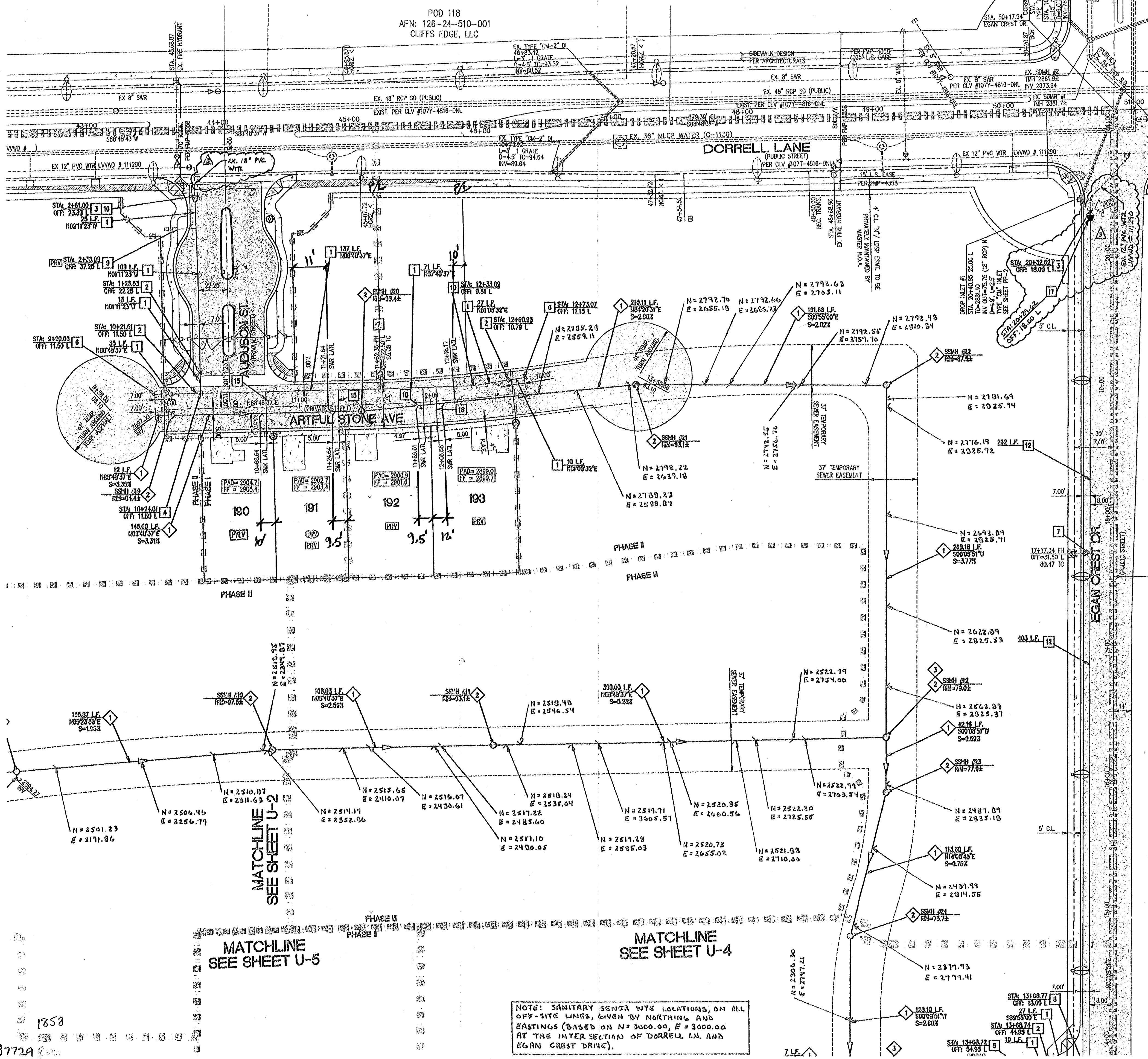
THIS PROPERTY MAY HAVE STATIC WATER PRESSURE IN EXCESS OF 80 PSI. THE UNIFORM PLUMBING CODE REQUIRES THAT INDIVIDUAL, ON-SITE (PRIVATE), PRESSURE REDUCING VALVES BE INSTALLED WHENEVER THE PRESSURE EXCEEDS 80 PSI. PRIVATE'S ARE THE DEVELOPER'S RESPONSIBILITY, AND WILL NOT BE INSPECTED OR INCLUDED IN THE ACCEPTANCE OF LVWD FACILITIES.

NOTE

THE SUBJECT PROJECT CANNOT BE APPROVED UNTIL CONTRACT C-1129, 3000 ZONE NORTH INTERIM TANK, CONTRACT C-1128, 3000 TEMPORARY PUMPING STATION AND CLIFFS EDGE, DORRELL WATER LINE (H11290) ARE ALL OPERATIONAL.

POD 118
APN: 126-24-510-001
CLIFFS EDGE, LLC

POD 121
APN: 126-24-510-002
DANVILLE LAND INVESTMENTS
10 U.S. CASE
PER TWP-4358



Call before you UnderGround
1-702-455-7511
1-702-229-6611

CALL BEFORE YOU DO OVERHEAD
1-702-227-2929

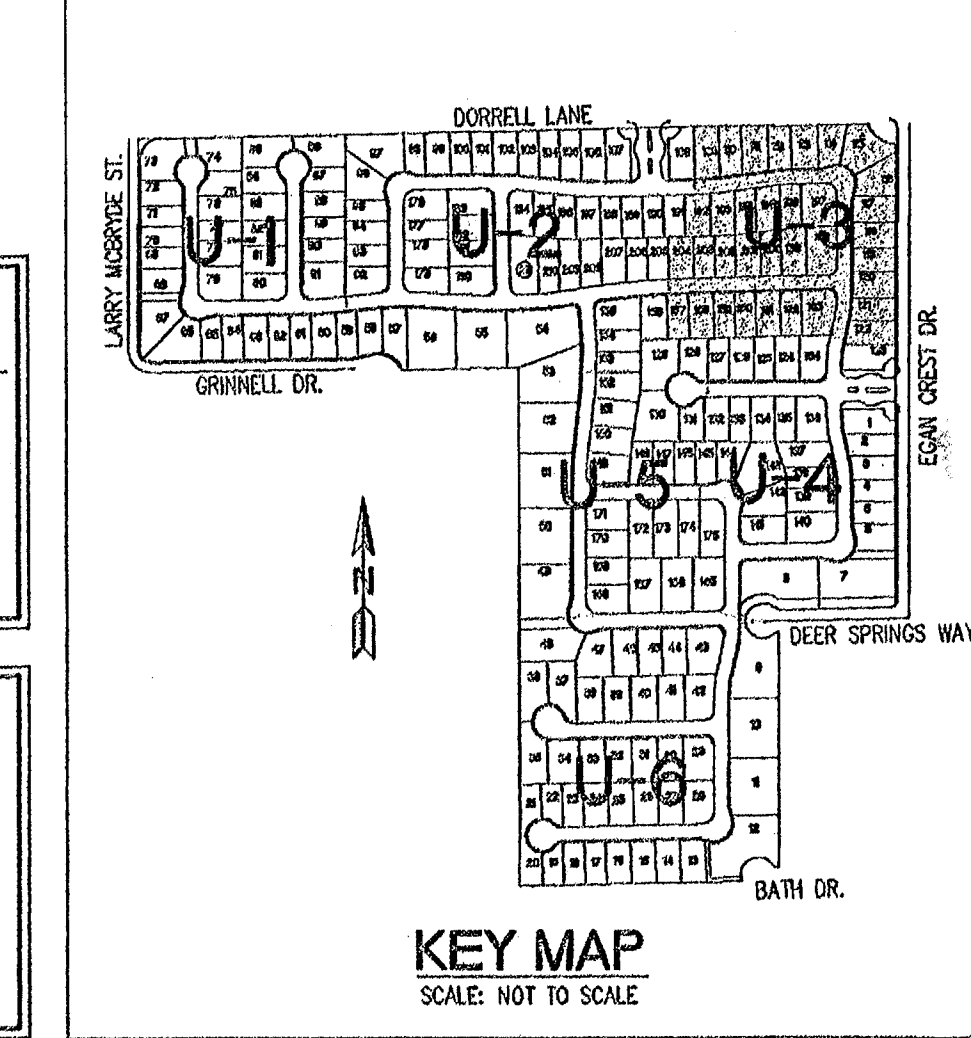
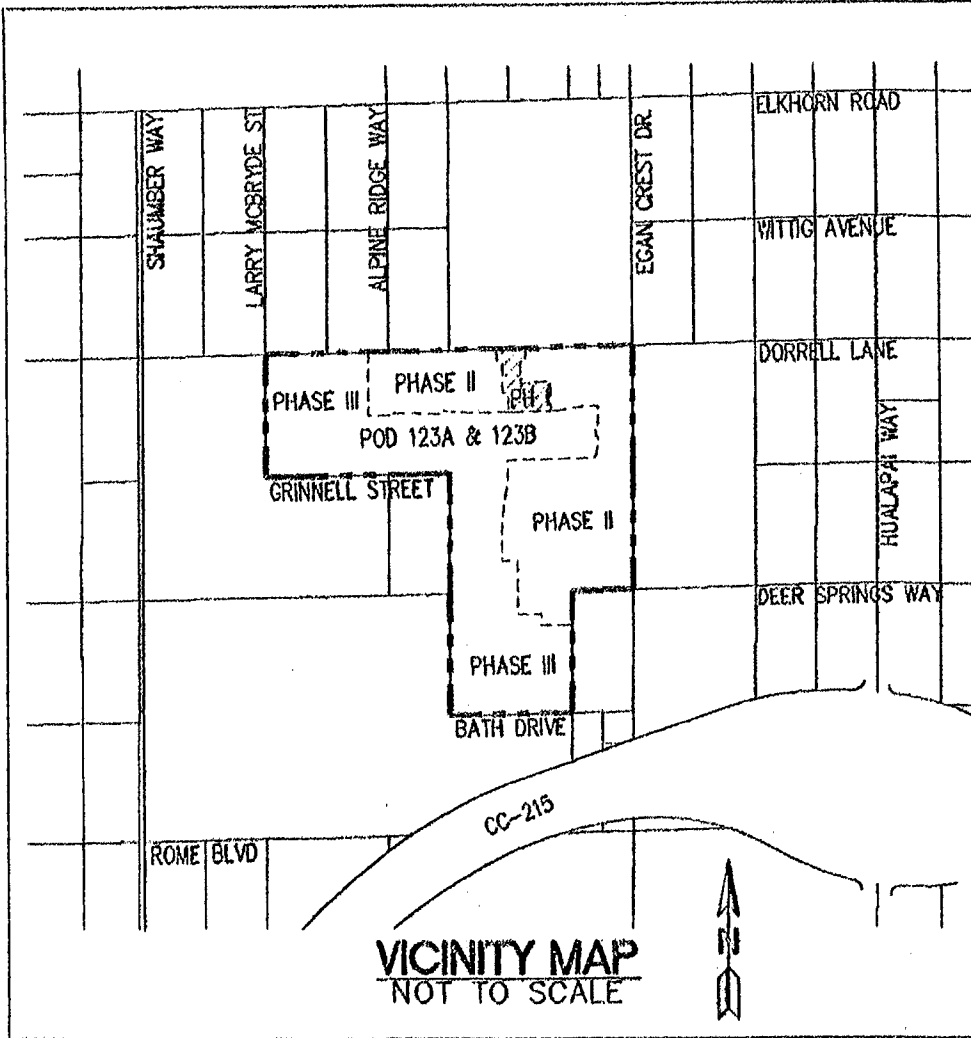
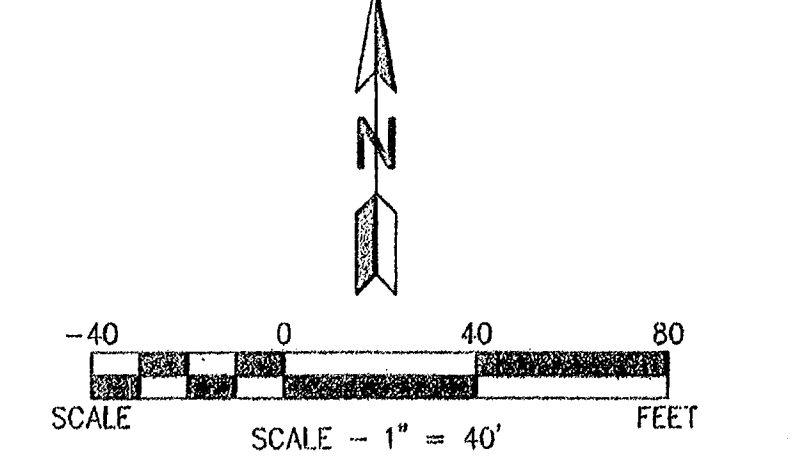
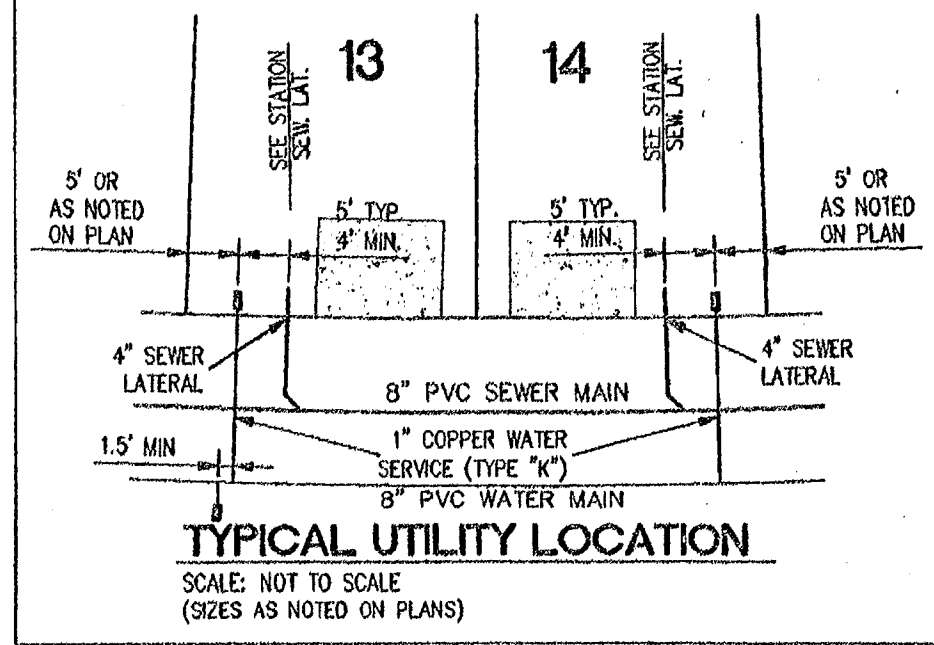
Call before you Dig
1-800-227-2600
UNDERGROUND SERVICE (USA)

LEGEND

[Symbol]	LOT LINE
[Symbol]	STREET CENTERLINE
[Symbol]	RIGHT OF WAY
[Symbol]	EASEMENT LINE
[Symbol]	FENCE LINE (WROUGHT IRON)
[Symbol]	BOUNDARY LINE
[Symbol]	PHASE LINE
[Symbol]	MATCHLINE
[Symbol]	PROP. WATER LINE W/ VALVE
[Symbol]	PROP. SEWER LINE W/ MANHOLE & FLOW
[Symbol]	PROP. STORM DRAIN W/ MANHOLE
[Symbol]	PROP. 1" SERVICE LATERAL W/ 3/4" METER
[Symbol]	PROP. 4" SEWER LATERAL
[Symbol]	PROP. FIRE HYDRANT
[Symbol]	PROP. DECORATIVE STREET LIGHT
[Symbol]	PROP. PRESSURE REDUCING VALVE
[Symbol]	PROP. BACKWATER VALVE
[Symbol]	PROP. PAD ELEV.
[Symbol]	PROP. FINISHED FLOOR ELEV.
[Symbol]	PROP. LOT NUMBER
[Symbol]	POINT OF CONNECTION

CONSTRUCTION NOTES

[Symbol]	8" PVC SEWER LINE
[Symbol]	48" SEWER MANHOLE OVER 6"
[Symbol]	MANHOLE REQUIRING T-LOCK
[Symbol]	10" PVC SEWER LINE
[Symbol]	8" PVC WATER LINE [5000 WATER ZONE]
[Symbol]	8" GATE VALVE
[Symbol]	REMOVE CAP AND BLOW OFF PER UDACS PLATE NO. 4A, NOTE NO. 1 AND CONNECT TO EXISTING 8" LINE
[Symbol]	8" X 8" TEE
[Symbol]	8" 11.25' BEND
[Symbol]	2" BLOW OFF ASSEMBLY PER UDACS STD. PLT. NO. 4
[Symbol]	FIRE HYDRANT ASSEMBLY W/ 8" GATE VALVE PER UDACS STD. PLT. NO. 7
[Symbol]	10" X 10" TEE
[Symbol]	1" IRRIGATION SERVICE W/ 1" METER AND RPPA PER UDACS STD. PLT. NO. 1-3 AND 11-A
[Symbol]	8" 5' BEND (CROSSMAN)
[Symbol]	8" 45' BEND
[Symbol]	10" PVC WATER LINE [5000 WATER ZONE]
[Symbol]	10" X 8" REDUCER
[Symbol]	10" GATE VALVE
[Symbol]	1" SERVICE LATERAL W/ 3/4" METER PER UDACS STD. PLT. NO. 1-3
[Symbol]	12" X 8" REDUCER (17" 12" X 10" REDUCER)



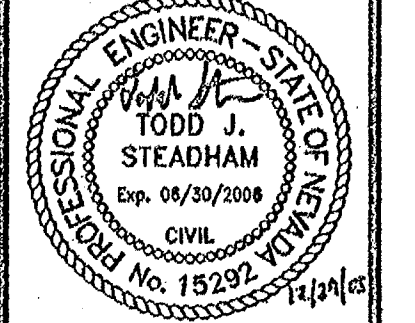
NOTE: SANITARY SEWER WYE LOCATIONS, ON ALL OFF-SITE LINES, GIVEN BY NORTHING AND EASTINGS (BASED ON N=3000.00, E=3000.00 AT THE INTER SECTION OF DORRELL LN. AND EGAN CREST DRIVE).

SLATER HANIFAN GROUP
CONSULTING ENGINEERS & PLANNERS
5740 S. ARVILLE STREET #216, LAS VEGAS, NV 89118
PHONE (702) 284-5500 FAX (702) 284-5599

NO.	DESCRIPTION	DATE	BY	APP.
1	REDESIGNED "REPAIR" EROSION CONTROL	03-03-06	DMB	
2	REVISED / ADDED WTR. CONST. DATE + PLAN	04/05/06	DMB	

PARDEE HOMES
PROVIDENCE - POD 123A + 123B, PHASE I
UTILITY PLAN III - AS BUILT

DATE:	12/29/05
DRAFTER:	DMB
DESIGNER:	DMB
CHECKED:	TJS
PROJECT NO.	PAR0401-001



U-3
SHEET 15' OF 33
10744904-1

1858
07729