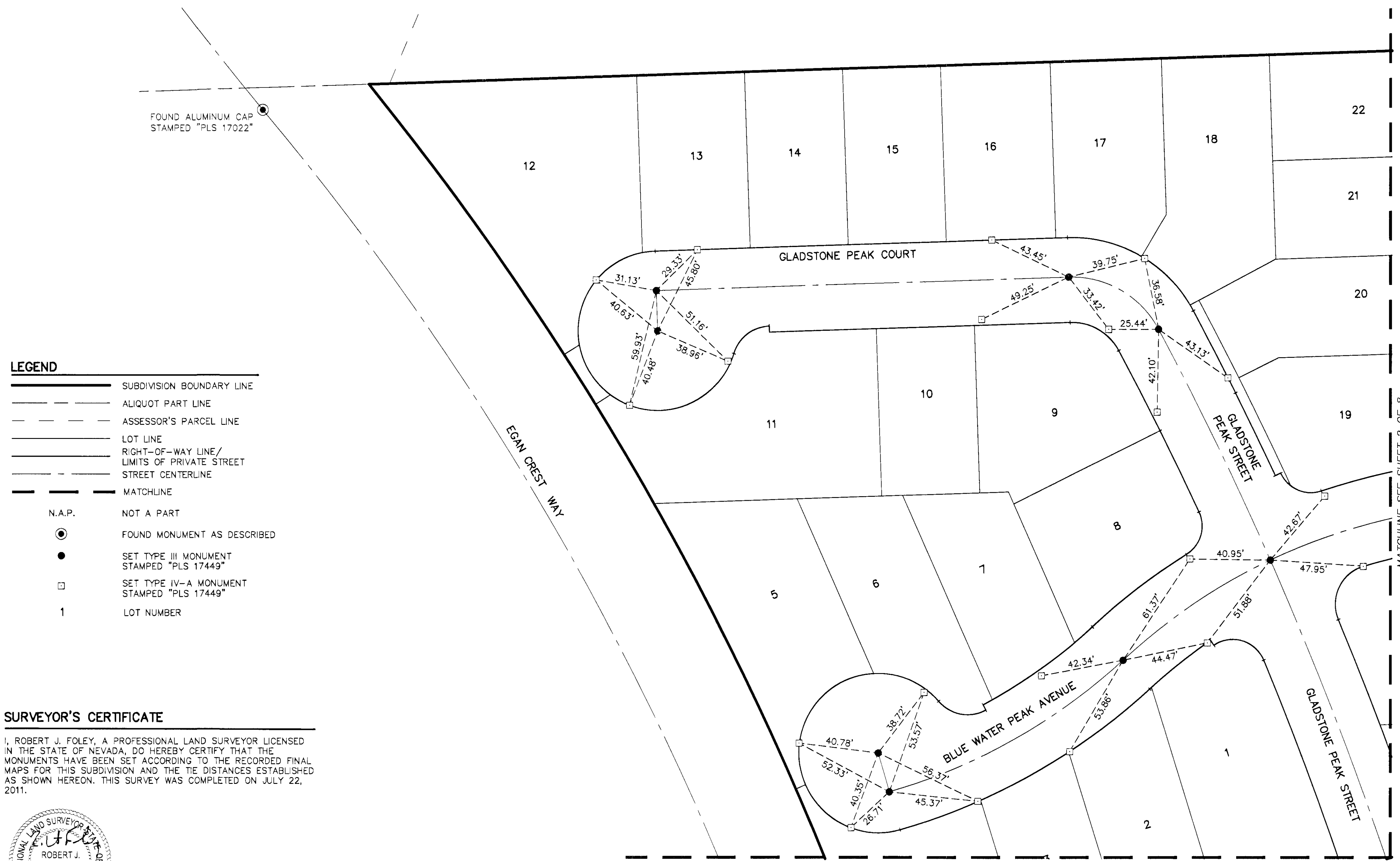
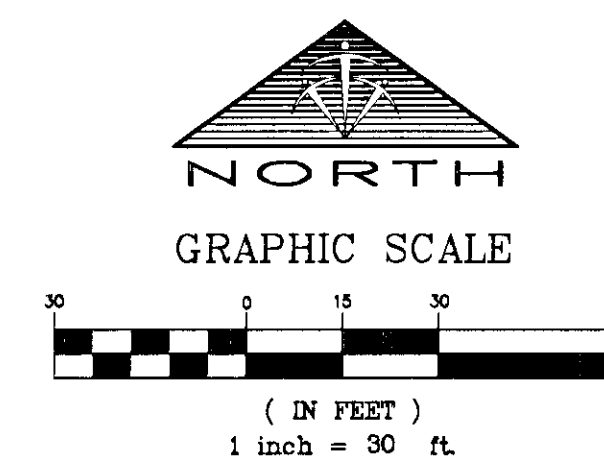


MONUMENT TIE MAP OF PODS 106 AND 109 AT PROVIDENCE MODELS & UNIT 1

AS SHOWN ON THOSE CERTAIN MAPS ON FILE IN THE CLARK COUNTY RECORDER'S OFFICE IN BOOK 133, PAGE 58 OF PLATS & BOOK 135, PAGE 28 OF PLATS, SITUATE IN THE NORTHEAST QUARTER (NE1/4) OF SECTION 13, TOWNSHIP 19 SOUTH, RANGE 59 EAST, M.D.M., CITY OF LAS VEGAS, CLARK COUNTY, NEVADA

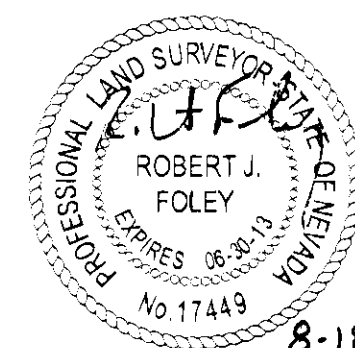


LEGEND

	SUBDIVISION BOUNDARY LINE
	ALIQUOT PART LINE
	ASSESSOR'S PARCEL LINE
	LOT LINE
	RIGHT-OF-WAY LINE/ LIMITS OF PRIVATE STREET
	STREET CENTERLINE
	MATCHLINE
N.A.P.	NOT A PART
	FOUND MONUMENT AS DESCRIBED
	SET TYPE III MONUMENT STAMPED "PLS 17449"
	SET TYPE IV-A MONUMENT STAMPED "PLS 17449"
1	LOT NUMBER

SURVEYOR'S CERTIFICATE

I, ROBERT J. FOLEY, A PROFESSIONAL LAND SURVEYOR LICENSED IN THE STATE OF NEVADA, DO HEREBY CERTIFY THAT THE MONUMENTS HAVE BEEN SET ACCORDING TO THE RECORDED FINAL MAPS FOR THIS SUBDIVISION AND THE TIE DISTANCES ESTABLISHED AS SHOWN HEREON. THIS SURVEY WAS COMPLETED ON JULY 22, 2011.



8-18-11
ROBERT J. FOLEY
PROFESSIONAL LAND SURVEYOR
NEVADA LICENSE NO. 17449

127916
JOB# 06170.0007

058-4930-1

TRI-CORE
SURVEYING, LLC

6761 WEST CHARLESTON BLVD.
LAS VEGAS, NEVADA 89146
TEL. (702) 821-1554 FAX (702) 870-4378

SHEET 1 OF 8