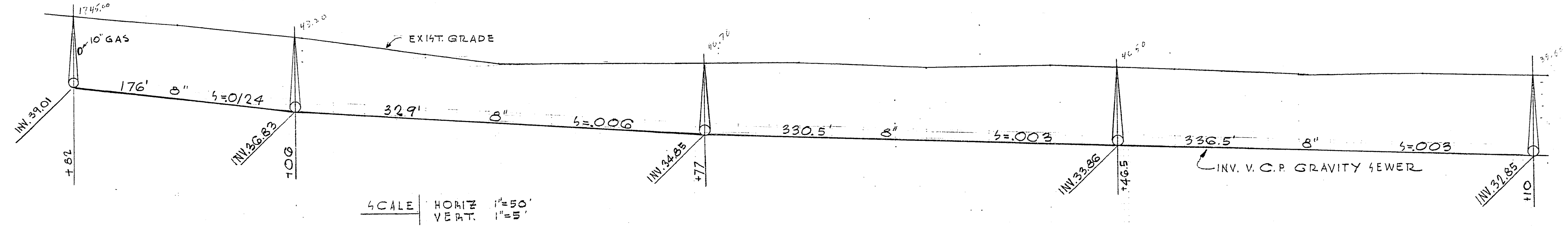


B.M. #1 ELEV. 1845.25
 CONC. NAIL NO. 41 DE STEWART
 B.C.B.M. W. SIDE 25TH ST.

PLAN F.B. LV-44 PG 41-43
 PROFILE F.B. BAL-1 PG 10-11

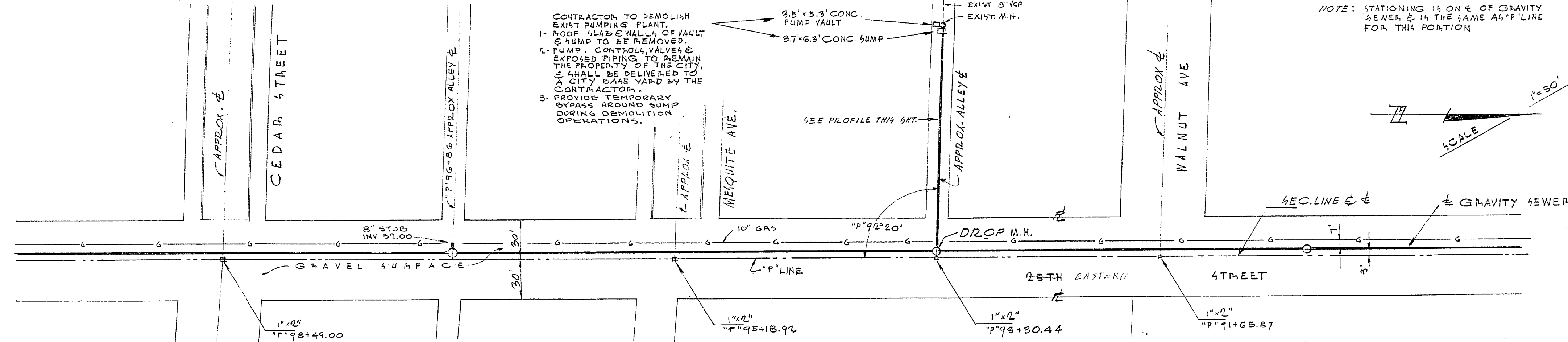
NOTE: STATIONING IS ON E OF GRAVITY SEWER & IN THE SAME AS "P" LINE STA. FOR THIS PORTION.

1845
1840
1835
1830



1845
1840
1835
1830

112 111 110+00 109 108 107 106 105 104 103 102 101 100+00



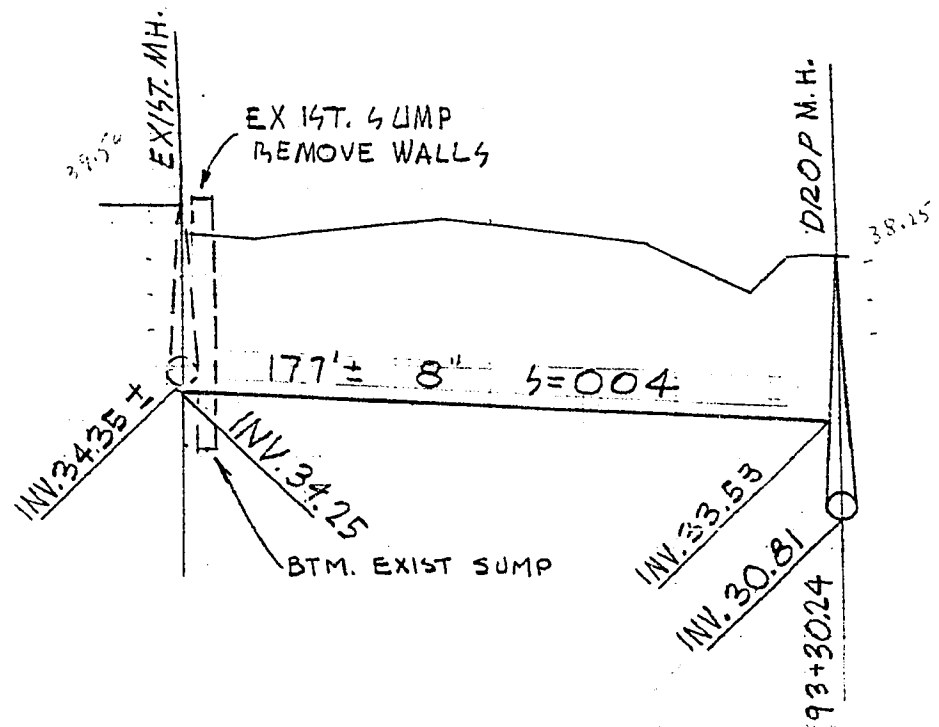
CONTRACTOR TO DEMOLISH EXIST. PUMPING PLANT. ROOF, FLOOR & WALLS OF VAULT & PUMP TO BE REMOVED. 2. PUMP, CONTROL VALVES & EXPOSED PIPING TO REMAIN THE PROPERTY OF THE CITY. & SHALL BE DELIVERED TO CITY BASE YARD BY THE CONTRACTOR. 3. PROVIDE TEMPORARY BYPASS AROUND SUMP DURING DEMOLITION OPERATIONS.

NOTE: STATIONING IS ON E OF GRAVITY SEWER & IN THE SAME AS "P" LINE FOR THIS PORTION.

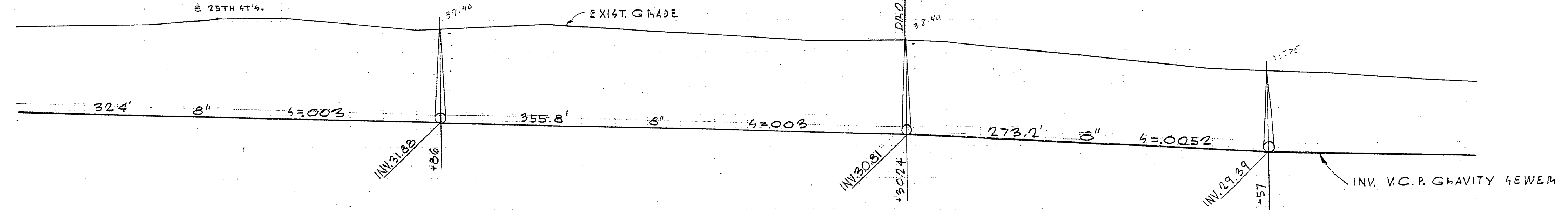
B.M. #2 ELEV. 1839.98
 4 PK. IN 40. CURB @ FROM END.
 ON CEDAR - 40. W. COR. CEDAR & 25TH ST.

PLAN F.B. LV-44 PG 39-41
 PROFILE F.B. BAL-1 PG 9-10

1840
1835
1830
1825



PROFILE OF SEWER IN ALLEY
 BETW. MEQUITE & WALNUT AVES.



1840
1835
1830
1825

100+00 99 98 97 96 95 94 93 92 91 90+00 89