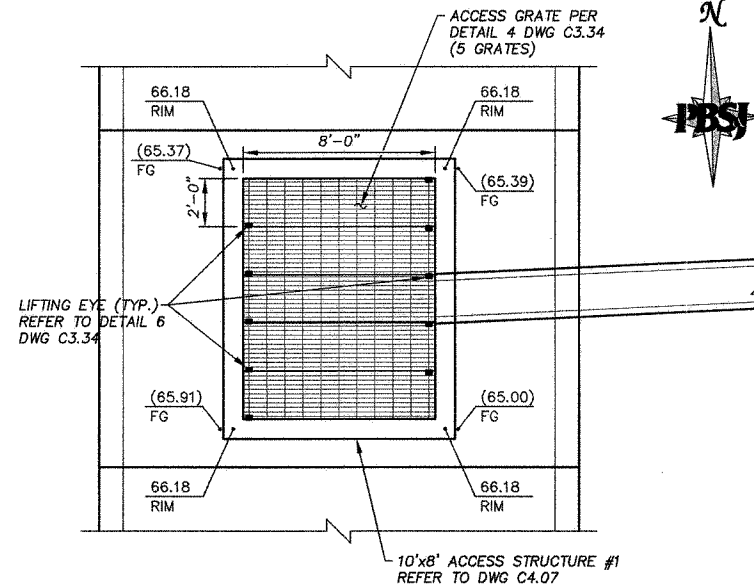
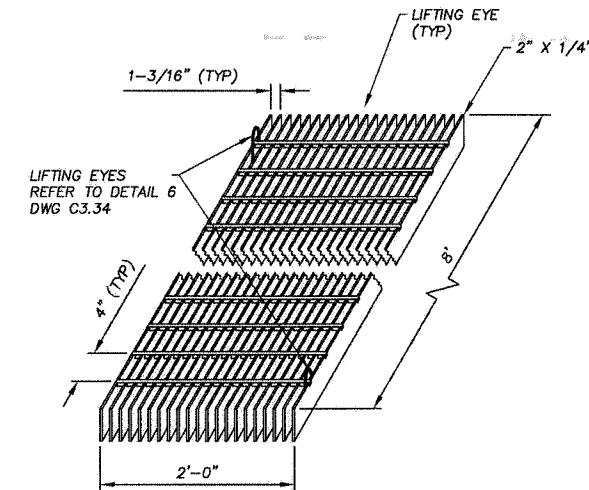


NOTE:
 1. CONCRETE DAMS TO BE CONSTRUCTED AT PRE-CAST JOINTS EVERY 500' MAX
 2. CONCRETE DAM TO EXTEND THE ENTIRE TRENCH WIDTH

CONCRETE DAM
 SCALE: N.T.S. 1
C3.34

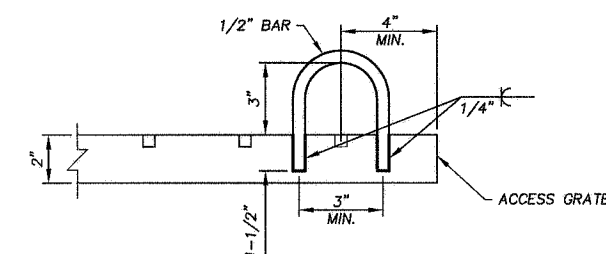


10' x 8' ACCESS STRUCTURE
 SCALE: N.T.S. 2
C3.34

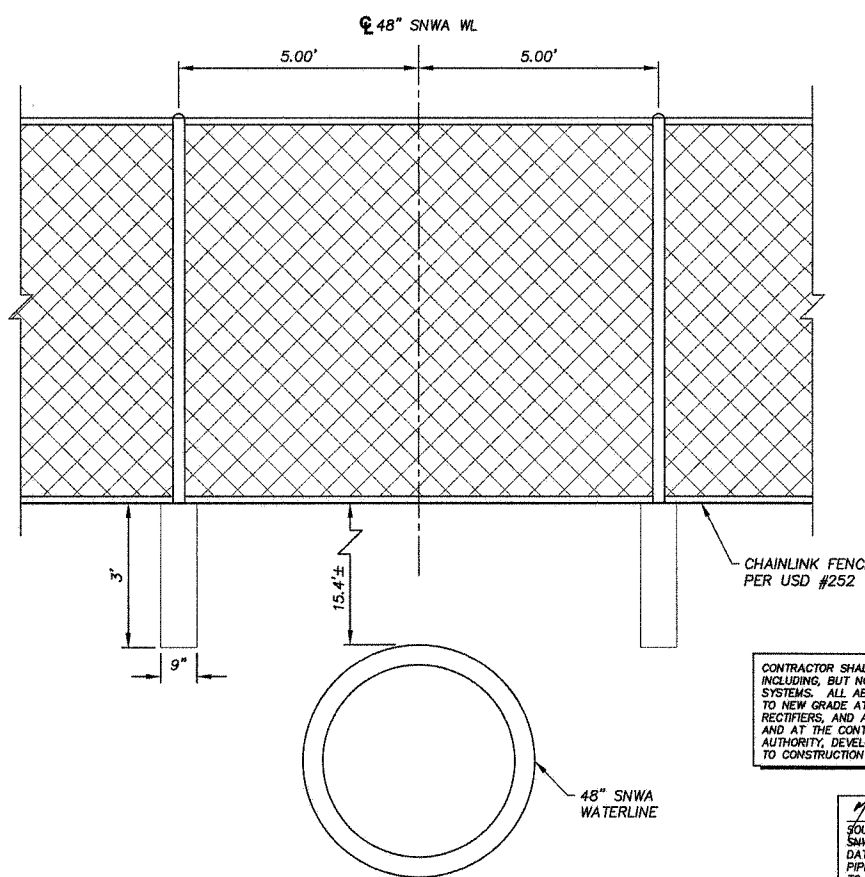


NOTE:
 1. ACCESS GRATE AS MANUFACTURED BY McNICHOLS BAR GRATING - HEAVY WELD SERIES GH8 OR APPROVED EQUAL. BAR SIZE 2" x 1/4" IS RECOMMENDED FOR 200 PSF LIVE LOAD.

ACCESS GRATE
 SCALE: N.T.S. 4
C3.34



LIFTING EYE
 SCALE: N.T.S. 6
C3.34



CONTRACTOR SHALL FIELD LOCATE AND PROTECT ALL SNWA/SNWS APPURTENANCES INCLUDING, BUT NOT LIMITED TO AV/AR, ACCESS MANWAYS AND CATHODIC PROTECTION SYSTEMS. ALL ABOVE GROUND STRUCTURES AND AT GRADE STRUCTURES MUST BE ADJUSTED TO NEW GRADE AT CONTRACTOR'S EXPENSE. CATHODIC PROTECTION TEST STATIONS, RECTIFIERS, AND AV/AR'S MUST BE RELOCATED TO THE SIDEWALK PER SNWA STANDARDS, AND AT THE CONTRACTOR'S EXPENSE. CONTRACTOR TO NOTIFY SOUTHERN NEVADA WATER AUTHORITY, DEVELOPMENT PLAN REVIEW, AT (702) 882-3444 AT LEAST 48 HOURS PRIOR TO CONSTRUCTION ACTIVITY.

M. D. SHAR
 SOUTHERN NEVADA WATER AUTHORITY
 SNWA APPROVAL IS VALID FOR (1) YEAR FROM THE SIGNATURE DATE. IF CONSTRUCTION WITHIN THE EASEMENT OR RESTRICTED PIPE SAFETY ZONE IS NOT COMPLETE, PLANS MUST BE RESUBMITTED TO SNWA FOR APPROVAL.
 DATE: 5/12/09

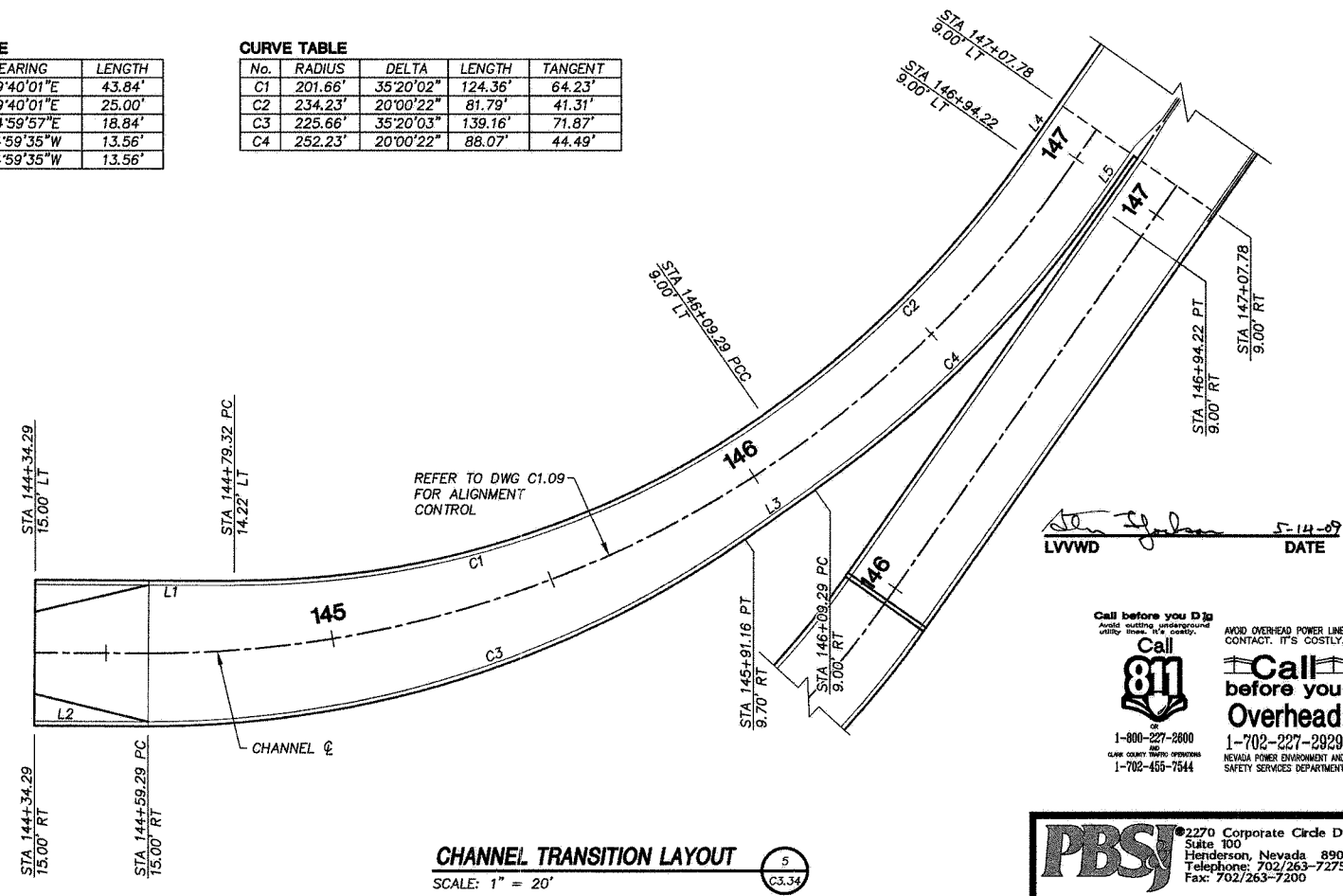
**FENCE CROSSING SNWA 48\"/>
 SCALE: N.T.S. 3
C3.34**

LINE TABLE

No.	BEARING	LENGTH
L1	S89°40'01\"/>	
L2	S89°40'01\"/>	
L3	N54°59'57\"/>	
L4	S34°59'35\"/>	
L5	S34°59'35\"/>	

CURVE TABLE

No.	RADIUS	DELTA	LENGTH	TANGENT
C1	201.66'	35°20'02\"/>		
C2	234.23'	20°00'22\"/>		
C3	225.66'	35°20'03\"/>		
C4	252.23'	20°00'22\"/>		



CHANNEL TRANSITION LAYOUT
 SCALE: 1" = 20' 5
C3.34

**DEPARTMENT OF PUBLIC WORKS
 ENGINEERING DESIGN SECTION**

CITY ENGINEER: CHERI EDELMAN, P.E.
 CITY PROJECT ENGINEER: MICHAEL STURDIVANT, P.E.
 PROJECT MANAGER: ANGELO SPATA, P.E.
 DESIGN BY: SMB
 DRAWN BY: AV

CHECK BY: AAS
 DATE: MAY 2009

**TITLE: OAKLEY/MEADOWS STORM DRAIN
 PHASE 1
 CHARLESTON BOULEVARD TO ALTA DRIVE**

DETAILS

Call before you Dig
 Avoid cutting, underground utility work.

Call 811 before you Overhead

1-800-227-2800
 one hour toll-free service
 1-702-455-7544

AVOID OVERHEAD POWER LINE CONTACT. IT'S COSTLY.

Call before you Overhead
 1-702-227-2929
 NEVADA POWER ENVIRONMENT AND SAFETY SERVICES DEPARTMENT

ANGELO A. SPATA
 EXP. 06-30-10
 CIVIL
 No. 15753

PBSJ 2270 Corporate Circle Drive
 Suite 100
 Henderson, Nevada 89074
 Telephone: 702/263-7275
 Fax: 702/263-7200

ENGINEERING - PLANNING - SURVEYING - CONSTRUCTION SERVICES

SHEET: **C3.34**
 71 of 139
 DRAWING: **327/284**

X:\Transportation Design Nevada\projects\511566\PHASE 1 Sheets\1566-PH1 C3.34 05-07-09 02:09pm