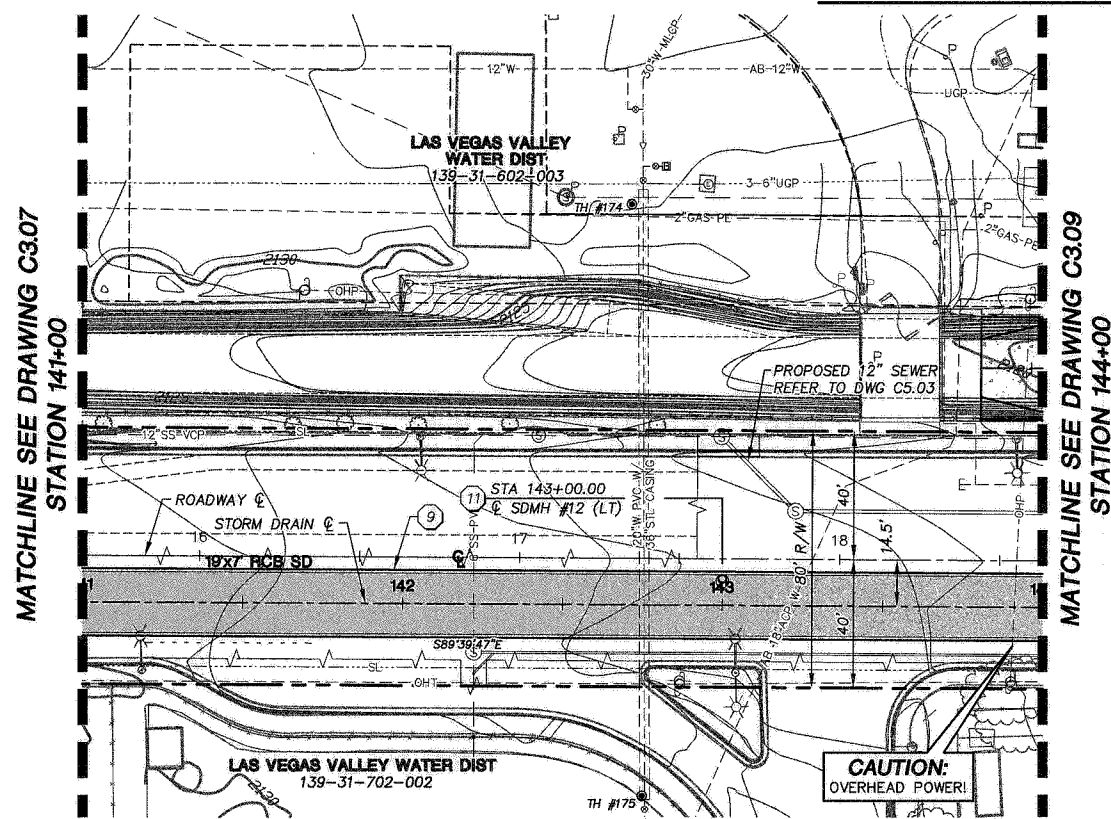


**ALTA DRIVE**



MATCHLINE SEE DRAWING C3.07  
STATION 141+00

MATCHLINE SEE DRAWING C3.09  
STATION 144+00

Call before you dig  
811  
1-800-227-2689  
www.811.com  
1-702-455-7544

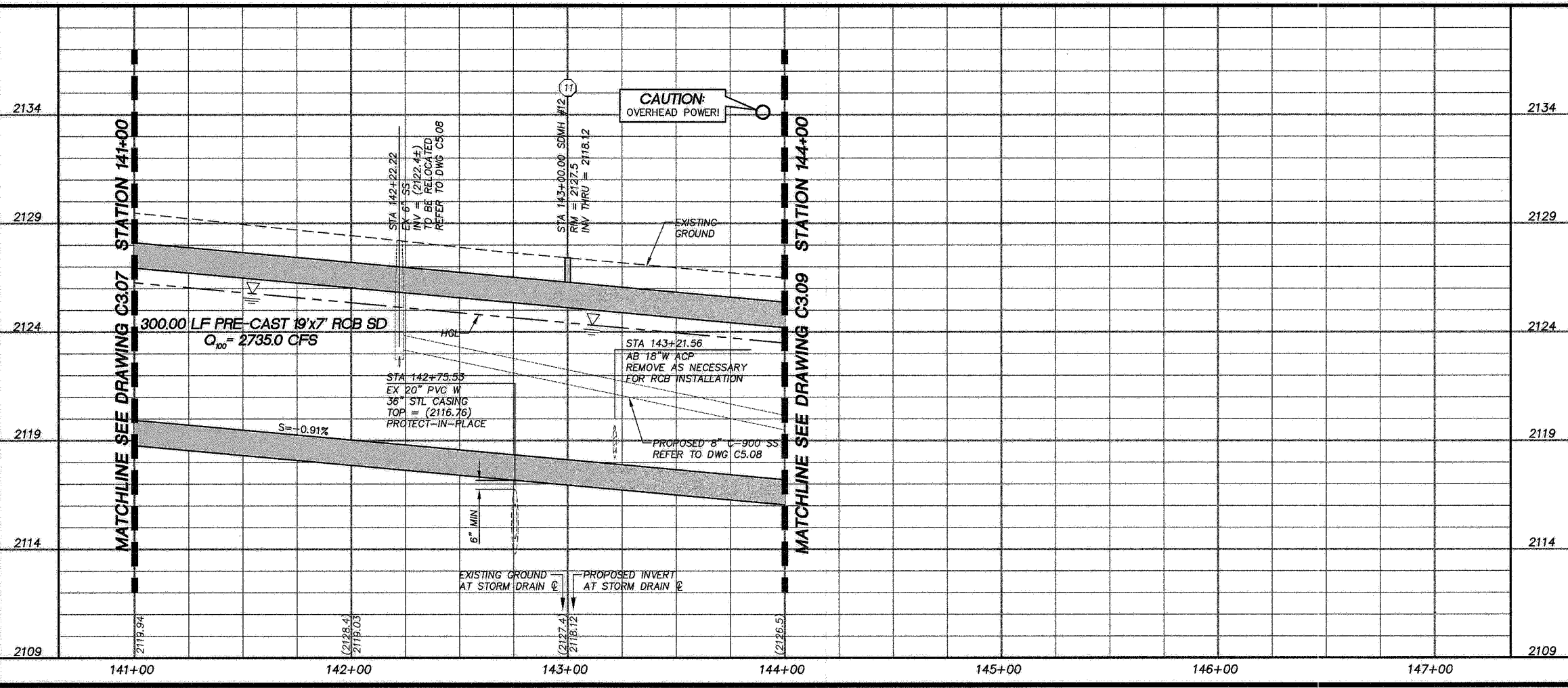
NEVER OPEN UP A POWER LINE  
CONTACT. IT'S COSTLY.  
Call before you Overhead  
1-702-227-2929  
NEVADA POWER DEPARTMENT AND  
SAFETY SERVICES DEPARTMENT

LWWD *[Signature]* DATE 5-14-09

CONCRETE DAM TO BE CONSTRUCTED IN THE RCB TRENCH FOR THE ENTIRE LENGTH OF THE RCB SD MAINLINE PER DETAIL 1 DRAWING C3.34

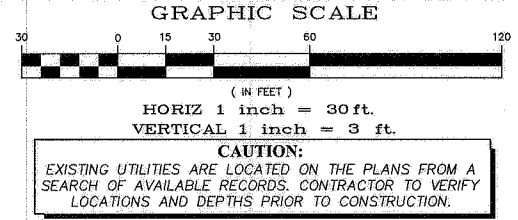
CONTRACTOR TO TAKE ALL NECESSARY STEPS AND PRECAUTIONS TO ENSURE EXISTING UTILITIES REMAIN STABLE AND IN PLACE DURING RCB INSTALLATION (NO DIRECT PAYMENT)

- KEY NOTES**
1. INSTALL 18" RCP SD PER TRENCH DETAIL 1 DRAWING C3.28
  2. INSTALL 24" RCP SD PER TRENCH DETAIL 1 DRAWING C3.28
  3. INSTALL 30" RCP SD PER TRENCH DETAIL 1 DRAWING C3.28
  4. INSTALL 14"x23" HE RCP SD PER TRENCH DETAIL 1 DRAWING C3.28
  5. INSTALL PRE-CAST 6"x5' RCB SD PER TRENCH DETAIL 1 DRAWING C3.28
  6. INSTALL 7"x3' RCB SD PER DWG C4.30 & TRENCH DETAIL 1 DRAWING C3.28
  7. INSTALL PRE-CAST 8"x5' RCB SD PER TRENCH DETAIL 1 DRAWING C3.28
  8. INSTALL PRE-CAST 18"x9' RCB SD PER TRENCH DETAIL 1 DRAWING C3.28
  9. INSTALL PRE-CAST 19"x7' RCB SD PER TRENCH DETAIL 1 DRAWING C3.28
  10. INSTALL PRE-CAST 19"x8' RCB SD PER TRENCH DETAIL 1 DRAWING C3.28
  11. INSTALL ACCESS MH (36") W/ STEPS PER DETAIL 4 DRAWING C3.29
  12. INSTALL ACCESS MH (48") W/ STEPS PER DETAIL 5 DRAWING C3.29
  13. CONSTRUCT JUNCTION STRUCTURE #1 PER DRAWING C4.05
  14. CONSTRUCT JUNCTION STRUCTURE #2 PER DRAWING C4.12
  15. CONSTRUCT JUNCTION MANHOLE TYPE 1 PER DRAWING C4.09
  16. CONSTRUCT 10"x8" ACCESS STRUCTURE #1 PER DRAWING C4.07
  17. CONSTRUCT TYPE D INLET PER USD #414
  18. CONSTRUCT TYPE "C" MODIFIED INLET PER USD #412A
  19. CONSTRUCT TYPE "D" MODIFIED INLET PER USD #412A
  20. CONSTRUCT TYPE 2A INLET PER NDOT STD DRAWING R-4.2.1 W/ CONCRETE APRON PER DETAIL 1 DRAWING C3.33
  21. INSTALL PRE-CAST RCB TRANSITION
  22. CONSTRUCT CONCRETE CHANNEL PER DRAWINGS C3.18 - C3.24
  23. INSTALL TEMPORARY CLOSURE WALL PER DRAWING C4.32
  24. PIPE PENETRATION PER DETAIL 3 DRAWING C3.29
  25. PIPE PENETRATION PER DETAIL 5 DRAWING C4.02
  26. INSTALL CONCRETE COLLAR PER DETAIL 1 DRAWING 3.29
  27. INSTALL 8" STEEL TUBE FENCE PER DETAIL 1 DRAWING C3.30
  28. INSTALL POST & CABLE FENCE PER DETAIL 6 DRAWING C3.29
  29. INSTALL 72" CHAINLINK FENCE W/ BARBED WIRE PER USD #252 & PER DETAIL 3 DRAWING C3.34
  30. INSTALL RESIN PAVEMENT W/ TYPE II BASE PER DWG C3.18 - C3.24
  31. INSTALL 6" TYPE II ACCESS ROAD PER DRAWINGS C3.18 - C3.24
  32. CONSTRUCT 2" CONCRETE VALLEY GUTTER PER DETAIL 4 DRAWING C3.31
  33. CONSTRUCT 6" CONCRETE VALLEY GUTTER PER DETAIL 1 DRAWING C3.32
  34. INSTALL ACCESS LADDER PER DETAIL 1 DRAWING C3.31
  35. INSTALL 8" STEEL TUBE SINGLE ACCESS GATE PER DETAIL 3 DRAWING C3.35
  36. INSTALL 8" STEEL TUBE DOUBLE ACCESS GATE PER DETAIL 2 DRAWING C3.30
  37. REMOVE AND REPLACE EXISTING WATERLINE PER DETAIL 1 DRAWING C5.09
  38. CONCRETE ENCASE EXISTING SANITARY SEWER PER DETAIL 2 DRAWING C3.29
  39. INSTALL 4" STEEL TUBE FENCE PER DETAIL 1 DRAWING C3.35
  40. ADJUST/RELOCATE POWER VAULT TO FINISH GRADE PER NV ENERGY PLANS
  41. INSTALL 5" (MIN) THICK HEAVY RIPRAP D50=24" W/ FILTER FABRIC
  42. CONSTRUCT CLOSURE POUR PER DRAWING C4.14
  43. CONSTRUCT TYPE II HEADWALL PER NDOT STD DRAWING B-20.1.4
  44. CONSTRUCT CONCRETE ACCESS RAMP PER DRAWING C4.15 & C4.16
  45. INSTALL 12"x12" DROP INLET PER DETAIL 5 DRAWING 3.32
  46. CONNECT TO EXISTING RCB SD PER DETAIL 3 DRAWING C4.01
  47. CONSTRUCT PCC MEDIAN SURFACE PER USD #218
  48. INSTALL 12" (MIN) THICK LIGHT RIPRAP D50=6" W/ FILTER FABRIC
  49. SNWA CROSSING PER DETAIL 3 DRAWING C3.33
  50. PLUG EXISTING RCP SD PER DETAIL 3 DRAWING C3.28
  51. INSTALL 4" STEEL TUBE SINGLE ACCESS GATE PER DETAIL 2 DRAWING C3.35
  52. PROTECT-IN-PLACE - CONTRACTOR TO SUPPORT UTILITY ACROSS TRENCH



MATCHLINE SEE DRAWING C3.07  
STATION 141+00

MATCHLINE SEE DRAWING C3.09  
STATION 144+00



**SHEET INDEX**

2270 Corporate Circle Drive  
Suite 100  
Henderson, Nevada 89074  
Telephone: 702/263-7275  
Fax: 702/263-7200

**PBSJ**  
ENGINEERING - PLANNING - SURVEYING - CONSTRUCTION SERVICES

**DEPARTMENT OF PUBLIC WORKS  
ENGINEERING DESIGN SECTION**

CITY ENGINEER: CHERI EDELMAN, P.E.  
CITY PROJECT ENGINEER: MICHAEL STURDIVANT, P.E.  
PROJECT MANAGER: ANGELO SPATA, P.E.  
DESIGN BY: AAS  
DRAWN BY: RPW  
DATE: MAY 2009

**OAKEY/MEADOWS STORM DRAIN  
PHASE 1  
PLAN AND PROFILE  
CHARLESTON BOULEVARD TO ALTA DRIVE  
STA 141+00.00 TO STA 144+00.00**

PROFESSIONAL ENGINEER - STATE OF NEVADA  
ANGELO A. SPATA  
EXP. 06-30-16  
CIVIL  
No. 5753

SHEET: **C3.08**  
45 of 139  
DRAWING# 327V284

X:\Transportation\Design\Newada\projects\511560\PHASE 1\Sheet\1566-PH1 C3.08 05-05-09 11:07am

117767