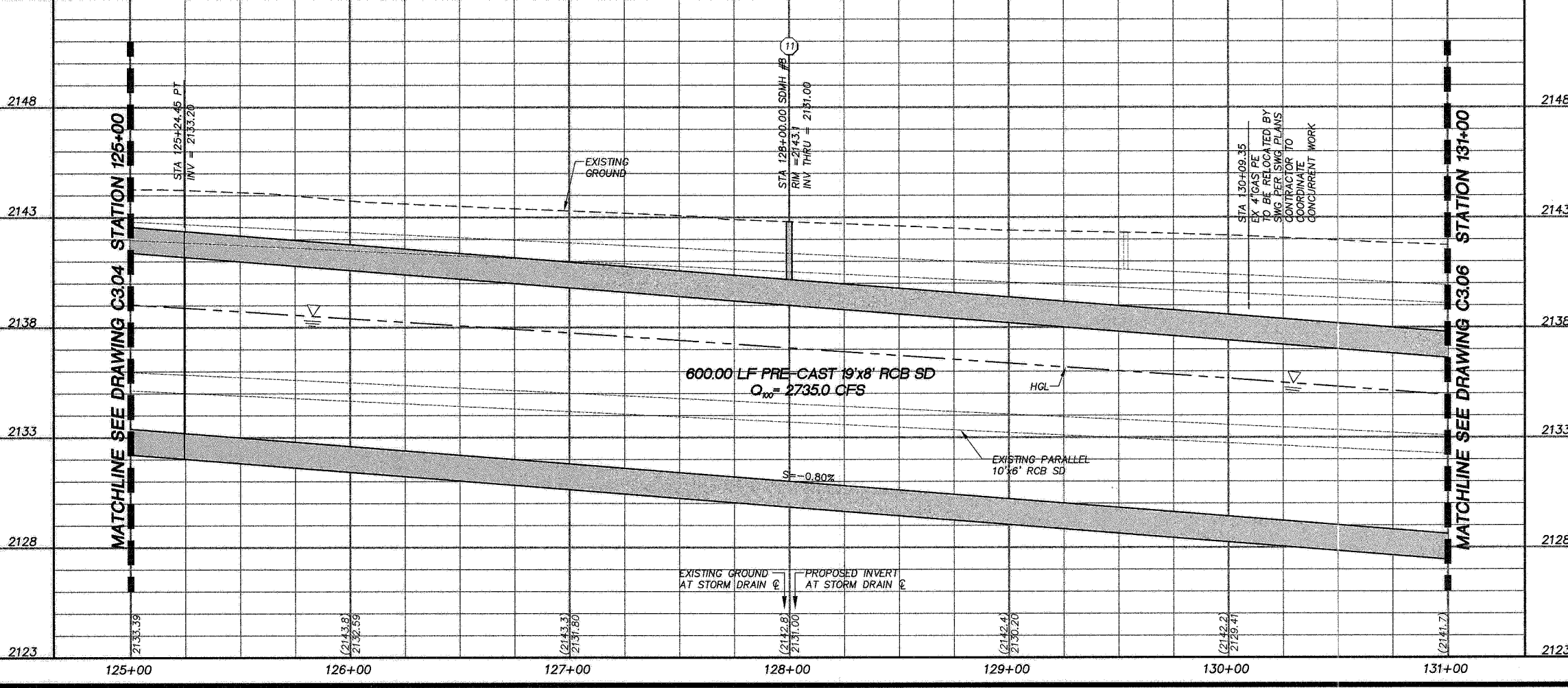
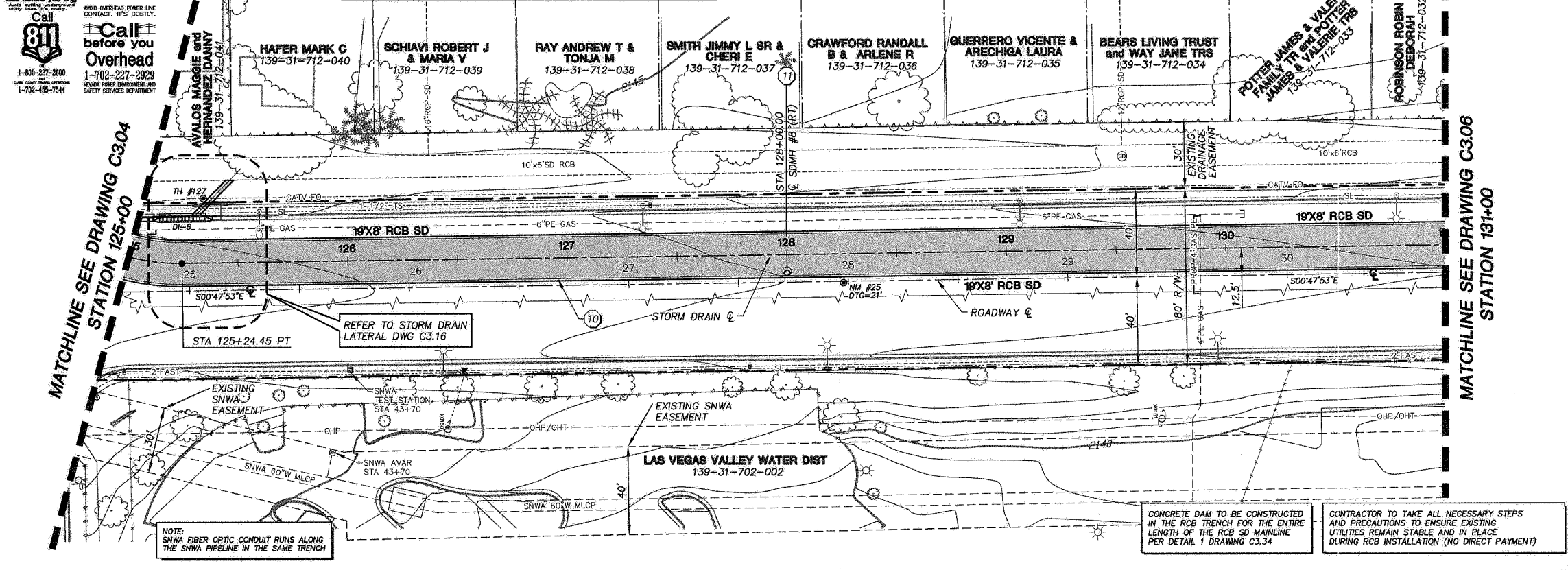


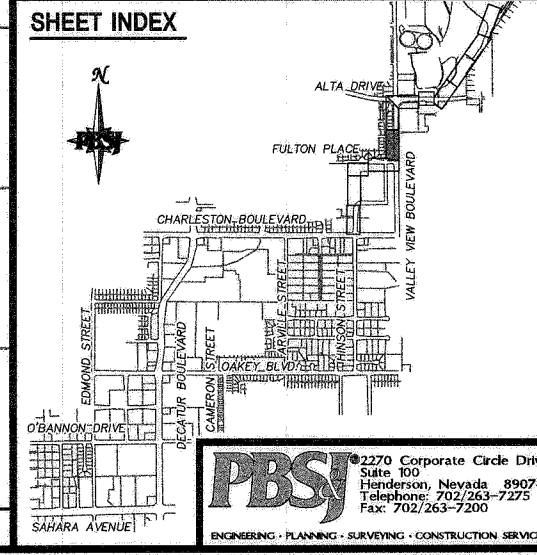
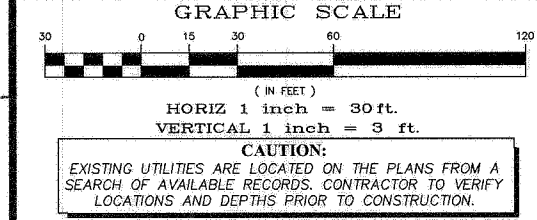
DATE: 5/12/09  
 SOUTHERN NEVADA WATER AUTHORITY  
 SNWA APPROVAL IS VALID FOR (1) YEAR FROM THE SIGNATURE DATE. IF CONSTRUCTION WITHIN THE EASEMENT OR RESTRICTED PIPE SAFETY ZONE IS NOT COMPLETE, PLANS MUST BE RESUBMITTED TO SNWA FOR APPROVAL.

CONTRACTOR SHALL FIELD LOCATE AND PROTECT ALL SNWA/SNWS APPURTENANCES INCLUDING, BUT NOT LIMITED TO AV/AR, ACCESS MANWAYS AND CATHODIC PROTECTION SYSTEMS. ALL ABOVE GROUND STRUCTURES AND AT GRADE STRUCTURES MUST BE ADJUSTED TO NEW GRADE AT CONTRACTORS EXPENSE. CATHODIC PROTECTION TEST STATIONS, RECTIFIERS, AND AV/AR'S MUST BE RELOCATED TO THE SIDEWALK PER SNWA STANDARDS, AND AT THE CONTRACTORS EXPENSE. CONTRACTOR TO NOTIFY SOUTHERN NEVADA WATER AUTHORITY, DEVELOPMENT PLAN REVIEW, AT (702) 862-3444 AT LEAST 48 HOURS PRIOR TO CONSTRUCTION ACTIVITY.

**VALLEY VIEW BOULEVARD**



- KEY NOTES**
- INSTALL 18" RCP SD PER TRENCH DETAIL 1 DRAWING C3.28
  - INSTALL 24" RCP SD PER TRENCH DETAIL 1 DRAWING C3.28
  - INSTALL 30" RCP SD PER TRENCH DETAIL 1 DRAWING C3.28
  - INSTALL 14"x23" HE RCP SD PER TRENCH DETAIL 1 DRAWING C3.28
  - INSTALL PRE-CAST 8'x5' RCB SD PER TRENCH DETAIL 1 DRAWING C3.28
  - INSTALL 7'x3' RCB SD PER DWG C4.30 & TRENCH DETAIL 1 DRAWING C3.28
  - INSTALL PRE-CAST 8'x5' RCB SD PER TRENCH DETAIL 1 DRAWING C3.28
  - INSTALL PRE-CAST 18'x9' RCB SD PER TRENCH DETAIL 1 DRAWING C3.28
  - INSTALL PRE-CAST 19'x7' RCB SD PER TRENCH DETAIL 1 DRAWING C3.28
  - INSTALL PRE-CAST 19'x8' RCB SD PER TRENCH DETAIL 1 DRAWING C3.28
  - INSTALL ACCESS MH (36") W/ STEPS PER DETAIL 4 DRAWING C3.29
  - INSTALL ACCESS MH (48") W/ STEPS PER DETAIL 5 DRAWING C3.29
  - CONSTRUCT JUNCTION STRUCTURE #1 PER DRAWING C4.05
  - CONSTRUCT JUNCTION STRUCTURE #2 PER DRAWING C4.12
  - CONSTRUCT JUNCTION MANHOLE TYPE I PER DRAWING C4.09
  - CONSTRUCT 10'x8' ACCESS STRUCTURE #1 PER DRAWING C4.07
  - CONSTRUCT TYPE D INLET PER USD #414
  - CONSTRUCT TYPE "C" MODIFIED INLET PER USD #412A
  - CONSTRUCT TYPE "D" MODIFIED INLET PER USD #412A
  - CONSTRUCT TYPE 2A INLET PER NDOT STD DRAWING R-4.2.1 W/ CONCRETE APRON PER DETAIL 1 DRAWING C3.33
  - INSTALL PRE-CAST RCB TRANSITION
  - CONSTRUCT CONCRETE CHANNEL PER DRAWINGS C3.18 - C3.24
  - INSTALL TEMPORARY CLOSURE WALL PER DRAWING C4.32
  - PIPE PENETRATION PER DETAIL 3 DRAWING C3.29
  - PIPE PENETRATION PER DETAIL 5 DRAWING C4.02
  - INSTALL CONCRETE COLLAR PER DETAIL 1 DRAWING 3.29
  - INSTALL 8" STEEL TUBE FENCE PER DETAIL 1 DRAWING C3.30
  - INSTALL POST & CABLE FENCE PER DETAIL 6 DRAWING C3.29
  - INSTALL 72" CHAINLINK FENCE W/ BARBED WIRE PER USD #252 & PER DETAIL 3 DRAWING C3.34
  - INSTALL RESIN PAVEMENT W/ TYPE II BASE PER DWG C3.18 - C3.24
  - INSTALL 6" TYPE II ACCESS ROAD PER DRAWINGS C3.18 - C3.24
  - CONSTRUCT 2" CONCRETE VALLEY GUTTER PER DETAIL 4 DRAWING C3.31
  - CONSTRUCT 6" CONCRETE VALLEY GUTTER PER DETAIL 1 DRAWING C3.32
  - INSTALL ACCESS LADDER PER DETAIL 1 DRAWING C3.31
  - INSTALL 8" STEEL TUBE SINGLE ACCESS GATE PER DETAIL 3 DRAWING C3.35
  - INSTALL 8" STEEL TUBE DOUBLE ACCESS GATE PER DETAIL 2 DRAWING C3.30
  - REMOVE AND REPLACE EXISTING WATERLINE PER DETAIL 1 DRAWING C5.09
  - CONCRETE ENCASE EXISTING SANITARY SEWER PER DETAIL 2 DRAWING C3.29
  - INSTALL 4" STEEL TUBE FENCE PER DETAIL 1 DRAWING C3.35
  - ADJUST/RELOCATE POWER VAULT TO FINISH GRADE PER NV ENERGY PLANS
  - INSTALL 5" (MIN) THICK HEAVY RIPRAP D50=24" W/ FILTER FABRIC
  - CONSTRUCT CLOSURE POUR PER DRAWING C4.14
  - CONSTRUCT TYPE II HEADWALL PER NDOT STD DRAWING B-20.1.4
  - CONSTRUCT CONCRETE ACCESS RAMP PER DRAWING C4.15 & C4.16
  - INSTALL 12"x12" DROP INLET PER DETAIL 5 DRAWING 3.32
  - CONNECT TO EXISTING RCB SD PER DETAIL 3 DRAWING C4.01
  - CONSTRUCT PCC MEDIAN SURFACE PER USD #218
  - INSTALL 12" (MIN) THICK LIGHT RIPRAP D50=6" W/ FILTER FABRIC
  - SNWA CROSSING PER DETAIL 3 DRAWING C3.33
  - PLUG EXISTING RCP SD PER DETAIL 3 DRAWING C3.28
  - INSTALL 4" STEEL TUBE SINGLE ACCESS GATE PER DETAIL 2 DRAWING C3.35
  - PROTECT-IN-PLACE - CONTRACTOR TO SUPPORT UTILITY ACROSS TRENCH



**DEPARTMENT OF PUBLIC WORKS**  
**ENGINEERING DESIGN SECTION**  
 CITY ENGINEER: CHERI EDELMAN, P.E.  
 CITY PROJECT ENGINEER: MICHAEL STURDIVANT, P.E.  
 PROJECT MANAGER: ANGELO SPATA, P.E.  
 DESIGN BY: SMB  
 DRAWN BY: RPW  
 CHECK BY: AAS  
 DATE: MAY 2009

**OKAKEY/MEADOWS STORM DRAIN**  
**PHASE 1**  
**CHARLESTON BOULEVARD TO ALTA DRIVE**  
**PLAN AND PROFILE**  
 STA 125+00.00 TO STA 131+00.00



SHEET: **C3.05**  
 42 of 139  
 DRAWING: 327V284

**PBSJ**  
 2270 Corporate Circle Drive  
 Suite 100  
 Henderson, Nevada 89074  
 Telephone: 702/263-7275  
 Fax: 702/263-7200

X:\Transportation Design Nevada\Projects\011566\PHASE 1 Sheets\1566-PH1 C3.05 \*5-05-09 11:03am

117764