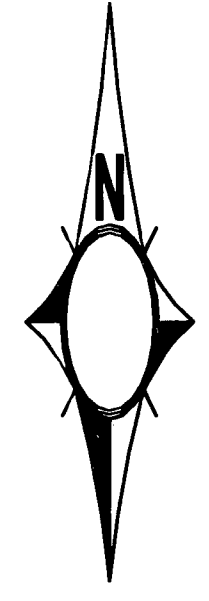


MATCHLINE 'O' STA. 56+00 SEE SHEET SD-03

MATCHLINE 'O' STA. 62+00 SEE SHEET SD-05

SEE SHEET SD-04A FOR DETAILS

- NOTES:**
1. REFER TO SHEETS SS-01 TO SS-07 FOR SANITARY SEWER PLANS
  2. REFER TO SHEETS UT-01 TO UT-07 FOR UTILITY PLANS
  3. REFER TO SHEETS C-01 TO C-03 FOR REMOVALS AND PAVEMENT PLANS
  4. REFER TO SHEETS ST-01 TO ST-03 FOR STRIPING PLANS
  5. REFER TO SHEETS TY-01 TO TY-03 FOR STORM DRAIN TRENCH DETAILS AND TYPICALS
  6. LOCATIONS OF EXISTING SANITARY SEWER, EXISTING UTILITIES ARE APPROXIMATE. CONTRACTOR SHALL VERIFY THEIR LOCATIONS IN THE FIELD PRIOR TO CONSTRUCTION



**DRAINAGE NOTES**

1. PROTECT-IN-PLACE
2. CONSTRUCT 5'x5' PRECAST RCB
3. CONSTRUCT 8'x8' PRECAST RCB
4. CONSTRUCT 10'x8' PRECAST RCB
5. CONSTRUCT 18" RCP (CLASS III)
6. CONSTRUCT 24" RCP (CLASS III)
7. CONSTRUCT 30" RCP (CLASS III)
8. CONSTRUCT 36" RCP (CLASS III)
9. CONSTRUCT 48" RCP (CLASS III)
10. CONSTRUCT 19"x30" HERCP (CLASS III)
11. CONSTRUCT 24"x38" HERCP (CLASS III)
12. NOT USED
13. CONSTRUCT 34"x53" HERCP (CLASS III)
14. CONSTRUCT PRECAST 60" (TYPE II) STORM DRAIN MANHOLE PER USCCA STD DWG No. 405
15. CONSTRUCT PRECAST RCB ACCESS MANHOLE PER DETAIL ON DT-02
16. CONSTRUCT 2.5' TYPE "DM" DROP INLET PER DETAIL ON DT-01
17. CONSTRUCT 20" TYPE "DM" DROP INLET PER DETAIL ON SHEET DT-01
18. CONSTRUCT 5'x5' TO 5'x5' PRECAST RCB TRANSITION STRUCTURE (REFER TO SHEET DT-03 FOR DETAILS)
19. CONSTRUCT 5'x5' TO 5'x8' PRECAST RCB TRANSITION STRUCTURE (REFER TO SHEET DT-03 FOR DETAILS)
20. CONSTRUCT 5'x8' TO 8'x8' PRECAST RCB TRANSITION STRUCTURE (REFER TO SHEET DT-03 FOR DETAILS)
21. CONSTRUCT 8'x8' TO 10'x8' PRECAST RCB TRANSITION STRUCTURE (REFER TO SHEET DT-03 FOR DETAILS)
22. CONSTRUCT PRECAST RCB WYE (REFER TO SHEET DT-04 FOR DETAILS)
23. CONSTRUCT PLUG FOR RCB (REFER TO SHEET DT-05 FOR DETAILS, NO DIRECT PAYMENT)
24. REMOVE EXISTING RCB PLUG AND TIE INTO EXISTING RCB (NO DIRECT PAYMENT)
25. REPLACE EXISTING VCP SANITARY SEWER PIPE WITH C900 PIPE WITHIN THE LIMITS OF THE TRENCH (LENGTH OF REPLACEMENT=WIDTH+2') (REFER TO DCSWCS SD-19 FOR DETAILS)
26. CONSTRUCT PRECAST 72" (TYPE II) STORM DRAIN MANHOLE PER USCCA STD DWG No. 405

**STORM DRAIN NOTES:**

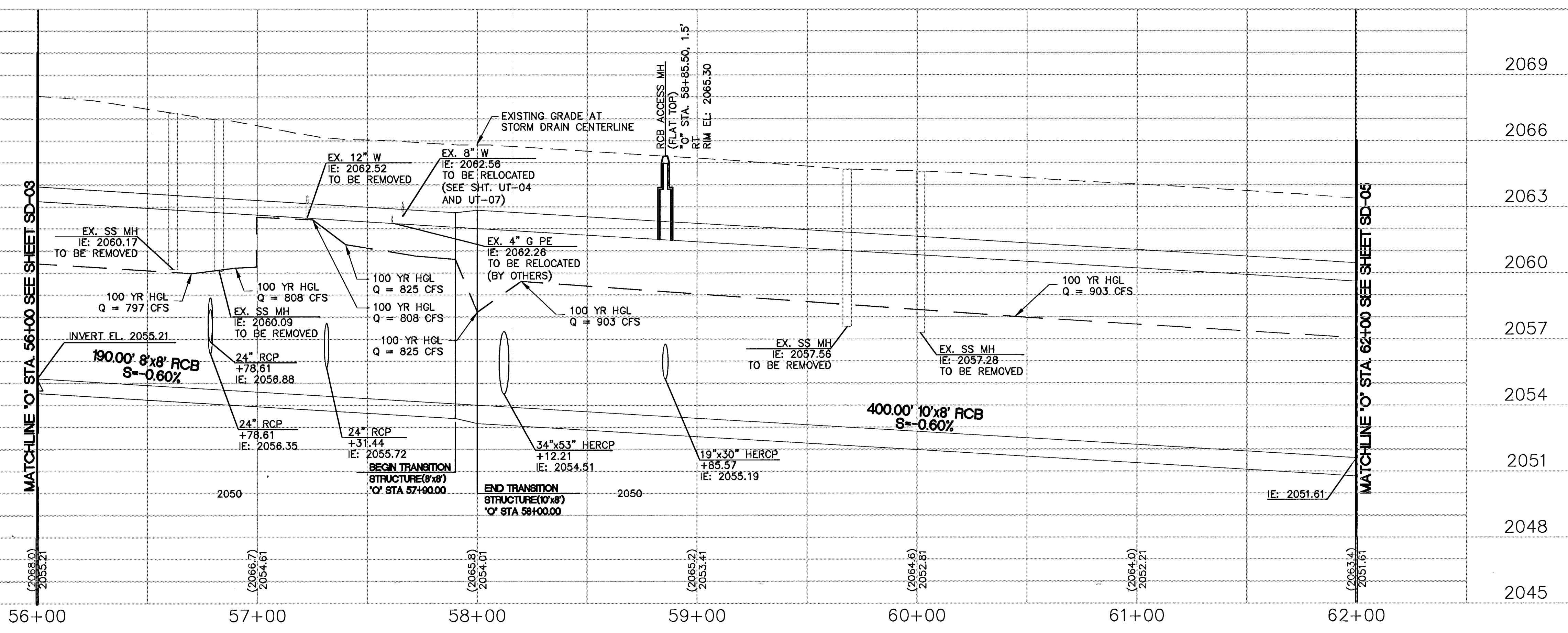
1. ALL STORM SEWER STATION AND OFFSETS ARE TAKEN FROM THE OAKLEY BOULEVARD ("O") ALIGNMENT.
2. ALL LATERAL PIPE LENGTHS MEASURED ALONG PIPE CENTERLINE TO CENTER OF MANHOLE OR INSIDE EDGE OF DI, RCB, OR STRUCTURE.

**WATER LINE NOTES:**

1. ALL SEWER/STORM DRAINS CROSSING WATER LINES MUST CONFORM TO SECTION 219 OF THE UNIFORM DESIGN AND CONSTRUCTION STANDARDS FOR POTABLE WATER SYSTEMS (UDACS) FOR WATER AND STORM MAIN CROSSINGS AND CLEARANCES.
2. PROTECT WATER LINES IN PLACE. WHEREVER A WATER LINE IS WITHIN 18" ABOVE A STORM DRAIN LINE, OR WHERE COMPACTION UNDER A WATER LINE CANNOT BE MET, BACKFILL TRENCH WITH CEMENT SLURRY OR FLOWABLE BACKFILL TO THE SPRINGLINE OF THE WATER LINE.
3. BACKFILL DRAIN INLETS WITH CLASS I CLSM WHERE WATER MAIN AND DRAIN INLET SEPARATION IS LESS THAN 6 FT.

**UTILITY NOTES:**

1. EXISTING UTILITIES ARE LOCATED ON THE PLANS FROM A SEARCH OF EXISTING RECORDS AND POTHOLE INFORMATION. THE LOCATIONS AND DEPTHS MUST BE VERIFIED BEFORE CONSTRUCTION.
2. EXISTING UTILITIES ARE LOCATED AND STATIONED ALONG STREET CENTERLINES.



MATCHLINE 'O' STA. 56+00 SEE SHEET SD-03

MATCHLINE 'O' STA. 62+00 SEE SHEET SD-05

C:\pwork\inc\p4\X\drms29415\03e-004.dwg 06/19/08 2:33pm cccancon

REVISIONS

NO.	DATE	DESCRIPTION

DEPARTMENT OF PUBLIC WORKS  
ENGINEERING DESIGN SECTION

CITY ENGINEER: JORGE CERVANTES, P.E., P.T.O.E.  
PROJECT MANAGER: ROSA CORTIZ, P.E.

DRAWN BY: MG  
CHECKED BY: RH

HDR Engineering, Inc.  
DATE: 06/19/2008

HORIZONTAL SCALE: 1"=30'  
VERTICAL SCALE: 1"=3'

*Joseph Morgan* 7/3/08  
LAS VEGAS VALLEY WATER DISTRICT DATE

TITLE: OAKLEY STORM DRAIN  
BIRCH STREET TO CAHLAN DRIVE

SHEET: STORM DRAIN PLAN AND PROFILE  
STA 56+00.00 TO STA 62+00.00

100% FINAL SUBMITTAL  
JUNE 19, 2008

Call before you Dig  
811

Call before you OVERHEAD  
1-702-593-6111

Sheet SD-04  
20 of 56  
DRAWING NO. 327V280