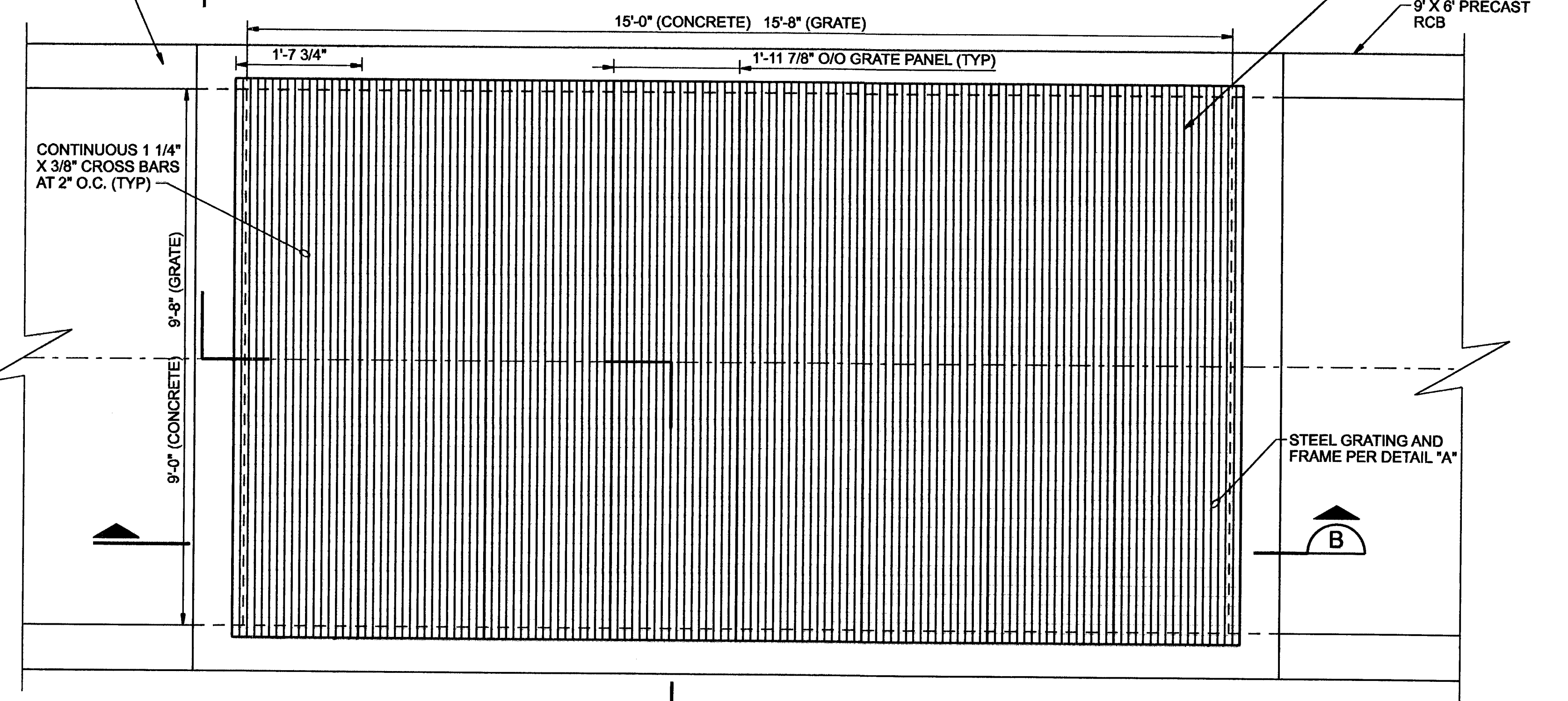
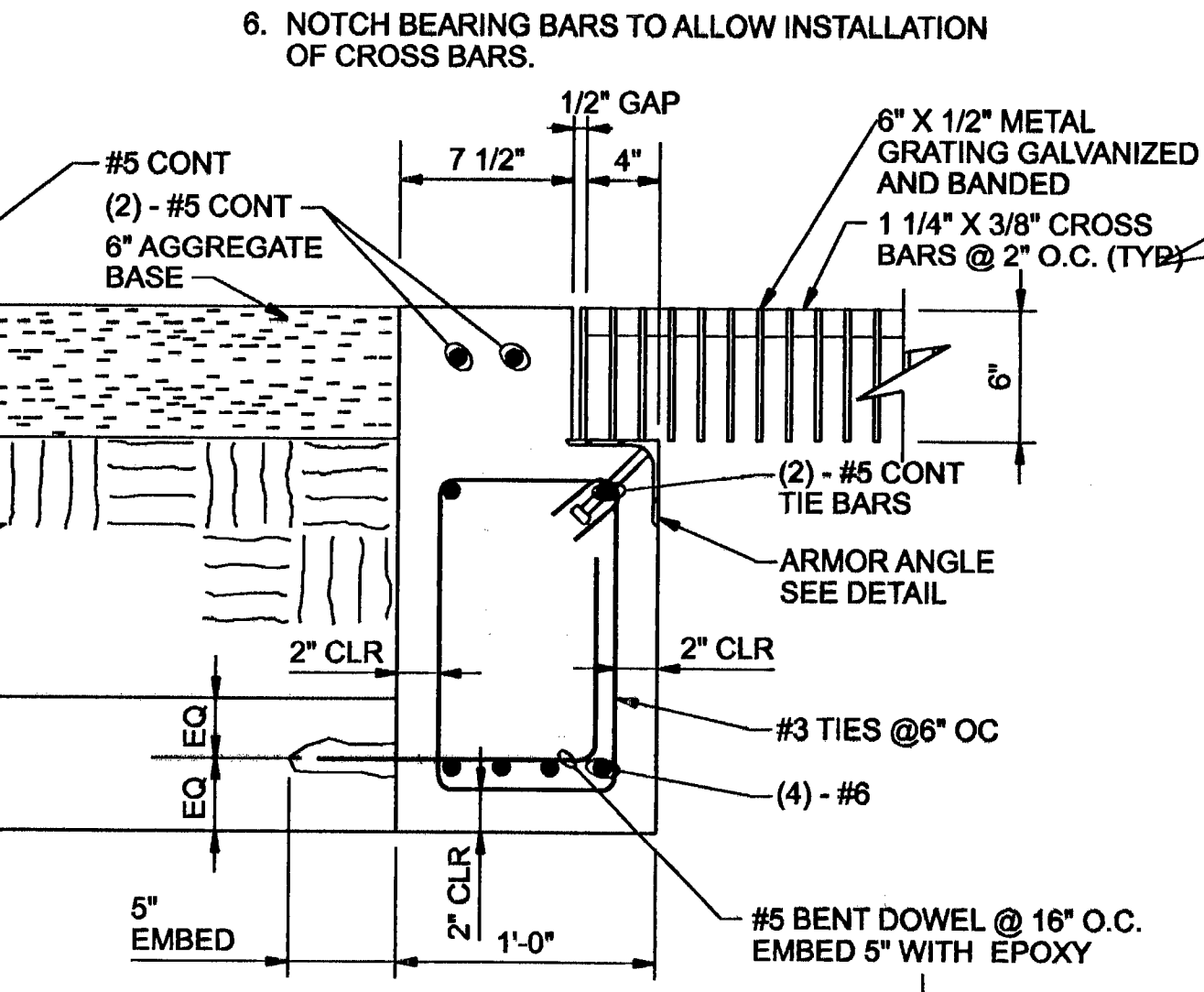
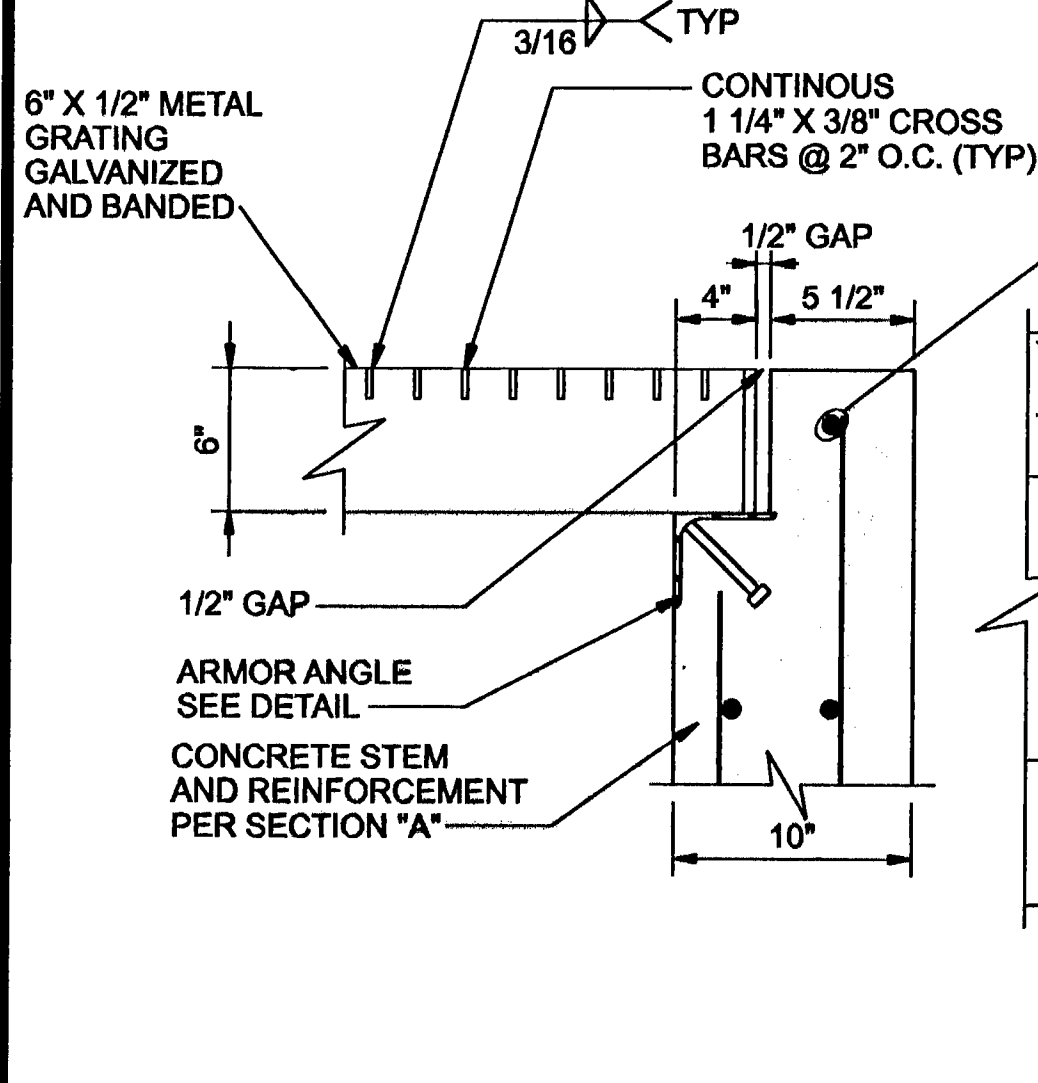


- NOTES:**
1. CONTRACTOR TO VERIFY ALL DIMENSIONS AND NOTIFY ENGINEER OF ANY DISCREPANCIES.
 2. CONTRACTOR TO COORDINATE INSTALLATION OF FRAME AND ALL ASSOCIATED HARDWARE WITH MANUFACTURER.
 3. CONTRACTOR TO COORDINATE ALL GRADING AND BACKFILL REQUIREMENTS WITH GEOTECHNICAL ENGINEER.
 4. REFER TO CIVIL PLANS FOR INFORMATION NOT SHOWN.
 5. FOR GENERAL NOTES, REFER TO SHEET S-1.
 6. NOTCH BEARING BARS TO ALLOW INSTALLATION OF CROSS BARS.

ARMOR ANGLE



DETAIL A
1-1/2"=1'-0"

DETAIL B
1-1/2"=1'-0"

PARTIAL PLAN AT GRATE
3/4"=1'-0" P1,P4

NO.	DATE	DESCRIPTION	APPD

DEPARTMENT OF PUBLIC WORKS
ENGINEERING DESIGN SECTION
 CITY ENGINEER: JORGE A. CERVANTES, P.E., P.T.O.E.
 PROJECT MANAGER: JOEL CHRISTENSEN, P.E.
 DESIGNED BY: J. CHAVEZ
 DRAWN BY: T. UY
 CHECKED BY: C. JOSEPH
 DATE: 17-OCTOBER-2006

PEAK DRIVE STORM DRAIN
 FROM JONES BLVD. TO MICHAEL WAY
ACCESS GRATE STRUCTURE
PLAN AND SECTIONS

Sheet
S-3
 25 of 33
 DRAWING NO.
327-V271