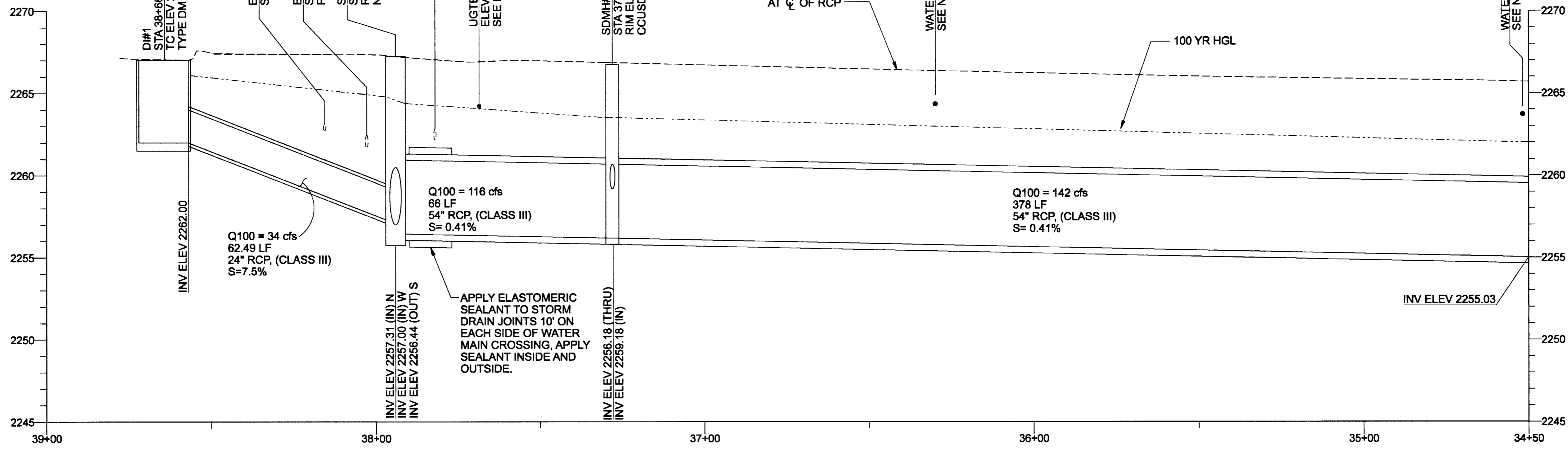
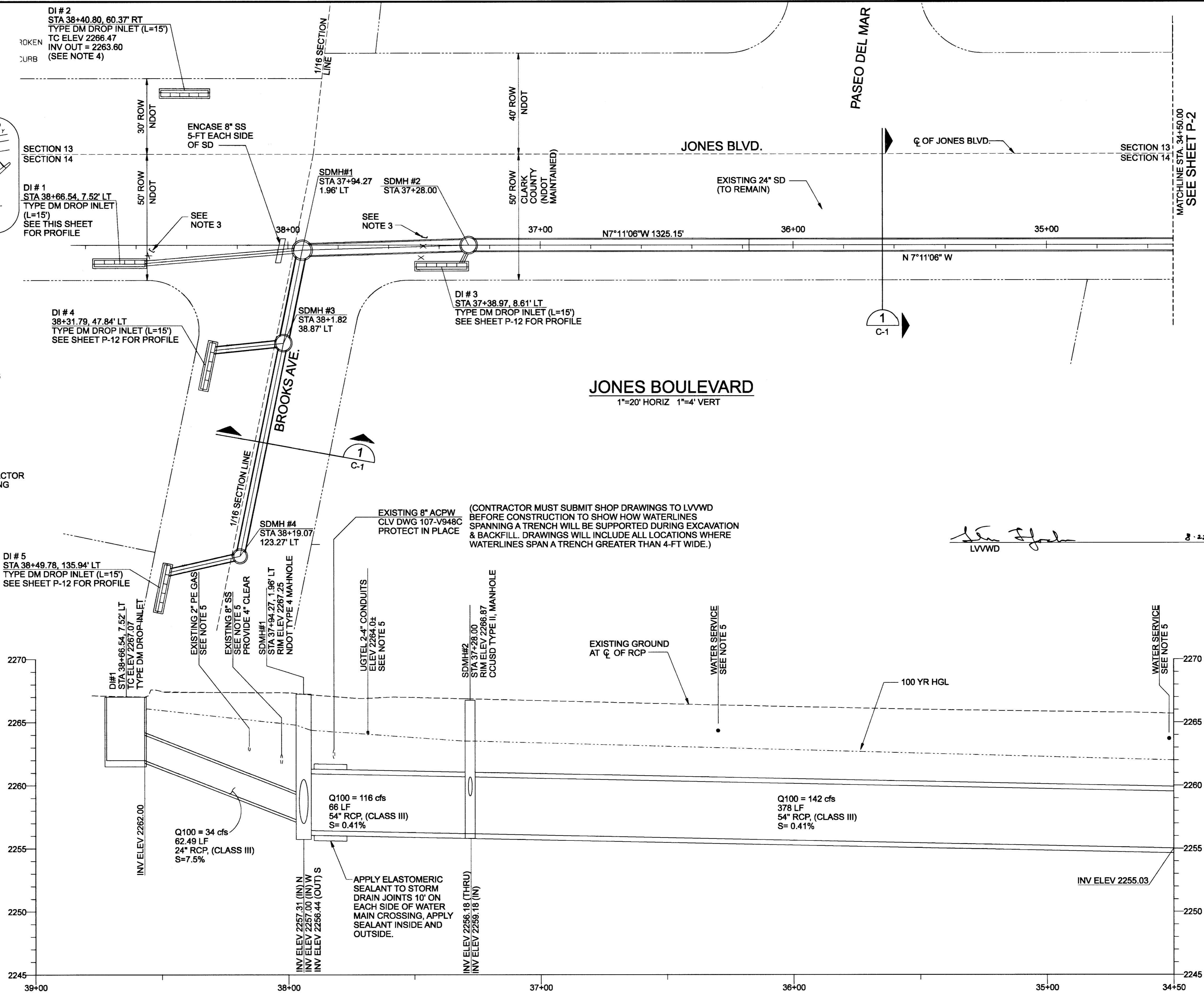


Call before you Dig.
1-800-227-2600
UNDERGROUND SERVICE (USA)

CALL BEFORE YOU DO OVERHEAD
1-702-593-6111

NOTES:

- CONTRACTOR SHALL PROTECT IN PLACE ALL EXISTING FEATURES SUCH AS POWER POLES, ELECTRICAL BOXES, AREA LIGHTS, WALLS, FENCES AND GATES. ANY EXISTING FEATURES DAMAGED SHALL BE REPLACED AT CONTRACTOR'S EXPENSE.
- SEE R-SHEETS FOR STREET IMPROVEMENTS AND REMOVALS
- CAP EXISTING 18" STORM DRAIN, ABANDON IN PLACE. INTALL 2-FT THK. CONCRETE PLUG AT MANHOLE. FILL ABANDONED STORM DRAIN WITH CLSM.
- CONNECT TO EXISTING 18" STORM DRAIN. CONTRACTOR TO CONFIRM LOCATION AND ELEVATION OF EXISTING 18" SD.
- FIELD VERIFY ELEVATION, PROTECT IN PLACE OR RELOCATE AS REQUIRED.



NO.	DATE	DESCRIPTION

DEPARTMENT OF PUBLIC WORKS
ENGINEERING DESIGN SECTION
CITY ENGINEER: JORGE A. CERVANTES, P.E., P.T.O.E.
PROJECT MANAGER: JOEL CHRISTENSEN, P.E.
DESIGNED BY: B. SANCHEZ
DRAWN BY: T. UY
CHECKED BY: G. THOMPSON
DATE: 17-OCTOBER-2006

TITLE: PEAK DRIVE STORM DRAIN
FROM JONES BLVD. TO MICHAEL WAY
SHEET: JONES BLVD. STORM DRAIN - PLAN
AND PROFILE STA 34+50.00 - STA 38+50.00

8/21/07 EXP 6/30/08
Sheet **P-1**
07 of 33
DRAWING NO. 327-V271